



**Congratulations on your purchase!**  
**We thank you for choosing Rayne Mirrors!**

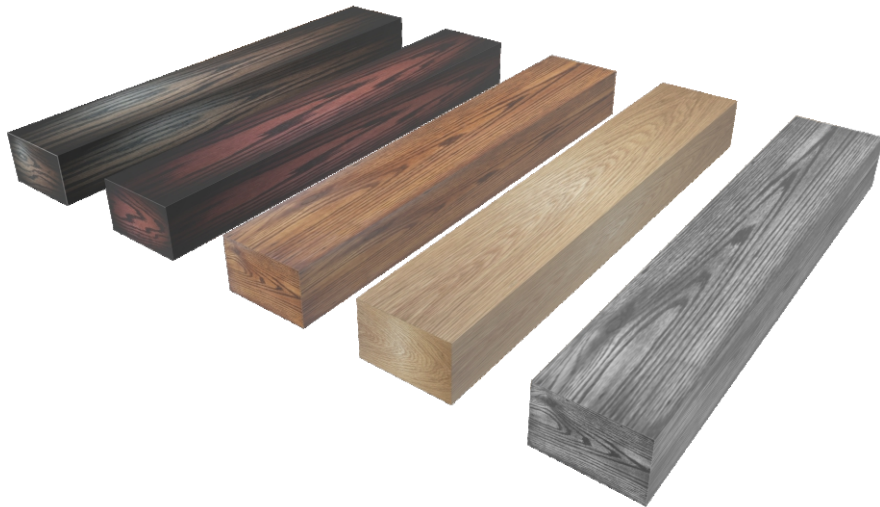
**You may contact us with any questions by e-mail at:**

**[ORDERS@RAYNEMIRRORS.COM](mailto:ORDERS@RAYNEMIRRORS.COM)**

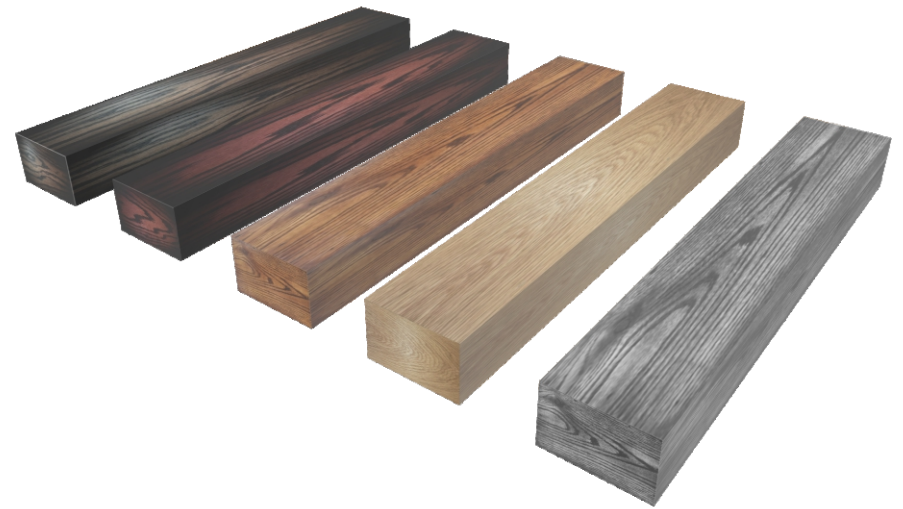
**OR**

**by telephone at:**

**(573) 325-1344**



## Hardwood Floating Shelf



A hardwood collection from  
The Ozark Mountains in  
Southern Missouri



**Congratulations on your purchase!**  
**We thank you for choosing Rayne Mirrors!**

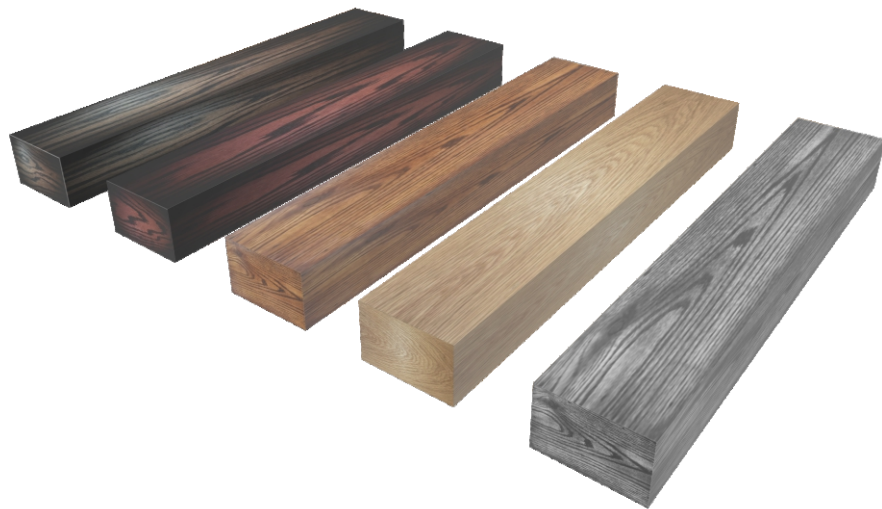
**You may contact us with any questions by e-mail at:**

**ORDERS@RAYNEMIRRORS.COM**

**OR**


**by telephone at:**

**(573) 325-1344**

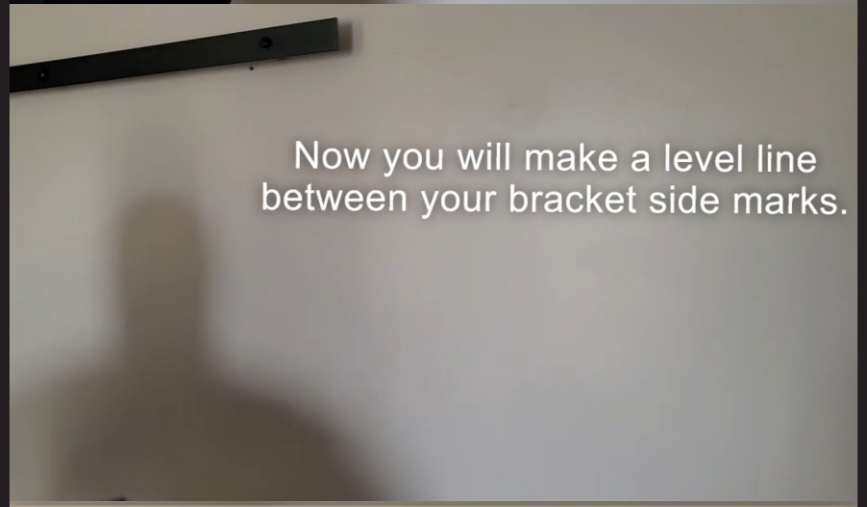


Kit contains  
1 x Floating Shelf  
1 x Mounting Bracket  
1 x Hardware Pack

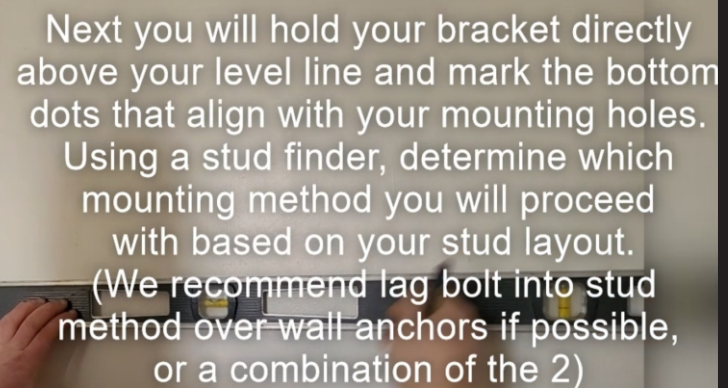




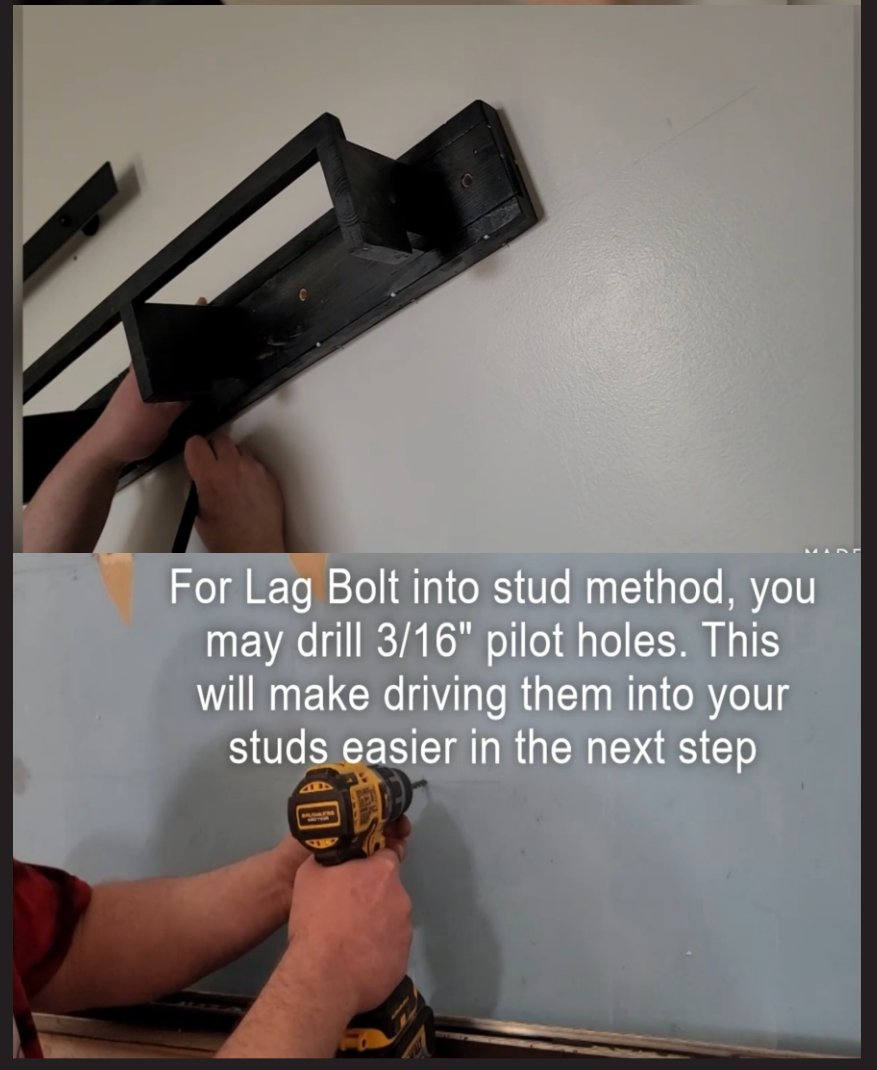
Start by placing your bracket at your desired location. There are dots on your bracket marked for aligning your mounting holes. You will first need to mark the center line dots on the sides as shown



Now you will make a level line between your bracket side marks.



Next you will hold your bracket directly above your level line and mark the bottom dots that align with your mounting holes. Using a stud finder, determine which mounting method you will proceed with based on your stud layout. (We recommend lag bolt into stud method over wall anchors if possible, or a combination of the 2)



For Lag Bolt into stud method, you may drill 3/16" pilot holes. This will make driving them into your studs easier in the next step

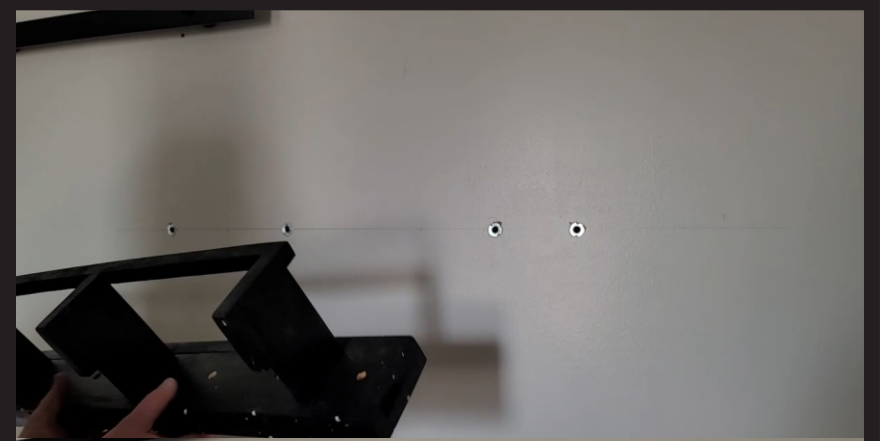
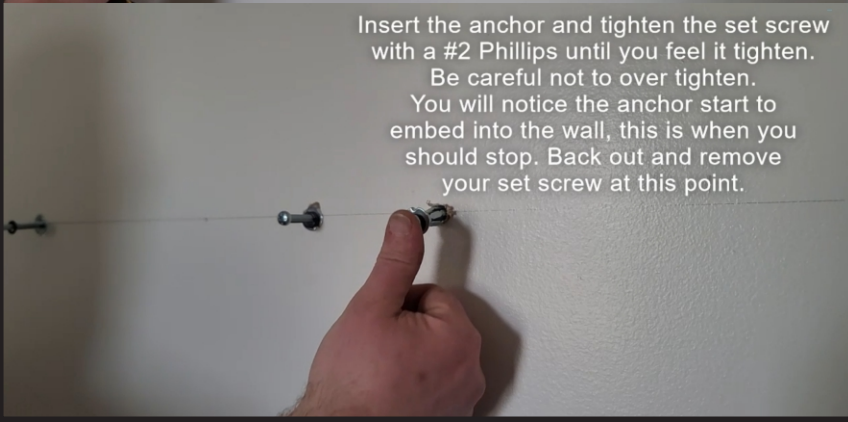
Now with your lag bolts just penetrating the back, line them up with your pilot holes and begin to tighten



For hollow wall anchor method you will need to drill 7/16" holes on your marks to insert your anchors into.



Insert the anchor and tighten the set screw with a #2 Phillips until you feel it tighten. Be careful not to over tighten. You will notice the anchor start to embed into the wall, this is when you should stop. Back out and remove your set screw at this point.



Insert the 4" machine screws and begin to attach the bracket to the wall.



Mount your shelf, you will have an allowance you can slide the shelf to fine tune your final placement.



Holding pressure towards the wall, tighten the set screw on top to lock into place. Insert hole plug and now you are finished!

