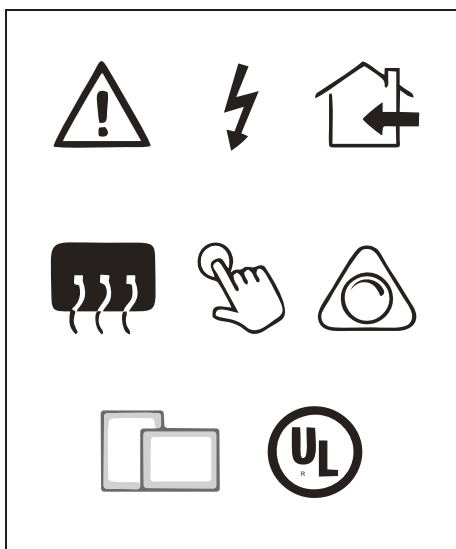
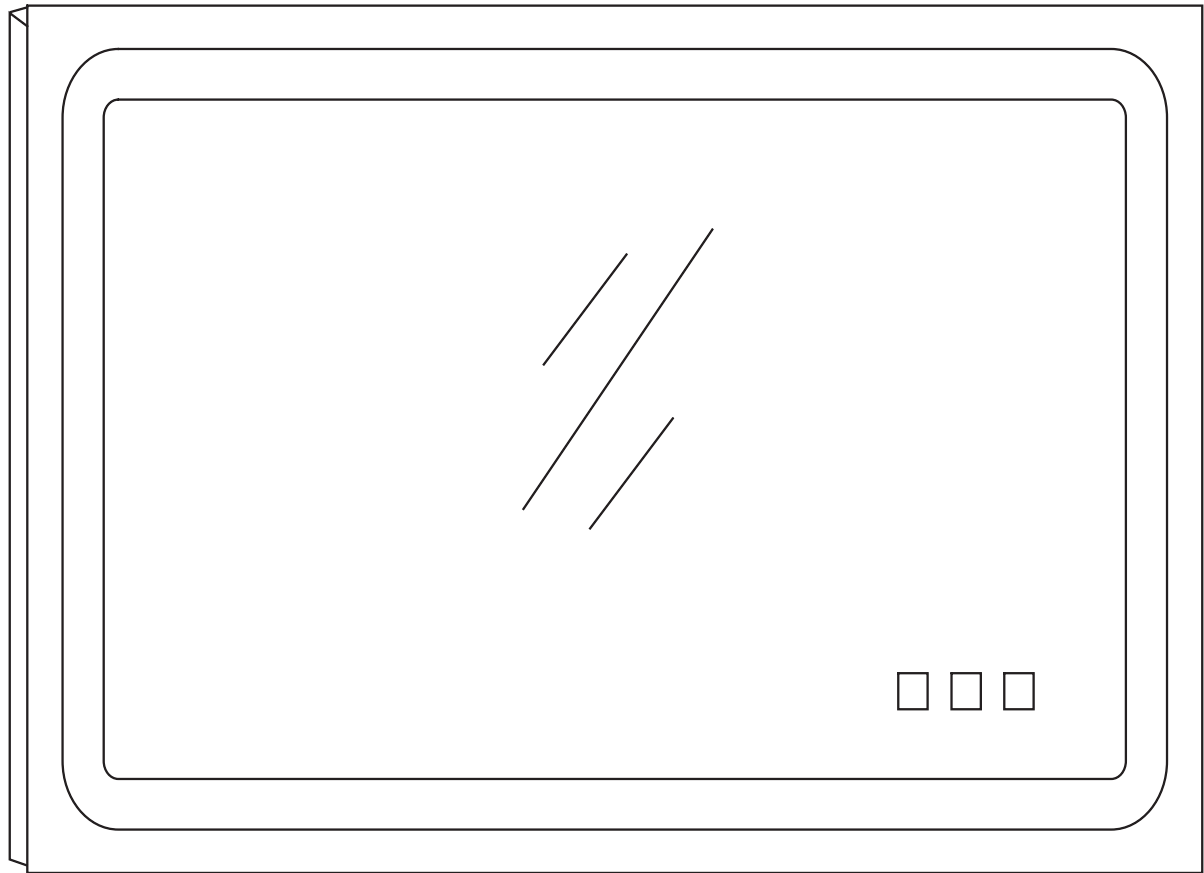


# LED BATHROOM MIRROR







## INSTALLATION MANUAL

We highly value customer's user experience. Please contact us freely if there's any parts missing or damaged. We will provide professional advice or efficient customer support in 24 hours.

# LED BATHROOM MIRROR

## Instructions For Three Buttons

	<p><b>ON&amp;OFF</b></p> <p>Press the button ☼, both the front light and the rear light turn ON. Press the button ☼ a second time, the front light of the mirror turns OFF, and only the rear light is ON. Pressing the button ☼ a third time, the rear light of the mirror turns OFF, and only the front light is ON. Remain inactive for 15 seconds ☼, then press the button a fourth time, and all the light is OFF.</p> <p><b>Dimmer Switch</b></p> <p>Press the button for 3 seconds until the button begins to flash and the light brightness will be adjusted from 100% to 10%. Press the button for another 3 seconds until the button begins to flash and the light brightness will be adjusted from 10% to 100%.</p>
	<p><b>Adjustable Color Temperature</b></p> <p>Adjustable color temperature could be switched among cold white light (6500K), natural light (4500K) and warm white light(3500K).</p>
	<p><b>Defogger Function Swich</b></p> <p>Press the button ☼, the button's light turn on, and the anti-fog is ON. Press the button ☼ again, the button's light turn off, and the anti-fog is OFF. Please note that the defogging area only works in the middle of the mirror, not the whole mirror. It is recommended to turn on the defogging function before taking a shower, because the fog will not dissipate immediately after turning on and it will take a few minutes to defog.</p> <p> <b>ONE TOUCH TO DEFOG</b> Indepentdent Control</p>
<p>Our mirror controller has the memory function which can memoriz</p> <ol style="list-style-type: none"><li>1. The light brightness.</li><li>2. The light temperature.</li><li>3. The anti-fog ON or OFF.</li></ol>	

### Different sizes of mirrors have different anti-fog sizes

Mirror size	28*20in	40*24in	40*32in	48*32in	48*36in	55*36in	60*36in	60*40in	36*28in
Defogging Size	8*4in	20*8in	24*12in	32*14in	32*18in	40*18in	43*18in	43*22in	20*10in

# LED BATHROOM MIRROR

## Electrical Safety Instructions

**INSTALLATION has to be made by a qualfed/registered electrician.**

- 1) Read this instruction carefully and refer back to them during installaton to ensure that your product is fitted safely and correctly.
- 2) Always switch off the electrical supply at the mains during installation and maintenance.It is recom-mended that the fuse is withdrawn or the circuit breaker is switched off for the necessary circuit before installation.
- 3) This product is only suitable for permanent instalation. DO NOT connect to a trailing plug and socket outlet Although this product has an Ingress Protection rating of IP44 it is only suitable fir indoor use. DO NOT attach the product to surfaces that are damp or otherwise electrically conductive.



## Installation Care & Safety



- 1) Wear suitable eye protection when drilling.
- 2) Take care when using power tools near water the use of a residual current device (RCD) is advised.
- 3) Beware of hidden cables or pipes.Take care if drilling on tiled surfaces in case the drill slips. A piece of masking tape applied to the wall before marking out the fixing holes will stop the drill from wandering.
- 4) This product should be positioned well away from curtains and other fabrics.Never cover the mirror This product is heated.  
We recommend that it is turned off after use and should never be left on for prolonged periods of time.

WHEN THE MIRROR MUST BE CLEANED, IT IS  
NECESSARY TO SWITCH IT OFF FIRSTLY!



- DO NOT strike glass components with hard or pointed items.
- DO NOT place very hot or very cold items against or in clase proximity to glass surfaces unless an adequately thick insulation material isused to prevent such items coming in contact with the glass.

## COMPLIANCE

All electronic components used in this products are UL listed.  
Please read follow installation proce-dure Before install

# LED BATHROOM MIRROR

## Installation Procedure

Before starting your installation

- 1) The wall surface must be of suitable strength and construction
- 2) The main electricity supply has been power-off

### STEP 1:

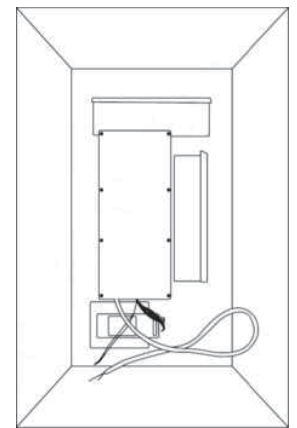
Measure the distance(X) between the key-hole centers on the back of the mirror (can be hung vertically or horizontally).

Draw a horizontal line on the wall according to the height you want to hang the mirror.

Mark the drill positions on the horizontal line using dimension(X) taken from step 1.

Ensure the hole positions are horizontal by using a spirit level.

Accurately mark the 2 hole positions with a pencil, drill, and fit the wall plugs.



### NOTE:

The wall plugs supplied are only suitable for solid stone / brick walls.

For any other wall types, please go to stores to buy the correct plugs & screws after checking.

### STEP 2:

- 1) Make the electrical connection from the mirror to the mains supply. Use the connection wire found at the rear of the mirror to make the necessary connections.
- 2) Insert the wall screws supplied into the wall plugs. Leave approximately 5-10mm of the screw standing proud of the wall. Mount the mirror onto the screws fitted to the wall. Ensure mirror is securely mounted.
- 3) To remove the mirror, the mirror should first be lifted and then pulled away from the wall.

## Wiring

This product is designed and manufactured in class II category. No need earth connection.

The product needs to be hardwired with the supply cable lead from the wall.

## Light & Control

The integrated LED light source and system are not supported to be replaced by consumers.

Please DO NOT change by yourself.

The lights (and defogger) are controlled by a touch sensor on the mirror surface to turn on/off and adjust brightness and color temperatures.

Keeping the mirror lights on, then you also could control it on&off by a wall switch, if connected with it.

The last working condition before switching off would be kept while turned on again, either brightness level or color temperature.

# LED BATHROOM MIRROR

## TOOLS

Please prepare below tools before assembly .



Electric drill



Pencil



Hammer



Measuring tape



Screwdriver

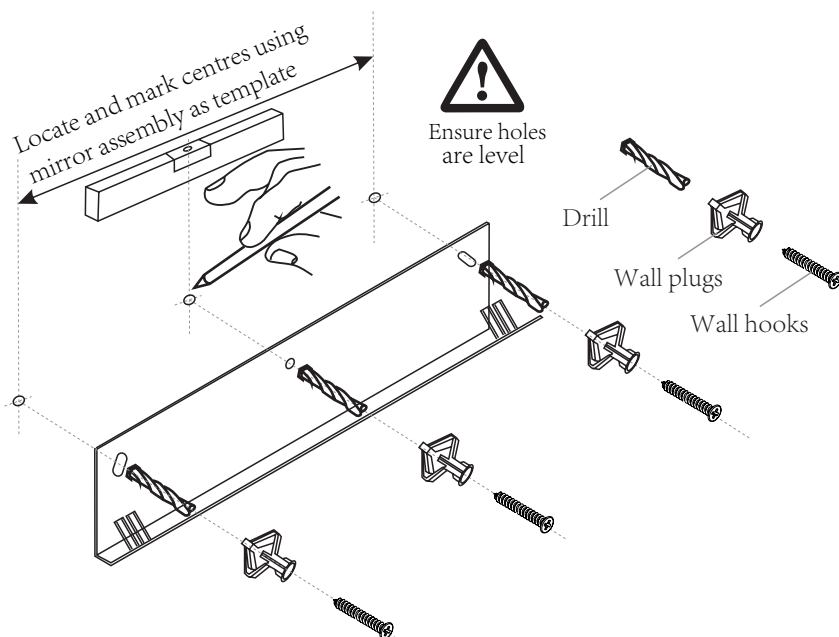


Level

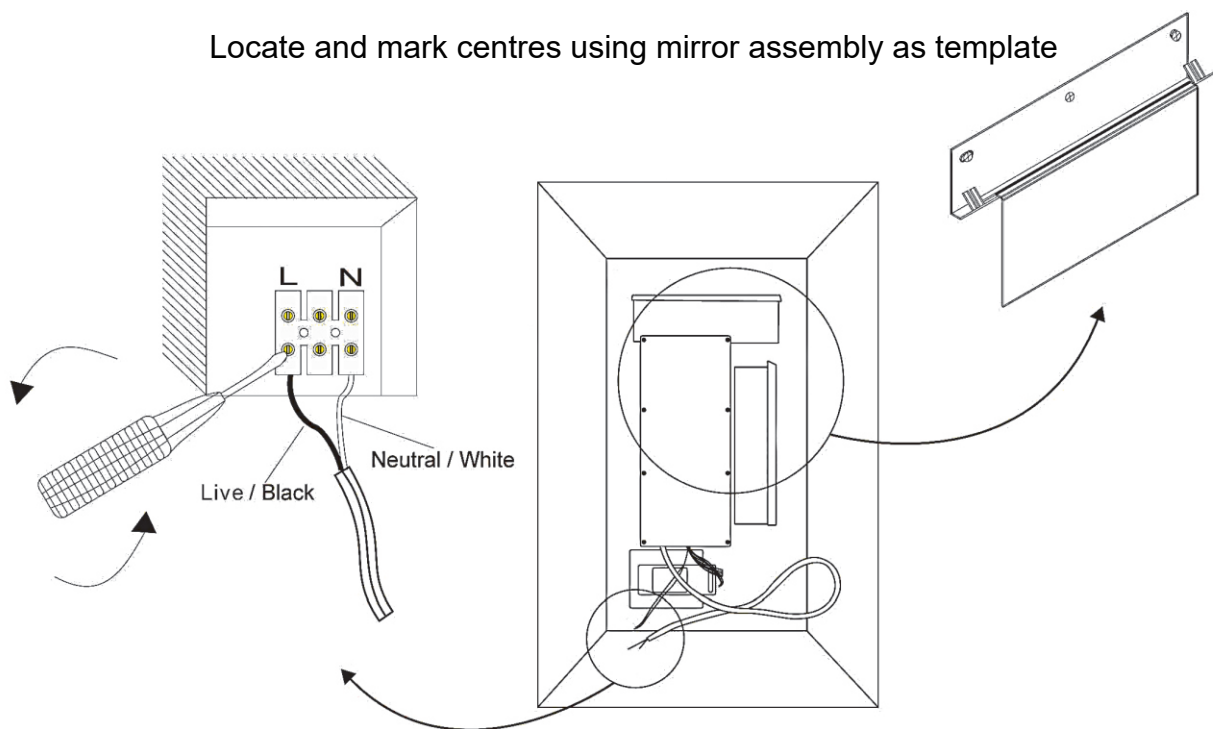
Locate and mark centres using mirror assembly as template



Ensure holes are level



Locate and mark centres using mirror assembly as template



## INSTALLATION SPECIFICATIONS

1. 120V hardwire electrical connection; junction box required. This mirror was designed and produced according to CLASS II level (Double Insulation), no need ground wire connection. Ensure all connection are tight in place.
2. Mirror should be mounted to wall studs; wall bracket provided.
3. Controlled by capacitive touch button on fixture or non-dimming on/off wall switch.
4. If you are missing a mirror bracket, you can contact our after-sales customer service team and we will get back to you within 24 hours and send you a new replacement bracket.