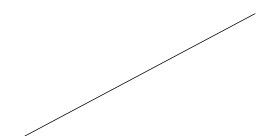
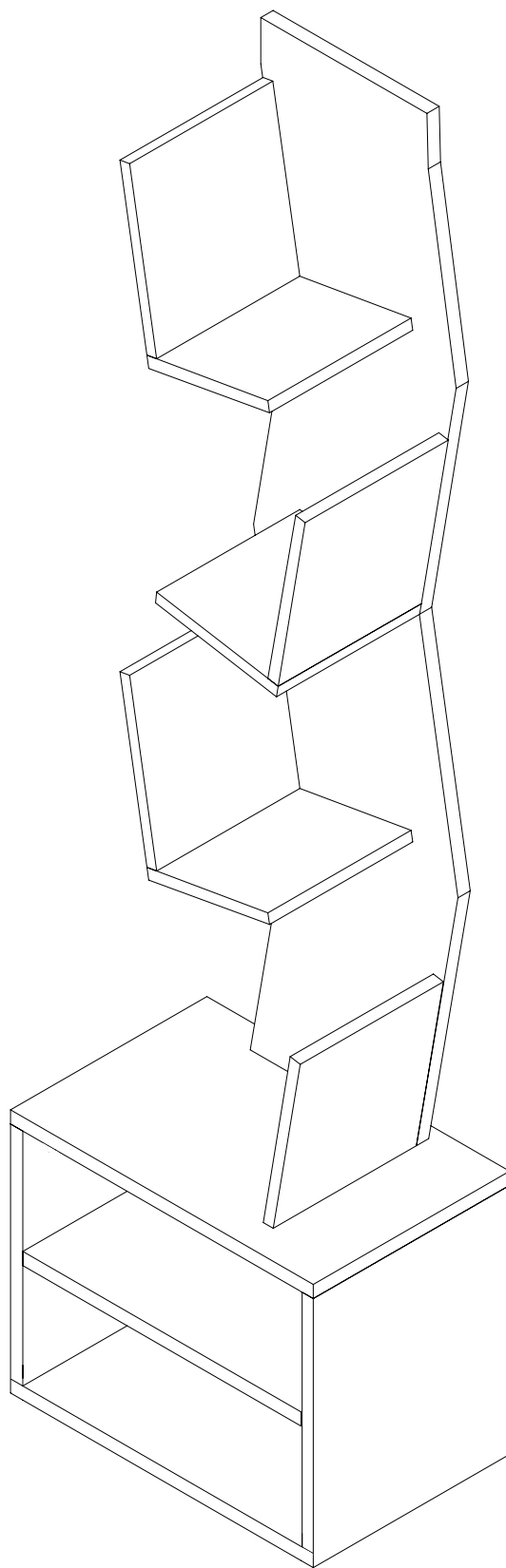
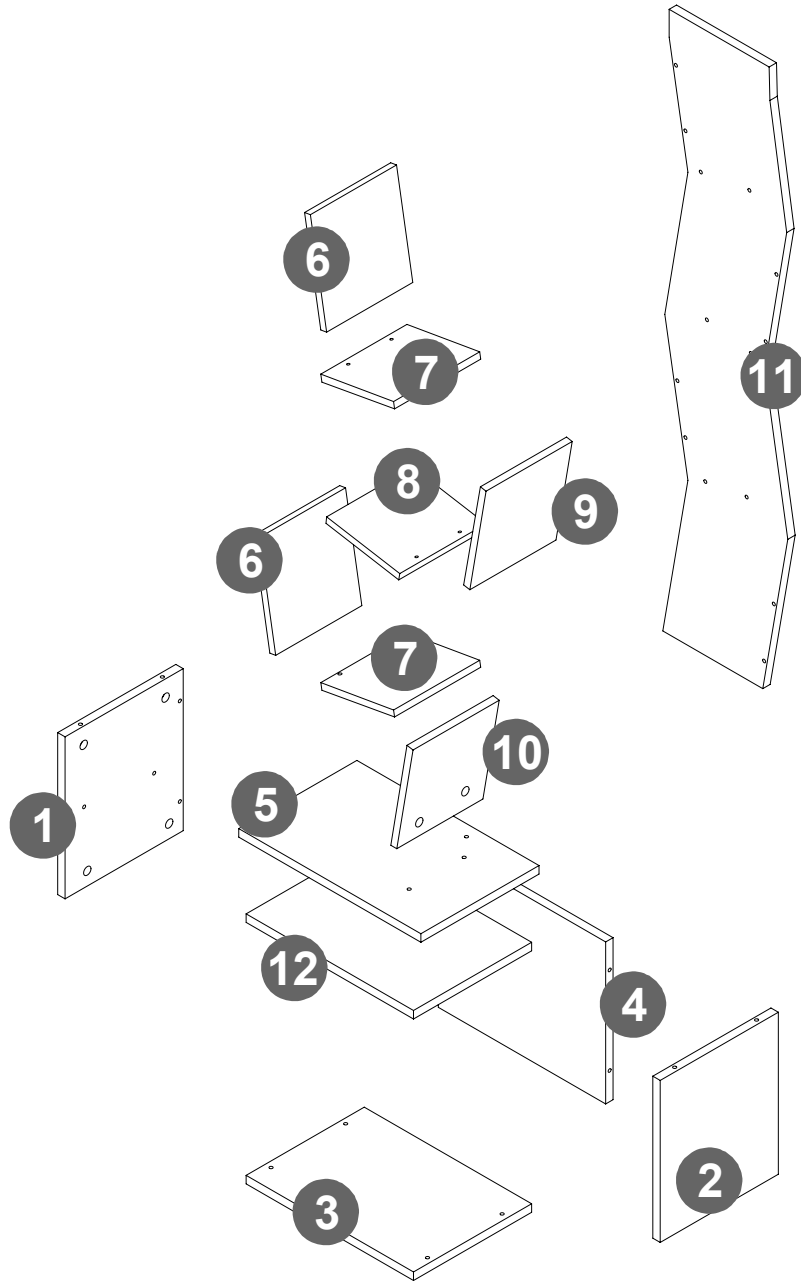

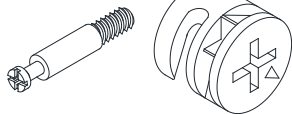
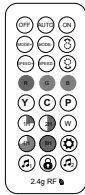
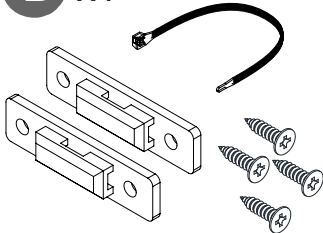
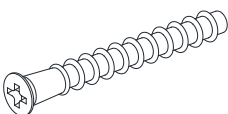
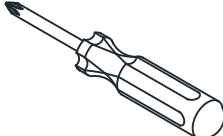
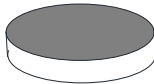



# ASSEMBLE INSTRUCTION






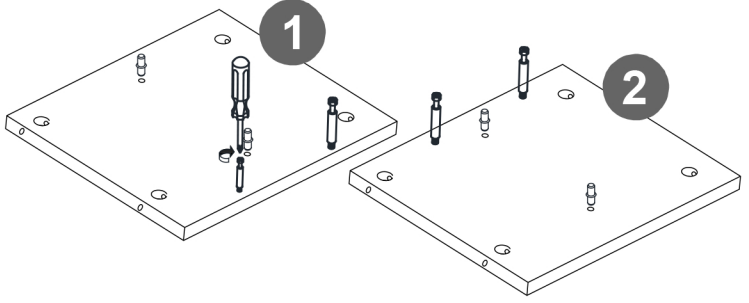
# Parts List



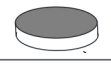


<p><b>A</b> x4</p> 	<p><b>B</b> x16</p> 	<p><b>C</b> x1</p> 	<p><b>D</b> x1</p> 
<p><b>E</b> x20</p> 	<p><b>F</b> x1</p> 	<p><b>G</b> x4</p> 	<p><b>H</b> x36</p> 

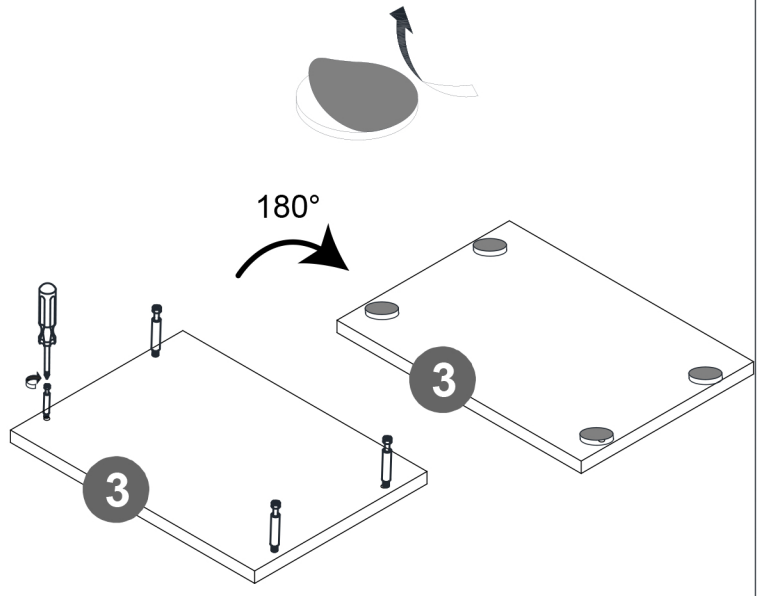
### Step1

<b>A</b> x4 	<b>F</b> x1 	<b>B</b> x4 
---	---	---



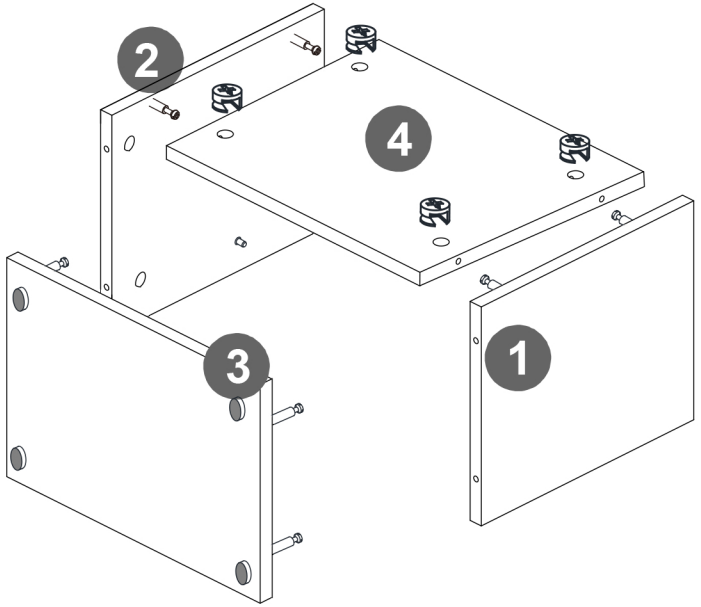
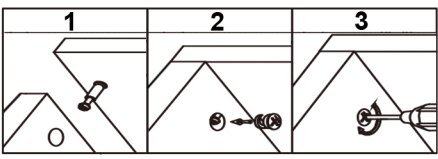
### Step2

<b>G</b> x4 	<b>F</b> x1 	<b>B</b> x4 
--	--	--





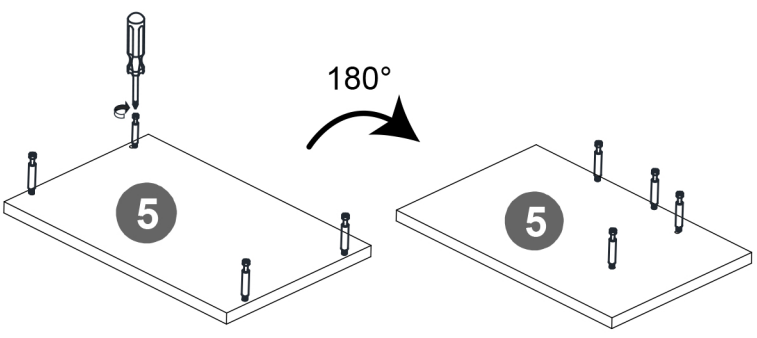
### Step3

<b>F</b> x1 	<b>B</b> x4 
--	--

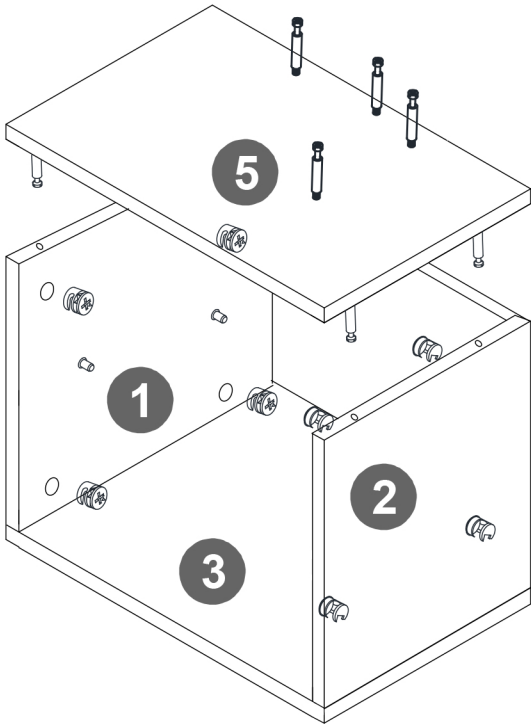
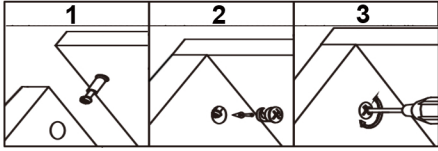
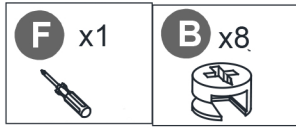


### Step4

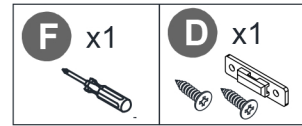
<b>F</b> x1 	<b>B</b> x8 
--	--



### Step5



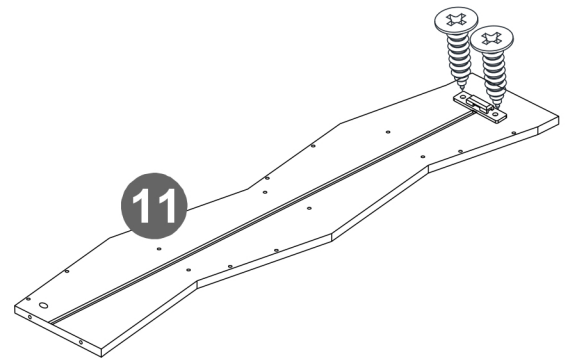
### Step6



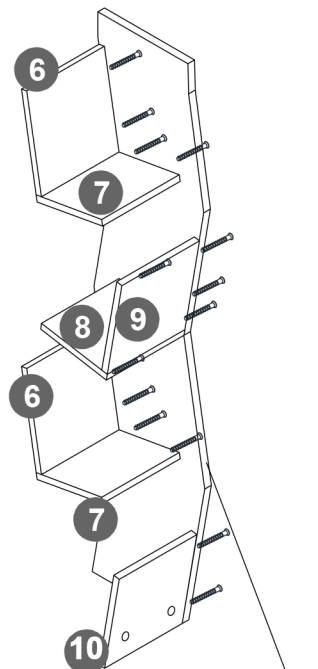
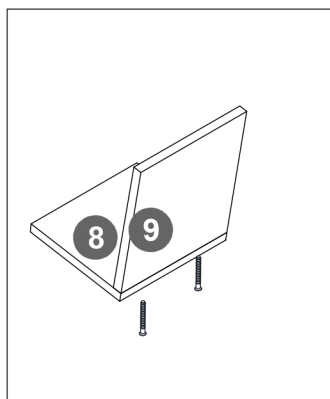
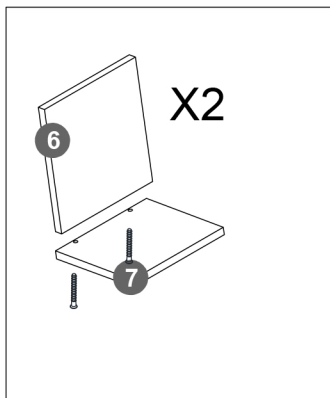
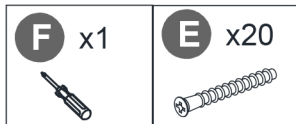
#### Bookshelf Safety Reminder

Households with children: Anti-tip device installation is mandatory to prevent tipping risks (wall drilling required).

Households without children: Anti Bookshelf Safety Reminder tip device installation is optional.

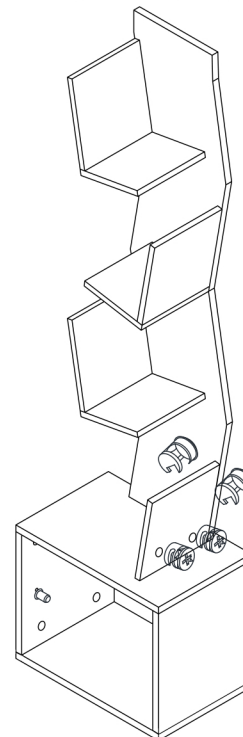
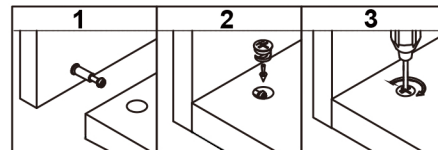


### Step7

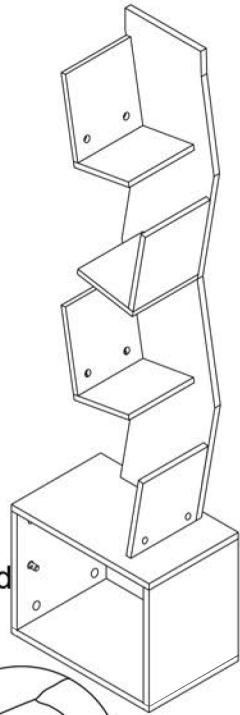
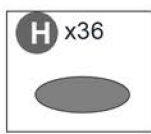


Back of the slot

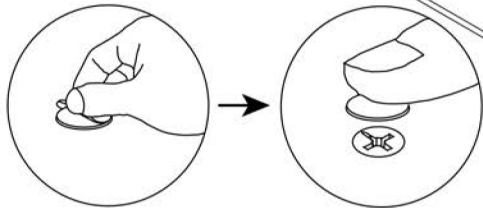
### Step8



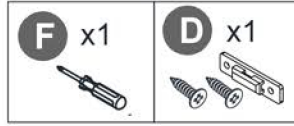
## Step9



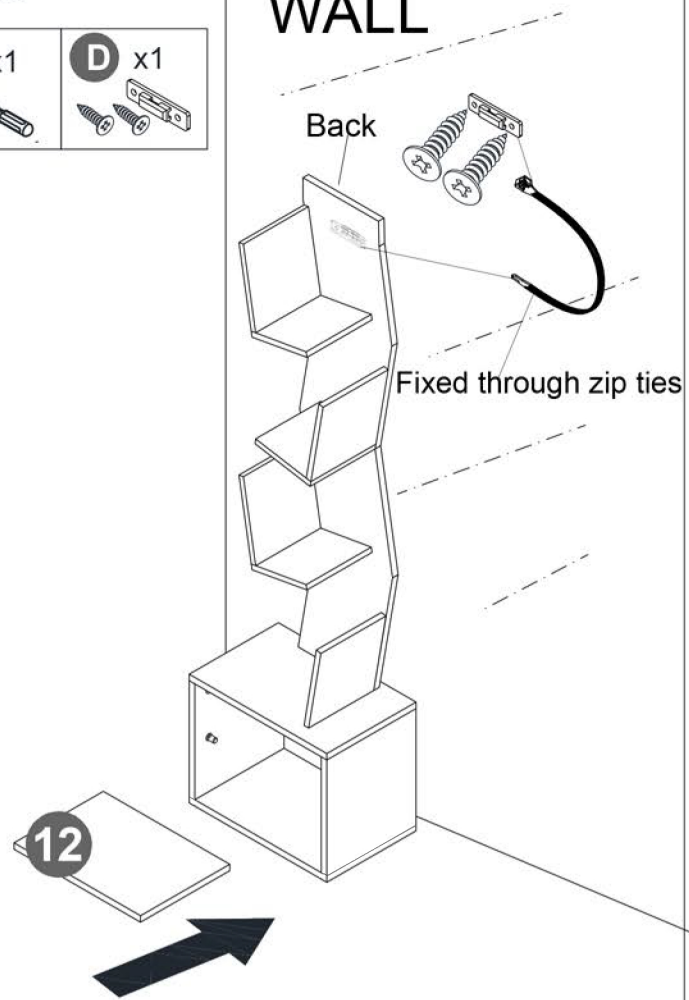
Note: Cover visible exposed accessory B with N sticker



## Step10

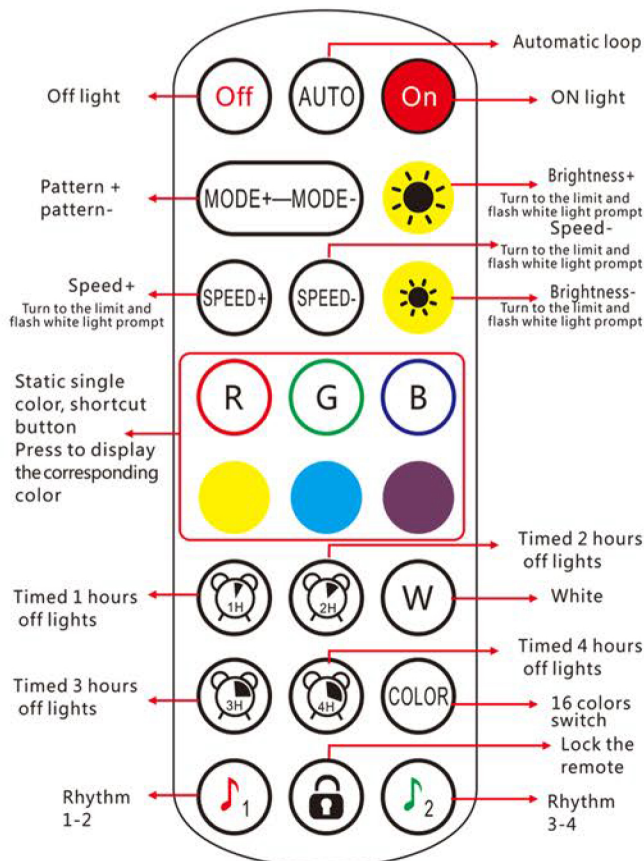


WALL



## Step11

### LED2023-24KEY



Rhythm 1-2: Single click to switch to 1-2 rhythm mode  
 Rhythm 3-4: Click to cycle through the 3-4 rhythm mode  
 Remote control lock: After pressing, the remote control is locked, pressing the switch is available, other keys are invalid. After pressing once, the unlock button can be used. After the remote control is locked, press the switch to unlock the remote control.

## Step12

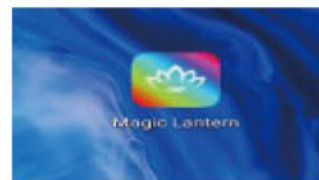
### Operation manual of Magic Lantern APP

#### 3.1 APP Download

• Scan the QR code  
 iOS and Android systems can download the " Magic Lantern " APP by scanning the QR code. Open the browser or other tools with "Scan QR code" function, scan the " Magic Lantern " QR code as below:

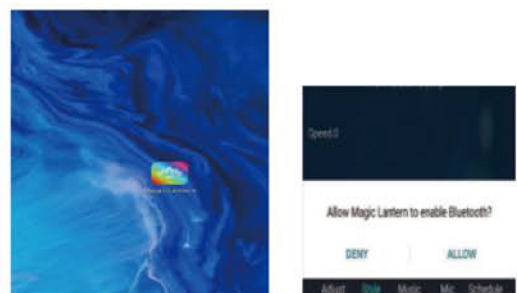


After the software is installed and downloaded successfully,click apk to install.After the installation is complete,the following style of program icon will appear on the desktop.



#### 3.2 App Operation

(1) Click on the Magic Lantern APP icon, enter the APP page:



### Step13

(2) After entering the APP interface, if Bluetooth is not enabled, "Allow MagicLantern to Bluetooth ?" Click [Allow]

(3) switch to color and brightness interface:



### Step14

(4) click to show the lamp list, view lamp list:

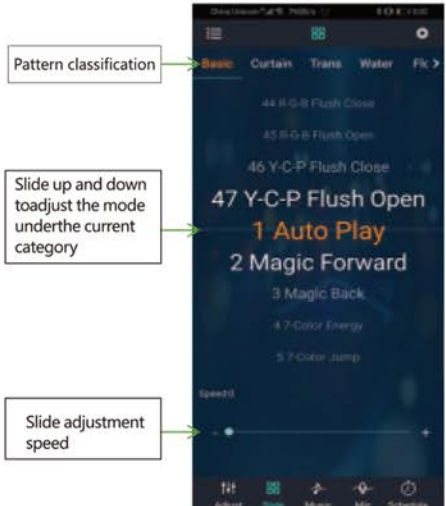


### Step15

(5) Click to RGB manual adjustment view:



(6) switch to the mode interface:



### Step16

(7) switch to the music rhythm interface:



(8) Switch to the microphone rhythm interface:

