

Power input: 125V/60Hz

Power output: 1875W/15A (Max.)

Transmitter frequency: 433.92MHz

Remote transmitter battery: DC CR2032, 3V battery 1pc

Transmission range: up to 100ft

Caution

1. Appliances to be connected to the remote control socket MUST NOT exceed the voltage and frequency ratings as in "Specifications".
2. Operation is subject to the following two conditions:
(1) this appliance may not cause harmful interference,
(2) this appliance must accept any interference received, including interference that may cause undesired operation.
3. Only for indoor use and storage.
4. Low transmitter battery may lower the distance between the transmitter and the receiver.

LINK2HOME

1 YEAR LIMITED WARRANTY

IMPORTANT: Proof of Purchase is required to obtain warranty service
Paragon Group USA Inc. warrants to the original owner that our products will be free from defect in workmanship and material for a period of ONE YEAR from the date of purchase. Should any unit(s) prove to be defective during this period, Paragon Group USA Inc. will be responsible for replacement of the defective unit(s) only. Paragon Group USA Inc. is not responsible for labor charges or any incidental or consequential expenses.
Not Covered – Batteries are not covered by this warranty. Repair service, adjustment and calibration due to misuse, abuse or negligence are not covered by this warranty. Unauthorized service or modification to this product or of any furnished components will void this warranty in its entirety.

This warranty does not include reimbursement for inconvenience, installation, set-up time, loss of use, postage, unauthorized service, or other products used in conjunction with Link2Home products.

For warranty service, please contact Paragon Group USA Inc. Customer Service by Phone: 1-888-783-6082 or e-mail: info@paragongroupusa.com.

This warranty gives you specific legal rights, and you may also have other rights which vary from state to state.

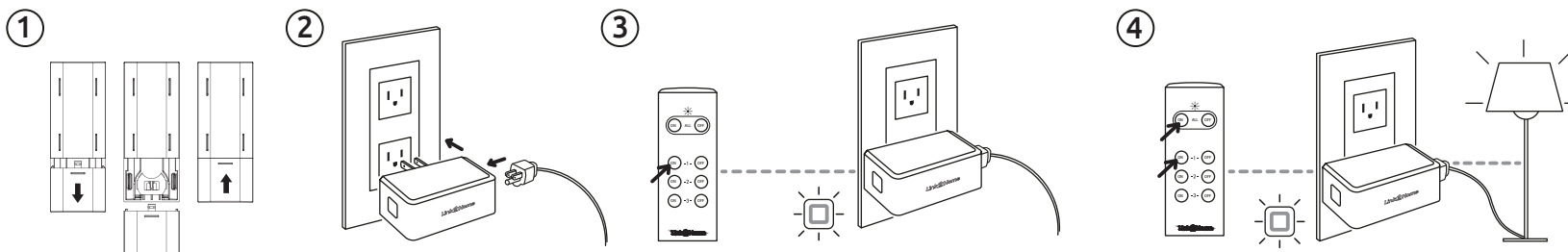
Paragon Group USA Inc.
Link2Home Product Division
Englewood, NJ 07631
USA

link2home.com

Link2Home

Instruction manual Wireless Remote Control Outlet Indoor 1+3

EM-RF300W
RF102T+RF102R-ULX3



1. Step A: Locate the battery compartment on the back of the remote. Push down and away to slide the compartment cover off.
Step B: Remove the plastic battery tab from the battery compartment in the back of the remote control to activate the pre-installed battery.
Step C: Slide the compartment cover on the remote and click securely into place. Your remote is now ready to use.

2. Plug the receiver into a standard AC electrical wall socket. Plug the appliance into the receiver outlet.

3. Before using the outlet with remote control, please pair as follows:
A. Plug the outlet into the wall socket. When the receiver indicator light begins flashing, press any ON or OFF button to pair the outlet to a corresponding number on the remote control. If successfully paired, but you wish to unpair and tie to another corresponding button, long-press the receiver button on the left side of the outlet until the light indicator starts flashing. You may then press any new ON or OFF button on the remote control. When the new pairing is successful, the light indicator on the outlet will stop flashing.
B. When first using and pairing outlets to the remote control, please plug-in and pair one outlet at a time.
C. Unpairing: When the outlet and remote control are successfully connected, long-press the receiver on the left side of the outlet for 3+ seconds and refer to step A.

4. All ON will turn all outlets ON. All OFF will turn all outlets OFF.
To manually turn ON or OFF one outlet, press ON or OFF button on the remote control for number 1, 2 or 3.

Remote Battery Replacement:

If operation of the receiver units becomes erratic, it may be necessary to replace the battery in the hand-held remote unit. To do this, first remove the battery compartment cover. Press the tray release button on the back of the remote. Next, remove the depleted battery and discard according to local ordinances. Be sure the correctly install the new battery. Replace battery compartment cover and test by using it to control the Indoor Remote Outlets.

Important: Install only new batteries of the same type in your product. Failure to insert batteries in the correct polarity, as indicated in the battery compartment, may shorten the life of the batteries or cause batteries to leak. Do not mix old and new batteries. Do not mix Alkaline, Standard (Carbon-Zinc) or Rechargeable (Nickel Cadmium) or (Nickel Metal Hydride) batteries. Danger of explosion if battery is incorrectly replaced.

Batteries should be recycled or disposed of as per state and local guidelines.

WARNING: This product contains a button battery. If swallowed, it could cause severe injury or death in just two hours. Seek medical attention immediately.