

# Simplified®

Simplified, for peace of mind!

## User Manual : EF-SP



Scan for more help!

Security is just a touch away

# Simpled®

Simplified, for peace of mind!

## User Manual : EF-SP



Good day! Fancy a gander at our splendid array of products?  
Simpled, a technological marvel hailing from the heart of London, is on a mission to jazz up your smart home scene with some nifty IoT gadgets.

Picture this: you, the master of your domain, wielding our Smart Door Locks and Camera Doorbell like a true tech-savvy maestro. Simpled, where British innovation meets home security. It's not just smart, it's simply brilliant!

Cheers for opting for the Simplified Slim Door Lock! Before you dive into the world of keyless wonders, do yourself a solid and give this manual a good read. We promise, it's more thrilling than a Sherlock Holmes mystery – and way less confusing than trying to decipher a treasure map. Happy reading, and may your doors swing open effortlessly!

## Table of Contents:

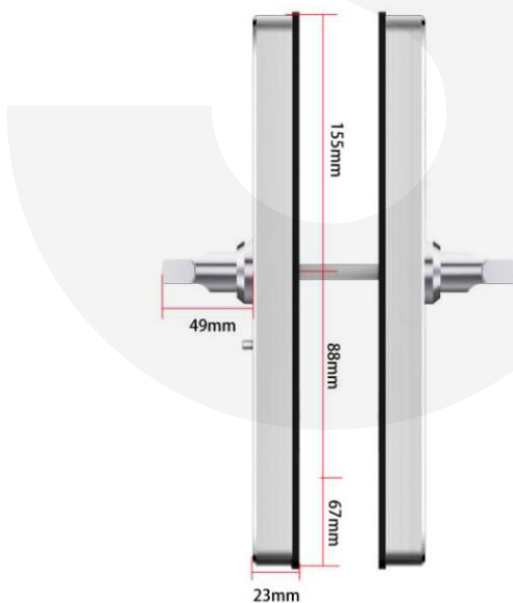
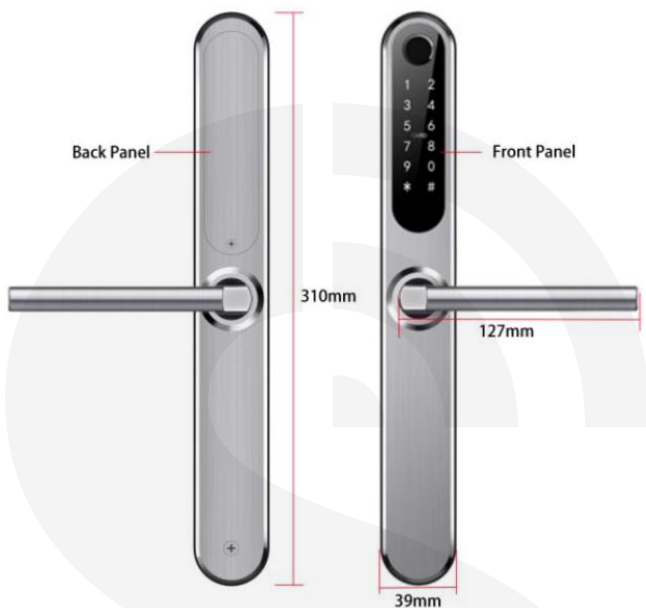
<b>Product Overview</b>	<b>1</b>
What's Included	2-3
Specification	4
Factory reset	4
<b>Installation</b>	
Turn the Handle for Front Panel	6
Turn the Handle for Back Panel	7
Step 1: Install Mortice	8
Step 2: Install Square Shaft	8
Step 3: Install Sliding Screw Casing	8
Step 4: Connect Front and Back Panels Wire	9
Step 5: Install Back Panel	9
Step 6: Install the Battery	10
<b>Operation</b>	
Setting up the Smart App	10-11
Bluetooth Unlock	11
Add fingerprints	12
Add passcodes	13
Passcode Management	13
Create and Send e-Keys	14
e-Key Management	14
Create Admin	14
Programme Card, Proximity Fobs, Phone Tag Stickers	15
Unlocking Records	15
Pair Wireless Key Fob	16
Activate Passage Mode	17
Import data from an old Simplified lock	17
How to turn off/on the lock sound?	17
Transfer lock to a new owner	17
Pairing WiFi Bridge	17-18
Light Status	18
Pair the Gateway with APP	19
<b>FAQ</b>	<b>20</b>
Want more Accessories? Here is all you want	21
Note	22
<b>Contact Us</b>	<b>23</b>

Before you embark on the epic journey of fitting and using your Simplified Smart Locks, indulge in the riveting saga that is our manual. It's the prelude to a tale filled with electronic wizardry and keyless charm. Oh, and speaking of keys, stow away those backups in a secure spot for peace of mind!.

Now, pay heed, dear user: follow the sacred instructions with the precision of a royal guard's salute to steer clear of mishaps and keep your smart lock as dapper as a well-tailored suit. We wouldn't want any injuries or damage to spoil the elegance of your digital guardian, now would we?

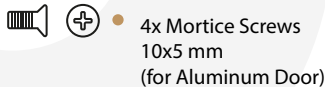
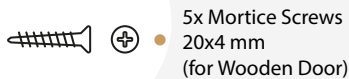
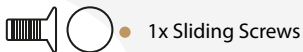
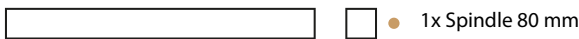
For more information and support on Simplified Slim Door Lock, feel free to contact us:  
[support@simplified.tech](mailto:support@simplified.tech)

## Product Overview



**Simplified**

## What's Included?



● 1x Cable Extender

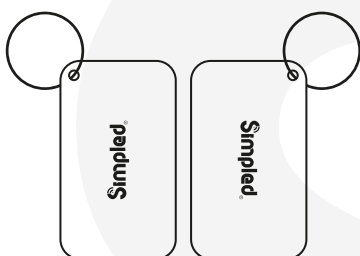
## What's Included?



**Simpled.**

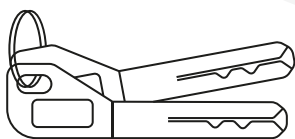
- 1x Phone Tag (Sticker)

Contactless Key



- 2x Proxy Fobs

Contactless Keys

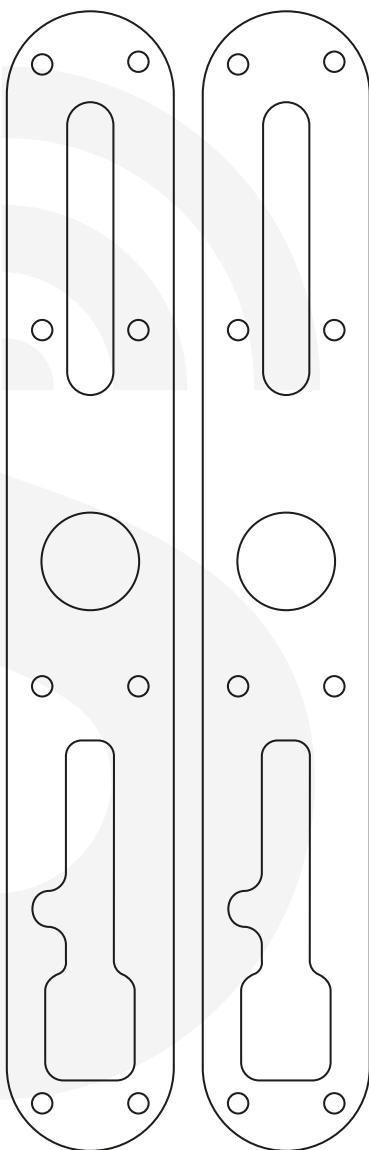


- 2x Emergency Key



- 4x Lithium Battery 1.5v

- 2x Rubber Gasket



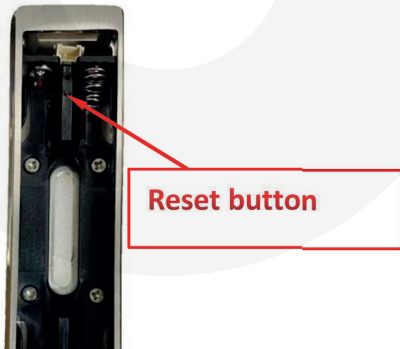
**Simpled.**

## Specification

Model	EF-SP	Doors Applicable	Aluminium Door Wooden Door - UPVC Door
Materials	Handle: SS304 Panel: SS304	Working Voltage	6V/4 x AA Batteries
Weight	2 KG	Door Thickness	35-60 mm (For more, you need Longer spindle and Screws)
Unlocking Methods	Bluetooth Fingerprint(option) Password Card Mechanical key Gateway(option)	Data Capacity	Fingerprint: 200 Passcode: 150 Card: 200
Colour	Silver - Black	Working Temperature	-10°C-55°C
Low Battery Alarm	Less than 4.8 v	Weatherproof	Yes

## System Initialisation

Here's the grand reveal, old sport: Pop open the cover plate on the front panel, give the "Reset" button on the back panel a good long press for a solid five seconds, and then, on the keypad, tap in the secret code "000#". Voila! Your initialization is complete!





We've put our wit into crafting a manual as clear as a summers day. But if you fancy a cuppa and to leave the task to a professional installer, give that QR code a cheeky scan – If you need a helping hand, never fear, Simplified's here!

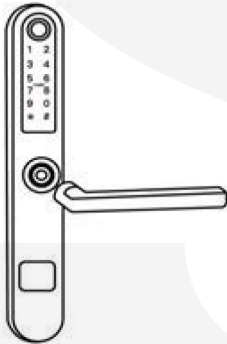
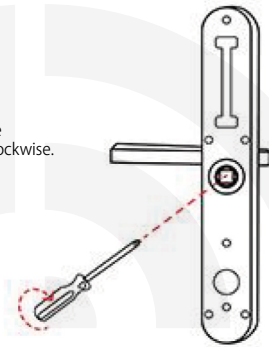
## Installation

(Outside Panel)

### Turn the handle

#### For Front Panel:

1: Give that handle on the front panel a graceful twist, my good fellow. Then start loosening those screws on the handle by turning them counterclockwise.



2: Pop the handle off

3: Once you've finessed the handle's direction to your liking, slide it back into its snug little seat. Then, re-tighten the handle screw. Ta-da! You've just pulled off the handle adjustment maneuver – a performance worthy of a standing ovation in the world of door theatrics. Bravo!"



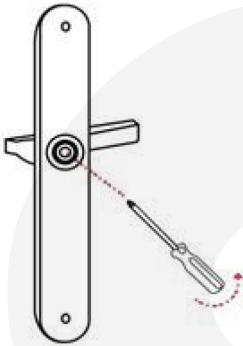
**Simplified.**

## Installation

(Inside Panel)

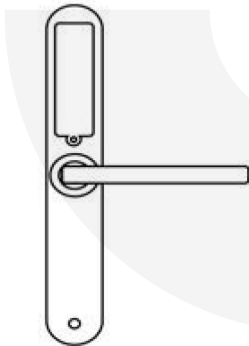
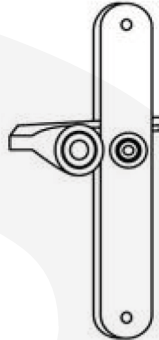
### Turn the handle

For Back Panel:



1: Give that handle on that back panel a graceful twist, my good fellow. Then start loosening those screws on the handle by turning them counterclockwise.

2: Pop the handle off



3: Once you've finessed the handle's direction to your liking, slide it back into its snug little seat. Then, re-tighten the handle screw. Ta-da! You've just pulled off the handle adjustment maneuver – a performance worthy of a standing ovation in the world of door theatrics. Bravo!"

Keep your eyes peeled, ladies and gents, for Simplified reserves the right to sprinkle a bit of magic dust on our products. Without much ado, we might tweak the functionality and design, all in the noble pursuit of ramping up performance and quality. Fear not, it's not a capricious act but rather a quest for perfection!

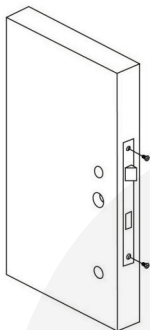
**Simplified.**

## Installation

(Outside Panel)

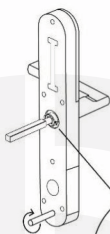
Step right up, handy DIY maestro! Let's waltz through the enchanted dance of installing the Simplified Smart Door Lock:

### Step 1: Install Mortice

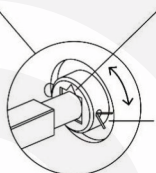


- Pop that screw into the hole and secure it nice and tightly.

### Step 2: Install Square Shaft



- If your handle points left, twist the triangle point to the left; if it points right, spin the arrow right.



- Insert the bolt, bend the front end to secure the square shaft, and choose a screw stub suiting your door's thickness.

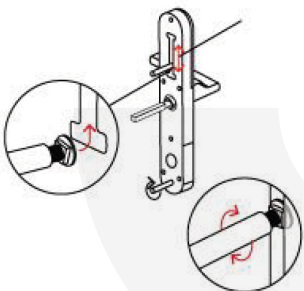
Fasten it with a U-Clip, making sure the arrow on the spindle aligns with the handle.



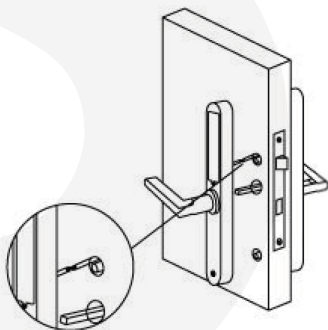
Point arrow to handle

**IMPORTANT:** Ensure the arrow on the spindle receptor faces the same way as the handle!

### Step 3: Install Sliding Screw Casing



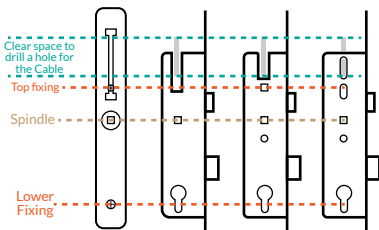
### Step 4: Connect Front and Back Panels Wire



- Adjust the screw stub location, a customizable feast ranging from 60mm to 100mm. Drill where needed or utilize existing holes, you trendsetter!

- Install a waterproof pad on the rear panel.  
- When drilling new holes, its often best to remove the multi-point mechanism after unscrewing it like a true locksmith, this avoids any mishaps that can damage the mechanism!

\* When you want to drill a new hole for the cable, you might need to remove the multi-point mechanism to locate a safe spot to drill.  
To remove the multi-point lock, you need to unscrew several screws down its length.



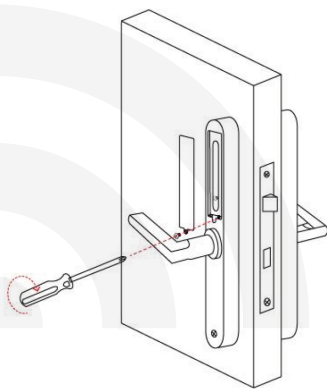
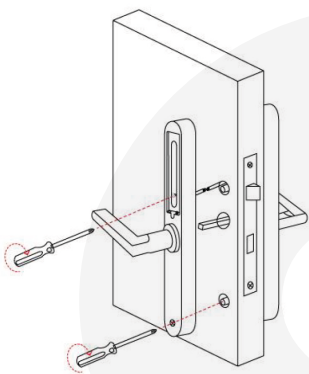
Different Multipoint lock Mechanisms

## Installation

(Inside Panel)

### Step 5: Install Back Panel

### Step 6: Install the Battery



- Secure the front and back panels with screws matching your door's thickness.
- Connect the front power cord to the back panel like connecting the dots.

- Energize your creation with 4 AA batteries.
- Seal the deal with the battery cover.

**TIPS:** Lift the handle, engage deadbolts / hooks; pull it down to disengage. The internal handle opens the door—always.

**TEST:** Outer handle down? It should move but do nothing. Insert keys, turn, lift the handle, and pull down—watch the latch/hook magic.

**Note:** Simplified Smart Lock auto-locks; spindle engages only with proper access (fingerprint, passcode, etc.). Lift handles for multi-points.

**Cleaning and Care:** No chemical hanky-panky; a damp cloth does the cleaning ballet.

Voila! You've conquered the Simplified Smart Door Lock realm. Now, peel off the protective film from the keypad – a finale fit for kings!

**Simplified**

## Operation

Embarking on the thrilling journey of Smart App setup? Fear not, brave soul, for here's your roadmap:

1. Download the "TTlock App"

- A. Head to the App Store or Google Play.
- B. Choose your adventure: Scan the QR code as if on a digital treasure hunt or gallantly search for the "TTLock" app.

2. Sign up and Add Smart Lock

- A. Enlist in the TTLock brigade by creating an account.
- B. Once in, add your smart lock to the device list, like a knight adding a trusty sword to their arsenal.

Congratulations, fellow tech enthusiasts! You've officially initiated the Smart App saga. May your digital endeavors be as seamless as a cup of Earl Grey on a Sunday morning.

Register

Email Phone

Enter your Email

Password

Confirm Password

Verification Code [Get Code](#)

Your password must have 8-20 characters, and include a minimum of two types of numbers, letters and symbols

Register

[By Registering you agree to our Privacy Policy](#)

Login Register

Hand icon with keyhole

Phone number/Email

Password

Login

[Forgot Password?](#)



Scan for more help!

Fear not, citizens of the digital realm! The gateway to our kingdom is wide open. You can pledge allegiance and register for an account using either your trusty email address or the noble mobile number, spanning across a vast expanse of 200 countries worldwide. Choose your herald wisely and join the global congregation!

**Simpled.**

## Operation

Venturing further into the realm of techno-wizardry? Here's your next set of enchantments:

### 3. Activate The Bluetooth Magic

- A. Gently caress the lock's keypad to awaken its Bluetooth slumber.

### 4. Add Lock to Your Digital Kingdom

- A. Tap the "+ Add Lock" Button.
- B. Choose your lock type—press "All Locks" if you're feeling a tad dubious on the type of lock you have purchased!

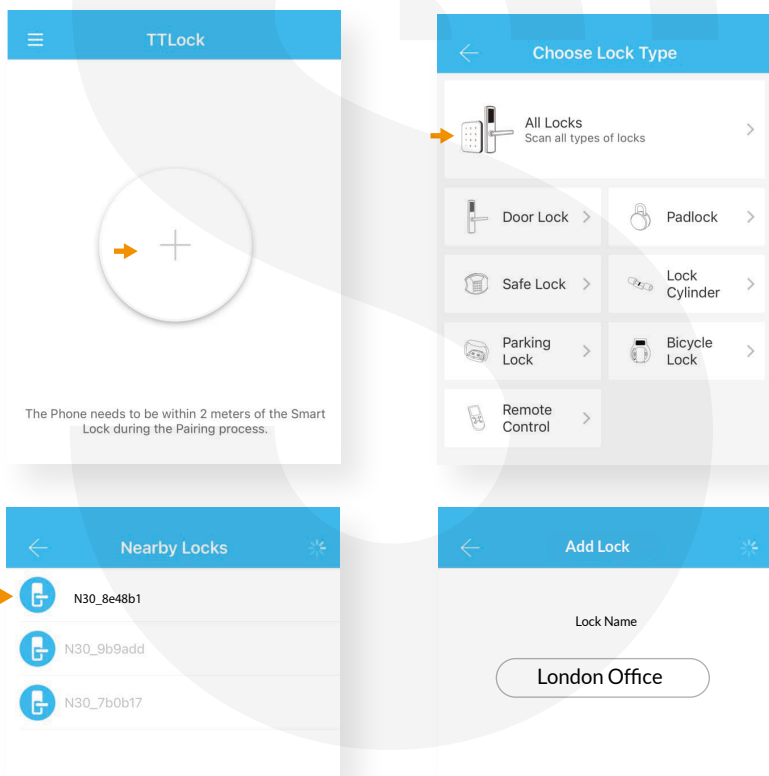
### 5. Seek Out Your Lock in the Bluetooth Wilderness

- A. In the "Nearby Locks" list, spot your lock like it's a game of where's waldo..
- B. Ensure you're in Bluetooth's 5 meter or so range, for this dance.

### 6. Bestow a Name Upon Your Lock

- A. Rename your lock with a moniker fit for a King or Queen – "Sweet Home," "Spain Villa," "London Townhouse," or any title that tickles your fancy.

Congratulations, O Digital Architect! You've summoned and named your lock, weaving another thread into the tapestry of your connected domain.



Attention, dear user! A nugget of wisdom for you: Typically, the secret handshake (or passcode, if you will) for a lock that's yet to join the digital party is the classic 123456.

## Bluetooth Unlock

Behold, the mystical Bluetooth Unlock incantation! To unlock the gates, tap the majestic "Lock Icon." But heed this, noble user: ensure the Bluetooth spirits are in good communication, and let not your phone stray beyond the 5-meter radius from the Simplified Slim Smart Lock. It's a dance of digital camaraderie, best performed within the enchanted range.

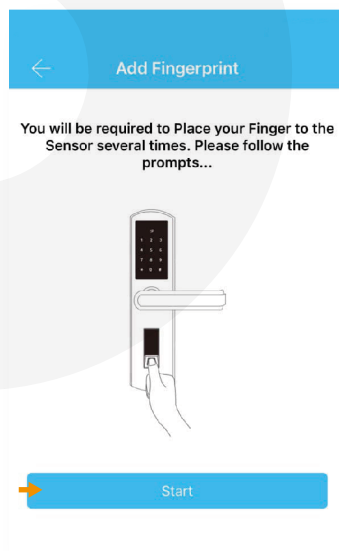
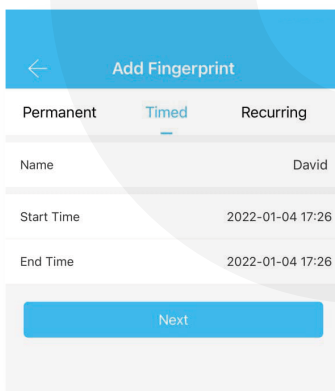
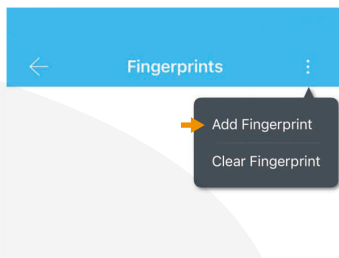
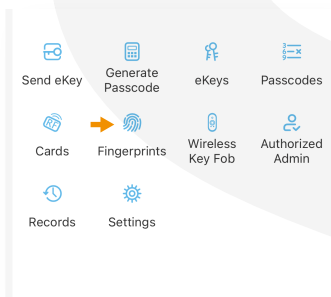
## Add Fingerprints

(Inside Panel)

Embarking on the sacred journey of fingerprint addition, are we? Here's the spell to weave that digital magic:

For adding a new fingerprint:

1. Navigate to the lock screen in the app, choose the mystical Fingerprint option.
2. Invoke the power of the three dots and tap them.
3. Select 'Add Fingerprint' like a summoning incantation.
4. Give your fingerprint a name, a moniker for the digital realms.
5. Decide if this fingerprint shall hold a temporary pass or wield eternal power.
6. Embark on the fingerprint creation ritual—press your fingertip four times upon the sacred sensor.
7. Behold! Witness the proclamation of success.
8. To truly know its might, test the fingerprint in the crucible of real-world unlocking.



## Adding Passcodes:

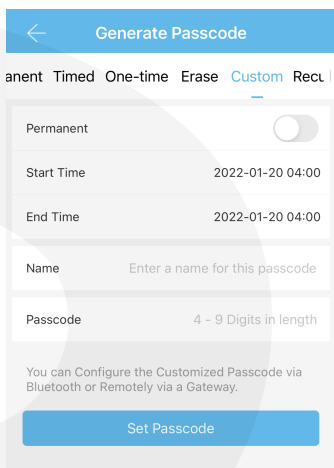
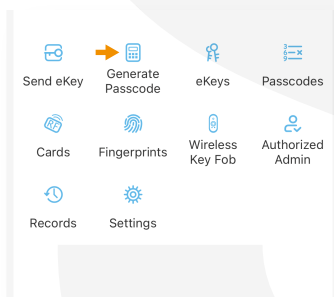
(Inside Panel)

Prepare to bestow digital keys upon your Simplified Slim lock, oh keeper of passcodes! Here's the roadmap to your digital fortress:

- Various passcode flavors await: permanent, time-limited, OTP (one-time passcode), cycle, or custom.
- Share the magic by dispatching passcodes through SMS, Email, or the modern scroll of WhatsApp.
- Craft, limit, share, and obliterate passcodes effortlessly when in the proximity of your lock. For remote passcode banishment, a Bridge is your trusty companion—details await in its dedicated section.

Gaining Access with Passcodes:

1. Awaken the lock with a gentle touch, like a secret handshake with your keypad.
  2. Enter the sacred passcode, and remember, before the era of new passcodes, the default passcode is 123456#.
  3. Seal the enchantment by pressing #.
- May your passcodes be as impenetrable as the night and as easily shared as a favorite tale!



## Passcode Management

"Welcome to the grand hall of Passcode Management! As the illustrious Admin user, here are your scepter and crown for controlling the passcode kingdom:

In the Passcodes Section, Thou Shalt:

1. Weave the threads of fate by changing, deleting, or resetting passcodes at your command.
2. Peer into the sacred archives to review the unlock records of passcodes—like a wise sage gazing into the annals of time.

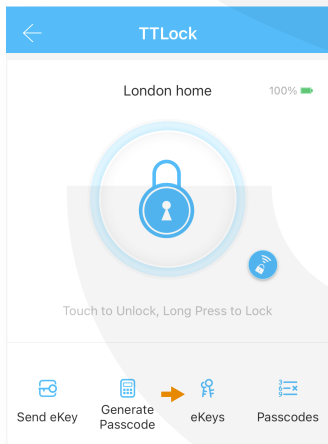
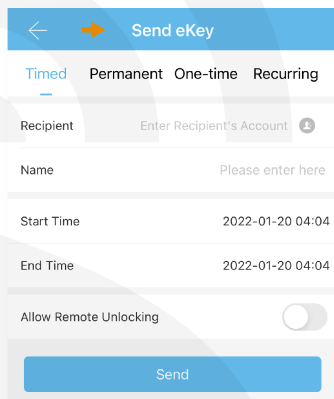
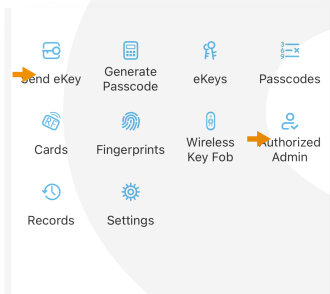
## Create and Send e-Keys

(Inside Panel)

Behold the power of digital hospitality! With the sacred act of selecting 'Send eKey' as depicted in the mystical figure, you shall weave electronic keys like a wizard crafting spells. Bestow these keys upon friends, family, the trustworthy dog walker, or even the heralds of your AirBnB kingdom.

To unlock the gates with the eKey, they must embark on a journey, downloading and signing up for a new account. This act of initiation also unveils the sacred knowledge of the time they opened the lock. The eKeys, akin to magical artifacts, come in various forms: Permanent, Time-Limited, One-time, and even recurring.

Fear not, for in the realm of electronic keys, you hold dominion! In the Authorized Admin section, you can elevate a chosen one to the esteemed position of Admin, giving them the power to govern alongside you.



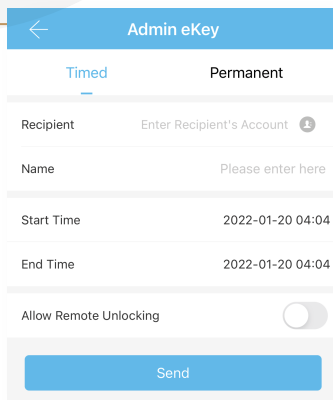
## e-Key Management

Click on eKeys. In this section, the Admin user can

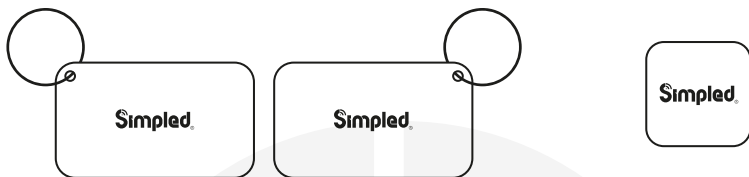
1. reset or delete eKeys.
2. review the access records.

## Create Admin

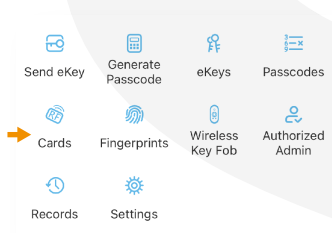
Enter the realm of Access Delegation! With this enchanting feature, you, as the master of the digital castle, can bestow the powers of a timed or permanent admin upon another soul. Imagine your receptionist or even an esteemed guest, empowered to add new denizens and even register their own fingerprints on the smart lock, all within the timeframe of their bestowed validity. Such is the magic of Access Delegation, where you share the keys to the kingdom with trusted allies, granting them a level of access akin to your own. A digital tapestry woven with threads of convenience and shared responsibilities awaits!



## Programme Card, Proximity Fobs, Phone Tag Stickers:



Enter the world of enchanted cards, proximity fobs, and phone tag stickers! But beware, before these mystical artifacts can unlock the gates, they must undergo the sacred ritual of programming. Just like the magical passcodes, these fobs and stickers can hold either permanent residency or be bound by the shackles of time, limited in their magical influence. Choose wisely, for the destiny of your digital realm lies in the programming of these artifacts!



←
Add Card

Permanent
Timed
Recurring

Name Please enter here

---

Start Time 2022-01-20 04:05

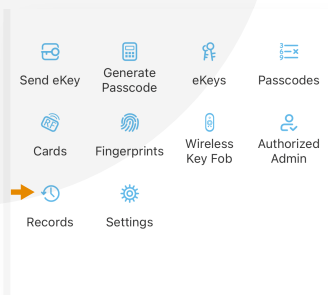
---

End Time 2022-01-20 04:05

Next

## Unlocking Records

Embark on a journey through the annals of time with the mystical 'Unlocking Records'! By tapping on 'Records,' you open a portal to review all the sacred tales of unlocks. Peer into the scrolls of history and unveil the secrets of each unlocking, like a digital historian unraveling the mysteries of your enchanted realm.



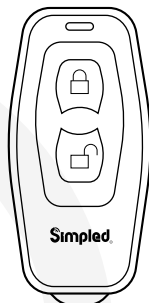
(Inside Panel)

## Pair Wireless Key Fob

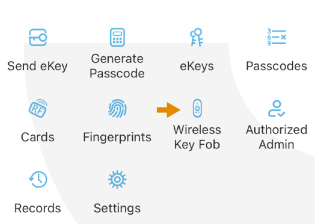
Embark on the noble quest of pairing the Wireless Key Fob, the Bluetooth Remote Controller, with the elegance befitting a digital knight:

Initiate the Ceremony:

- A. Tap the sacred "Wireless Key Fob."  
Conjure the Fob:
- A. Add the Key Fob
- B. Choose your Fob's destiny—Permanent, Timed, or Recurring—like assigning roles in a grand play.  
Bestow the Blessing:
- A. Perform the ritual: Long-press the Locking Key on the Remote Controller for a count of five.
- B. As the light dances in approval, tap "Next" swiftly, capturing the moment when the light flashes in harmony.



Listen closely, seeker of seamless access! The Bluetooth remote control, a digital companion of noble lineage, is destined to join forces exclusively with one side of the lock. For a truly harmonious access experience with a single set, it is sagely advised to bind its fate specifically with the inner handle.



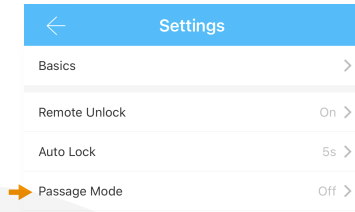
**Simpled**

## Behold, the steps to unlock the secrets of Passage Mode:

1. Choose your gatekeeper – the lock itself.
2. Gracefully tap on "Settings."
3. Select the ethereal "Passage Mode."
4. Bestow life upon this mode by turning it on, then seal the enchantment with a press of 'Save.'

A word of wisdom: To awaken Passage Mode, unlock it once with the app's magic touch!

And lo, when Passage Mode is active, a long-press of '#' shall wield the power to force-lock the Simplified lock.



## Embarking on a journey to transfer the wisdom of an old Simplified lock to a new heir? Fear not, for the ritual of data transfer unfolds as follows:

### Anoint the New Lock:

- A. Choose the new lock within the app, as if selecting a worthy successor.

### Utter the Incantation:

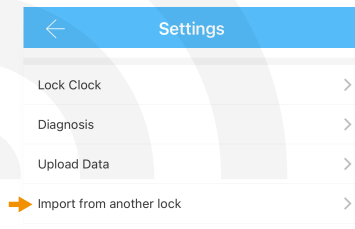
- A. Tap the sacred "Settings."

### Invoke the Transfer Spell:

- A. Select the mystical "Import from another lock."

### Anoint the Old Lock:

- A. Choose your old lock from the list, passing on the digital torch to the chosen one.



## To orchestrate the melody of your lock's sound, follow this symphony:

### Unveil the Maestro:

- A. Open the app, the grand stage of your digital orchestra.

### Select the Instrument:

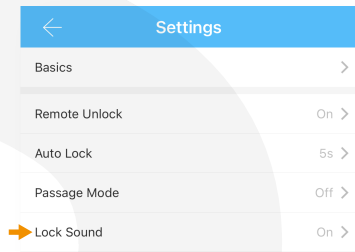
- A. Tap on the lock, the virtuoso performer.

### Cue the Harmony:

- A. Choose the enchanting "Settings."

### Toggle the Sound:

- A. Disable or enable the Lock sound, like the conductor commanding the instruments to play or rest.



## Preparing to pass the digital scepter to a new owner? Here's the ceremonial ritual:

### Open the Gates:

- A. Unlock the app, your portal to the digital realm. Navigate to the Three Lines in the Top Left.:
- A. Tap the (Top Left), the emblem of authority.

### Seek the Settings:

- A. Choose the "Settings."

### Unlock the Transfer Portal:

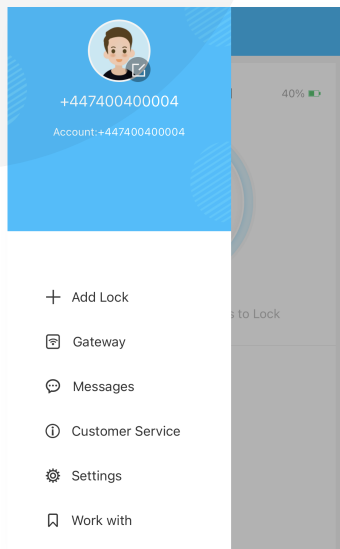
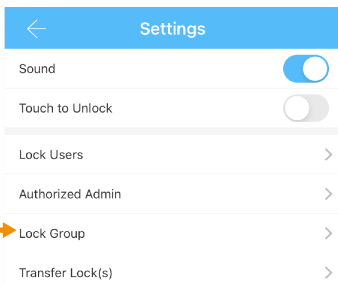
- A. Tap into the sacred "Transfer Lock(s)."

### Choose the Heir:

- A. Select the lock(s) worthy of the new owner, then press 'Next.'

### Anoint the New Ruler:

- A. Enter the new owner's account details, and with a final tap of 'Next,' witness the permanent transference.

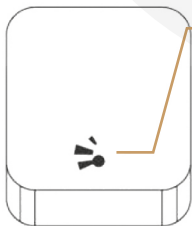


## WiFi Bridge Pairing

Prepare for a grand alliance with the Simplified Smart WiFi Bridge – the beacon connecting the realms of Simplified Smart locks and the vast expanse of WiFi. With this Gateway, you shall wield the power to:

- Unlock the Gates from Afar:
  - A. Open your lock's embrace from any corner of the earth.
- Read the Chronicles of the Lock:
  - A. Delve into the remote archives, deciphering the tales of fingerprints and passcodes.
- Command the Flow of Time:
  - A. Calibrate the lock's clock from a distance, as if wielding a time-bending scepter.
- Govern Passcodes from Afar:
  - A. Remotely delete and modify passcodes, shaping the destiny of your digital fortress.
- Summon the Voices of the Ancients:
  - A. Integrate the Simplified lock with the echoes of Alexa.
- Dance with the Echoes of Google:
  - A. Enchant your Simplified lock to respond to the whispers of Google Home.

## Light Status

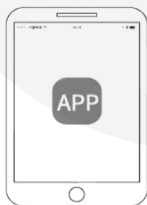


When the WiFi Bridge is powered on:

- Light Flashes alternately in Red and Blue: Stand-by mode, ready for pairing
- Blue light: Working mode
- Red Light: Network failure

## Pair the Gateway with APP

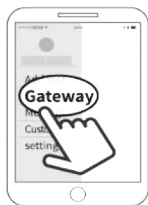
1 Activate the APP



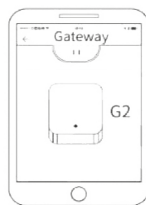
2 Pres "☰"



3 Select (Gateway)

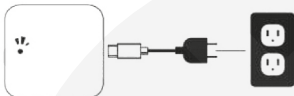


4 Select (G2)



## Pair the Gateway with APP

- 5 Plug in the Gateway and power it on, while the light Flashes alternately in red and blue



- 6 Press “+” sign



- 7 Add (Gateway)      8 Select the network and fill in the password



- 9 Add complete

Notice: If times out, please turn off and on, and try it again.

Once the WiFi Bridge has pledged allegiance to your digital kingdom, don't forget to unfurl the banner of power by activating the 'Remote Unlock' feature. Journey into the sacred TTlock settings and, with a simple toggle, unleash the magic that allows you to unlock the gates from afar.



Scan for more comprehensive  
TTlock app manual.

**Simplified**

## FAQ

### 1. Can I keep my previous multipoint lock?

We designed it to fit most existing 'lever up' multipoint mechanisms.

These are typically found on UPVC doors. So in 95% of the cases, the answer is yes.

There is no need to replace your current mortice.

Get in touch if you need more information.

Support@simpled.tech

### 2. I just installed the door, and although the locks verified my access, nothing happens when turning the handle from outside.

It can be because of the wrong direction in the arrow on the spindle. Please review the installation instruction (Installation Section - Installing the Spindle)

### 3. The spindle receptor used to rotate freely, but now it is frozen. Why?

Change the battery and try to gain access with a passcode or via the app; Now, the motor should disengage the spindle, and it should rotate freely.

### 4. I can not change the passcode. It says Operation failed.

First, ensure your smartphone is within 2 meters of the cylinder when setting the passcode. If it is, turn off your smartphone's Bluetooth for 10 seconds and turn it on again.

### 5. After installation, I touched the keypad, but there was no response. What is the reason?

A) Check if the battery is placed correctly and if it has enough power.

B) Remove the back panel and check if the cable is connected properly.

C) Unmount the lock and make sure the cables are not squeezed or damaged.

### 6. What's the purpose of the Auto-Lock?

To set a timer for the Smart lock to be automatically locked after each time you unlock it.

### 7. I had a problem registering my fingerprint.

Check if your fingerprints are clean without any dirt or wear. Clean the sensor with a soft cloth making sure there's no oil, stains, etc.

### 8. What is the reason the batteries ran out?

It can be due to long standby or a Short Circuit caused by a damaged cable.

### 9. Why can't I unlock the lock after activating the passage mode?

The lock needs to be unlocked once, and only then, the passage mode will be activated.

### 10. What happens if you enter the wrong password into the lock too many times?

After five failed attempts to enter your passcode, your lock will be disabled for 5 minutes. You can try other unlocking methods.

### 11. How can I read the operation records?

Open the app 2. Select your lock 3. Select "Records"



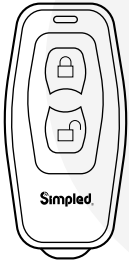
For the latest FAQ and support page, please scan this Code:

**Simpled**

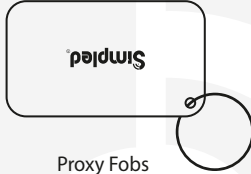
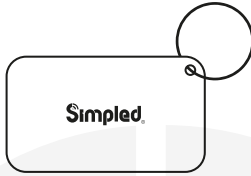
# Want more Accessories? Here is all you want:



More accessories?  
SCAN HERE



Bluetooth  
Remote Controller



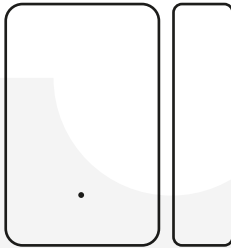
Proxy Fobs  
(Contactless Key)



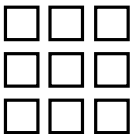
WiFi Bridge



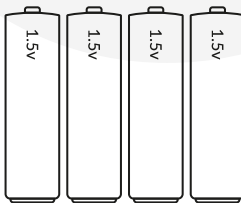
Phone Tags  
(Contactless Key)



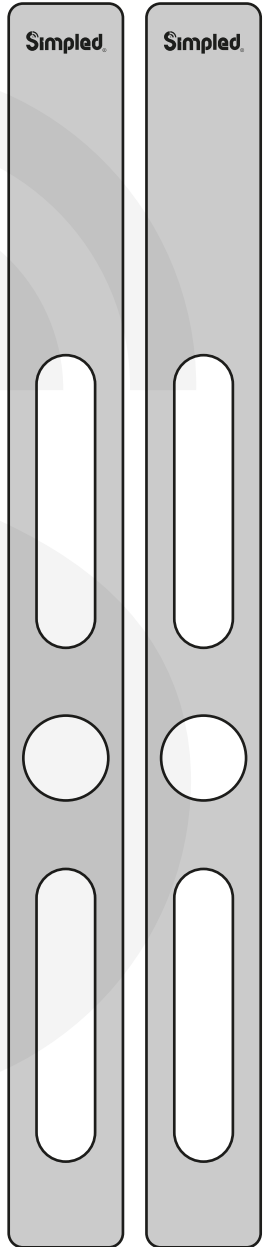
Door Sensor



Another Smart lock  
for other doors



Alkaline Batteries



Covering Plates



Smart lock for  
a friend or family





## Contact us:

---

### Note:

1. We provide you with a two-year warranty from the date of purchase.
  2. This warranty service is valid for customers in any country in the world.
  3. For more help please contact us:  
[Simpled.uk/support](http://Simpled.uk/support)
- 



**WOW!**

We're just happy that you're happy.  
If you don't know how to express your newfound joy, we've got a few suggestions...



**Tell** your friends and family



**Share** your experience by writing a review on Amazon

**OR**



**Connect** with us on [simpled.tech](http://simpled.tech)  
Facebook, Twitter and Instagram



Easy Amazon Review  
Scan me!



**MEH.**

Our friendly customer service team will work hard to put a smile back on your face.  
Here's how we can connect:

✉ [support@simpled.tech](mailto:support@simpled.tech)

🌐 [Simpled.uk/support](http://Simpled.uk/support)

**Simpled.**