

# 15" ORTEGA

## STAINLESS STEEL UNDERMOUNT PREP SINK

SKU: 948560



### FEATURES

Basin Split: Single  
Shape: Square  
Sink Installation: Undermount  
Faucet Centers: No Faucet Hole  
Number of Basins: 1  
Product Color: Stainless Steel  
Metal Gauge/Thickness: 16 Gauge  
Faucet Included: No  
Faucet Holes: No Faucet Hole  
Drain Included: Optional  
Reversible Mounting : Yes  
Exterior Treatment: Smooth  
Interior Treatment: Smooth  
Made of 304-Grade Stainless Steel  
It is Recommended to Have the Sink at the Job Site  
Before Cutting Cabinet or Countertop  
Sound Absorption Pads on the Underside of the Sink  
Has an Undercoating to Prevent Condensation Buildup  
Suitable For Undermount or Drop-In Installations

### CONTENTS

SINK ..... PAGE 2

### SIGNATURE HARDWARE Lifetime Warranty

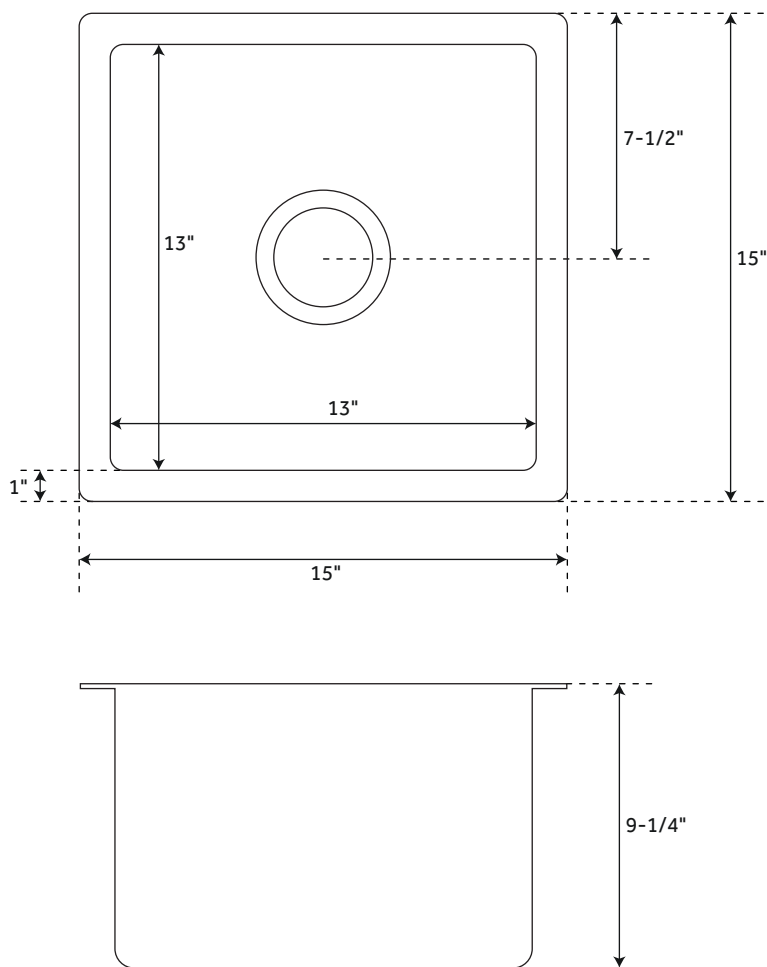
See website for detailed warranty information.

REVISED 01/23/2020

# 15" ORTEGA

## STAINLESS STEEL UNDERMOUNT PREP SINK

SKU: 948560



### FEATURES

Material: Stainless Steel  
Length: 15"  
Width: 15"  
Height: 9-1/4"  
Basin Length: 13"  
Basin Width: 13"  
Water Depth to Rim: 9"  
Rim Thickness: 1"

### CODES/STANDARDS

cUPC  
ASME A112.19.3/CSA B45.4

### SIGNATURE HARDWARE LIFETIME WARRANTY

See website for warranty information



All dimensions and specifications are nominal and may vary. Use actual products for accuracy in critical situations.

PAGE 2  
Code: SHORUC1515