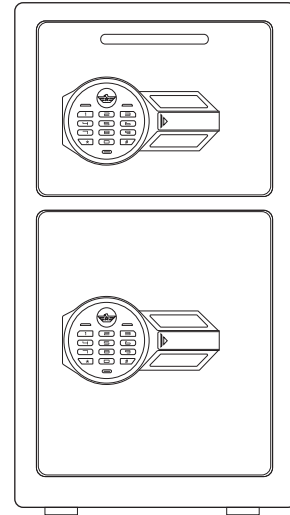


Instruction Manual

Suitable for KM-75



CATALOGUE & WARNING

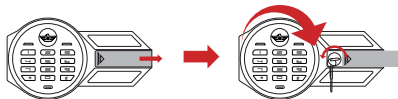
Warnings	1
Box Contents	2
Set Up the Code	3-4
Open / Close the Door.....	5
Additional Features	6
Bolting Down Your Safe	7

Warning

1. Do not lock the emergency key or usb type-c cable into your safe.
2. If the safe box is not used for a long time, the battery should be removed to prevent leakage of liquid from damaging the electronic system.
3. Purchase 4 AA batteries in advance, this safe does not contain batteries.

SET UP THE CODE

➤ Step 1: Open the door with the key



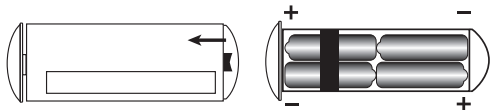
1. Right slide the keyhole cover to expose the emergency keyhole.
2. Insert the emergency key, turn it counterclockwise to the limit, and hold on it.
3. Then rotate the knob clockwise to open the door.

- ▲ NOTICE:
1. When you rotate the knob to open, you must have the key fully inserted and turned counterclockwise to the limit, keeping the key until the safe unlocked and opened.
 2. Use the key to unlock, the led light will not light up.
 3. Please keep the keys in a secure place, do not lock the keys inside the safe.

➤ Step 2: Install Battery

1. After first opening, keep the safe open and locate the battery case, prepare 4 brand-new AA 1.5 Volt alkaline batteries (not included).
2. Remove the internal battery case cover and install the 4 AA batteries by matching the + & - electrode.

- ▲ NOTICE:
1. Rechargeable battery is not recommended as it may destroy the internal electronic components of your safe.
 2. Please use brand-new batteries, do not mix used batteries with new batteries.
 3. After opening the door, if the safe **beeps** 6 times in a row, it means the batteries are out of power, please replace the batteries.



ADDITIONAL FEATURES

DUAL ALARM SYSTEM

1. After 3 consecutive times of wrong code, your safe will activate the alarm system, the alarm will sound for 30 seconds, enter the correct code and the alarm will be cancelled.
2. In standby state, press *, there is a beep and all the lights came on at once, the vibration alarm mode is turned on. If the box is shaken or hit violently, it will give an alarm immediately for 30 seconds, at this point, enter the correct code to stop the alarm.

▲ NOTICE:

1. When power on, the system default for alarm is off.
2. After safe is opened with code, the vibration alarm will turned off and needs to be turned on again.
3. When you forget the code, the alarm can be stopped by using the key to open the safe and remove the battery to cut off the power.

RESET THE SYSTEM

1. Press and hold the setting button for 3 seconds, the buzzer plays a chord, indicating the reset successful (All stored codes will be deleted, please use the default code to unlock).
2. The default code is **123456**, need to be modified.

MUTE FUNCTION

1. In standby state, press **1** twice, then press **#**, there is a long beep, indicate the mute function is turned on.
2. In mute function state, press **1** twice, then press **#**, there is a long beep, indicate the mute function is turned off.

▲ NOTICE:

Under the mute function, the wrong code alarm and vibration alarm still work, and the alarm will sound when triggered.

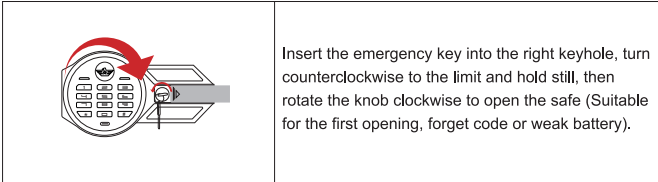
UNDER VOLTAGE WARNING

When the voltage is around 4.8V, after opening the door, the buzzer will **beeps** 6 times in a row, reminding the user that the battery power is low and the user needs to replace the battery.

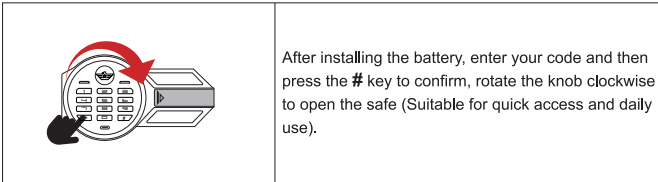
OPEN / CLOSE THE DOOR

THREE WAYS TO OPEN THE DOOR

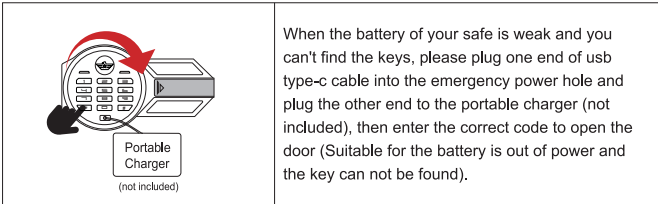
1. The first way to open: Use the emergency key.



2. The second way to open: Use the code.



3. The third way to open: Use the usb type-c cable + code



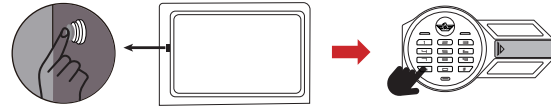
CLOSE THE DOOR

Close the door and rotate the knob counterclockwise.

SET UP THE CODE

Step3: Set up the code

1. Open the safe, keep the safe opening, press the setting button (on the inner side of the door) for 1 second, the safe beeps once and keypad light on.
2. Input a new code(3-12 digits), then press # to confirm. The buzzer plays a chord, indicating that the code is successfully set.
3. Testing the code before you close the door.



Step4: Set up the second code

1. Open the safe, keep the safe opening, enter 0 twice, then press the setting button (on the inner side of the door) for 1 second, the safe beeps once and keypad light on.
2. Input a new code(3-12 digits), then press # to confirm. The buzzer plays a chord, indicating that the code is successfully set.
3. Testing the code before you close the door.

▲ NOTICE:

1. 10 seconds without any operation after pressing the setting button, it will go back to standby mode, you need to retry from **STEP3**.
2. Please set up both of two codes immediately after receiving the safe.
3. The default code is **123456**, need to be modified.

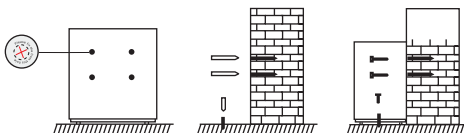
BOLTING DOWN YOUR SAFE

BOX CONTENTS

TOOLS NEEDED TO BOLT SAFE

1. Drill (not included)
2. Marker pen (not included)
3. Expansion screws (included)

MOUNT THE SAFE



Step1:

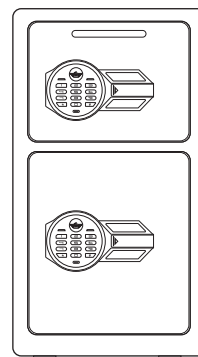
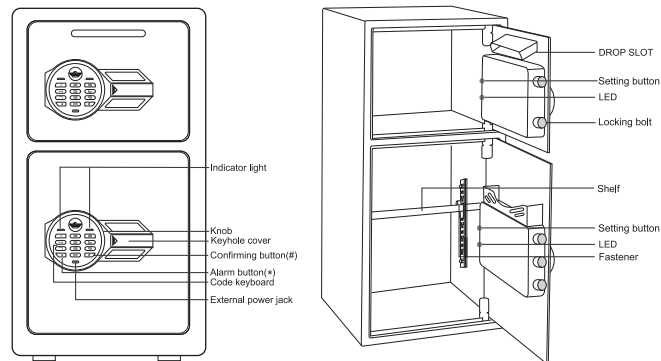
Place the safe at the installation place (wall or floor), mark the drilling spots on the wall/floor from the inside pre-drilled holes.

Step2:

Remove the safe and drill a about 10 mm hole in the wall or floor with drill bit.

Step3:

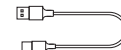
Position safe in place and install screws through safe in to the holes. Tighten screws.



Safe box *1



Quick start guide*1



USB type-c cable*1



Foot mats*4



Expansion screws*6



Emergency keys*4

▲ NOTICE: The keys are in the accessories bag on the door.