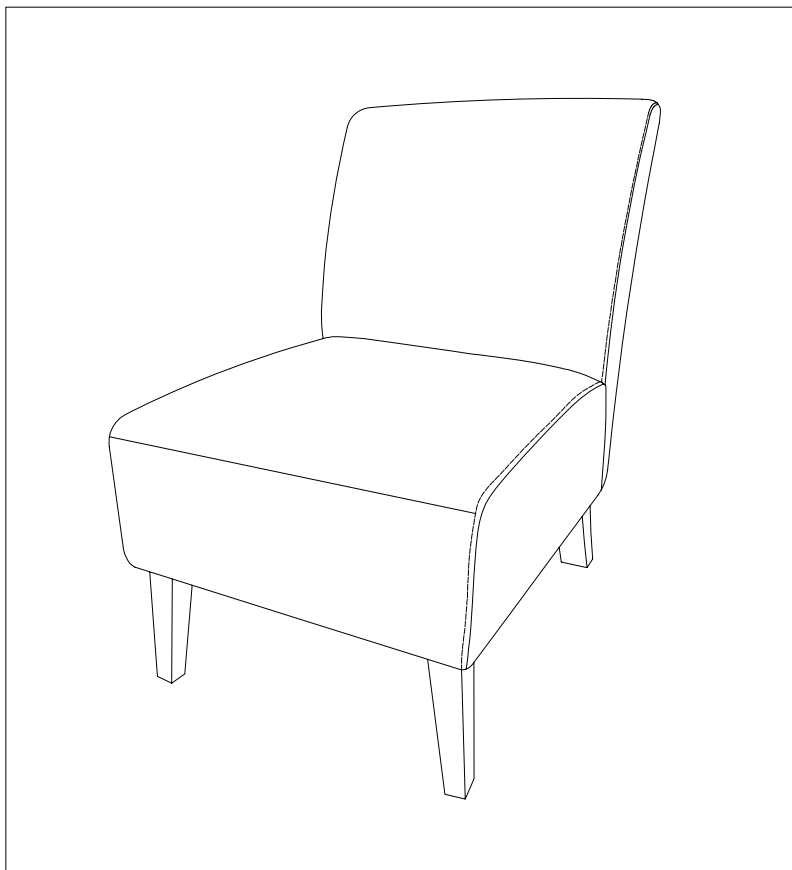

ASSEMBLY INSTRUCTIONS

CHAIR



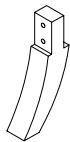
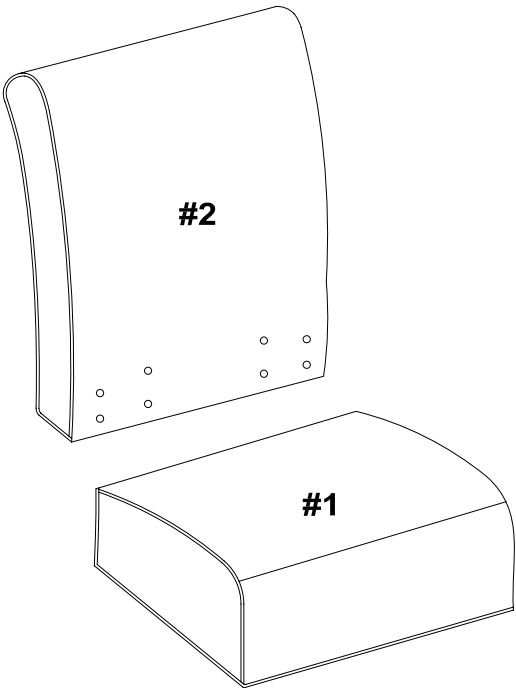
We are here to help!

We do our best to insure that your furniture arrives in excellent condition.

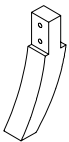
MADE IN CHINA

PARTS IDENTIFICATION

ITEM	DESCRIPTION	QTY
#1	CHAIR SEAT	01
#2	CHAIR BACK	01
#3	BACK LEG	02
#4	FRONT LEG	02



#3



#3



#4

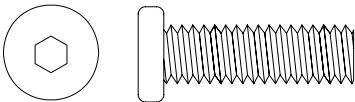
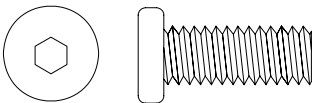
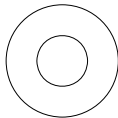




#4

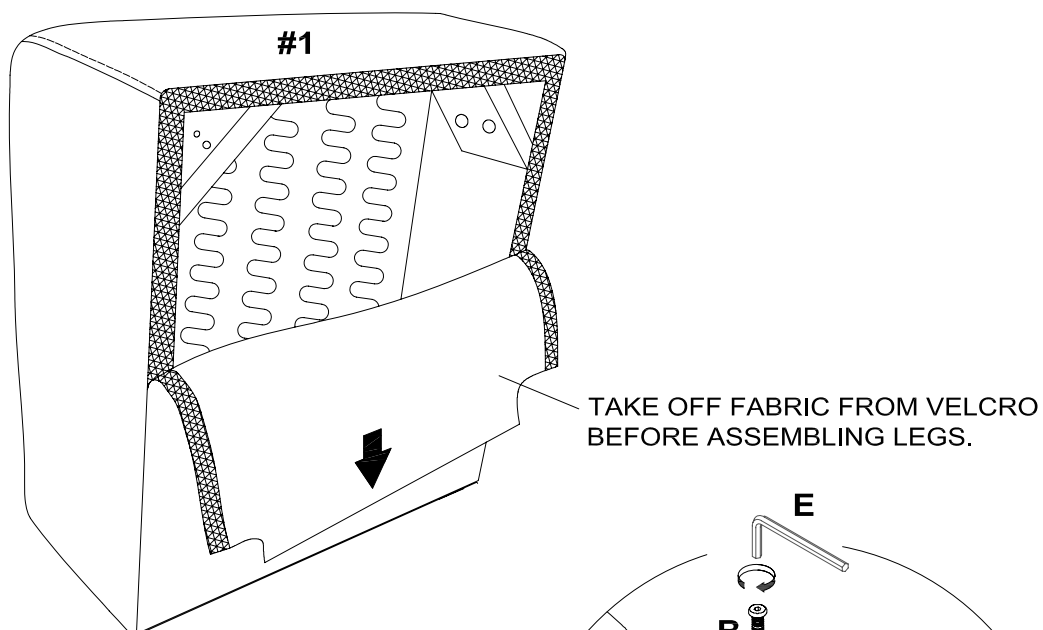
For ease of identification all parts are labeled to correspond to the Step number in which the part is used.

HARDWARE IDENTIFICATION

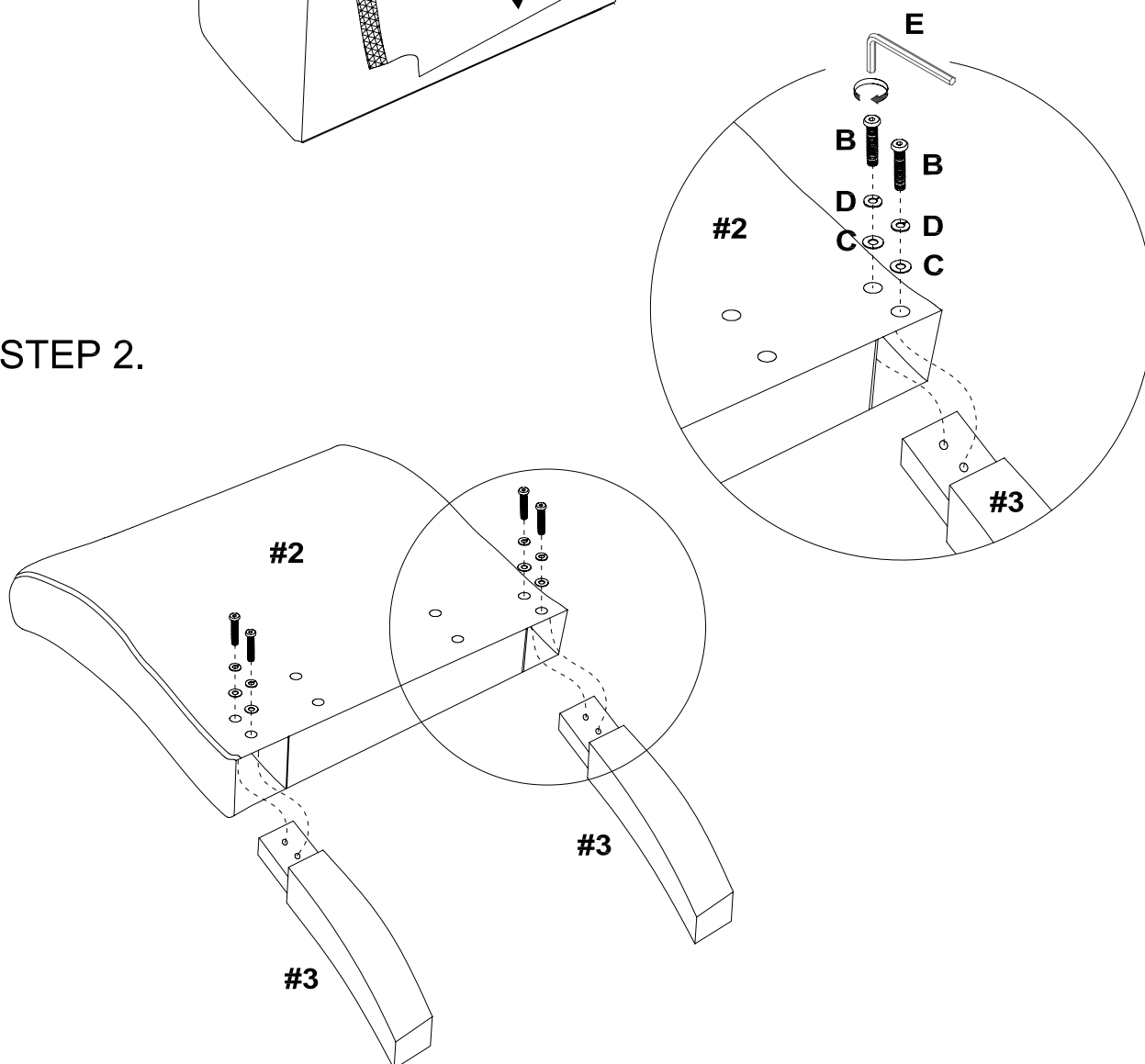
Please line up the hardware with the correct full size image to make sure you are installing the hardware correctly.

ITEM	PICTURE	DESCRIPTION	QTY
A	 (Ø5/16"x2-3/4") Not to Scale	LONG BOLT	02
B	 (Ø5/16"x2") Not to Scale	SHORT BOLT	10
C	 (Ø5/16") Not to Scale	FLAT WASHER	12
D	 (Ø5/16") Not to Scale	SPRING WASHER	12
E	 Not to Scale	ALLEN KEY	01

STEP 1.



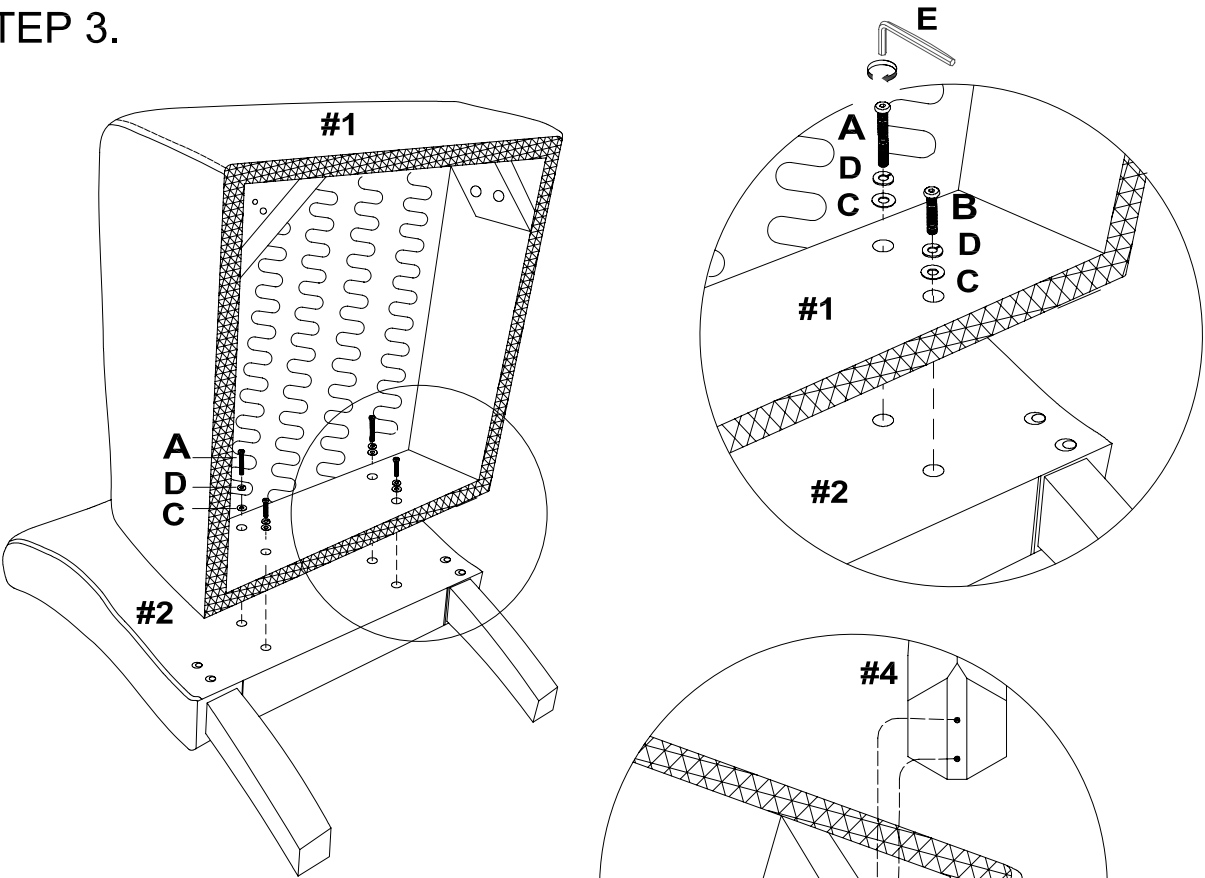
STEP 2.



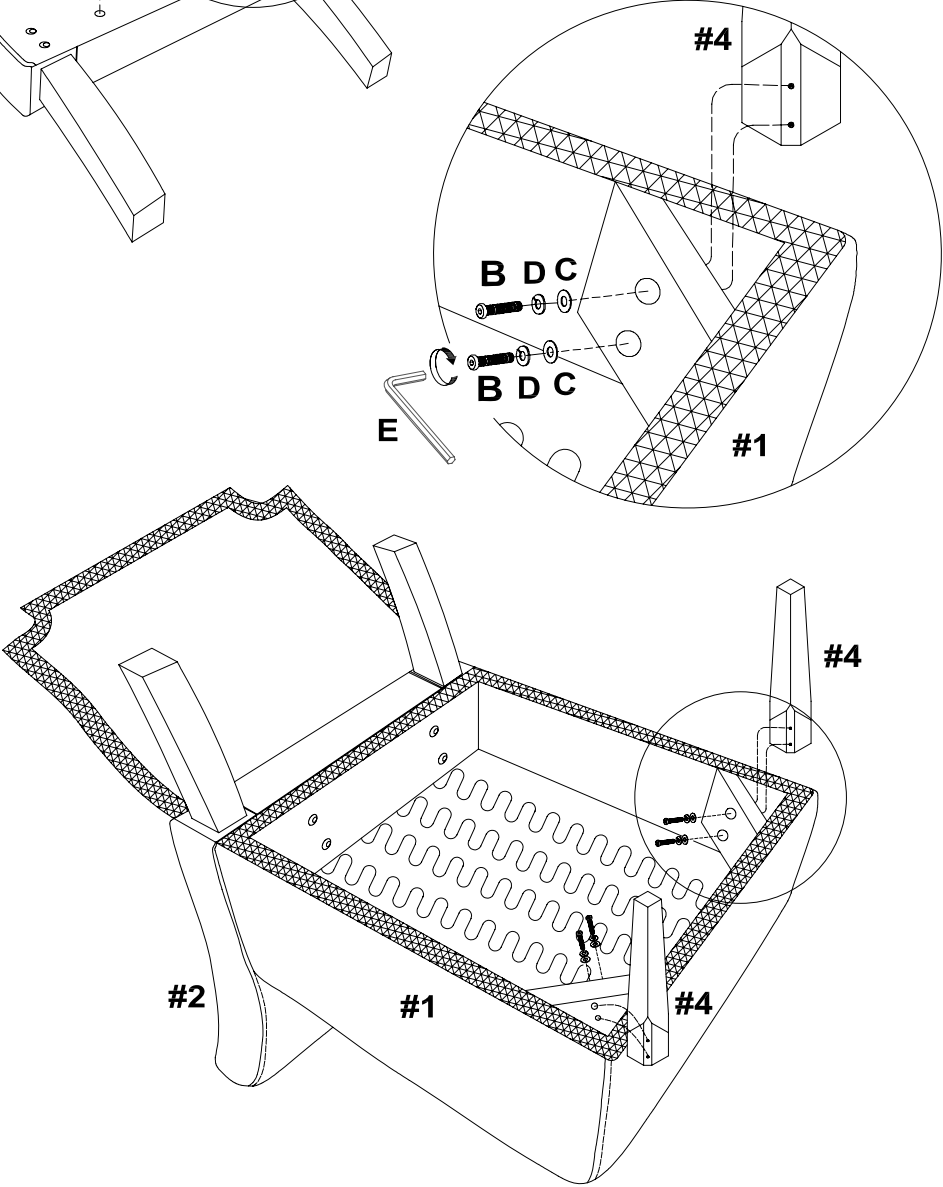
IMPORTANT:

1. DO NOT TIGHTEN BOLTS COMPLETELY UNTIL ALL BOLTS ARE COMPLETELY LINED UP AND INSERTED INTO HOLES / NUTS.
2. DO NOT OVER TIGHTEN SCREWS AND BOLTS TO AVOID STRIPPING.

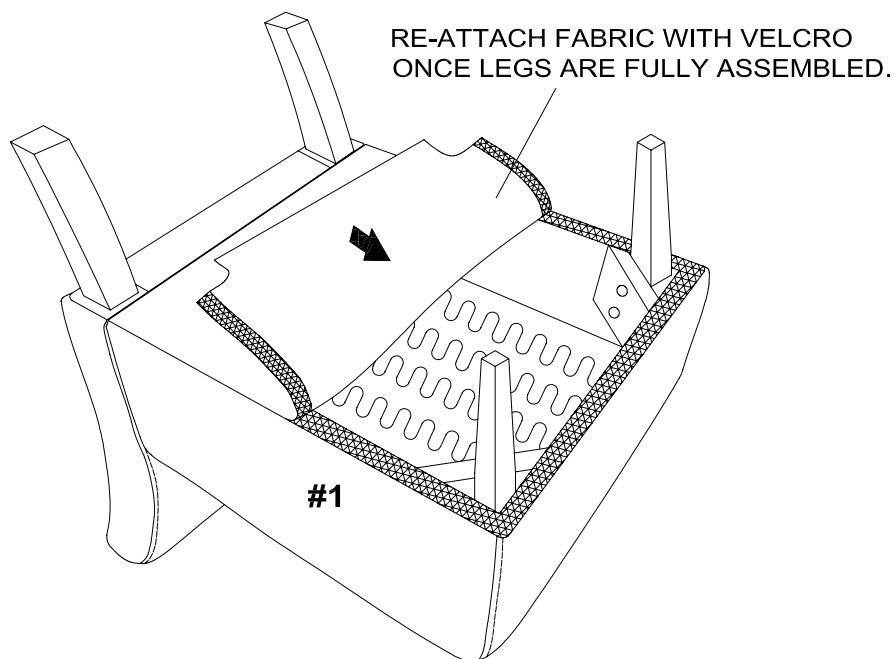
STEP 3.



STEP 4.

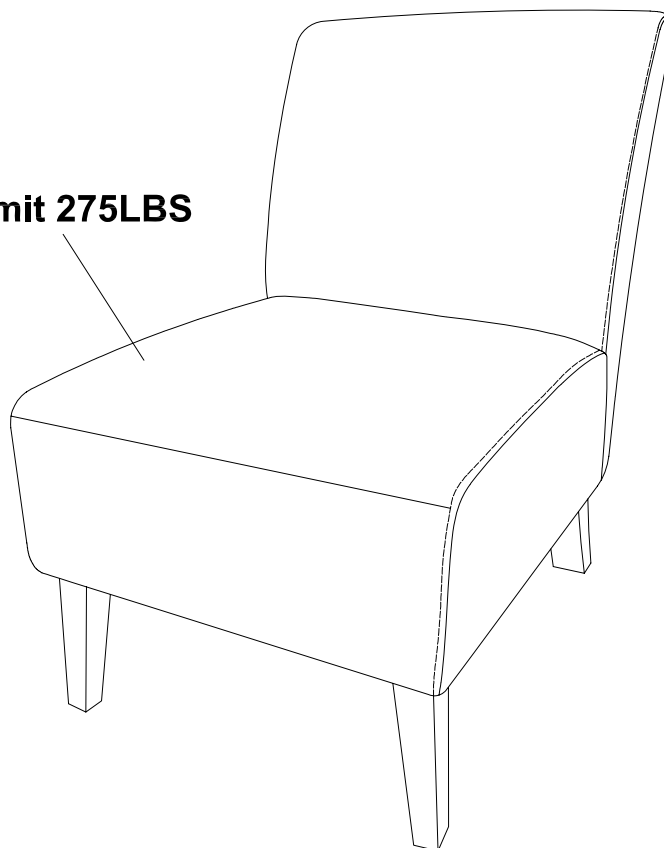


STEP 5.



STEP 6.

Weight Limit 275LBS



LIMITED WARRANTY

WHAT IS COVERED

WHAT IS NOT COVERED

HOW TO OBTAIN SERVICE