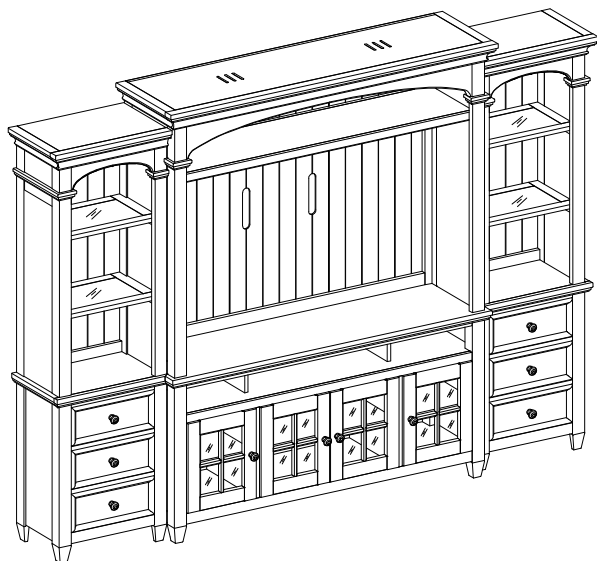


ASSEMBLY INSTRUCTION

DESCRIPTION : ENTERTAINMENT HUTCH ENTERTAINMENT TV STAND LEFT PIER RIGHT PIER

Thank you for purchasing this quality product. Be sure to check all packing material carefully for small Hardware which may have come loose inside the carton during shipment. Identify and count all Hardware and compare with the Hardware List Below.


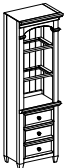
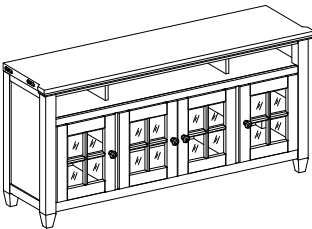


Hutch Parts List

①		②	
Light Bridge : 1pc		Adjustable Shelf : 1pc	
③		④	
LSF Frame : 1pc		RSF Frame : 1pc	
⑤		⑥	
Top Back Rail : 1pc		Bottom Back Rail : 1pc	
⑦		⑧	
Top Back Rail Support : 1pc		Bottom Back Rail Support : 1pc	
⑨		⑩	
Side Back Panel Frame : 2 pcs		Center Back Panel Frame : 1pc	

Parts List

Description

 <p>Glass Shelf : 2pcs</p>	 <p>Glass Shelf : 2pcs</p>
Left Pier : 1pc	Right Pier : 1pc
 <p>TV Stand : 1pc</p>	

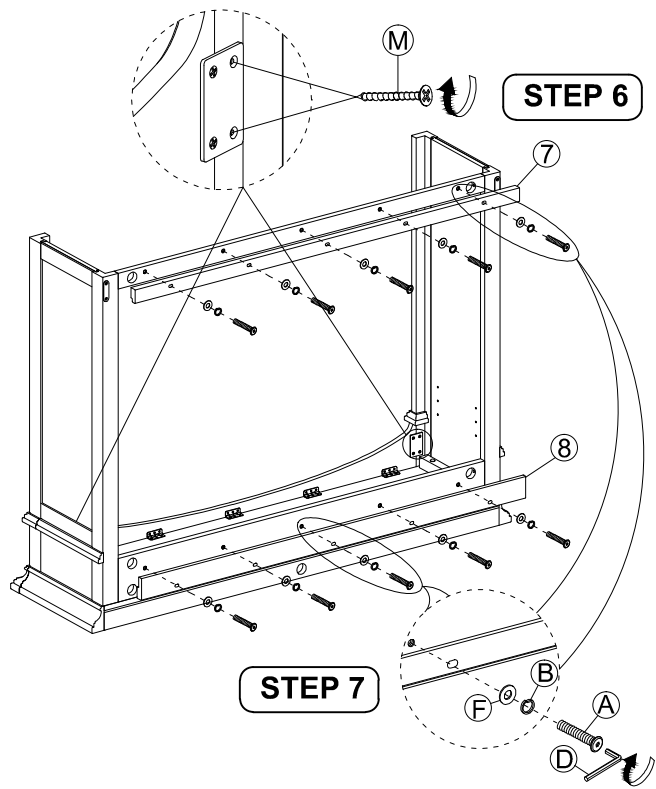
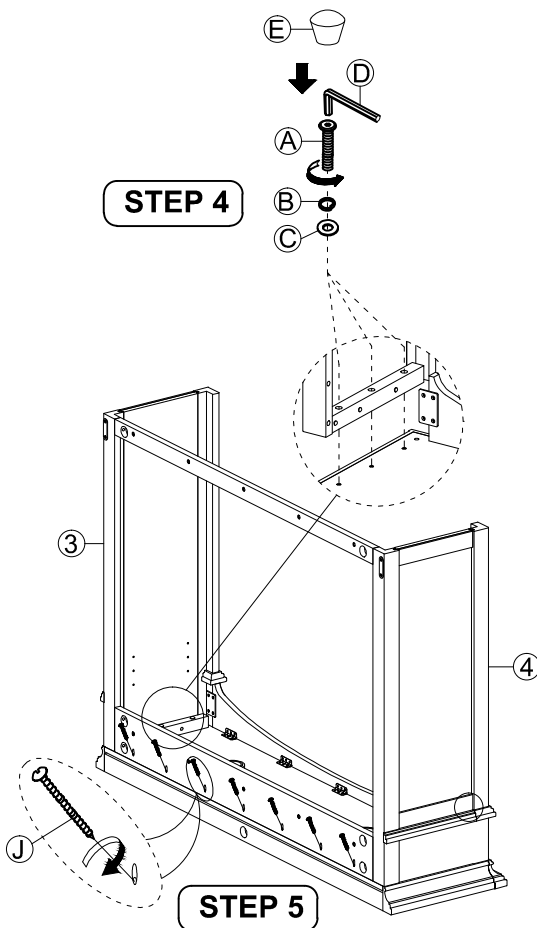
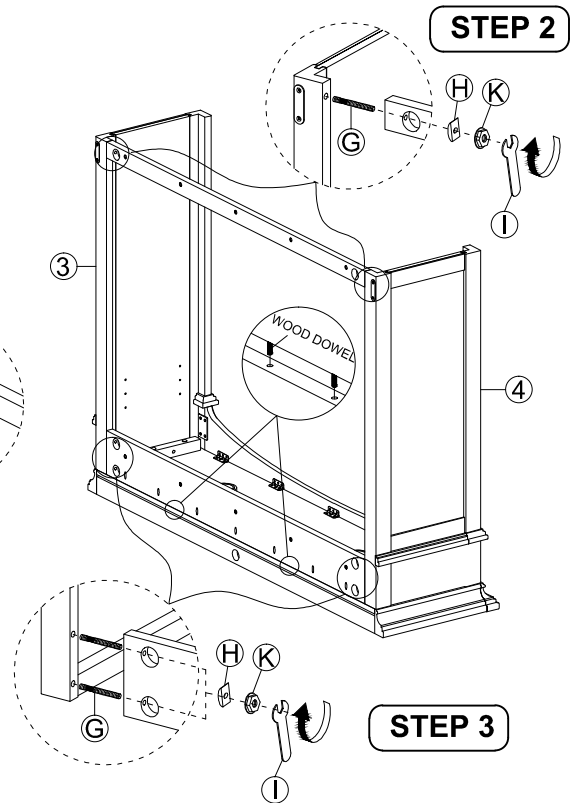
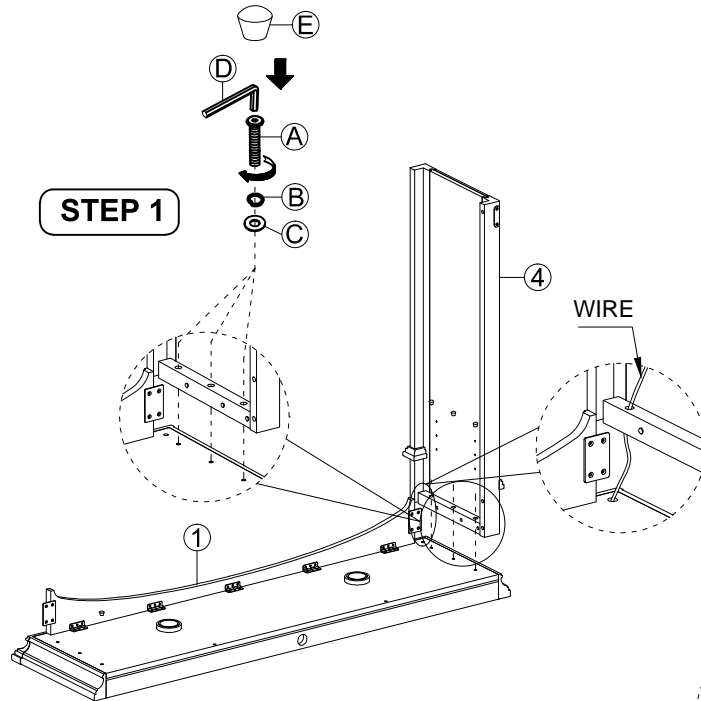
Assembly Hardware Pack

⑪

No.	Description	Hardware	Qty.
(A)	JCBC Screw Ø1/4" x 40mm		22 pcs
(B)	Spring Washer Ø1/4"		22 pcs
(C)	Flat Washer Ø1/4" x 13mm		6 pcs
(D)	Allen Key M4		1 pc
(E)	Wood Cap		6 pcs
(F)	Flat Washer Ø1/4" x 19mm		16 pcs
(G)	Hanger Bolt Ø5/16" x 89mm		6 pcs
(H)	Round Half Washer Ø5/16"		6 pcs
(K)	Hange nut Ø5/16"		6 pcs
(I)	Wrench		1 pc
(J)	PH Screw M4 x 32mm		7 pcs
(M)	CBS Screw M4 x 20mm		4 pcs
(N)	CBS Screw M3.5 x 12mm		4 pcs
(O)	Shelf Pin		4 pcs
(P)	Tipping Restraint		1 Set

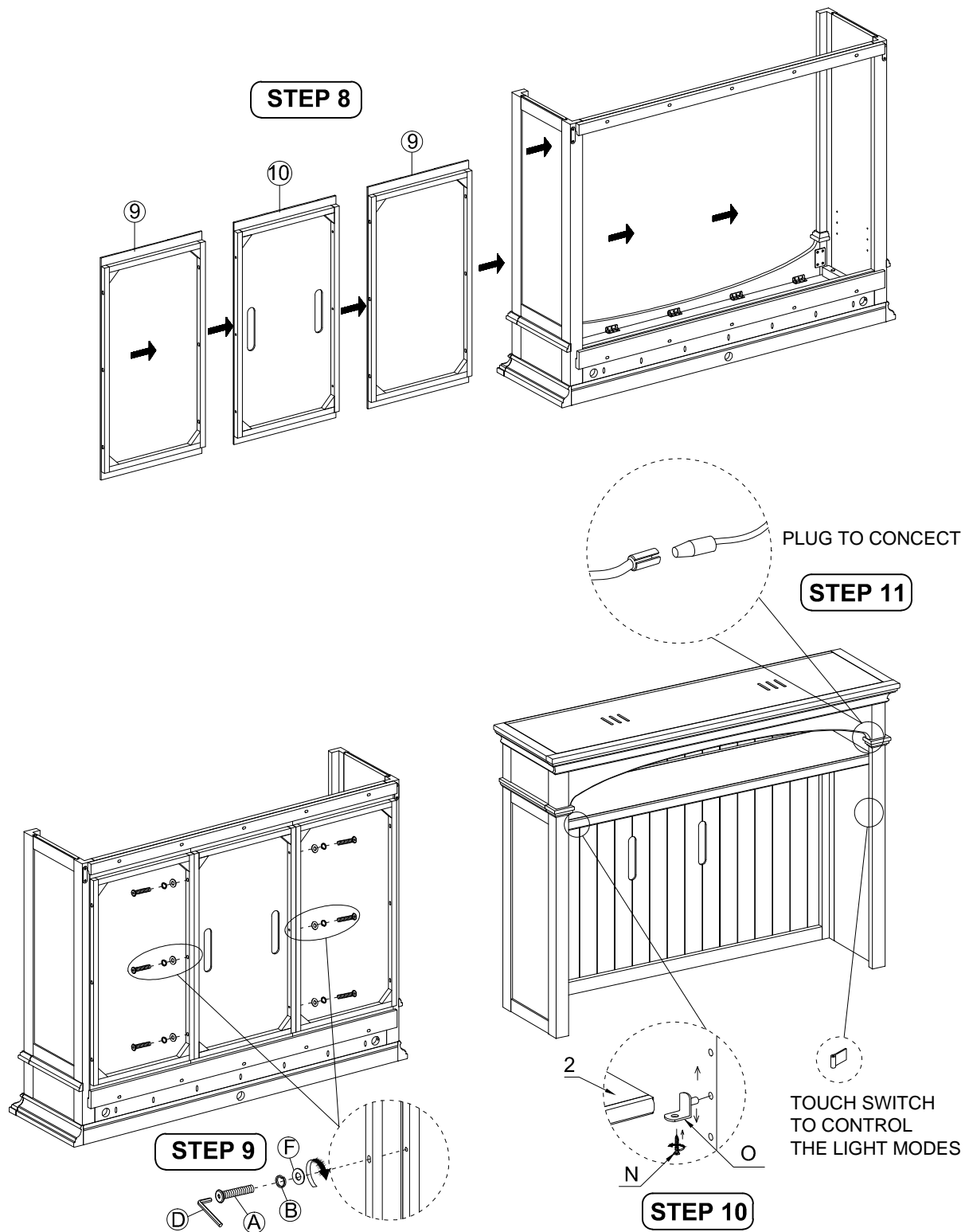
ASSEMBLY INSTRUCTION

DESCRIPTION : ENTERTAINMENT HUTCH
ENTERTAINMENT TV STAND
LEFT PIER
RIGHT PIER



ASSEMBLY INSTRUCTION

DESCRIPTION : ENTERTAINMENT HUTCH
ENTERTAINMENT TV STAND
LEFT PIER
RIGHT PIER



DESCRIPTION : ENTERTAINMENT HUTCH
ENTERTAINMENT TV STAND
LEFT PIER
RIGHT PIER

STEP 12

GLASS

REMOVE

LEFT PIER

HUTCH

RIGHT PIER

TV STAND

STEP 13

Power

WALL P

Screw

Adjustable Leveler

Screw

Screw