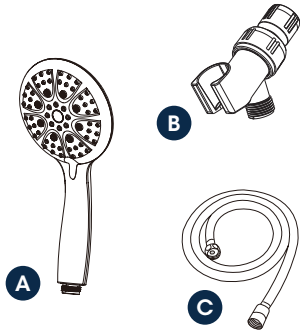


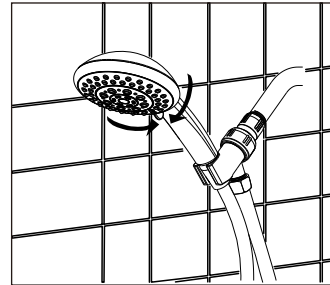
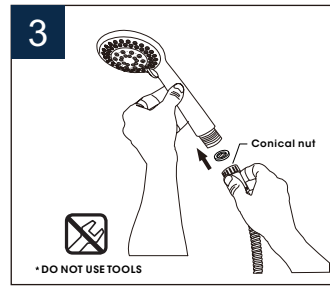
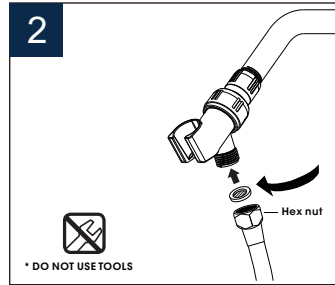
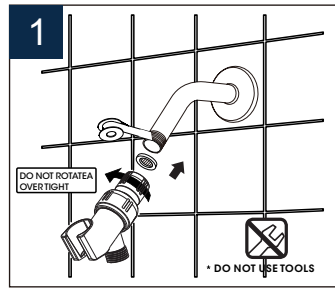
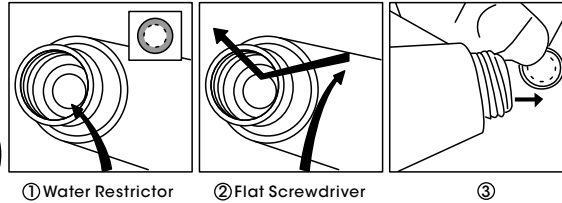
## PRODUCT DRAWING



No.	Description
A	Hand shower
B	Adjustable bracket
C	Flexible hose

## How To Remove Water Restrictor in Handheld Shower

Depending on the water pressure in your house, if you wish to have higher water pressure, you can remove the 2.5 GPM flow restrictor as needed. Use a flat screwdriver to take the restrictor out. (If you don't find a water restrictor, it means that the water restrictor has been removed as local pipe water pressure)



## HAND SHOWER SET

Installation instruction



\*No control valve\*  
MB/BN/BG/CH/ORB

### CARE INSTRUCTIONS

Rinse the product with clear water. Dry the product with a soft cloth.

### DO NOT:

Use abrasive cleansers, cloths, or paper towels. Use any cleaning agents containing acid, polish, wax, alcohol, ammonia, bleach, solvent or any other corrosive or harsh chemical cleansers.



Common After-Sales Questions

# HOW TO REINSTALL IF LEAKING

