

FIVE (5) YEAR LIMITED WARRANTY

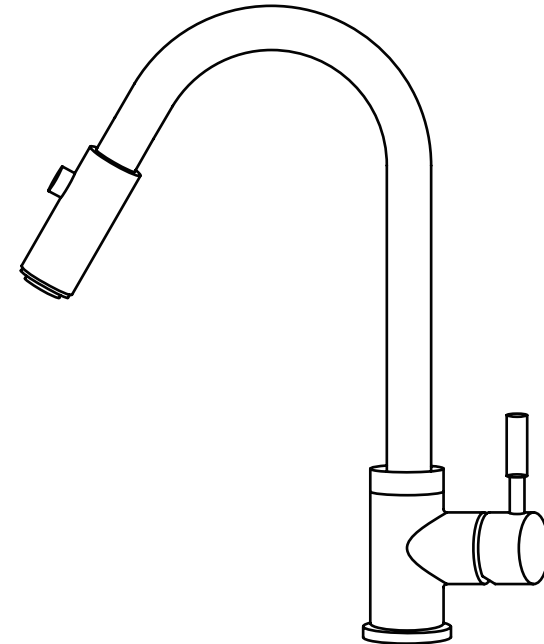
Our products have been manufactured under the highest the highest standards of quality and workmanship. We are warrants to the original consumers and hotel purchaser that should this ever develop a leak or drip during this 5 year warranty period, we will FREE OF CHARGE provide the parts necessary to put the product back in good working condition.

This warranty shall be effective from date of purchase as shown on purchase, s receipt.

This warranty is valid for the original consumers and hotel purchasers only and excludes industrial, commercial, or non-hotel business use of the product. Product damage due to installation error, product abuse, or product misuse, whether performed by a contractor, service company, or yourself. We will not be responsible for labor charges and/or damage incurred in installation, responsible or replacement, not for incidental or consequential damages.



PULL-DOWN SINK MIXER INSTALLATION AND OPERATION INSTRUCTIONS

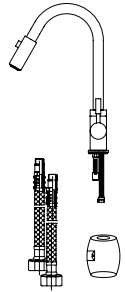


Please read this installation manual carefully before installation

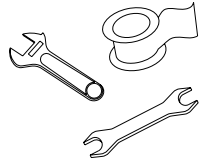
***This manual are only guide the installation steps, please refer to the actual product shall prevail ***

INSTALLATION INSTRUCTION

PULL-DOWN SINK MIXER

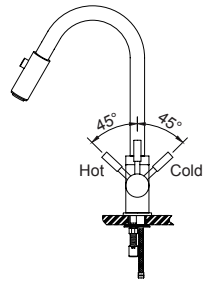
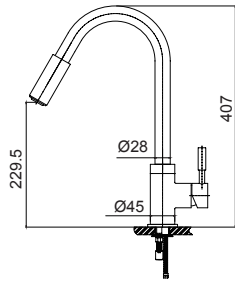


Standard Part List

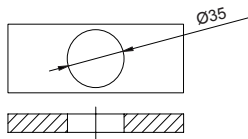


Tools You Will Need

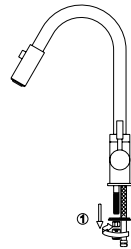
Product Dimension Diagram



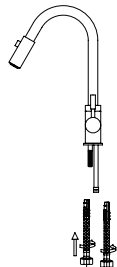
Faucet Installation Procedures



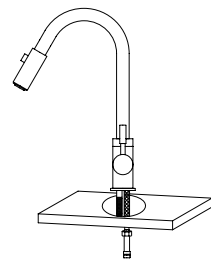
Step ①



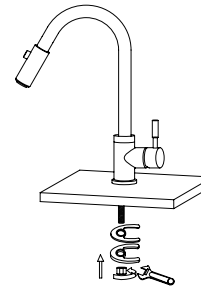
Step ②



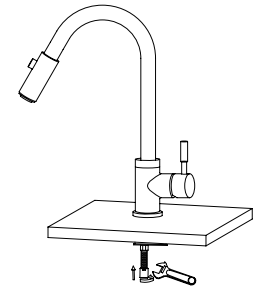
Step ③



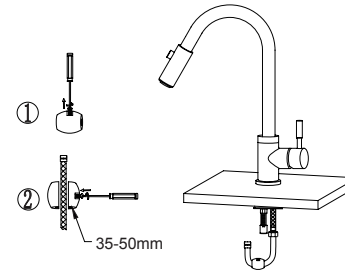
Step ④



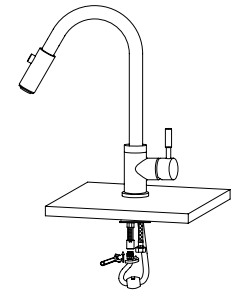
Step ⑤



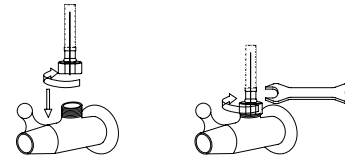
Step ⑥



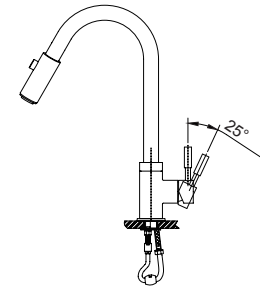
Step ⑨



Step ⑦



Step ⑧



Notice:

Please removing all of the sand,silt and other things from the water hose before assembling,to avoid blocking the faucet and effecting water rate. Please use the special tools to disassemble it and wash with pneumatic equipment,if the faucet blocked.