



## **INSTALLATION & CLEANING INSTRUCTION**

### **STAINLESS STEEL UNDERMOUNT SINK**

**Welcome to KBFmore World**

**Cabinet | Vanity | Sink | Faucet | Shower | Quartz**

**[KBFmore.com](http://KBFmore.com)**



---

4580 Roosevelt Rd. Hillside IL 60162| Phone: 312-226-5861

**KBFmore.com** | Email: order@KBFmore.com

## **INSTALLATION INSTRUCTIONS**

### **FOR STAINLESS STEEL UNDERMOUNT SINKS**

#### **Important Information**

**WARNING: Risk of personal injury. Stainless Steel Sink edges are sharp and can cause serious injuries. Use gloves and handle sink edges with caution.**

#### **NOTE:**

1. Due to the nature of undermount installation, Lenova recommends that Lenova Sinkware undermount sinks be installed by professional installers.
2. The templates are only a guide. Lenova strongly recommends the **physical presence of the sink** when counter top is cut.
3. For single bowl sinks mounted in multiple bowl configurations, a minimum distance of 2-1/4" (57 mm) is required between the bowls. Any additional required support should be determined by the countertop supplier.
4. For replacement installations, make sure the existing cutout is the same size or smaller than the cutout for the new sink.
5. The number of mounting clips included with your sinks may vary. Use all the clips provided with the sink.
6. Allow the silicone caulk to cure following the manufacturer's instructions

All information in this manual is based on the latest product information available at the time of publication. Lenova reserves the right to make revisions in the design of products without notice.

**Welcome to KBFmore World**

---

**Cabinet Vanity Sink Faucet Shower Quartz**



4580 Roosevelt Rd. Hillside IL 60162 | Phone: 312-226-5861

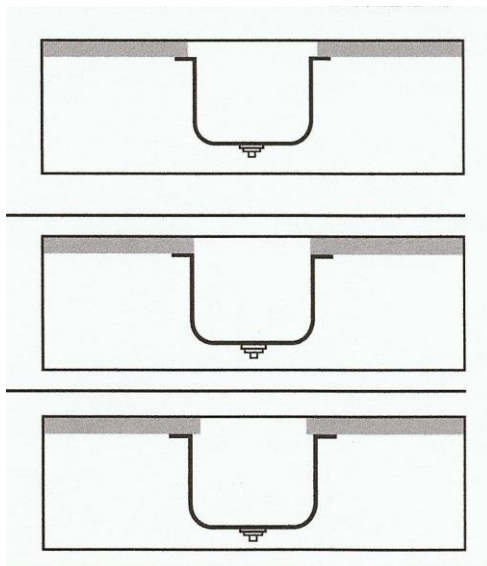
**KBFmore.com** | Email: [order@KBFmore.com](mailto:order@KBFmore.com)

### Undermount Installation

1. Lenova undermount sinks can be installed in three different ways in terms of the amount of reveal of the sink flange from the countertop cutout opening (see Undermount Reveal Options).

#### Undermount Sink Options

1. Positive Reveal: The countertop edge sits back 1/8" back from the edge of the sink, exposing the sink rim
2. Zero Reveal The countertop meets the edge of the sink fitting flush with the sink bowl
3. Negative reveal The countertop extends over the edge of the sink 1/8" on all sides. Use caution to make sure all accessories such as cutting boards will fit properly.



2. Verify cabinet clearance. Use Lenova recommended cabinet size. Position template at desired location on the countertop allowing necessary space for the sink to fit into the cabinet, and enough room on the countertop for clips, faucet, and soap dispenser, etc.

3. Choose the right fastener (not provided) for the countertop material. On the underside of the countertop, about 3/4" or closer depending on the space available from the edge of sink flange, mark spots for clip locations, at flange corners and every 6" to 7" apart around the sink flange. Secure the clips at the marked locations loosely.



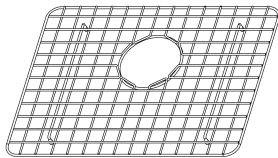
---

4580 Roosevelt Rd. Hillside IL 60162| Phone: 312-226-5861

**KBFmore.com** | Email: [order@KBFmore.com](mailto:order@KBFmore.com)

4. Clean the sink flange and countertop surface where the sink flange will be mounted with a solvent such as denatured alcohol. Dry thoroughly and apply a thin bead of clear silicone caulk around the top deck of sink flange.
5. Position and align sink over the countertop opening and press sink against countertop.
6. Adjust the position of sink if necessary. Make sure it is aligned to the cutout opening. Completely tighten all fasteners. Remove excess silicone caulk around the inside and outside edges of sink flange. After silicone cures, wipe inside edge with denatured alcohol. This will smooth out any rough areas.

### Recomend Sink Accessories



**Grid**



**Strainer**



**Cutting Board**



**Rolling Grid**



**Deep Colander**



**Shallow Colander**



**Faucet**



**Soap Dispenser**

---

**Welcome to Lenova Group World**

**Cabinet   Vanity   Sink   Faucet   Shower   Quartz**



---

4580 Roosevelt Rd. Hillside IL 60162 | Phone: 312-226-5861  
**KBFmore.com** | Email: [order@KBFmore.com](mailto:order@KBFmore.com)

## Cleaning Instruction

Thank you for the purchase of your Lenova luxury stainless steel sink: Lenova uses the highest quality type 304 stainless steel and quality workmanship in manufacturing sinks that will last a lifetime when properly cleaned.

Cleaning your Lenova sink:

- **Do Routine Cleaning**

Use soap, warm water and sponge. Rinse thoroughly and wipe dry.

- **To Remove Stubborn Stains**

BonAmi, BarKeeper's Friend or similar non- abrasive products are helpful in removing tough stains. Always rub in the direction of the grain, rinse thoroughly, and wipe dry. Do not ever use steel wool, scouring pads, steel brushes, etc. Their particles may become embedded in the sink surface and cause a rusty discoloration. **Do not use harsh alkali (i.e. oven cleaners) or acid detergents (i.e. acid grout cleaners for tile) in the sink.**

- **Water Spotting**

If water is left standing anywhere on your stainless steel sink, it will evaporate and leave a film (spots) on the surface of the steel. This film can be removed with regular dish soap and water and a soft cloth. For removing heavier residue, you may use a mild solution of vinegar and water. Be sure to rinse thoroughly and towel dry.

**Sink tip:** Regularly rinse and towel dry your sink after use to keep its surface exposed to oxygen. (Oxygen reacts with chromium in the steel to form a strong, highly protective chrome oxide film on the surface of your sink. It is this film that makes stainless resistant to corrosion and gives it a remarkably long life.)

- **Scratches**

Scratches are inevitable in any sink material, including stainless steel. Over time, these scratches will become uniform with the sink's grain. Lenova recommends the purchase of a customized sink grid to protect the bowl's bottom. Please contact your Lenova dealer or call Lenova at 1-877-733-1098

## Welcome to KBFmore World

---

**Cabinet   Vanity   Sink   Faucet   Shower   Quartz**