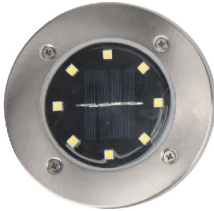


# PAMAPIC SOLAR PATH LIGHT

## PACKAGE INCLUDED



x8



x8



x8

## How to Works

During the day, the solar panel converts solar power into the rechargeable battery. At night, the light turns on automatically by the stored energy. How long the light lasts depends on its location, weather conditions and seasonal lighting availability.

## Choosing the Right Location

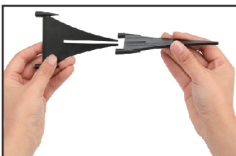
An outdoor location with direct sunshine each day is an ideal location for Solar Light. Shady locations will influence the batteries charge and may shorten the working time of the light at night time. The Solar light should not be placed near lighting such as street lights, which may cause the light to turn off as there is a sensor inside to feel brightness and control the light working. The Solar light is ideal for night time lighting of the garden, lawn, patio, walks or wherever needed. You can also charge the lights outdoors then use as indoor illumination. If the soil in your garden is quite solid, we recommended that you should make a hole on the ground before inserting the spike.

## Precautions

The light is designed to work when ambience turns to dark. If there are strong light sources nearby then the lamp might be very dim or not work at all. Although the battery has been charged by the manufacturer, the electric levels will have dropped when you receive it. Please charge it for a full day to optimize performance. The surface of the solar light must be kept clean, if not, this will influence the efficiency of charging.

## How to Use

1. There is an "on/off" switch at the top of the panel case. Push the switch to the "on" position.
  2. Put together two plastic spikes that fit in the bottom of the light.
  3. After you assembly them, make a hole on the ground, inserting the spike into the ground in a sunny location.
- Note: If the light does not turn on automatically after a 5 hour charge please check whether the lamp is placed in a sunny location or not.



## Disposal and Recycling of Batteries

To protect the environment, batteries must not be thrown in the domestic garbage, nor disposed of in a fire as they contain dangerous materials. Dispose of the batteries by taking them to your local waste collection service to be recycled.

## Warning:

This is not a toy. Keep away from children and pets.

Contact us:

- ✉ [Gigalumi@hotmail.com](mailto:Gigalumi@hotmail.com)
- Facebook: [@gigalumi.fans](https://www.facebook.com/gigalumi.fans)
- Twitter: [@Gigalumi\\_](https://twitter.com/Gigalumi)
- Instagram: [gigalumi\\_](https://www.instagram.com/gigalumi_)
- Pinterest: [Gigalumi](https://www.pinterest.com/Gigalumi)