

Side Cabinet

Assembly Instruction



THIS INSTRUCTION BOOKLET CONTAINS IMPORTANT SAFETY INFORMATION.
PLEASE READ AND KEEP FOR FUTURE REFERENCE.

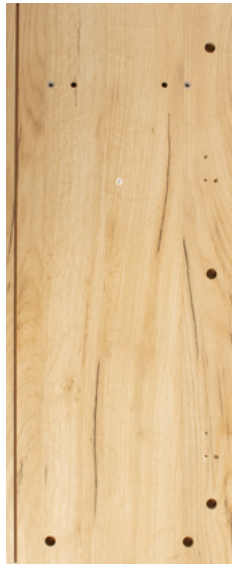
Parts list and Diagram



①
1PC (790*350)



②
1PC (652*325)



③
1PC (794*323)



④
1PC (795*325)



⑤
1PC (666*325)



⑥
1PC (650*60)



⑦
1PC (650*60)



⑧
1PC (795*60)



⑨
1PC (795*60)



⑩
1PC (601*370)

Parts list and Diagram



⑪

3PC (274*199)



⑫

3PC (215.5*120)



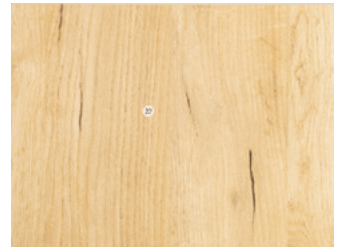
⑬

3PC (300*120)



⑭

3PC (300*120)



⑮

3PC (225.5*294)



⑯
















1PC (676*375)



⑰

1PC (676*279)

Parts list and Diagram

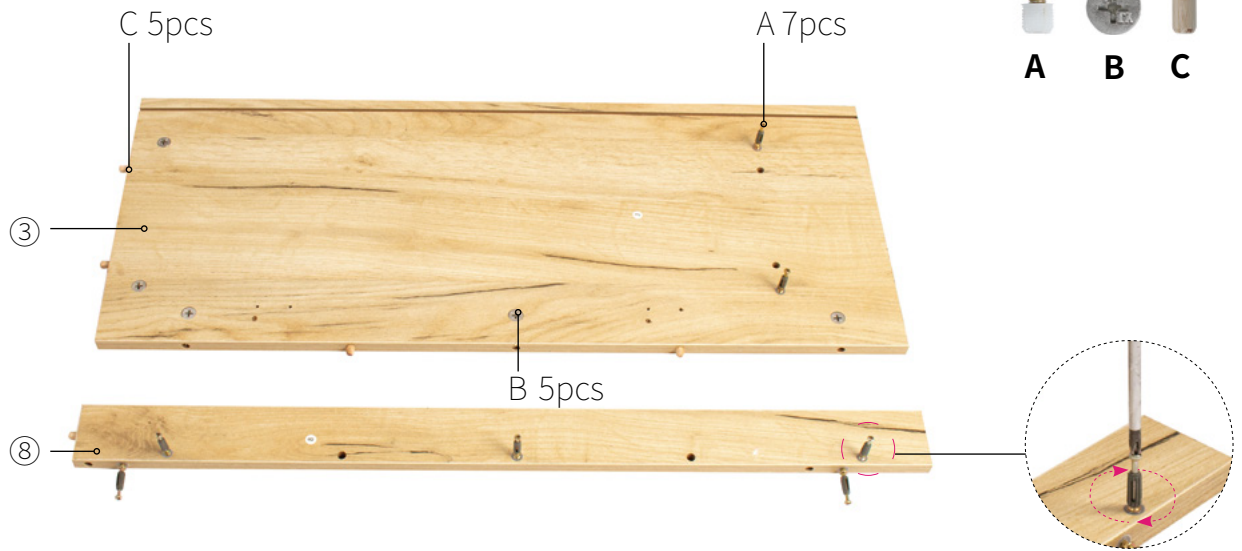
							
A 38PCS	B 38PCS	C 22PCS	D 3PCS(300mm)	E 3PCS(300mm)	F 3PCS(300mm)	G 3PCS(300mm)	H 42PCS(3.5*14)
							
I 12PCS (3.5*35)	J 3PCS (64mm)	K 1PCS	L 1PCS (4*20)	M 15PCS	N 15PCS(3*12)	O 2PCS	



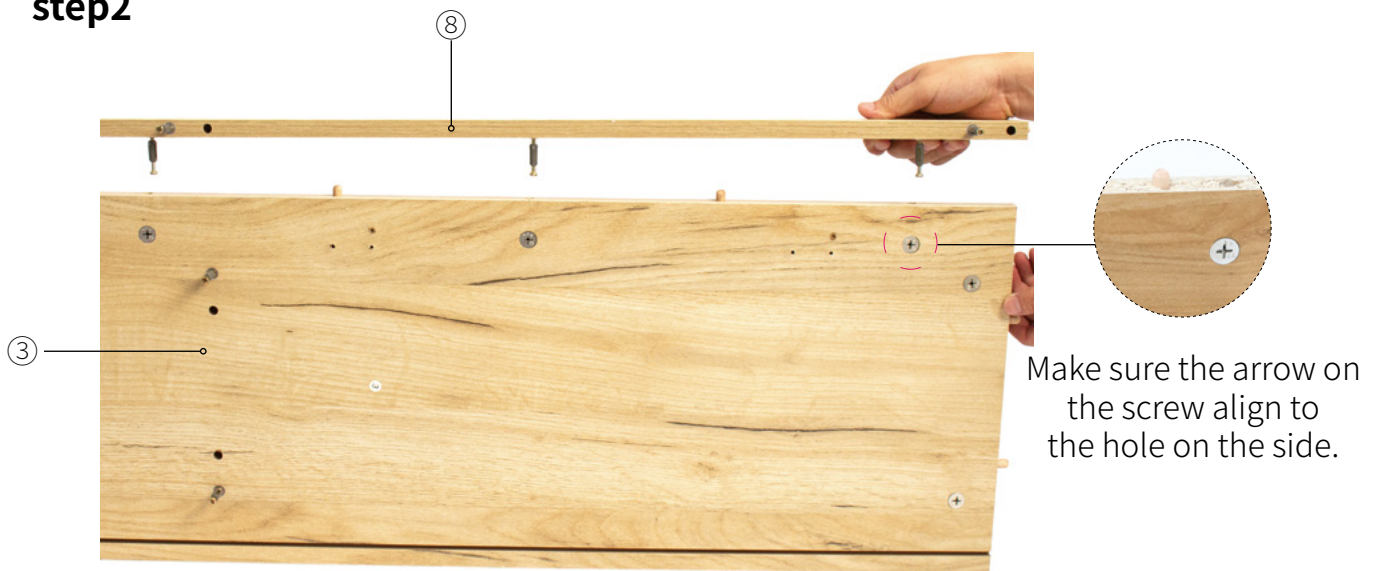
Scan QR code for assembly video

Assemble steps

step1

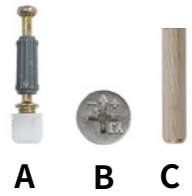


step2

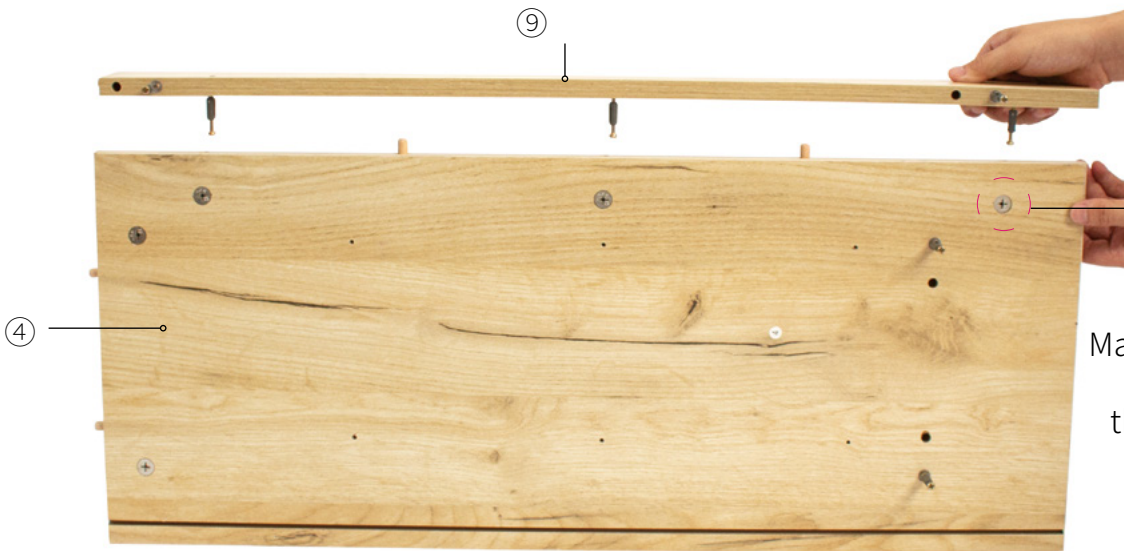


Assemble steps

step3



step4



Make sure the arrow on the screw align to the hole on the side.



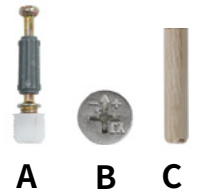
Assemble steps

step5

C 6pcs

A 4pcs

②



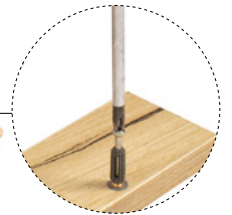
A

B

C

B
8pcs

⑦

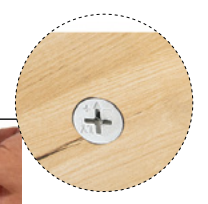


step6

⑦

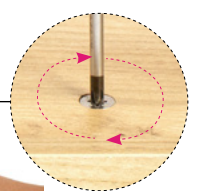


②



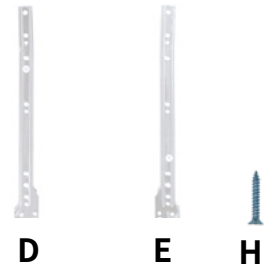
Make sure the arrow on the screw align to the hole on the side.

⑦

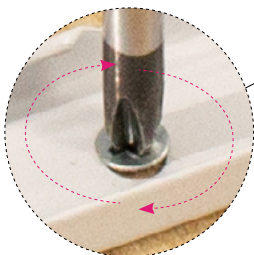
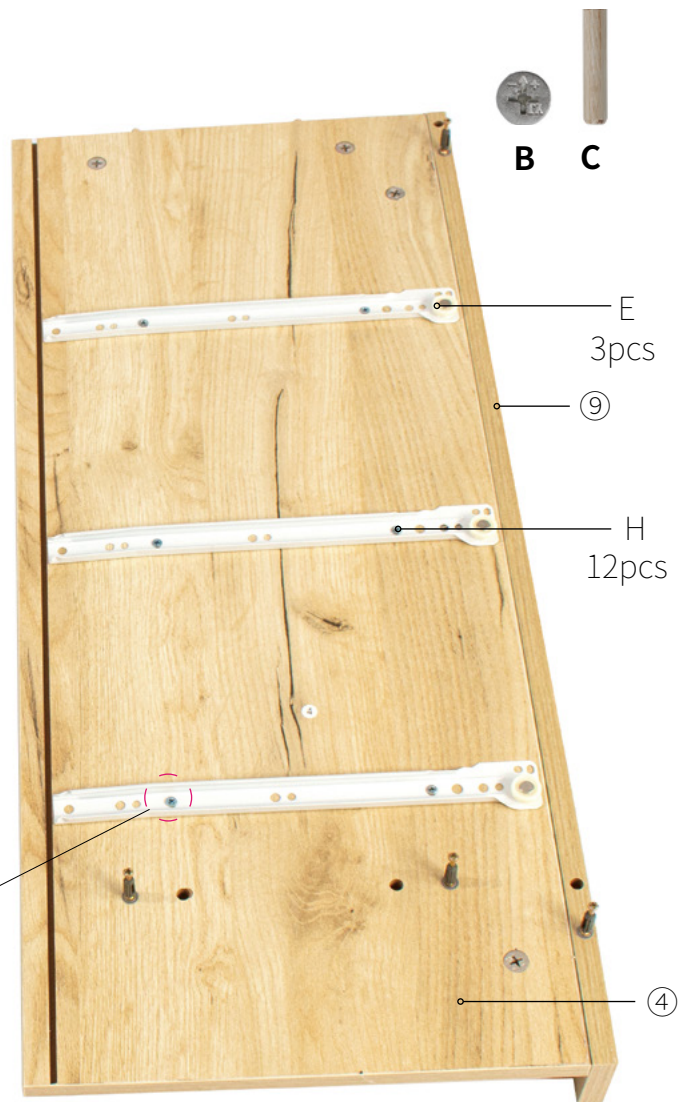


Assemble steps

step7



step8

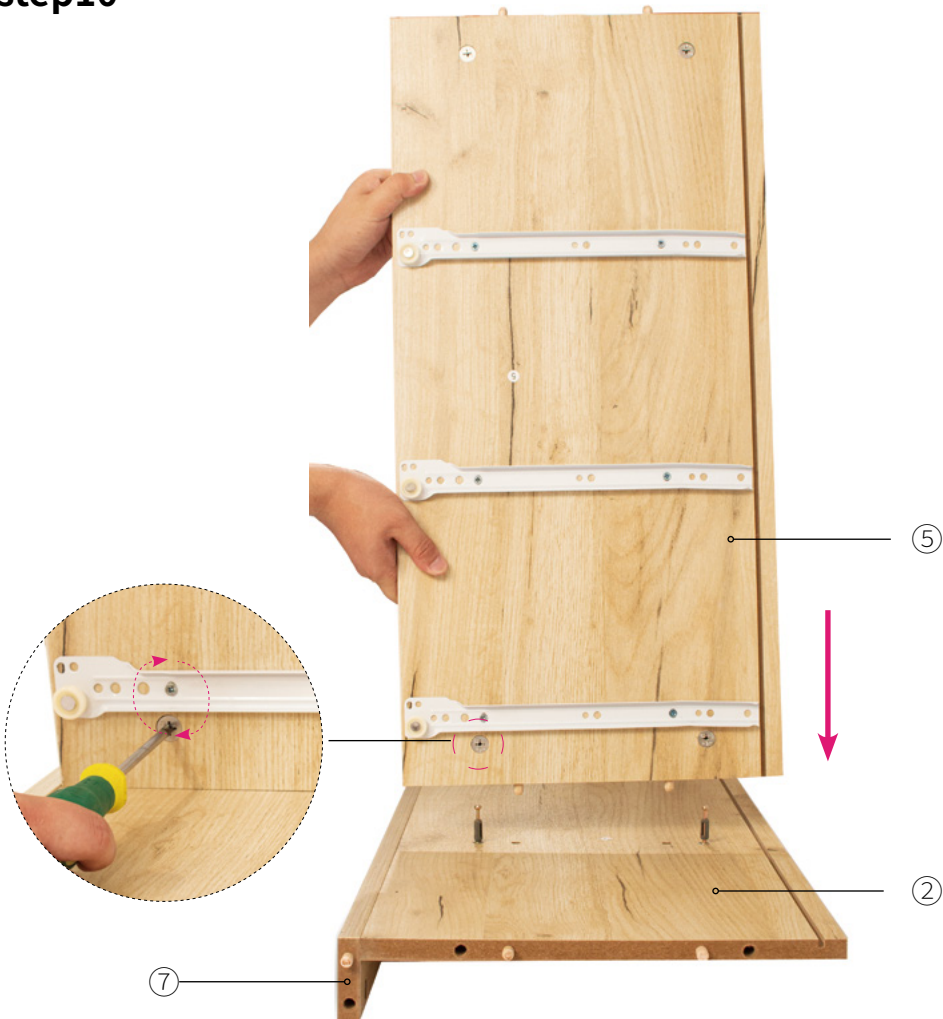


Assemble steps

step9

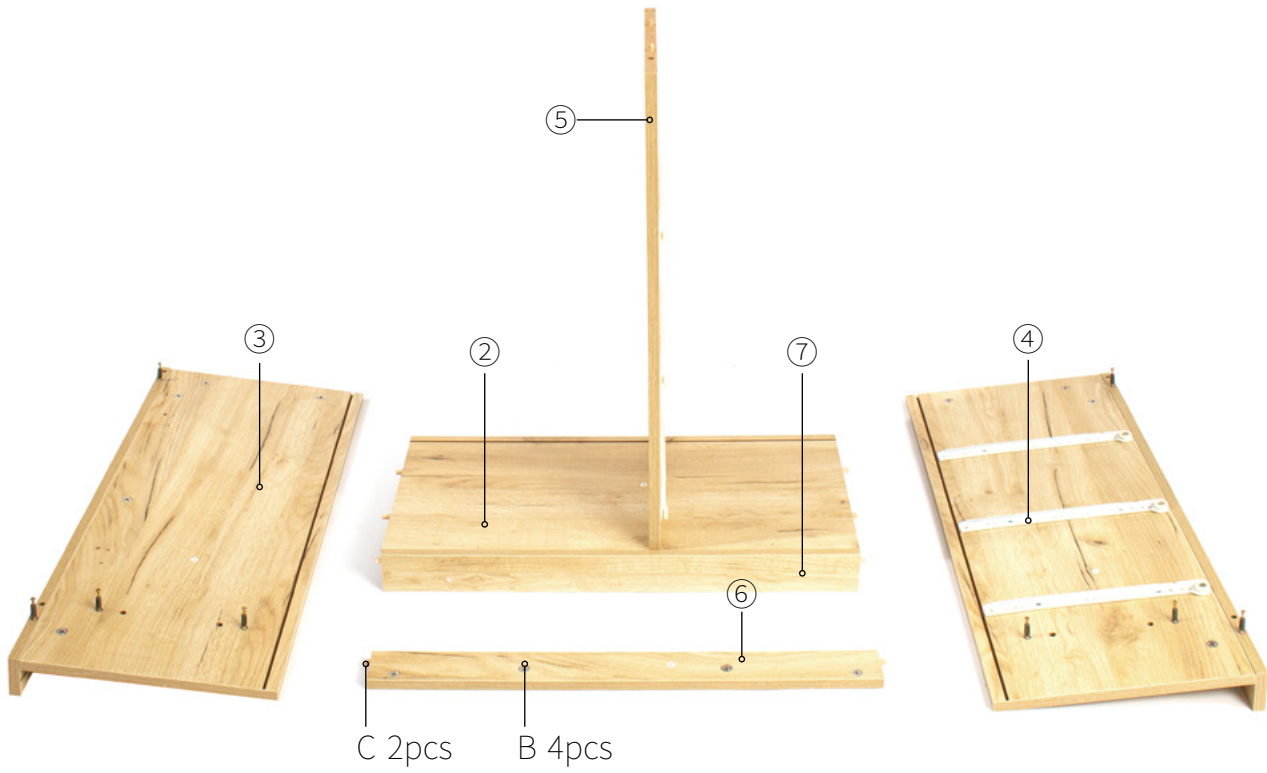


step10

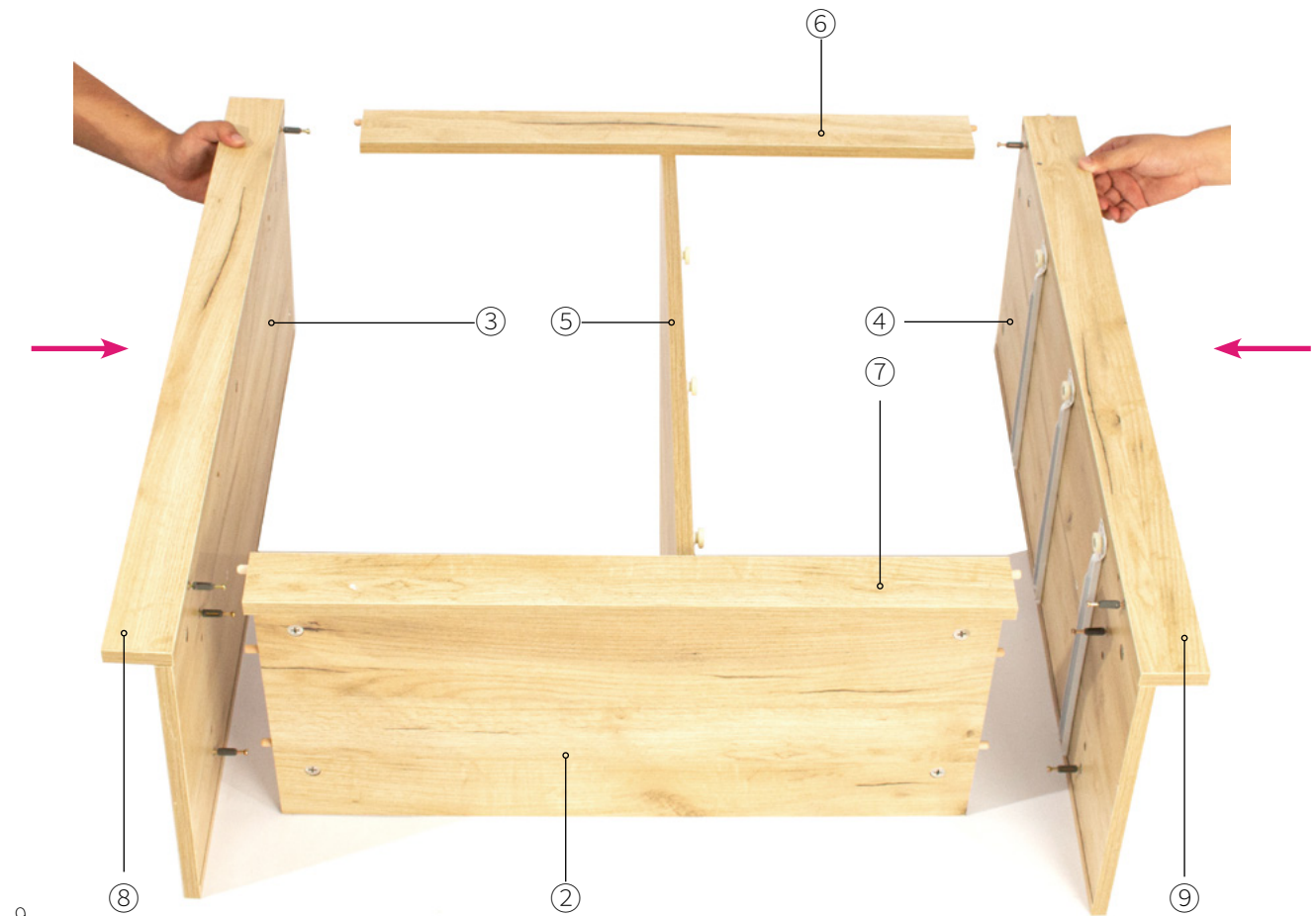


Assemble steps

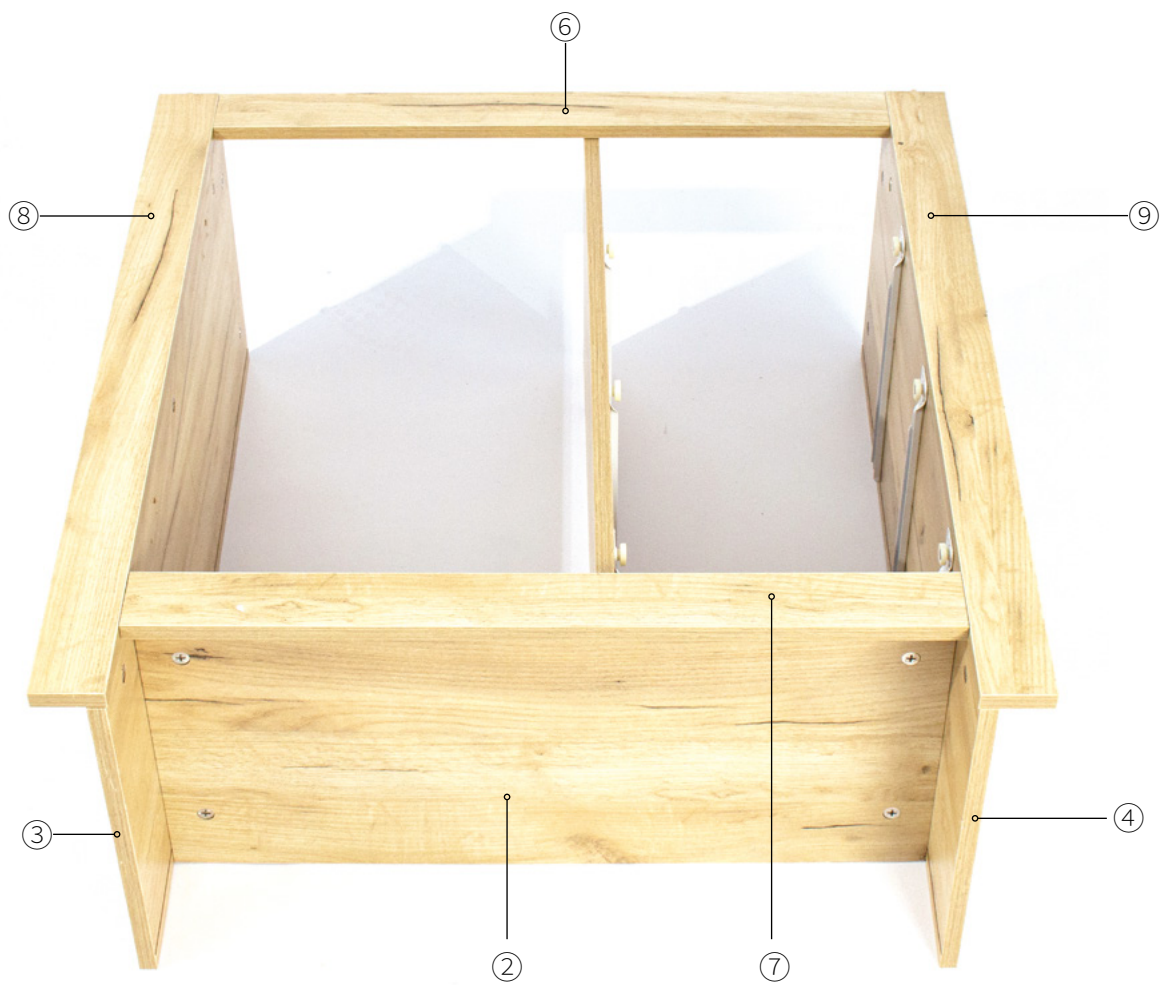
step11



step12



Assemble steps

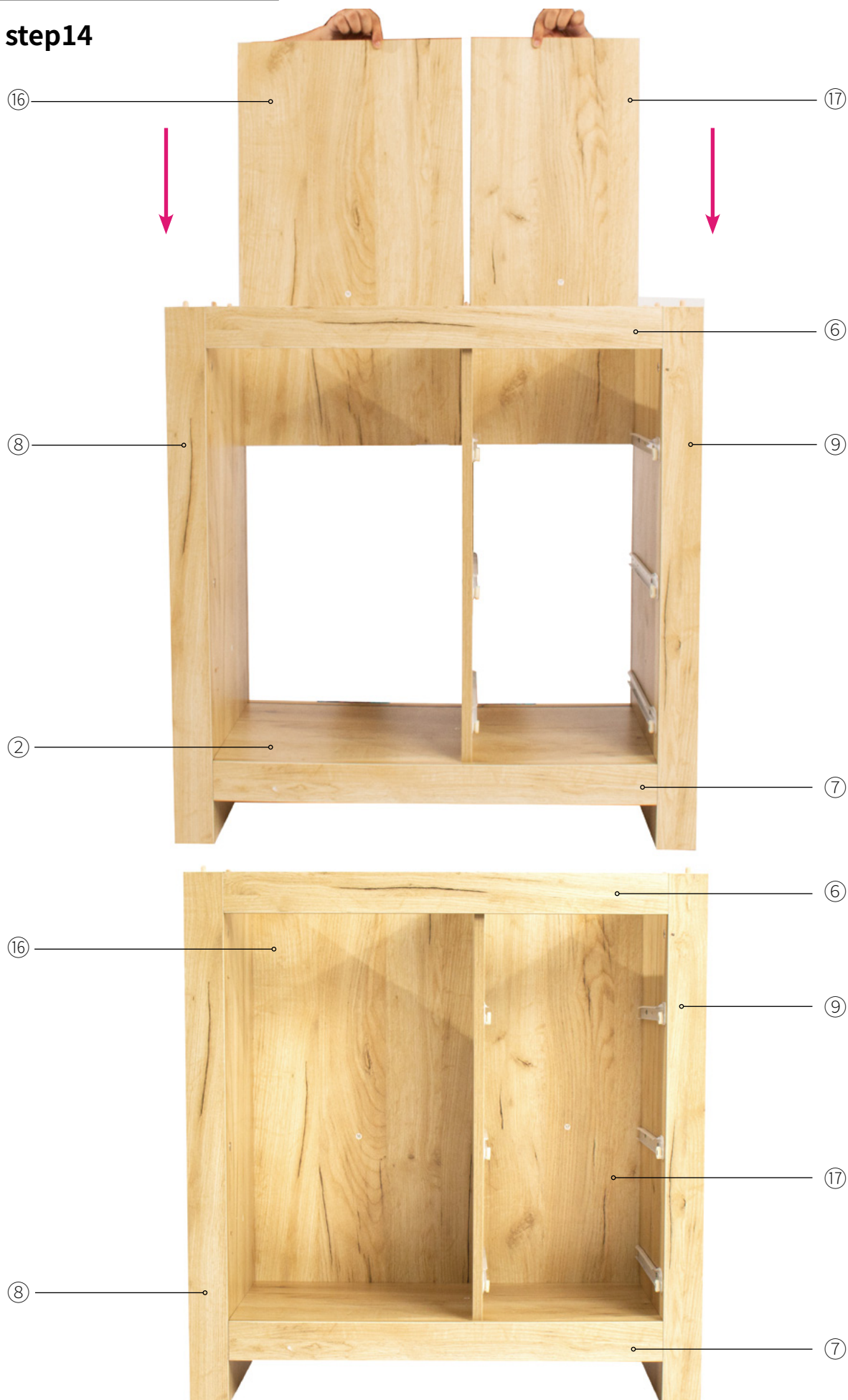


step13



Assemble steps

step14



Assemble steps

step15



A

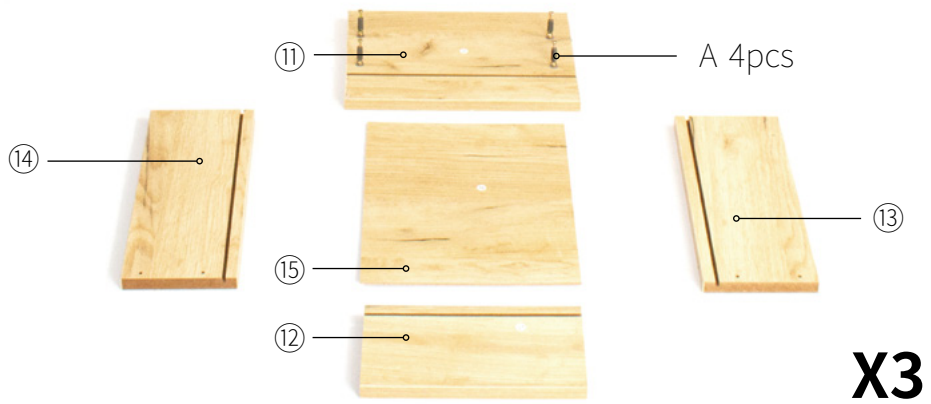


step16

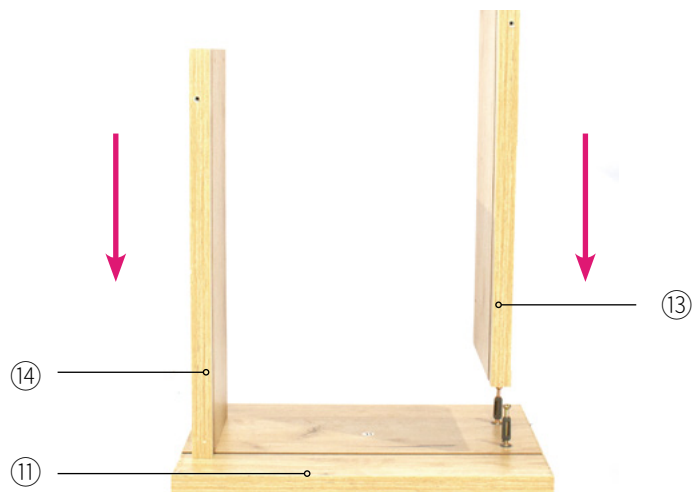


Assemble steps

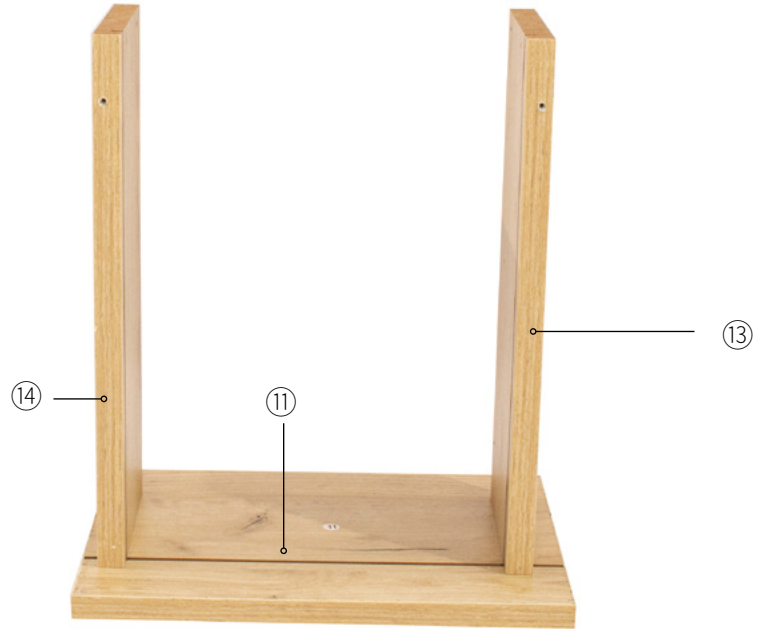
step17



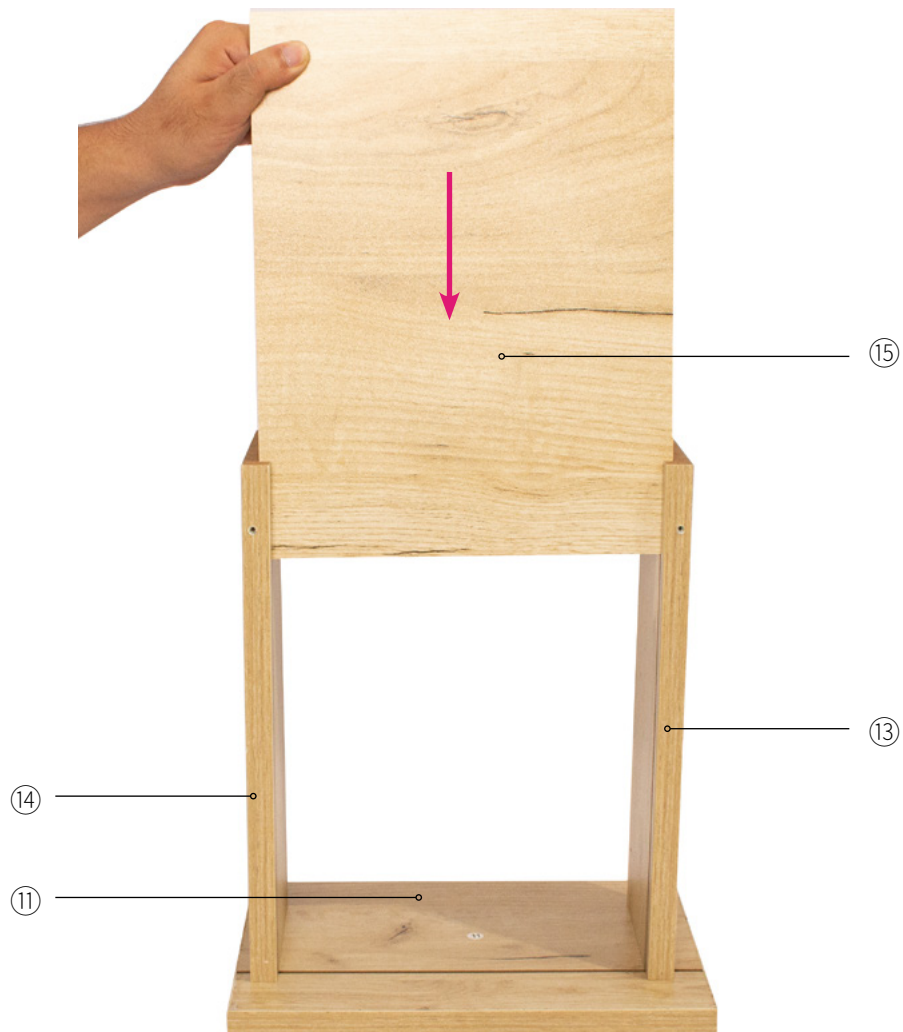
step18



Assemble steps



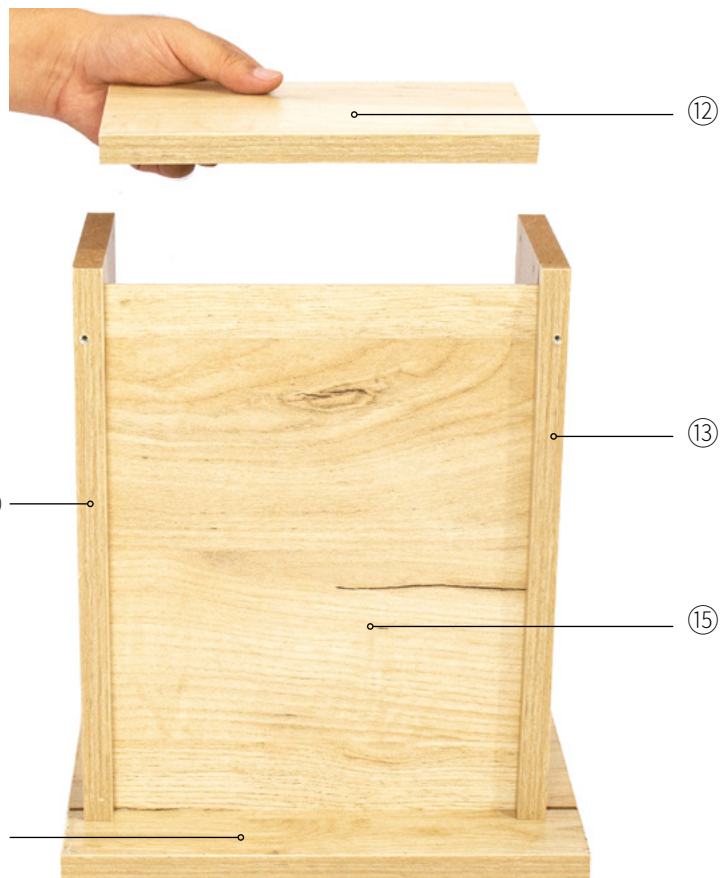
step19



Assemble steps

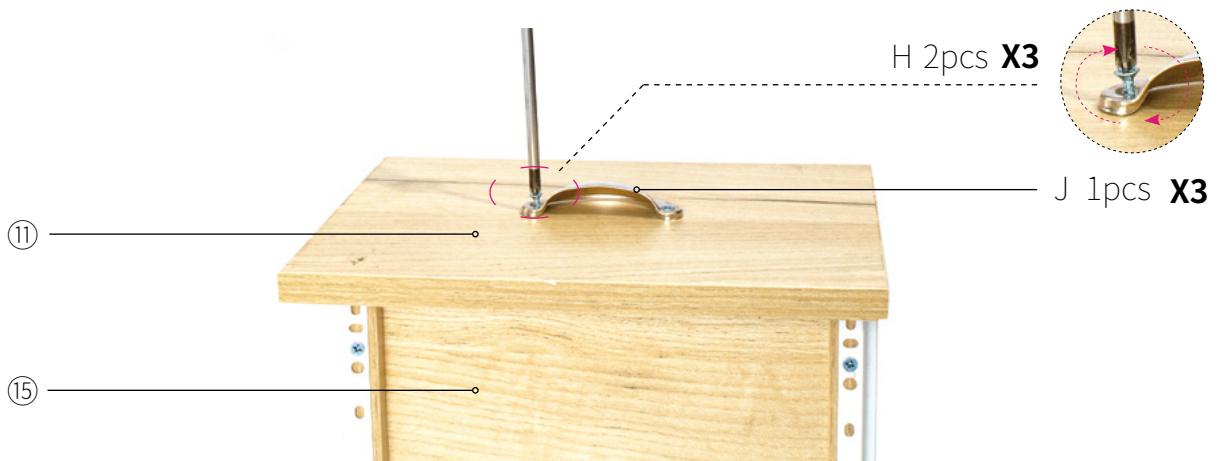
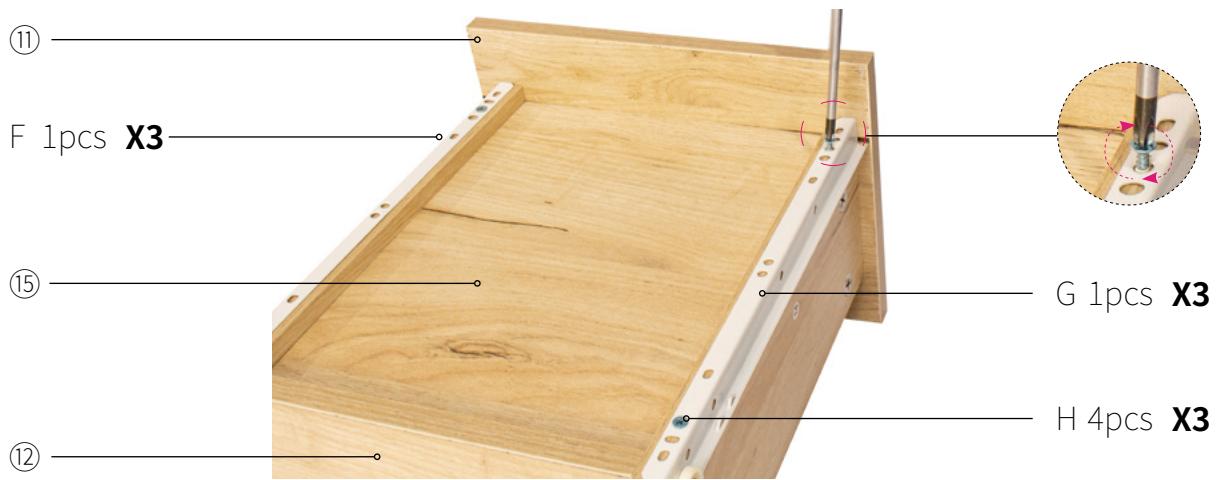
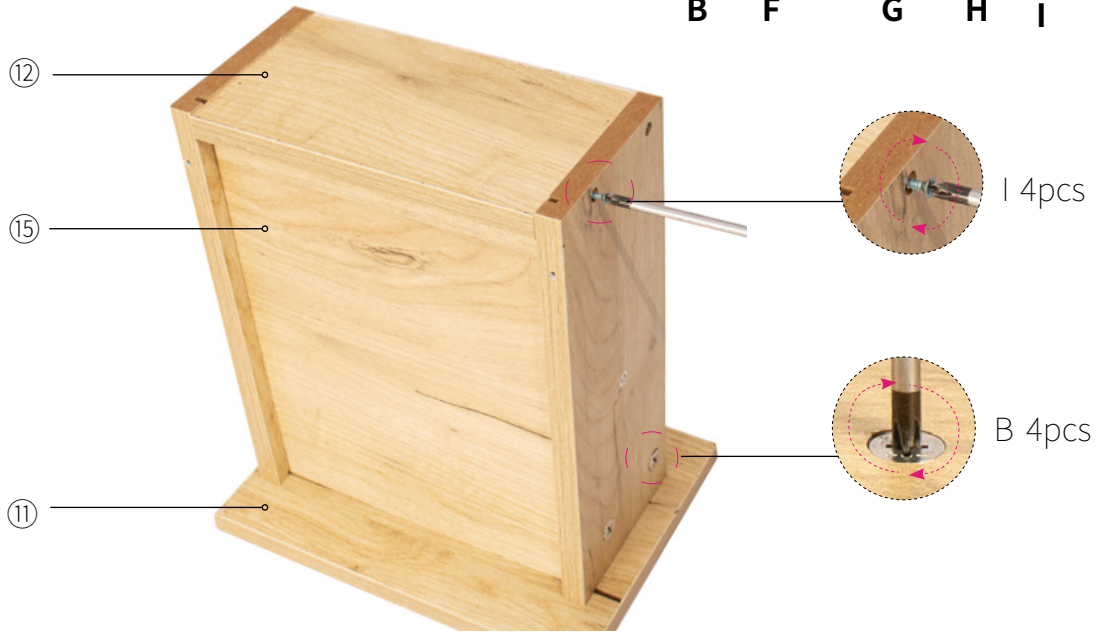
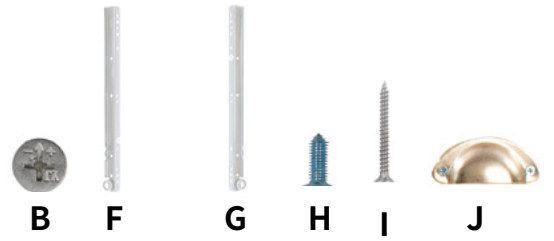


step20

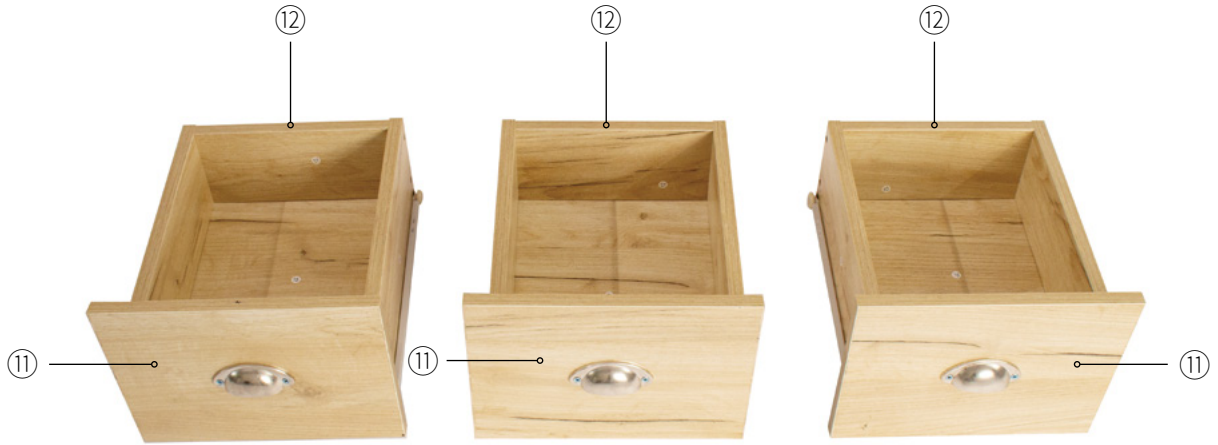


Assemble steps

step21



Assemble steps

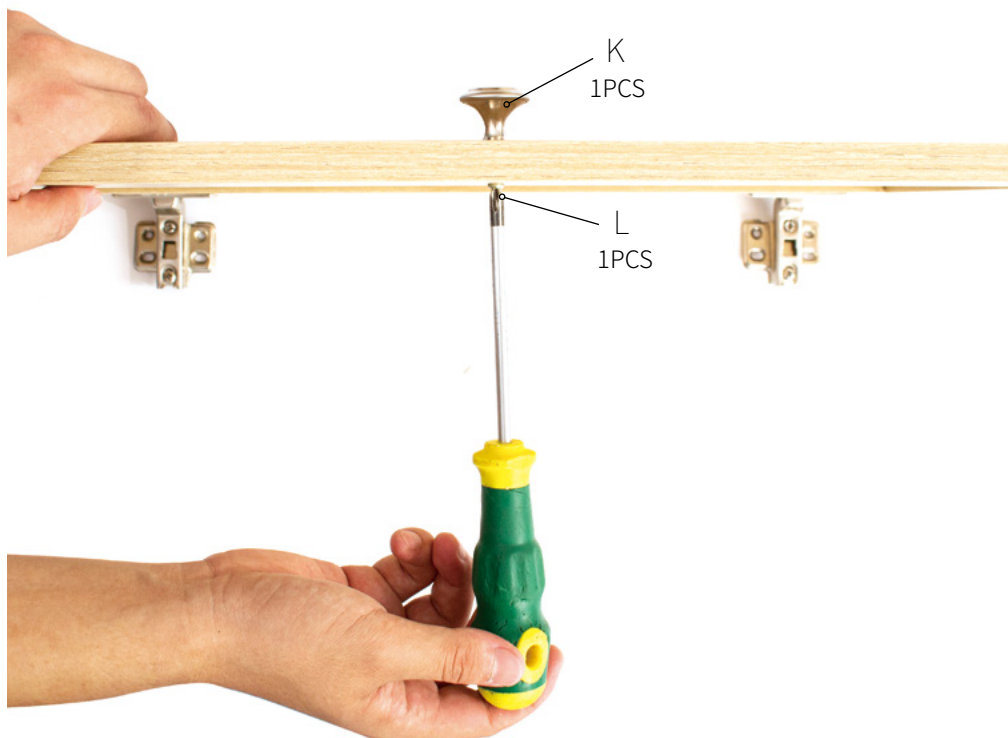
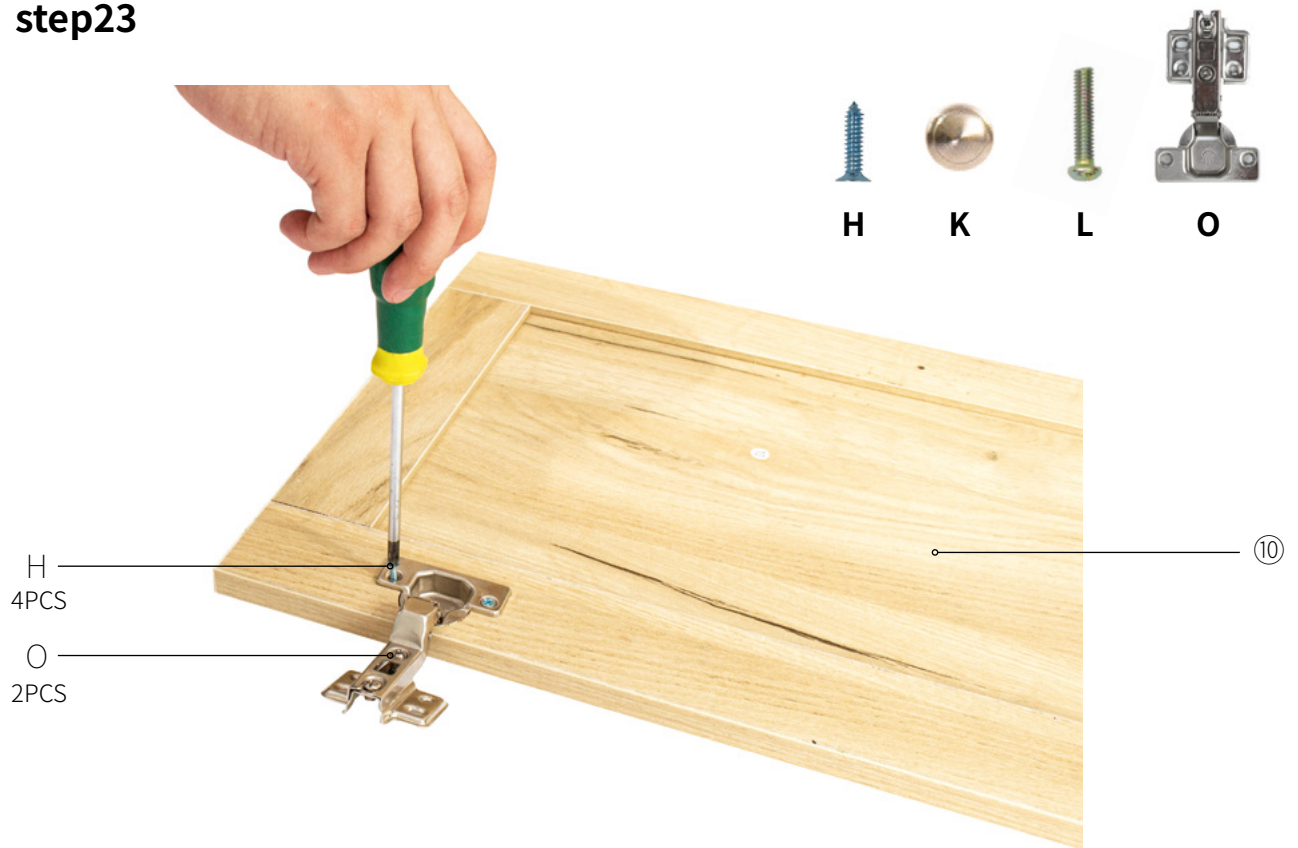


step22



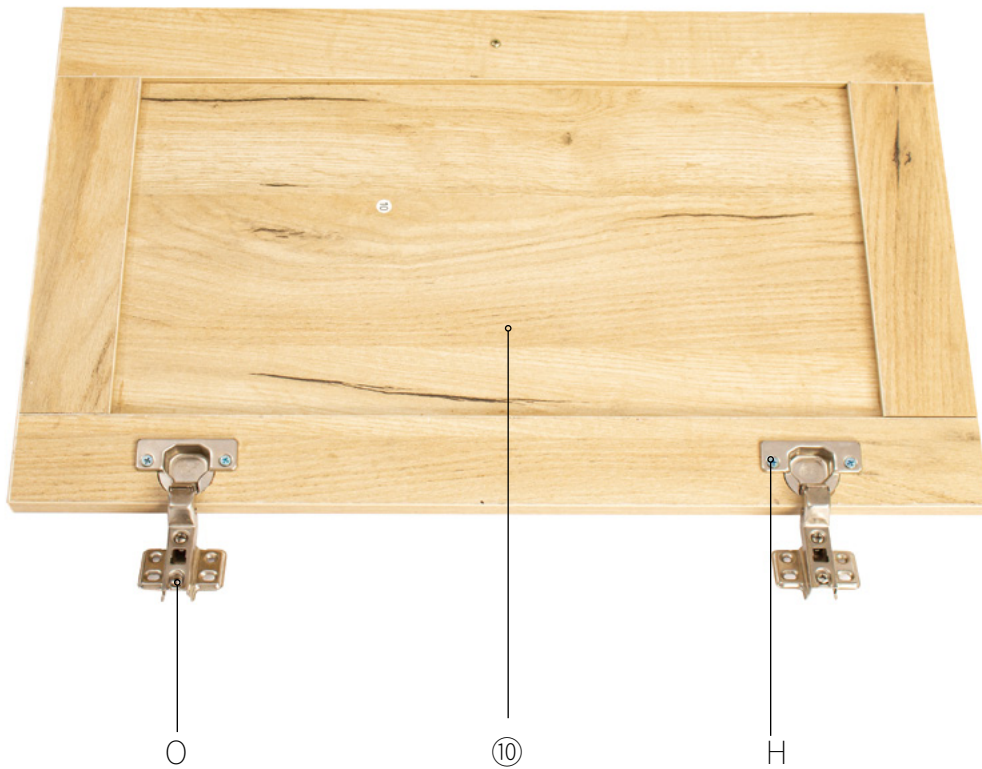
Assemble steps

step23



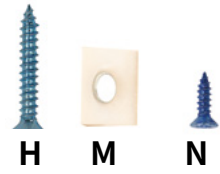
Assemble steps

step24

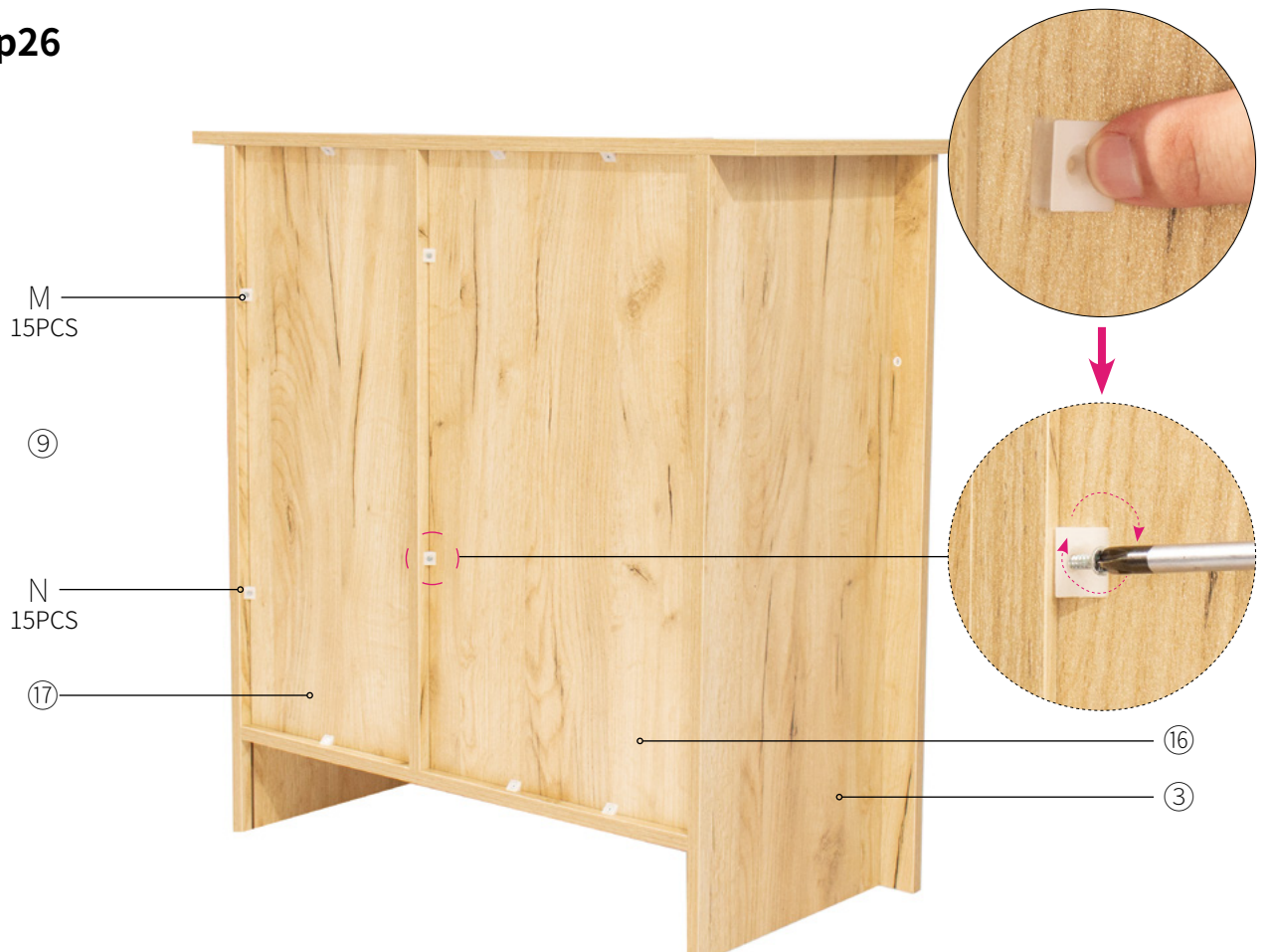


Assemble steps

step25



step26





-END-

