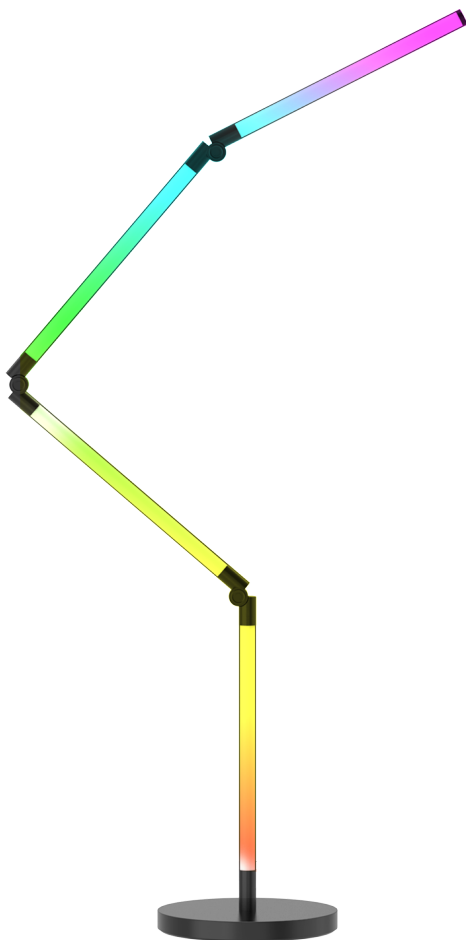


FOLDABLE FLOOR LAMP

INSTRUCTION MANUAL



V2 Version



Product features

This product uses WiFi + Bluetooth + 2.4G wireless transmission technology, low power consumption, strong anti-interference ability. WiFi + Bluetooth connect network can greatly enhance the connect network experience. When the router is disconnected, Bluetooth can also directly connect and control equipment at close range.

After successful network configuration using [Tuya Smart] app to achieve wireless dimming, remote control, group control, scene control, timing control, music movement, biorhythm, sleep plan, wake plan, one key execution, automation, etc. functions. And it supports 2.4G remote control.



16 Millions of colors to choose



Color temperature adjustable
2700K-6500K



Dim brightness / Saturation



2.4G RF wireless transmission technology



WiFi wireless control
support long-range control



Auto-transmitting & Synchronization
(only for remote control dimming)



Device sharing



Tap-to-Run & automation



Timing setting / countdown
turn on / off LED light



Remote control
Control distance 30m



Smartphone
app control



Support third
party voice control



Group contro



Biorhythm



Support music
rhythm



Sleep / wake up
plan



Support scene
customization



Do not disturb
mode



Tuya Smart APP



works with
amazon alexa



works with
Google Assistant

Operation Instructions

The steps of Wifi&Blut network configuration for foldable floor lamp are as follows:

- 1.1 Download the Tuya Smart App or Smart Life App from APP Store in Apple iPhone / APP market in Android mobile phone. Take the iPhone as an example, the following figure shows the app icon and the QR code for downloading the app.



- 1.2 Register and log in

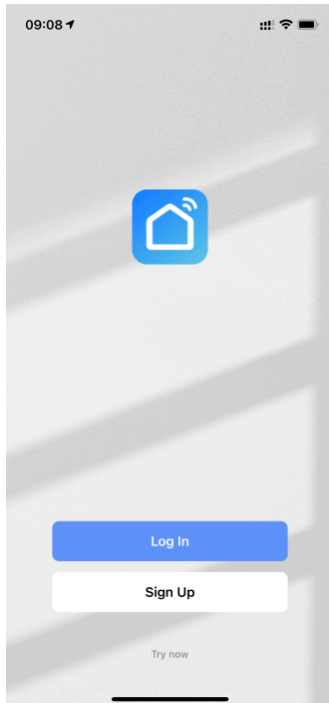


Figure 1.2

- 1.3 Ensure that the phone is connected to 2.4GHz WiFi network, and enable 4G mobile data, Bluetooth and GPS. When the device needs to connect to the app, long press the control button for 5 seconds. When the red light flashes, the user can open the app to access the network. If the device fails to access the network for 3 minutes, the device automatically enters the steady-on mode. If the device needs to access the network again, long press the control button for 5 seconds. When red light flashes, the network can be configured.
- 1.4 Automatically search for devices (recommended first). The APP home page interface will automatically pop up (Find the devices to be added). Click Add or click + icon on the upper right corner of the APP home page, to choose Add Device and enter the Add interface for selecting the device to be added.

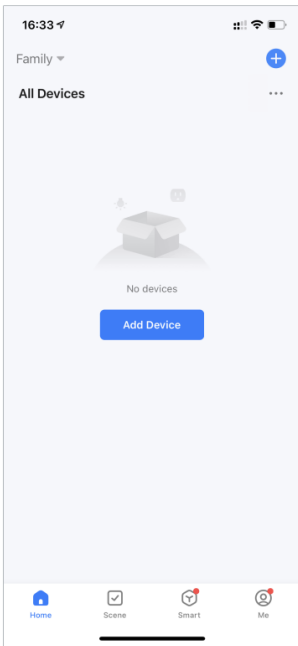


Figure 1.3

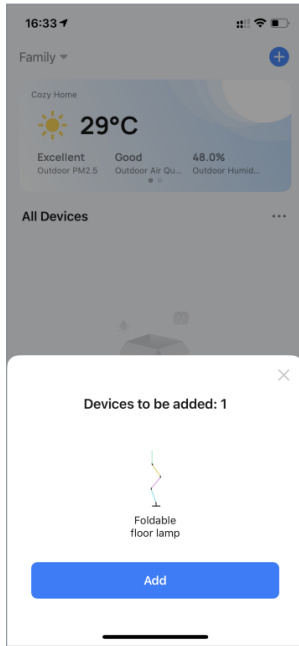


Figure 1.4

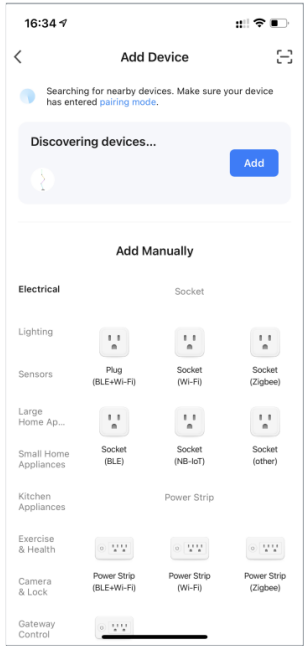


Figure 1.4.1

1.5 Select a network and click Next.

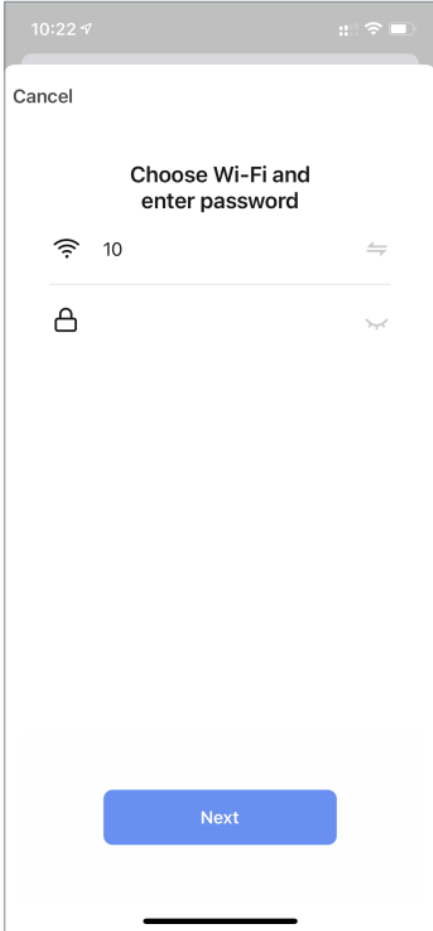


Figure 1.5

1.6 The device is now in the linking state. It means added successfully when appear “√” and the red light stops flashing.

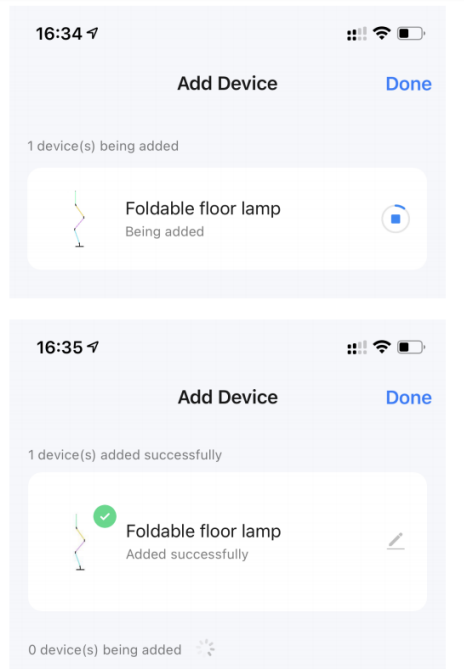


Figure 1.6

1.7 Manually add a device. The device must be in the connected state. Click Add in the upper right corner of the home page to select Add Device. On the Add Device page, choose Lighting-Light Source (BLE+Wi-Fi).

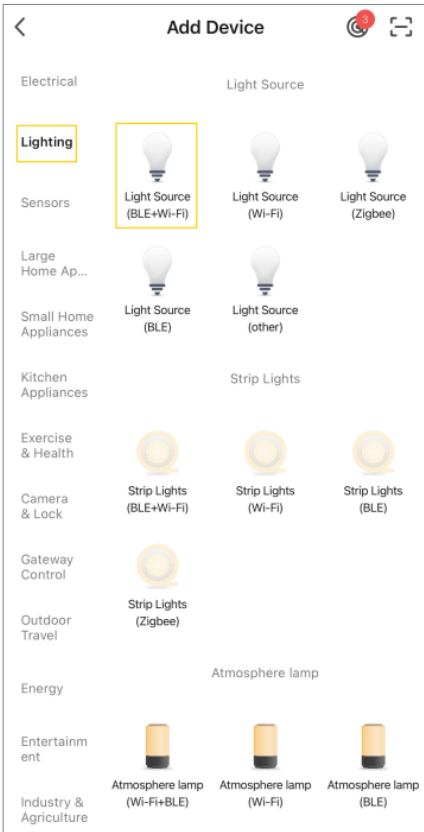


Figure 1.7

1.8 Continue to configure the network and confirm that the light flashes quickly or breathes.

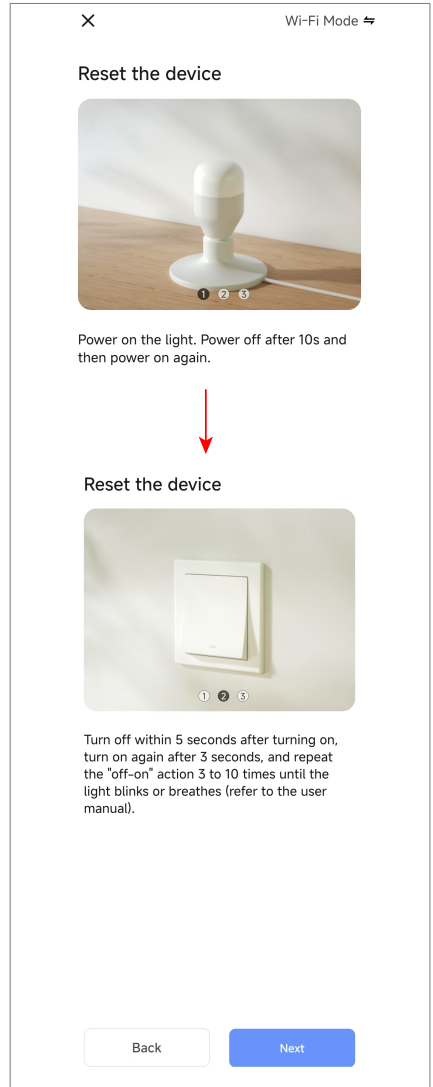


Figure 1.8

1.9 Continue to configure the network and confirm that the light flashes quickly or breathes.

1.10 Select 2.4 GHz Wi-Fi network and enter the password, and then click Next.

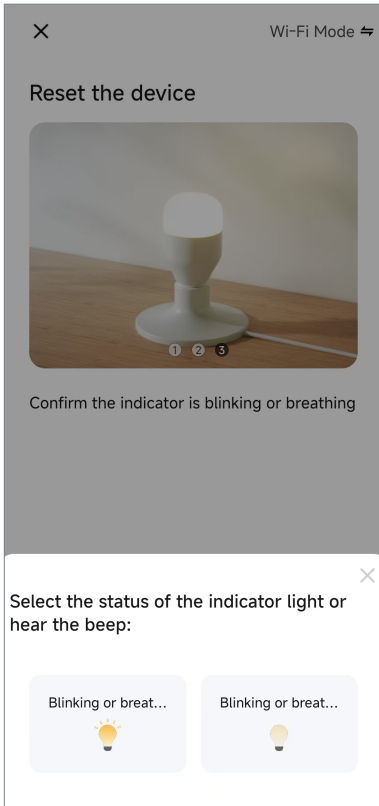


Figure 1.9

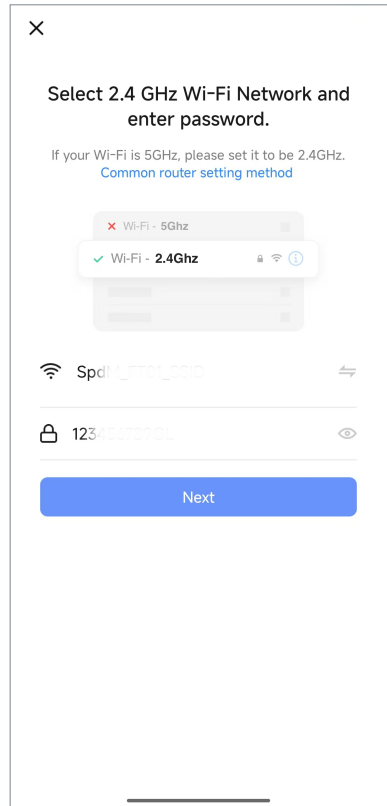


Figure 1.10

- 1.11 Connect the lamp to the WiFi by following these indications: when you see a checkmark (✓) symbol and the red light has stopped flashing, the lamp has successfully paired.

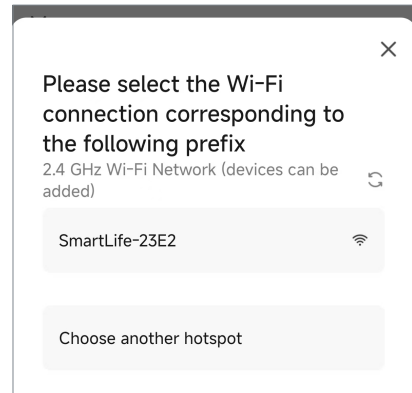


Figure 1.11

- 1.12 The light stops flashing when the device is added successfully. APP supports 2.4GHz Wi-Fi network/4G data network/ Bluetooth wireless control. When using Bluetooth control, the router needs to be disconnected for about 3 minutes to connect.

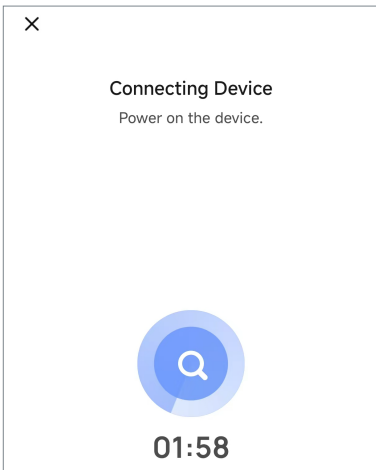


Figure 1.12

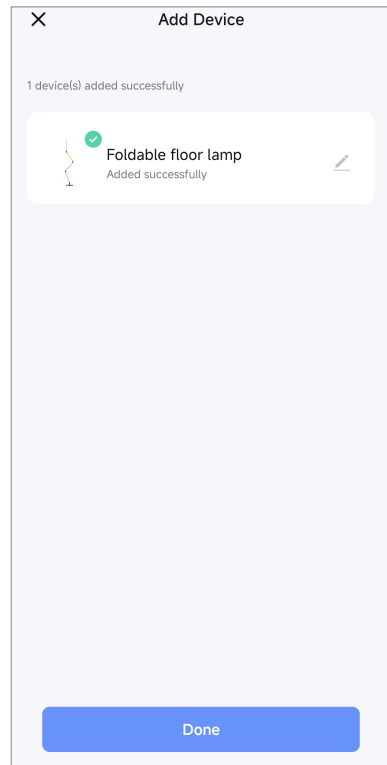


Figure 1.12.2

1.13 Color light interface.

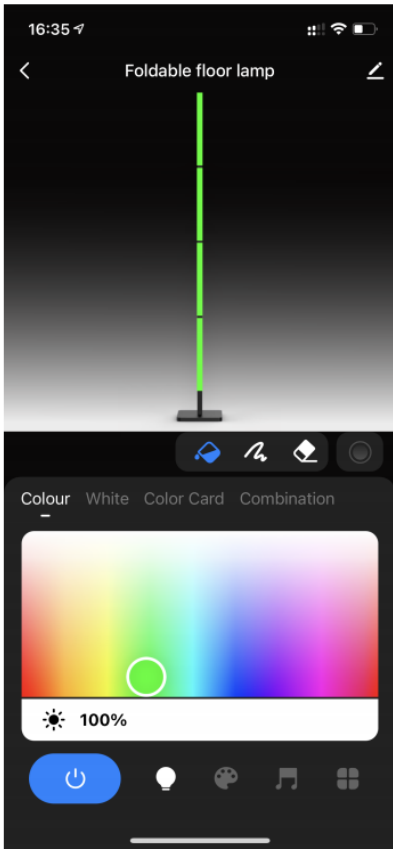


Figure 1.13

1.14 Cold and warm light interface.

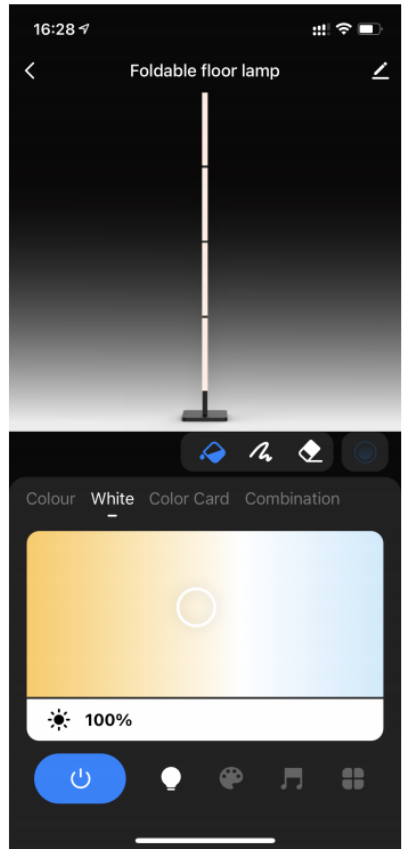


Figure 1.14

1.15 The color of the selected light segment can be selected or the selected light segment can be lit.

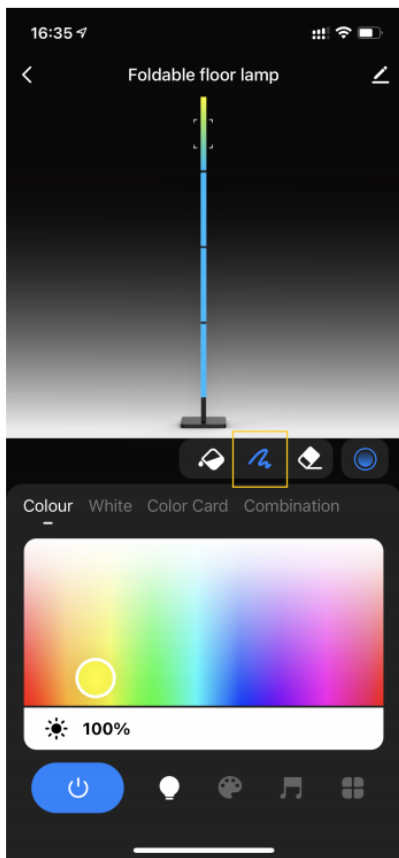


Figure 1.15

1.16 The selected light segment can be turned off.

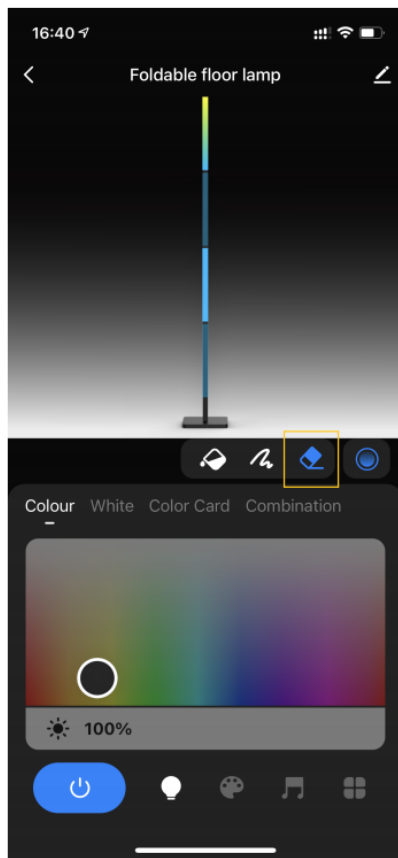


Figure 1.16

1.17 Scene mode.

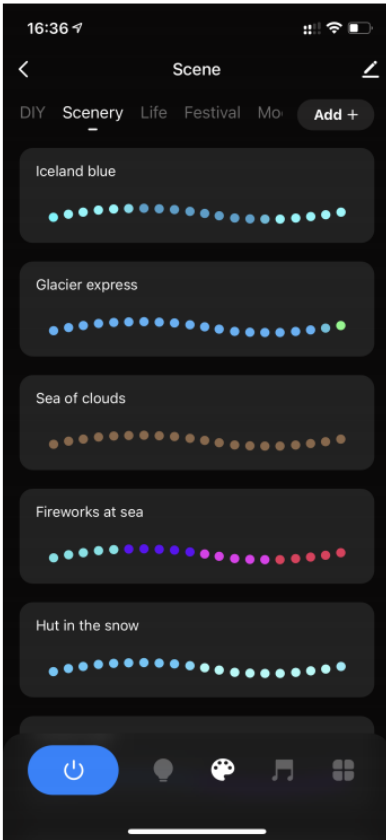


Figure 1.17

1.18 Click "Add+" in the upper right corner of the scene mode page to customize the scene DIY, and the custom scene DIY can be deleted by swiping left.

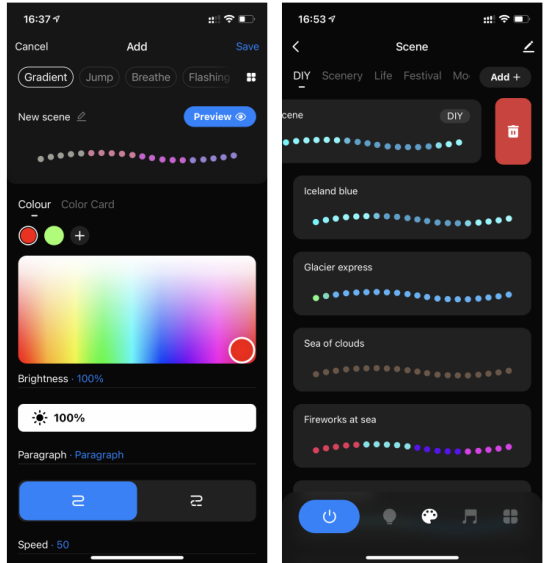


Figure 1.18

1.19 Local music mode.

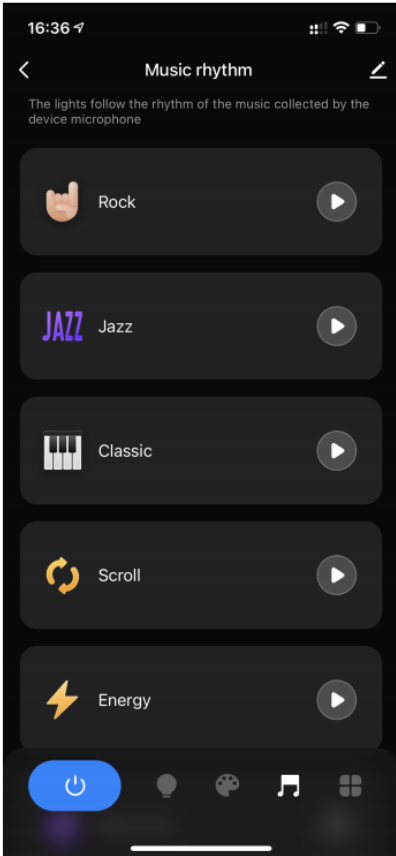


Figure 1.19

1.20 Alarm clock timing mode.

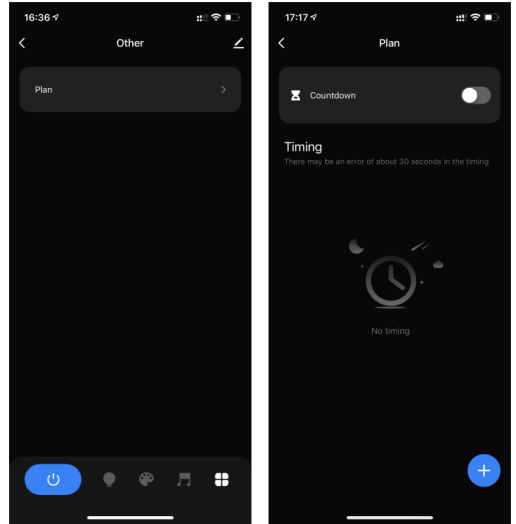


Figure 1.20

1.21 Check the third-party voice devices supported by the device by clicking the writing icon in the upper right corner.

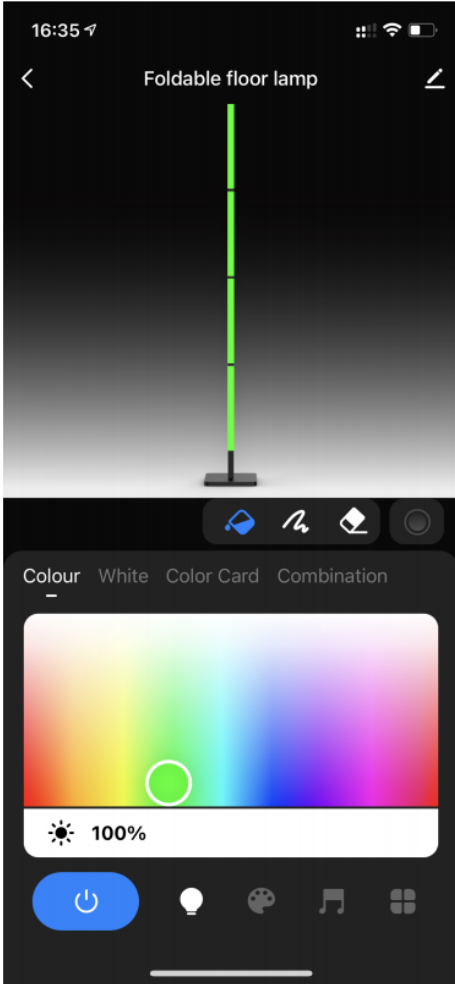


Figure 1.21

1.22 The device supports Alexa and Google Assistant.

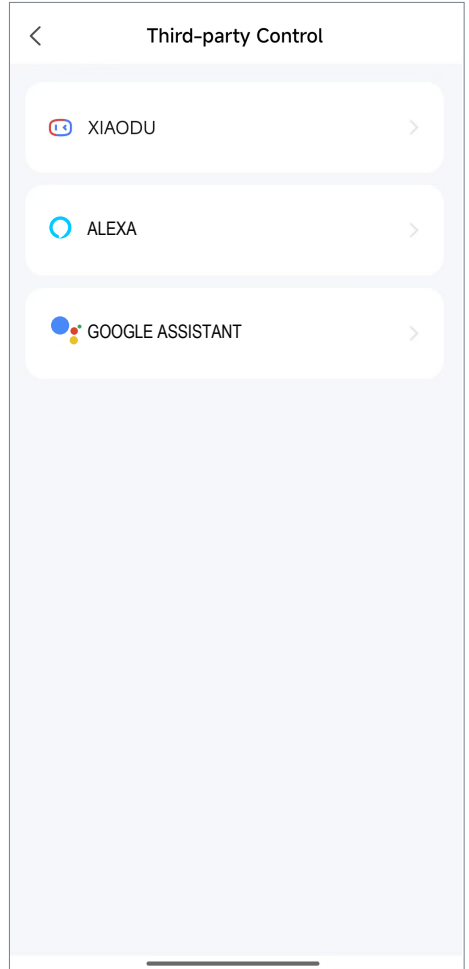


Figure 1.22

1.23 APP supports Share Device and Create Group functions.

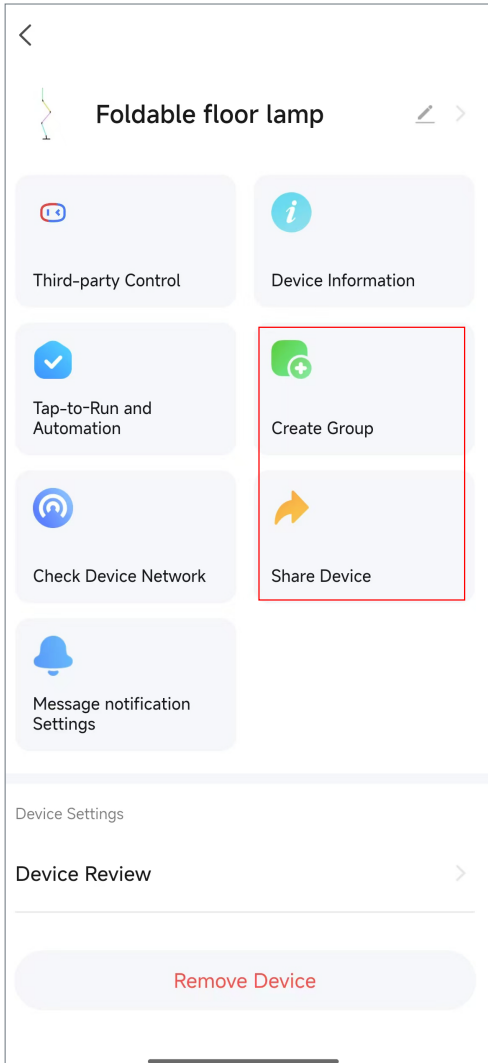


Figure 1.23

- 1.24 The app supports the following three methods to remove devices on the network:
Method 1: On the home page, long press the selected device, In the popup options, select "Remove Widget" to delete.

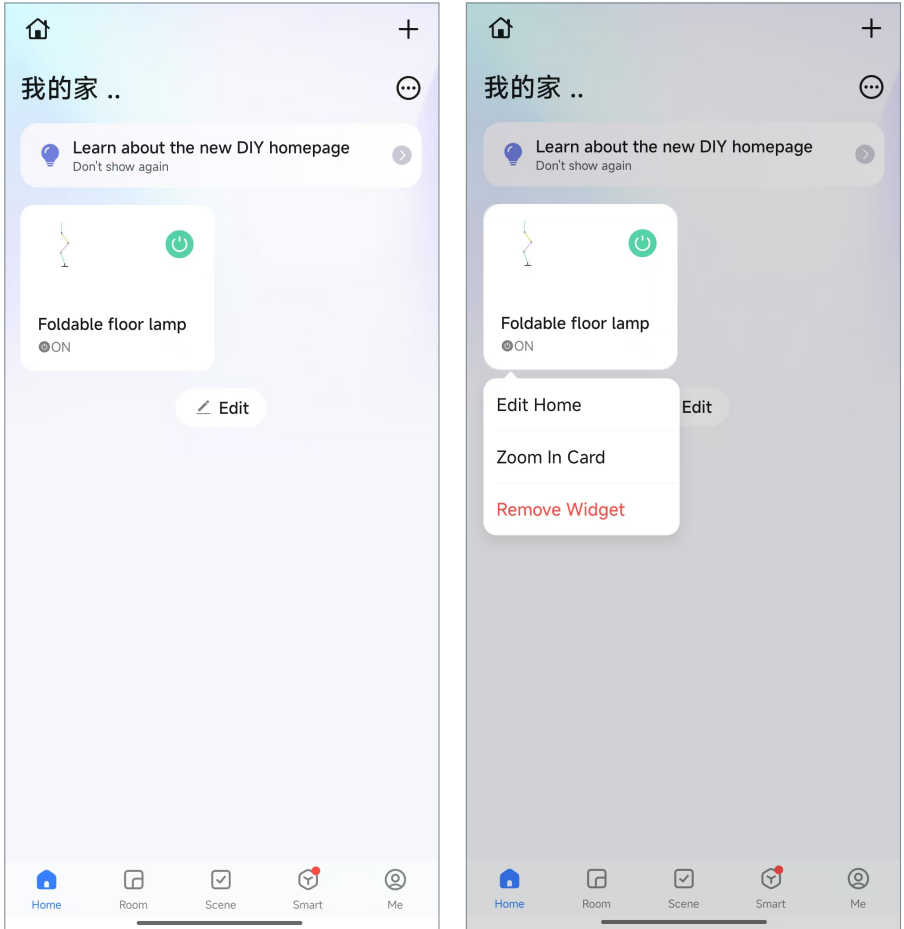


Figure 1.24

1.25 Method 2: Enter the interface of control device, click the writing icon, and click the underneath to remove.

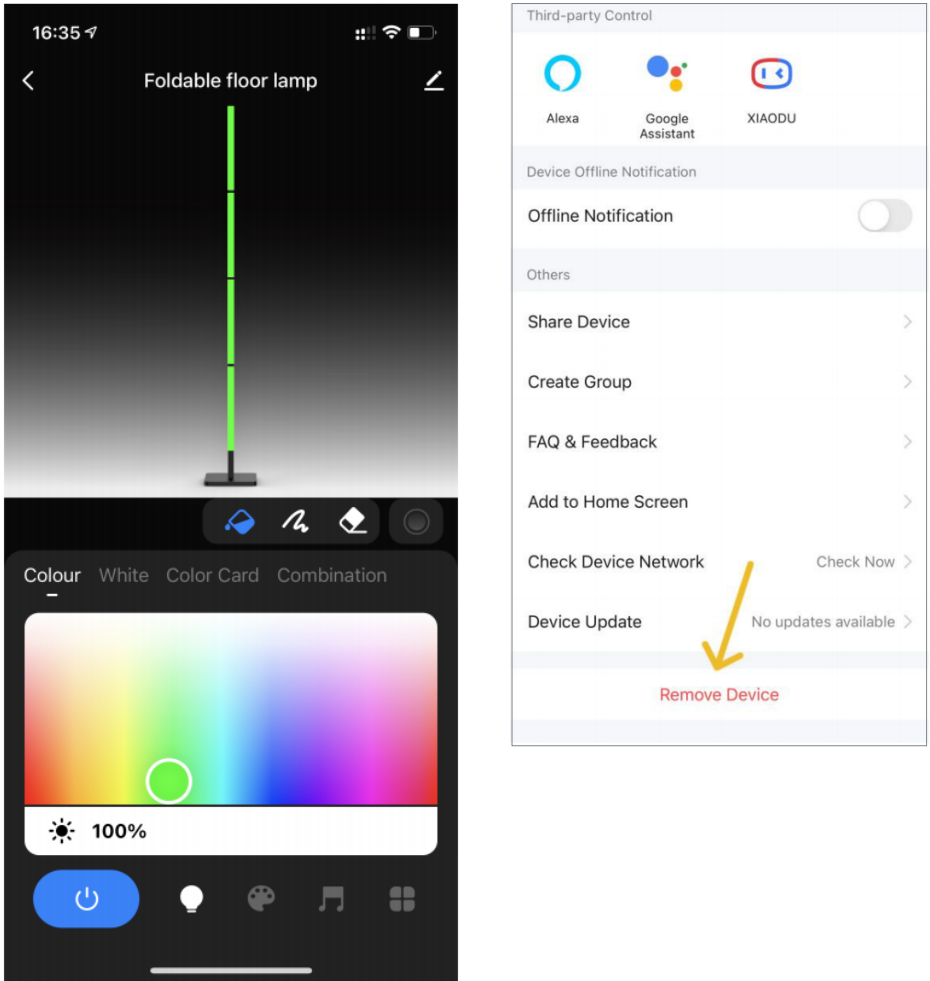


Figure 1.25

1.26 Method 3: Click "... "under the + icon on the right side, select Device Management to enter the Device Management page to remove the devices, which can also remove multiple devices.

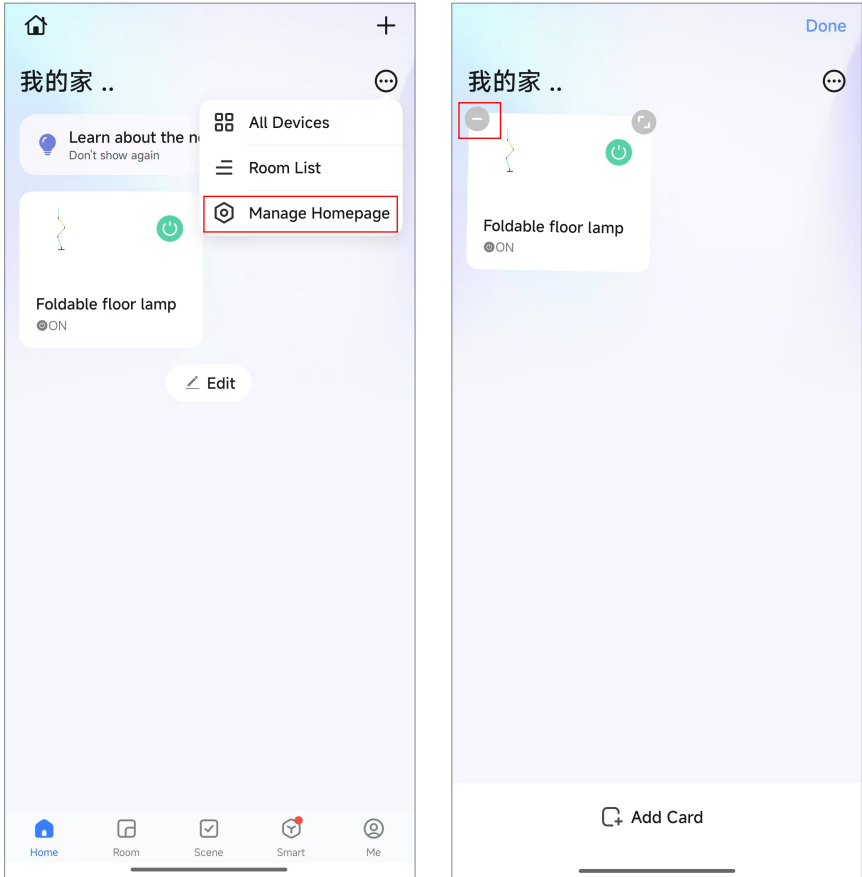


Figure 1.26

1.27 There are two ways of renaming device. Method 1 is to rename the device by clicking the writing icon when the device matching is completed.

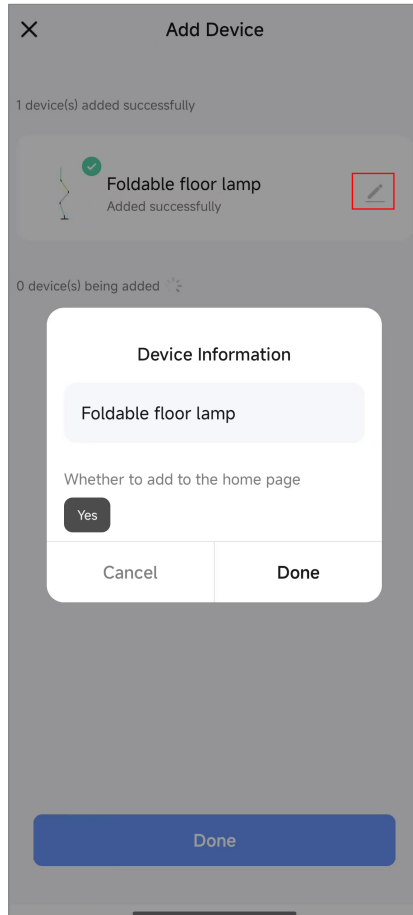


Figure 1.27

1.28 Method 2: Click the writing icon on the control interface , and then click writing icon after the device name for renaming.

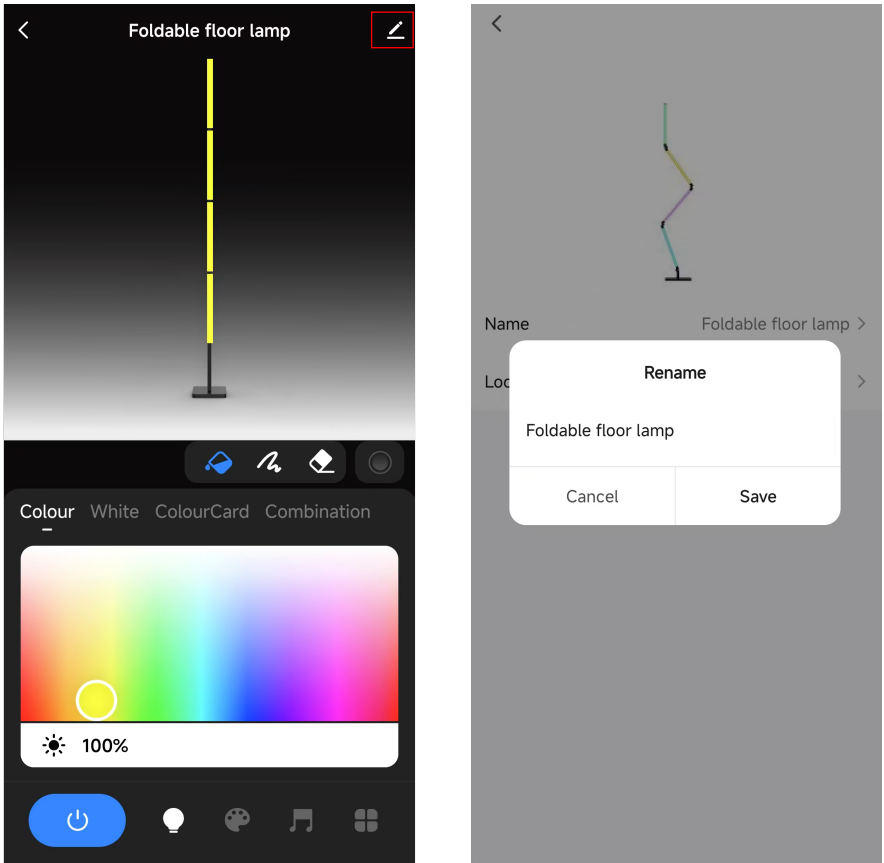


Figure 1.28

Attention

1. Please turn off power supply before installation.
2. Please ensure input voltage to be same as requirements from device.
3. Don't disassemble device if you are not expert, other wise it will damage it.
4. Please do not use the light in the place with widely range metal area or strong electromagnetic wave nearby, otherwise, the remote distance will be seriously affected.
5. App and equipment firmware will be updated from time to time, If there is any upgrade, please upgrade online without notice, the manual is for reference only.