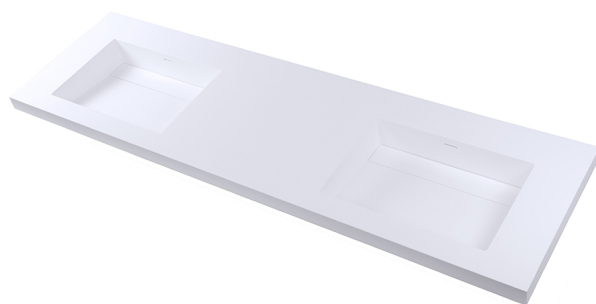


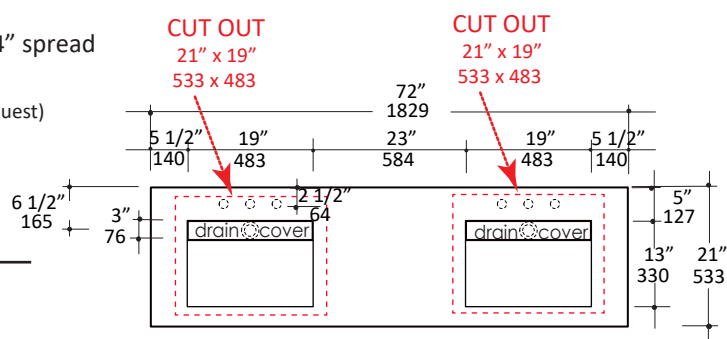
Specifications:

Installation:	Vanity-top or drop-in
Exterior Dimensions:	72" w x 21" d x 6 1/2" h
Material:	Solid surface
Weight:	Matte white - 90 lbs Gloss white - 98 lbs
Overflow:	Yes
Finishes:	001M - Matte white 001G - Gloss white
Faucet Holes:	00 - no hole 01 - one centered hole 02 - two hole - center and right, 4" spread 03 - three hole, 8" spread
Cutout size:	21" x 19" (template available upon request)
Faucet Hole Size:	Ø 1 3/8"
Drain Hole Size:	Ø 1 3/4"



Features:

- Solid surface double-bowl sink with overflow
- Solid surface drain cover
- Material is heat, stain, scratch, chemical, and impact resistant
- Most standard American grid drains can also be used
- Finished back
- Unfinished bottom



Codes + Standards:

- Meets and exceeds applicable national codes and standards

Recommended Items:

- Furniture
 - KUB-W-72 - Wall-mounted under-counter vanity without metal trims; large drawers on left and right, and two small drawers in the center
 - KUB-LEG - Set of optional metal frame for vanity
- American grid drain with overflow
 - 7100-18OF

