

# ASSEMBLY INSTRUCTIONS

## TOOLS REQUIRED:

- Allen Wrench (supplied, part # E)
- Spanner Wrench (supplied, part # F)

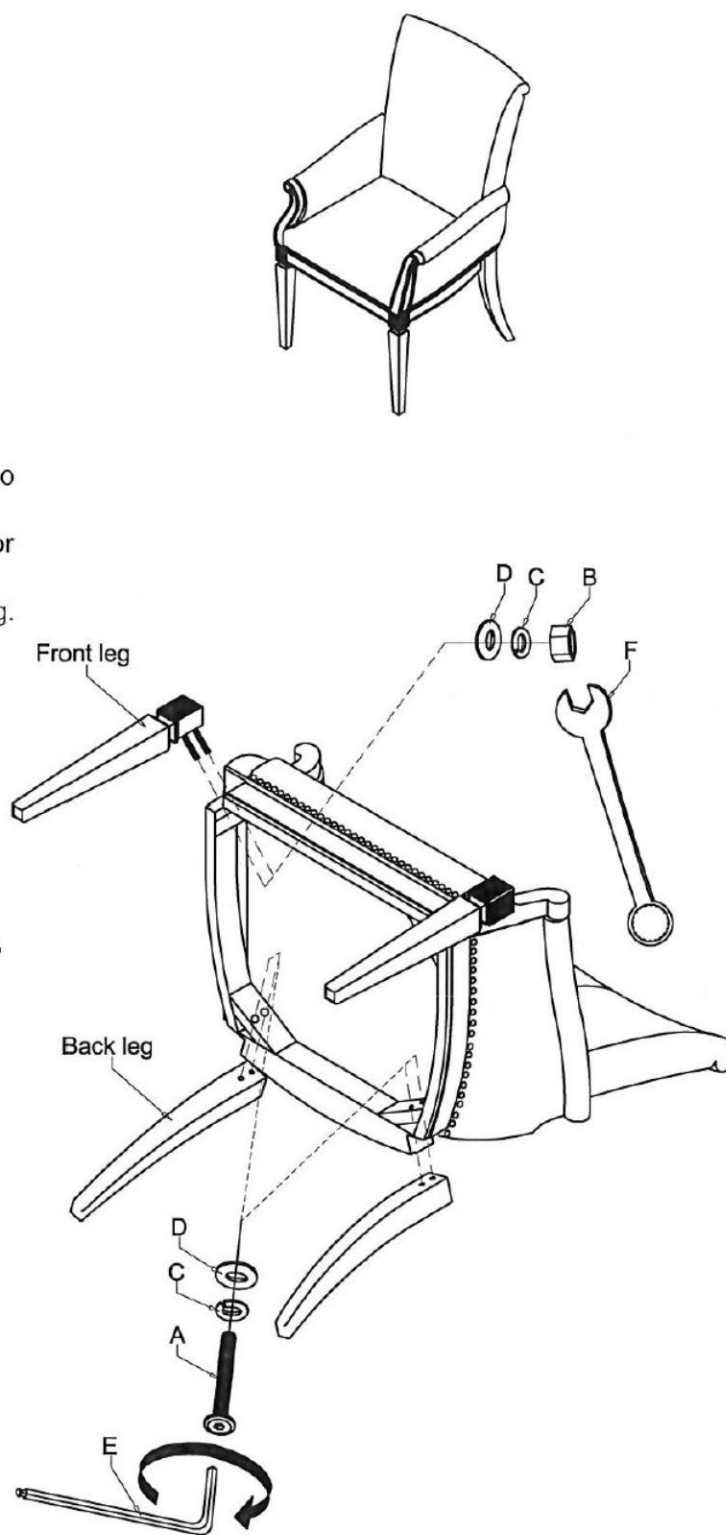
## BEFORE YOU START:

1. Check the parts against the parts list to make sure all items are present.
2. Assemble your furniture on a soft, flat surface to avoid scratching the finish.
3. **CAUTION:** Do not over tighten screws, nuts or bolts during assembly.
4. Your furniture may require occasional tightening.

## INSTRUCTIONS:

1. Place the seat frame back on a smooth and flat surface with boring holes facing up. Attach back leg to the seat, using Flat Washer (D), Lock Washer (C) and Bolt (A). Tighten all bolts with Wrench (E). (Figure 1)
2. Repeat the process for the other back leg.
3. Attach the front leg to the front corner block of the seat, using Flat Washer (D), Lock Washer (C), Nuts (B) and tighten all nuts with Wrench (F). (Figure 2)
4. Repeat the process for the other front leg.

No.	Hardware List		Q'ty
A		Bolt Ø5/16"x3"	4
B		Hex Nut Ø5/16"	4
C		Lock Washer Ø5/16"	8
D		Flat Washer Ø5/16"	8
E		Allen Wrench 5mm	1
F		Spanner Wrench 12mm	1



Thank you for purchasing