

Vanity Set With 10 LED Bulbs

Assembly Instruction



THIS INSTRUCTION BOOKLET CONTAINS IMPORTANT SAFETY INFORMATION.
PLEASE READ AND KEEP FOR FUTURE REFERENCE.

Parts List and Diagram



1 pc
A



4 pcs
B



2 pcs
C



2 pcs
D



1 pc
E



1 pc
F



4 pcs
G

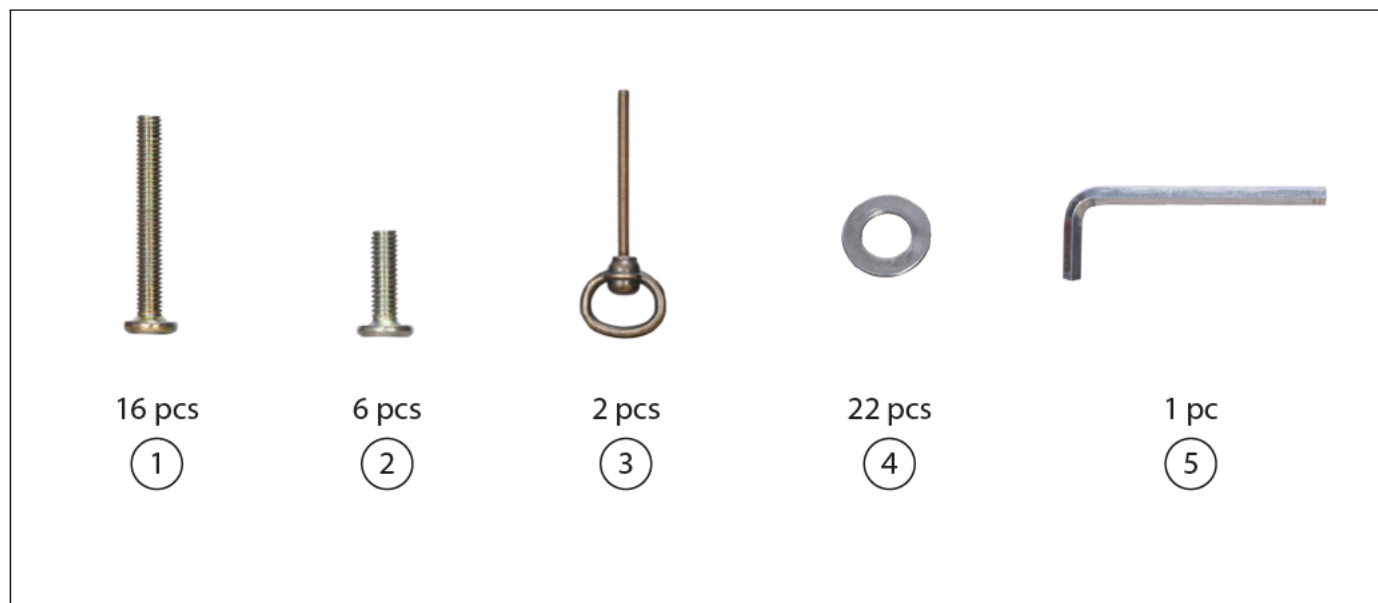


1 pc
H



1 pc
I

Parts List and Diagram



Assemble Steps

Step 1

Place Cushion **F** upside down on a flat surface (carpeting is recommended) and install Part **G** (4 pcs) on Cushion **F** one by one.



Assemble Steps

Step 2

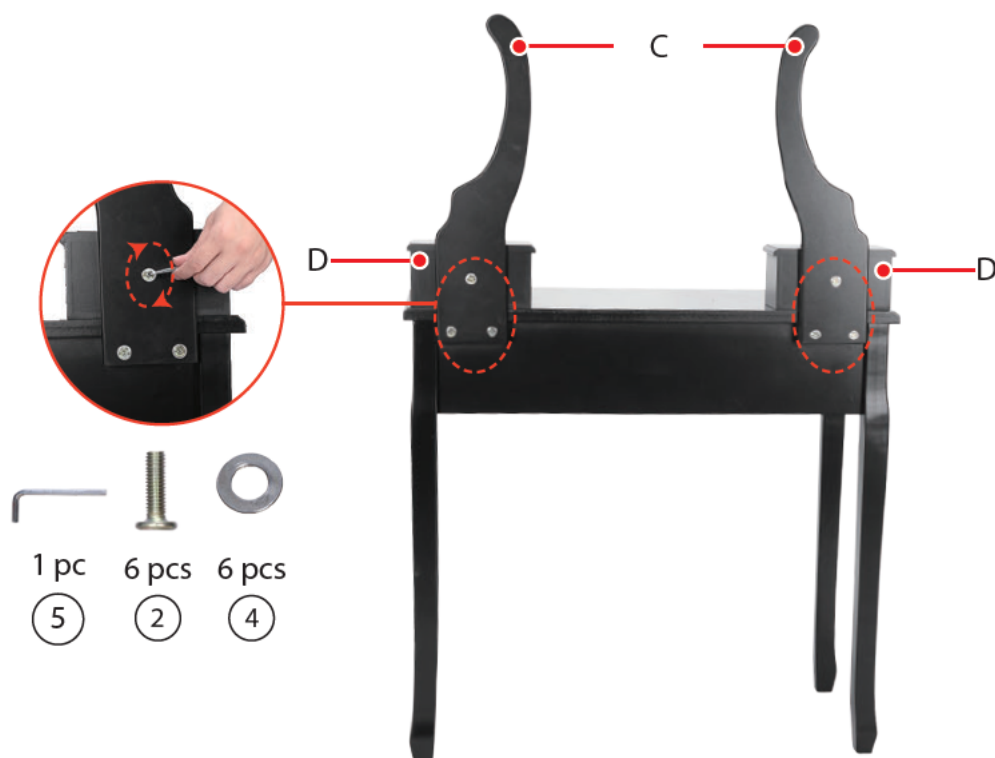
Place Table **A** upside down on a flat surface. Install Part **B** (4 pcs) on Table **A** and install 3 knobs on its drawers one by one.



Assemble Steps

Step 3

Connect Part **C** (2 pcs) with Part **D** (2 pcs). Fix them on the back of the table and tighten the screws.



Step 4

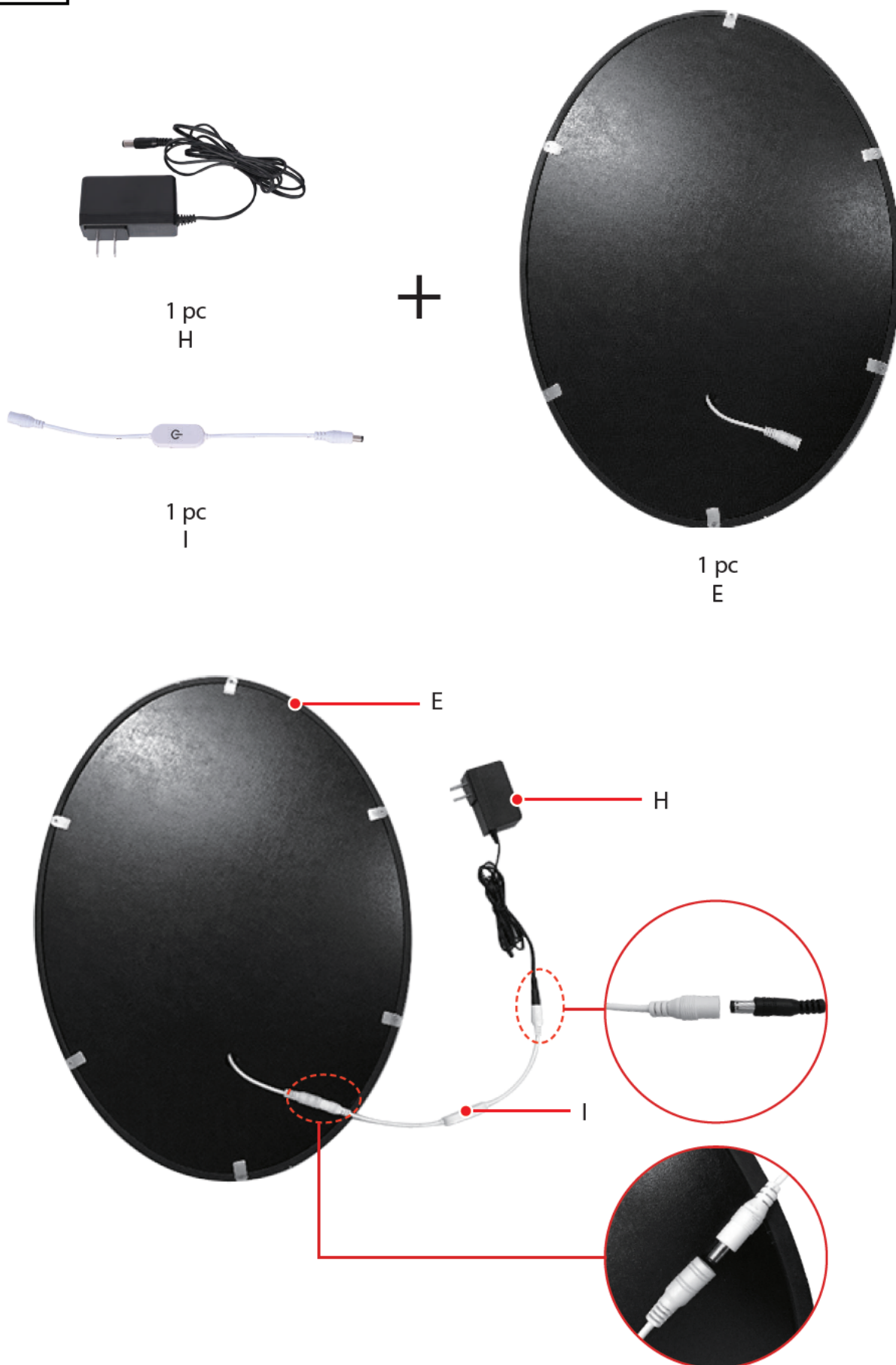
Install Mirror **E** between Part **C** (2 pcs).



Assemble Steps

Step 5

Connect Part **H** with Part **I**. Connect Part **I** with Part **E** from the back connector.





Operating instructions for the lights

1. After the wiring is connected, insert the plug into a socket containing the grounding wire.
2. Click the power button to turn on or turn off all the 10 light bulbs on the vanity mirror.
3. Long press the power button to make the bulb go brighter or dimmer when the lights are on. The brightness setting of the light will be automatically saved.
4. If you need to re-adjust the brightness of the light later, please repeat steps 1-2.