

m o o o i

# Hana Armchair

SIMONE BONANNI



Create your own world in your safe space that is the Hana Armchair. Let the softness of the folds lure you in and when you step into that abundance of soft fabric, you're stepping into your own space and away from the hustle and bustle of the world. A moment of contemplation and ultimate relaxation. Mindfulness made tangible in the shape of a chair. The Hana is sculptured around the human body and its need to be pampered, embraced and accommodated for long stretches of time. The generous, cute, subtly curves allow for hours of lounging to daydream, read a book and let your imagination fly.

---

## *Detailing*

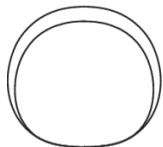


Hana's curves are complimented with carefully thought through folds, with the unique characteristics of all available fabrics in mind.

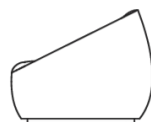
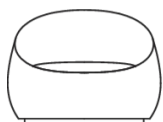
# Hana Armchair / Armchair

## Dimensions

**100cm | 39.4"**



**92cm | 36.2"**



**74cm | 29.1"**

## Product

**WIDTH** 92cm | 36.2"

**HEIGHT** 74cm | 29.1"

**DEPTH** 92cm | 36.2"

**DIAMETER** 92cm | 36.2"

## Packaging

**WIDTH** 111cm | 43.7"

**HEIGHT** 80cm | 31.5"

**CUBAGE** 0.9m<sup>3</sup> | 31.67ft<sup>3</sup>

**LENGTH** 101cm | 39.8"

**WEIGHT** 46.5kg | 102.5lbs

## Technical

### MATERIAL

Metal frame. elastic straps, cut and molded foam.

### HEIGHT ARMREST

69cm | 27.2"

### SEAT DEPTH

60cm | 23.6"

### SEAT HEIGHT

40cm | 15.7"

### SEAT WIDTH 2

57cm | 22.4"

### HEIGHT ARMREST 2

41cm | 16.1"

### SEAT DEPTH 2

42cm | 16.5"

### SEAT WIDTH

67cm | 26.4"

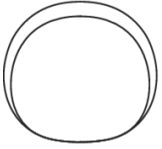
### SEATING CAPACITY

1

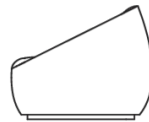
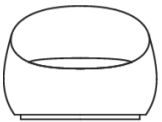
# Hana Armchair / Swivel

## Dimensions

**100cm | 39.4"**



**92cm | 36.2"**



**74cm | 29.1"**

## Product

**WIDTH** 92cm | 36.2"

**HEIGHT** 74cm | 29.1"

**DEPTH** 92cm | 36.2"

**DIAMETER** 92cm | 36.2"

## Packaging

**WIDTH** 100cm | 39.4"

**HEIGHT** 70cm | 27.6"

**CUBAGE** 0.91m<sup>3</sup> | 32.14ft<sup>3</sup>

**LENGTH** 130cm | 51.2"

**WEIGHT** 50kg | 110.23lbs

## Technical

### MATERIAL

Metal frame. elastic straps, cut and molded foam.

### HEIGHT ARMREST

69cm | 27.2"

### SEAT DEPTH

60cm | 23.6"

### SEAT HEIGHT

40cm | 15.7"

### SEAT WIDTH 2

57cm | 22.4"

### HEIGHT ARMREST 2

41cm | 16.1"

### SEAT DEPTH 2

42cm | 16.5"

### SEAT WIDTH

67cm | 26.4"

### SEATING CAPACITY

1

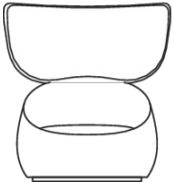
# Hana Armchair / Wingback

## Dimensions

119cm | 46.9"



96cm | 37.8"



126cm | 49.6"

## Product

**WIDTH** 119cm | 46.9"

**HEIGHT** 126cm | 49.6"

**DEPTH** 96cm | 37.8"

## Packaging

**WIDTH** 130cm | 51.2"

**HEIGHT** 133cm | 52.4"

**CUBAGE** 1.85m<sup>3</sup> | 65.33ft<sup>3</sup>

**LENGTH** 107cm | 42.1"

**WEIGHT** 86.5kg | 190.7lbs

## Technical

### MATERIAL

Metal frame. elastic straps, cut and molded foam.

### HEIGHT ARMREST

69cm | 27.2"

### SEAT DEPTH

60cm | 23.6"

### SEAT HEIGHT

40cm | 15.7"

### SEAT WIDTH 2

57cm | 22.4"

### HEIGHT ARMREST 2

41cm | 16.1"

### SEAT DEPTH 2

42cm | 16.5"

### SEAT WIDTH

67cm | 26.4"

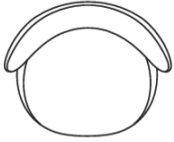
### SEATING CAPACITY

1

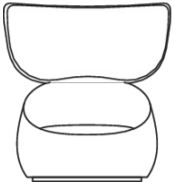
# Hana Armchair / Wingback Swivel

## Dimensions

119cm | 46.9"



96cm | 37.8"



126cm | 49.6"

## Product

**WIDTH** 119cm | 46.9"

**HEIGHT** 126cm | 49.6"

**DEPTH** 96cm | 37.8"

## Packaging

**WIDTH** 130cm | 51.2"

**HEIGHT** 133cm | 52.4"

**CUBAGE** 1.85m<sup>3</sup> | 65.33ft<sup>3</sup>

**LENGTH** 107cm | 42.1"

**WEIGHT** 86.5kg | 190.7lbs

## Technical

### MATERIAL

Metal frame. elastic straps, cut and molded foam.

### HEIGHT ARMREST

69cm | 27.2"

### HEIGHT ARMREST 2

41cm | 16.1"

### SEAT DEPTH

60cm | 23.6"

### SEAT DEPTH 2

42cm | 16.5"

### SEAT HEIGHT

40cm | 15.7"

### SEAT WIDTH

67cm | 26.4"

### SEAT WIDTH 2

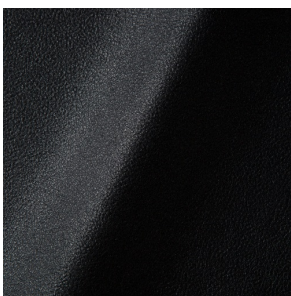
57cm | 22.4"

### SEATING CAPACITY

1

## Upholstery

*ABBRACCI (available in 5 colours)*



### COMPOSITION

100% PES

### ABRASION

30000 martindale  
lightfastness 3 - 4  
pilling 5

### FIRE RESISTANCE

BS 5852 - Ignition source  
0 (Cigarette)  
BS 5852 - Ignition source  
1 (Match flame equivalent)  
EN 1021-1 (Cigarette)  
EN 1021-2 (Match)  
TB 117-2013

*BOUCLE (available in 4 colours)*



**COMPOSITION**

43% CO, 14% PA, 12% CV,  
3% PES, 28% PAN

**ABRASION**

20000 martindale  
lightfastness 4 - 6  
pilling 4 - 5

**FIRE RESISTANCE**

EN 1021-1 (Cigarette)  
EN 1021-2 (Match)

---

*CANVAS 2 (available in 45 colours)*



**COMPOSITION**

90% WO, 10% PA

**ABRASION**

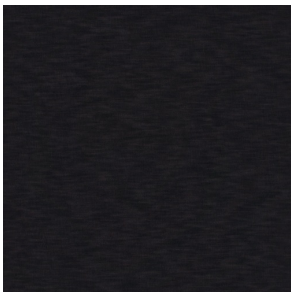
100000 martindale  
lightfastness 6  
pilling 4

**FIRE RESISTANCE**

BS 5852 - Ignition source  
1 (Match flame equivalent)  
BS 5852 - Ignition source  
0 (Cigarette)  
TB 117-2013  
EU Ecolabel

---

*DENIM (available in 3 colours)*



**COMPOSITION**

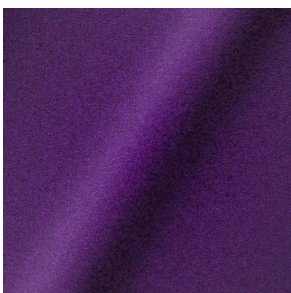
100% CO

**ABRASION**

70000 martindale  
lightfastness 4  
pilling 3 - 4

---

*DIVINA 3 (available in 56 colours)*



**COMPOSITION**

100% WO

**ABRASION**

45000 martindale  
lightfastness 7  
pilling 3

**FIRE RESISTANCE**

BS 5852 - Ignition source  
0 (Cigarette)  
BS 5852 - Ignition source  
5 (Crib 5)  
BS 5852 - Ignition source  
1 (Match flame equivalent)  
EN 1021-1 (Cigarette)  
EN 1021-2 (Match)  
TB 117-2013  
EU Ecolabel

---

*DIVINA MD (available in 27 colours)*



**COMPOSITION**

100% WO

**ABRASION**

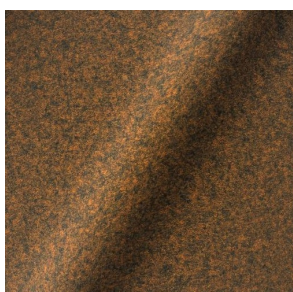
45000 martindale  
lightfastness 6  
pilling 3

**FIRE RESISTANCE**

BS 5852 - Ignition source  
0 (Cigarette)  
BS 5852 - Ignition source  
5 (Crib 5)  
BS 5852 - Ignition source  
1 (Match flame equivalent)  
EN 1021-1 (Cigarette)  
EN 1021-2 (Match)  
EU Ecolabel

---

*DIVINA MELANGE 3 (available in 49 colours)*



**COMPOSITION**

100% WO

**ABRASION**

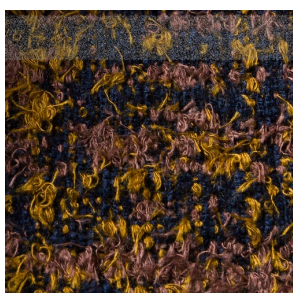
45000 martindale  
lightfastness 6 - 7  
pilling 3

**FIRE RESISTANCE**

BS 5852 - Ignition source  
0 (Cigarette)  
BS 5852 - Ignition source  
5 (Crib 5)  
BS 5852 - Ignition source  
1 (Match flame equivalent)  
EN 1021-1 (Cigarette)  
EN 1021-2 (Match)  
TB 117-2013  
EU Ecolabel

---

*Bearded Leopard (available in 3 colours)*



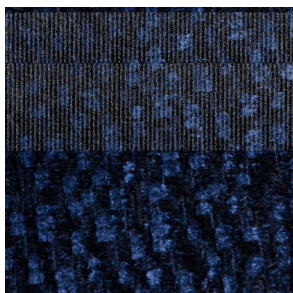
**COMPOSITION**

77% CV, 15% PES, 7% CO,  
1% PA

**ABRASION**

15000 martindale  
lightfastness 4 - 6  
pilling 4

*Calligraphy Bird (available in 4 colours)*



**COMPOSITION**

64% CV, 21% PES, 15%  
CO

**ABRASION**

50000 martindale  
lightfastness 4 - 6  
pilling 5

---

*Dodo Pavone (available in 3 colours)*



**COMPOSITION**

12% CO, 88% PES

**ABRASION**

40000 martindale  
lightfastness 5  
pilling 4 - 5

---

*Memento Moooi Medley (available in 1 colours)*



**COMPOSITION**

100% PES

**ABRASION**

50000 martindale  
lightfastness 4 - 6  
pilling 5

**FIRE RESISTANCE**

EN 1021-1 (Cigarette)  
EN 1021-2 (Match)  
TB 117-2013

---

*Menagerie of Extinct Animals (available in 2 colours)*



**COMPOSITION**

100% PES

**ABRASION**

50000 martindale  
lightfastness 4 - 6  
pilling 5

**FIRE RESISTANCE**

EN 1021-1 (Cigarette)  
EN 1021-2 (Match)  
TB 117-2013

*Rendezvous Tokyo Blue (available in 1 colours)*



**COMPOSITION**  
100% PES

**ABRASION**  
50000 martindale  
lightfastness 4 - 6  
pilling 5

*Blushing Sloth Melange Mohair (available in 1 colours)*



**COMPOSITION**  
85% WV, 15% WM

**ABRASION**  
15000 martindale  
lightfastness 4 - 6  
pilling 2 - 3

*FIORD (available in 39 colours)*

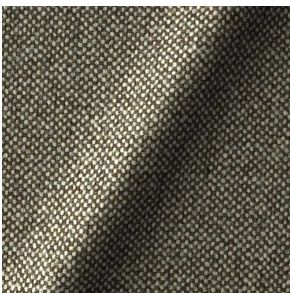


**COMPOSITION**  
92% WV, 8% PA

**ABRASION**  
60000 martindale  
lightfastness 6  
pilling 4 - 5

**FIRE RESISTANCE**  
EN 1021-1 (Cigarette)  
EN 1021-2 (Match)  
BS 5852 - Ignition source  
0 (Cigarette)  
BS 5852 - Ignition source  
1 (Match flame equivalent)

*HALLINGDAL 65 (available in 58 colours)*



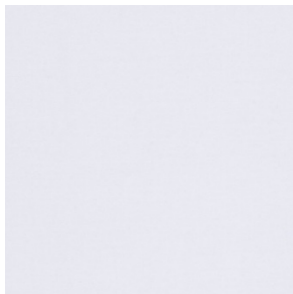
**COMPOSITION**  
30% CV, 70% WV

**ABRASION**  
100000 martindale  
lightfastness 7  
pilling 3 - 4

**FIRE RESISTANCE**  
BS 5852 - Ignition source  
0 (Cigarette)  
BS 5852 - Ignition source  
5 (Crib 5)  
BS 5852 - Ignition source  
1 (Match flame equivalent)  
EN 1021-1 (Cigarette)  
EN 1021-2 (Match)  
TB 117-2013  
EU Ecolabel

---

*HARALD 3 (available in 30 colours)*



**COMPOSITION**

100% CO

**ABRASION**

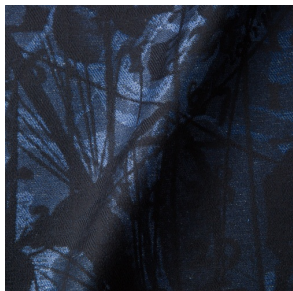
100000 martindale  
lightfastness 5  
pilling 4 - 5

**FIRE RESISTANCE**

EN 1021-1 (Cigarette)

---

*JACQUARD, ANDAZ (available in 1 colours)*



**COMPOSITION**

34% CO, 30% CV, 24%  
LI, 12% PA

**ABRASION**

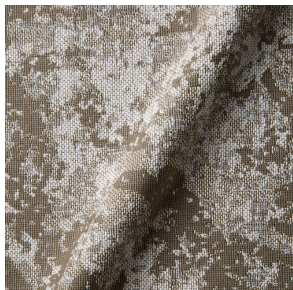
25000 martindale  
lightfastness 4 - 6  
pilling 4 - 5

**FIRE RESISTANCE**

BS 5852 - Ignition source  
0 (Cigarette)  
BS 5852 - Ignition source  
1 (Match flame equivalent)  
EN 1021-1 (Cigarette)  
EN 1021-2 (Match)

---

*JACQUARD, FRESC (available in 1 colours)*



**COMPOSITION**

52% CV, 38% CO, 10% LI

**ABRASION**

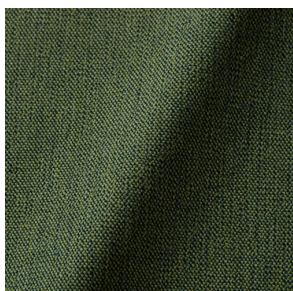
15000 martindale  
lightfastness 3 - 4  
pilling 2 - 3

**FIRE RESISTANCE**

BS 5852 - Ignition source  
0 (Cigarette)  
EN 1021-1 (Cigarette)  
EN 1021-2 (Match)

---

*JUSTO (available in 10 colours)*



**COMPOSITION**

15% CO, 35% PC, 10% PA,  
40% CV

**ABRASION**

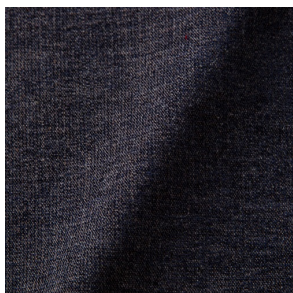
50000 martindale  
lightfastness 5  
pilling 4

**FIRE RESISTANCE**

EN 1021-1 (Cigarette)  
EN 1021-2 (Match)  
TB 117-2013

---

*LISCIO (available in 11 colours)*



**COMPOSITION**

35% WO, 35% CV, 21%  
CO, 9% PA

**ABRASION**

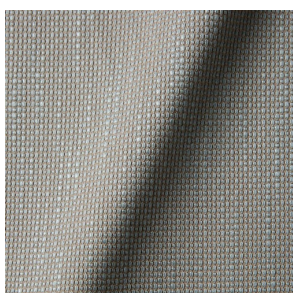
30000 martindale  
lightfastness 4 - 6  
pilling 4

**FIRE RESISTANCE**

TB 117-2013

---

*MACCHEDIL GREZZO (available in 10 colours)*



**COMPOSITION**

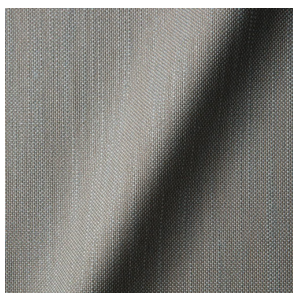
47% CO, 20% CV, 18%  
PA, 8% LI, 5% PC

**ABRASION**

15000 martindale  
lightfastness 3 - 5  
pilling 4 - 5

---

*MACCHEDIL SOTTILE (available in 10 colours)*



**COMPOSITION**

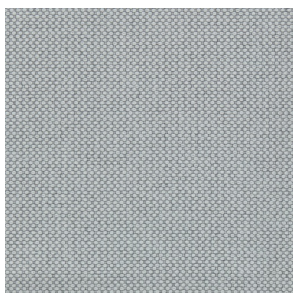
49% CV, 24% PES, 21% LI,  
6% CO

**ABRASION**

20000 martindale  
lightfastness 3 - 5  
pilling 2 - 3

---

*MERIT (available in 43 colours)*



**COMPOSITION**

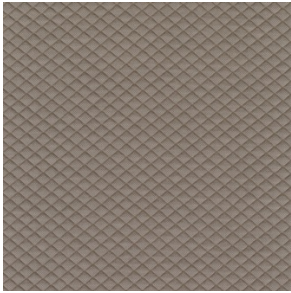
24% PES, 76%

**ABRASION**

85000 martindale  
lightfastness 7  
pilling 4

---

*MOSAIC 2 (available in 15 colours)*



**COMPOSITION**

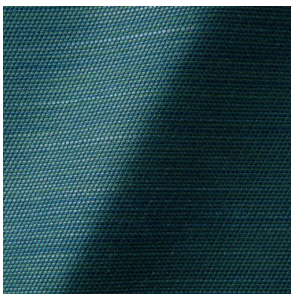
58% PES, 27% WV, 9% PA,  
6% EA

**ABRASION**

100000 martindale  
lightfastness 6 - 7  
pilling 4 - 5

---

*ORAY RAY (available in 15 colours)*



**COMPOSITION**

39% LI, 38% CV, 15% PE,  
8% CO

**ABRASION**

30000 martindale  
pilling 4 - 5

**FIRE RESISTANCE**

BS 5852 - Ignition source  
0 (Cigarette)  
BS 5852 - Ignition source  
1 (Match flame equivalent)  
TB 117-2013

---

*ORAY RONAN (available in 5 colours)*



**COMPOSITION**

39% LI, 38% CV, 15% PE,  
8% CO

**ABRASION**

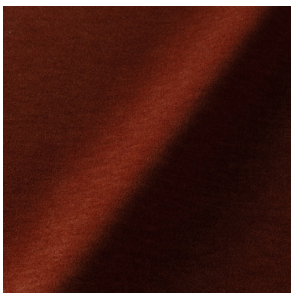
30000 martindale  
pilling 4 - 5

**FIRE RESISTANCE**

BS 5852 - Ignition source  
0 (Cigarette)  
BS 5852 - Ignition source  
1 (Match flame equivalent)  
TB 117-2013

---

*PALETTE (available in 24 colours)*



**COMPOSITION**

42% CO, 29% WO, 29%  
TL

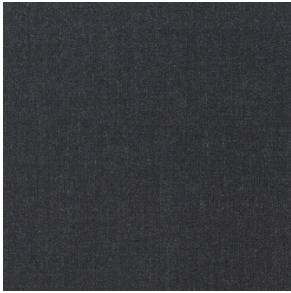
**ABRASION**

45000 martindale  
lightfastness 4 - 5  
pilling 3 - 3

**FIRE RESISTANCE**

BS 5852 - Ignition source  
0 (Cigarette)  
TB 117-2013  
BS 5852 - Ignition source  
5 (Crib 5)

*REMIX 3 (available in 53 colours)*



**COMPOSITION**

10% PA, 90% WV

**ABRASION**

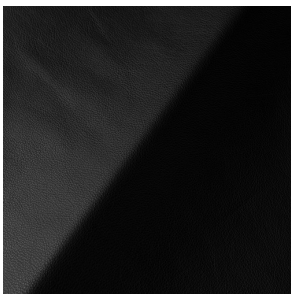
100000 martindale

lightfastness 5

pilling 4

---

*SAVANNE (available in 3 colours)*



**FIRE RESISTANCE**

EN 1021-1 (Cigarette)

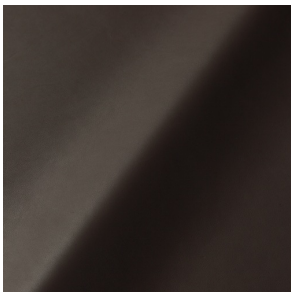
EN 1021-2 (Match)

TB 117-2013

OEKO-TEX

---

*SHADE (available in 6 colours)*



**ABRASION**

lightfastness 3 - 4

**FIRE RESISTANCE**

EN 1021-1 (Cigarette)

EN 1021-2 (Match)

TB 117-2013

---

*SOLIS (available in 9 colours)*



**COMPOSITION**

60% WO, 30% PES, 2%

PA, 3% PC

**ABRASION**

40000 martindale

lightfastness 5

pilling 3 - 4

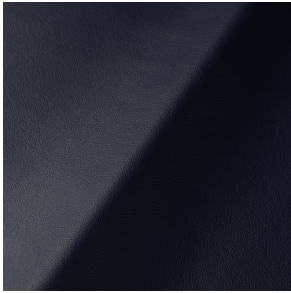
**FIRE RESISTANCE**

EN 1021-1 (Cigarette)

EN 1021-2 (Match)

TB 117-2013

*SPECTRUM (available in 11 colours)*



**ABRASION**

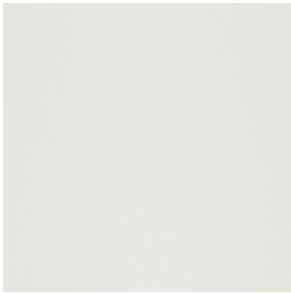
lightfastness 6 - 6

**FIRE RESISTANCE**

EN 1021-1 (Cigarette)  
EN 1021-2 (Match)  
TB 117-2013  
OEKO-TEX

---

*STEELCUT 2 (available in 37 colours)*



**COMPOSITION**

90% WV, 10% PA

**ABRASION**

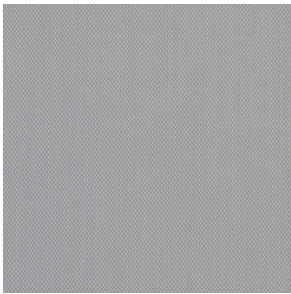
100000 martindale  
lightfastness 6  
pilling 3 - 4

**FIRE RESISTANCE**

BS 5852 - Ignition source  
0 (Cigarette)  
BS 5852 - Ignition source  
1 (Match flame equivalent)  
EN 1021-1 (Cigarette)  
EN 1021-2 (Match)  
TB 117-2013  
EU Ecolabel

---

*STEELCUT TRIO 3 (available in 54 colours)*



**COMPOSITION**

90% WV, 10% PA

**ABRASION**

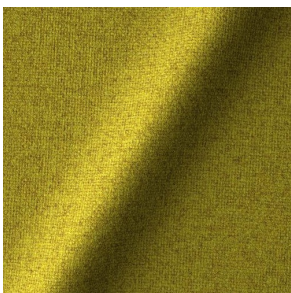
100000 martindale  
lightfastness 5  
pilling 4

**FIRE RESISTANCE**

BS 5852 - Ignition source  
0 (Cigarette)  
BS 5852 - Ignition source  
1 (Match flame equivalent)  
EN 1021-1 (Cigarette)  
EN 1021-2 (Match)  
EU Ecolabel

---

*TONICA 2 (available in 39 colours)*



**COMPOSITION**

100% WV

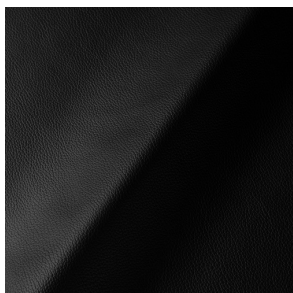
**ABRASION**

45000 martindale  
lightfastness 6 - 7  
pilling 4 - 5

**FIRE RESISTANCE**

EN 1021-1 (Cigarette)  
EN 1021-2 (Match)

*ULTRA (available in 6 colours)*



**ABRASION**

lightfastness 6 - 7

**FIRE RESISTANCE**

EN 1021-1 (Cigarette)  
EN 1021-2 (Match)  
TB 117-2013  
ANSI/BIFMA M7.1 (Total  
Volatile Organic  
Compounds)

---

*VESPER (available in 8 colours)*



**COMPOSITION**

10% CO, 40% LI, 10% PA,  
10% PES, 30% CV

**ABRASION**

40000 martindale  
lightfastness 5  
pilling 4

**FIRE RESISTANCE**

EN 1021-1 (Cigarette)  
EN 1021-2 (Match)  
TB 117-2013

---