

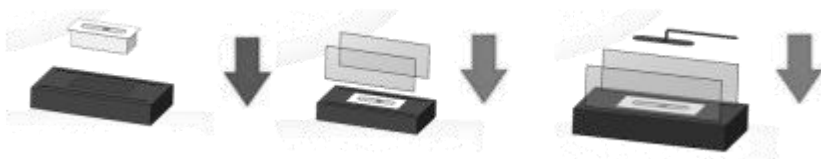
ETHANOL FIREPLACE

SECURITY TIPS

- Do not place an ethanol burner in a hot place.
- Do not use for people with respiratory problems.
- Stoves should be used in well-ventilated spaces. (Do not use in enclosed spaces, may cause carbon monoxide poisoning or the most serious death, need to be careful.)
- Do not move the product while in use.
- Do not use more than two products in the same space.
- Do not use in strong or outside wind.
- Do not place fuel around the stove.
- Keep the fuel at room temperature for ignition.
- Use the product only on horizontal surfaces.
- Please do not smoke near fuel or flames.
- Never use water to extinguish a fire.
- Do not cook food with fireworks.
- Attention: If alcohol is in the eyes, immediately flush the affected area with cold water.

INSTALLATION

Assembly method as shown.



CAUTION & CARE

- Be sure to keep the instructions in a safe place. Failure to follow instructions may result in property damage, injury or death. The seller is hereby notified that he is not responsible for any damage to the product or loss of customers caused by failure to comply with the following express notes of caution.
- Plant-based ethanol with a purity of 95% or more certified by the manufacture is recommended. (Lamp oil, gasoline, fuel gel, etc., are prohibited)
- The furnace must be completely cooled before bio-ethanol can be added.
- Keep children and pets away.

