

## Instructions for Assembly

**Before assembling The Box, place your Christmas tree securely into its tree stand.**

### Step 1

FIRST, open up The Box completely-- so the four sides are visible and extended.

### Step 2

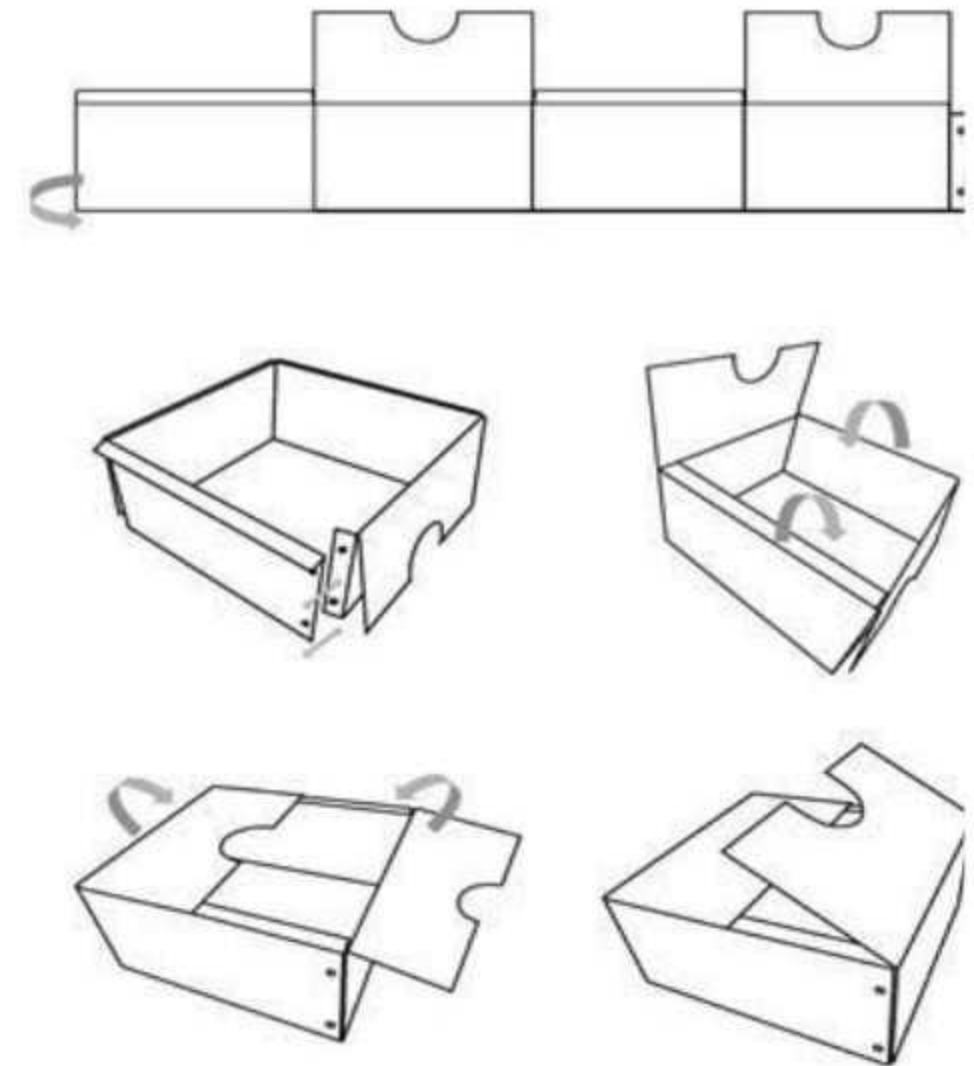
Then, close to your tree, place the Tree Box on the floor, right side up with the 2 top flaps (with semicircular cut outs) in position on top. It then forms a cube shape with one side open.

### Step 3

NEXT, with the 2 top flaps down, (but not yet fastened) the box is partially open. Now you can move it "surrounding and enclosing" your tree stand... with The Christmas Tree Box.

### Step 4

FINALLY, close up the 2 top flaps via the magnetic or velcro closures. Close the remaining open side by locating the 2 button snaps provided.. and snap shut.



Back side

## Instructions/Options for Watering Fresh Cut Trees

- A. Our Self Watering Device is your best option... it is a very simple product-inexpensive and only requires water and gravity. It is a "self propelled" method and the easiest way of refilling the tree.
- B. Usually, your tree trunk is narrower than the (6-7") opening of the box ..where there is a space. Using a watering can, or vessel with a spout, pour directly into the opening... refilling the water level.
- C. When there is no space to pour directly in..lift up either one of the top flaps slightly...to create a space for your water vessel.. If necessary, unfasten the button snaps, and move the box slightly to allow pouring directly into the opening....

