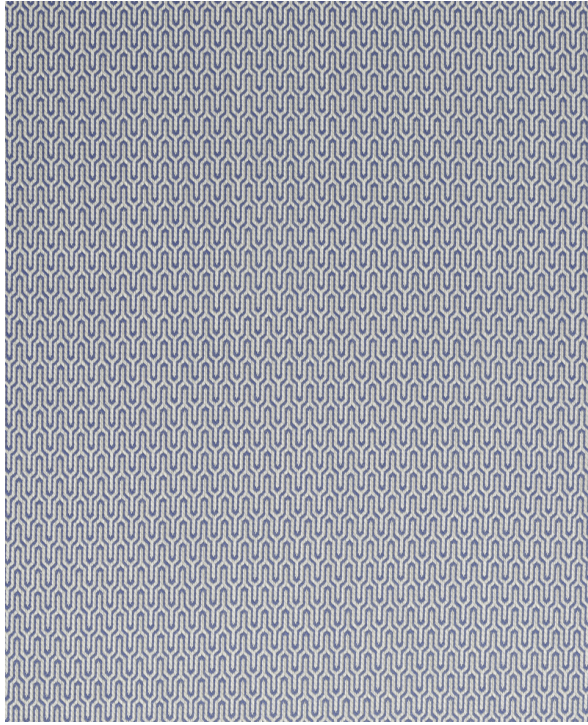




Fabric Detail for:Over And Over | Mussel Shell



Pattern:	Over And Over Mussel Shell
Width:	58 1/2"
Horizontal Repeat:	.000"
Vertical Repeat:	.000"
Repeat Direction:	Railroaded
Origin:	United States
Fabric Grade:	
Fabric Contents:	100% Polyester
Cleaning Code:	Water Based Cleaning Agents
Fabric Performance:	CA 117 2013 NFPA 260 UFAC - Class 1
Abrasion:	30,000 Double Rubs
Book Name:	MUSSELL SHELL