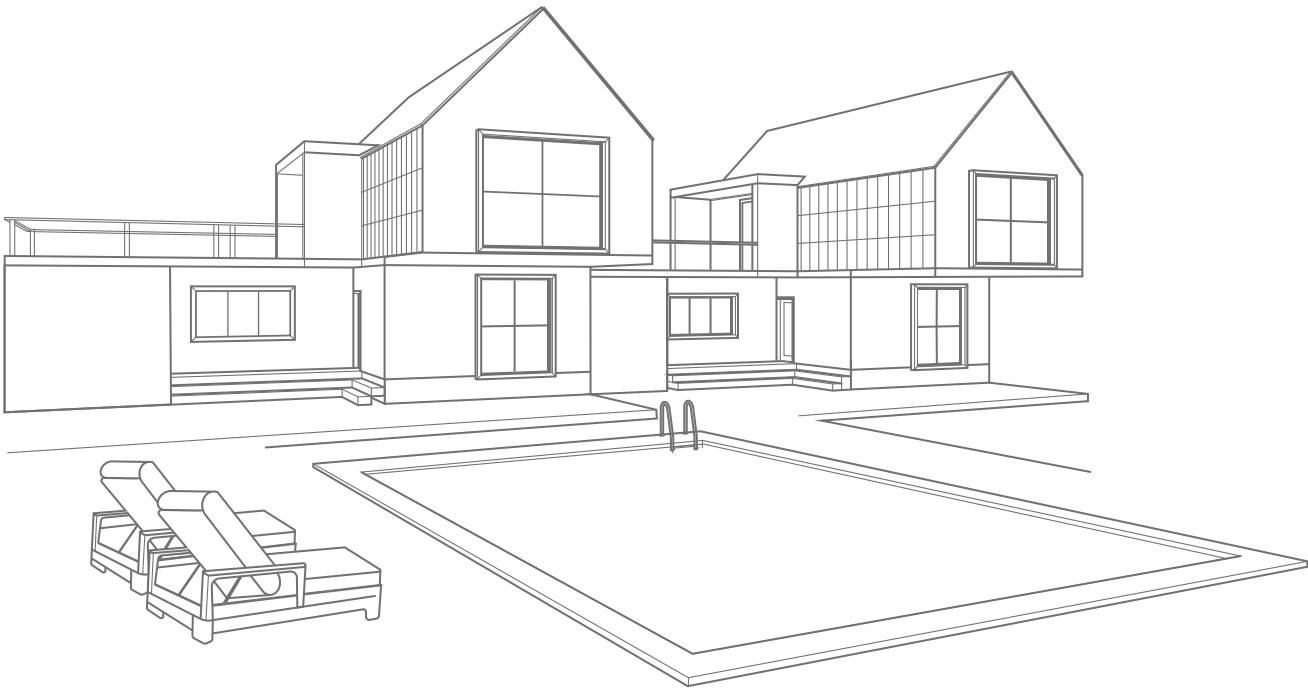


Bread Box

Product ID. QKPLT



Scan for Support
support@garvee.com



Distributed by
GARVEE.com

PRODUCT INDUCTIONS



TOP BOARD



A

TOP WINDOW



B

RIGHT SIDE BOARD



C

MIDDLE BOARD



D

BOTTOM BOARD



E

BACK BOARD



F

LOWER WINDOW

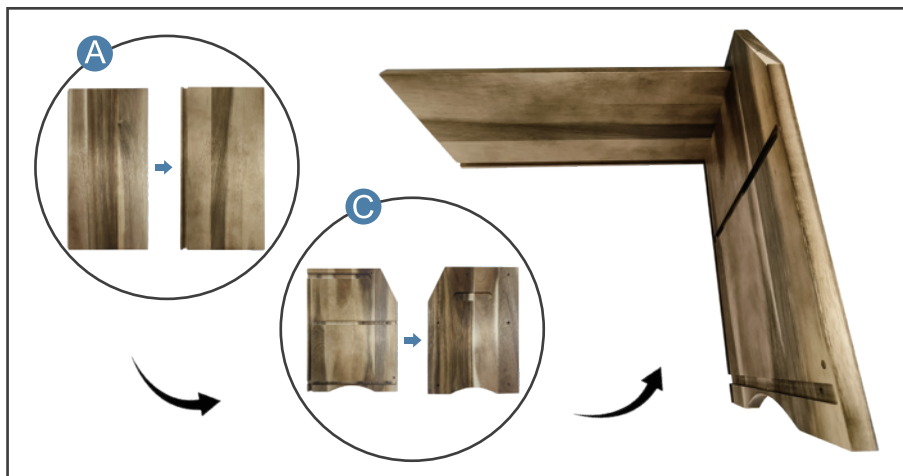


G

LEFT SIDE BOARD



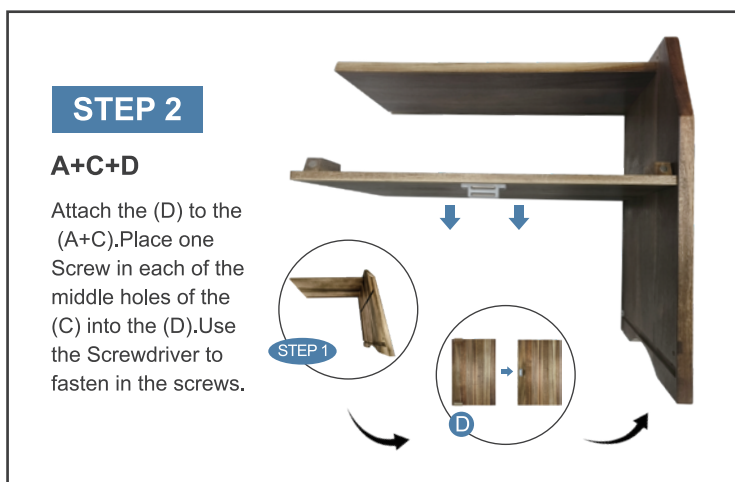
H



STEP 1

A+C

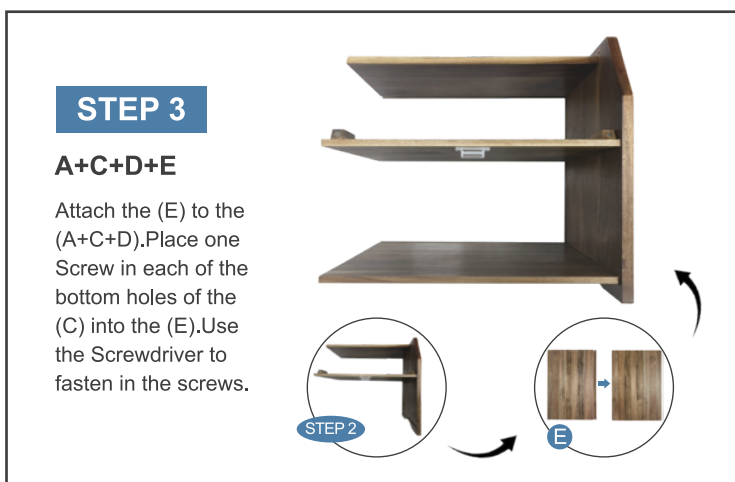
Attach the (C) to the (A). Place one Screw in each of the top holes of the (C) into the (A). Use the Screwdriver to fasten in the screws.



STEP 2

A+C+D

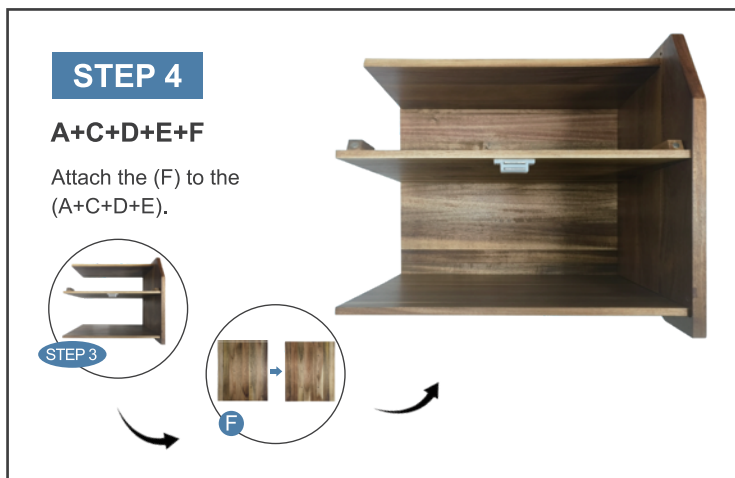
Attach the (D) to the (A+C). Place one Screw in each of the middle holes of the (C) into the (D). Use the Screwdriver to fasten in the screws.



STEP 3

A+C+D+E

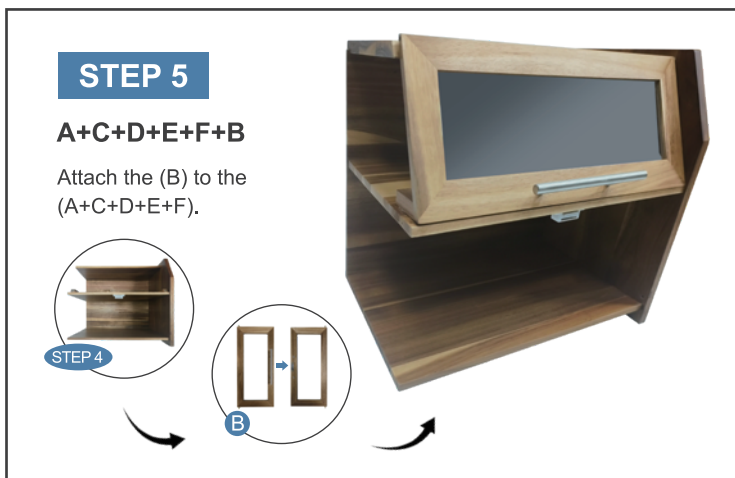
Attach the (E) to the (A+C+D). Place one Screw in each of the bottom holes of the (C) into the (E). Use the Screwdriver to fasten in the screws.



STEP 4

A+C+D+E+F

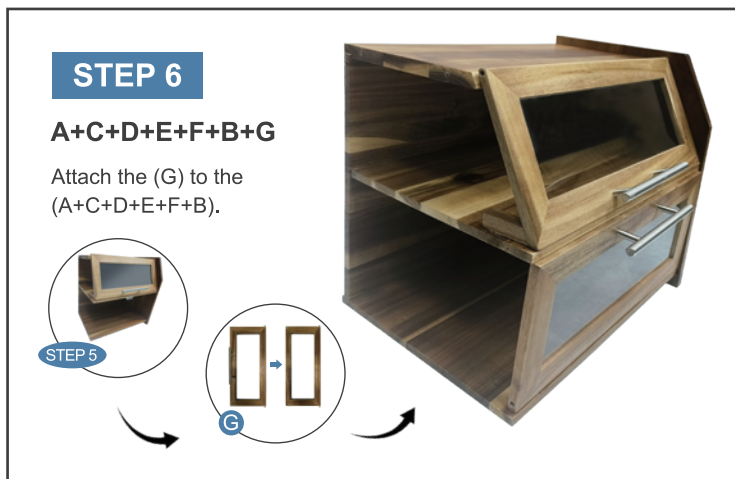
Attach the (F) to the (A+C+D+E).



STEP 5

A+C+D+E+F+B

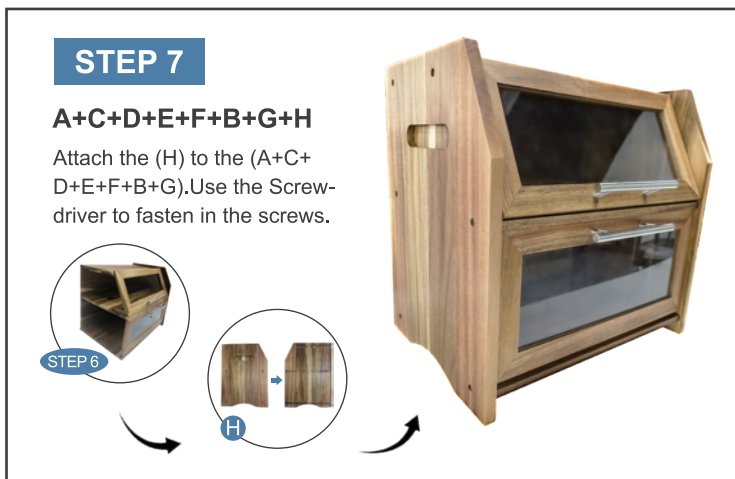
Attach the (B) to the (A+C+D+E+F).



STEP 6

A+C+D+E+F+B+G

Attach the (G) to the (A+C+D+E+F+B).



STEP 7

A+C+D+E+F+B+G+H

Attach the (H) to the (A+C+D+E+F+B+G). Use the Screwdriver to fasten in the screws.