

Step 3: Assemble the roof



g Assemble the roof support rod



h Lay the ceiling cloth flat



i Install two connecting rods



j Install four-bar linkage



k Adjust the position of the connecting rod



l Velcro tightens and fixes

Step 4: Install the ceiling

Connect both ends of the ceiling four-bar linkage
Insert the ceiling adapter
Rotate counterclockwise to lock



Open the fish tail
Adjustable ceiling direction



Step 5: Successful installation



Recumbent



Lying on the side

INSTALLATION INSTRUCTION

Model: HC-1ST Portable Pioneer



! Important matters

Please read carefully and keep it for future reference Carefully follow all warnings and assembly instructions. Do not use the hammock until it is fully installed.

Warning!

- The maximum load-bearing capacity is 250 kilograms/551 pounds.
- Please install with caution on concrete, asphalt, fill or any other hard surface. Falling onto a hard surface may cause serious harm to the user.
- Before each use, be sure to check whether the hammock, ropes, and fasteners are worn. Children should not use hammocks without adult supervision.
- Tell children not to walk or play near the hammock while it swings.
- Do not enter or exit the hammock while swinging.
- If any components are damaged, torn, or lost, do not use the hammock. Do not replace parts. Contact the nearest manufacturer to replace the parts.

Maintenance instructions

Cleaning: Hand wash with warm water at 40 ° C (104 ° F).

Avoid wetting the metal hook. Put the hammock and rope into a large bucket or bathtub filled with warm water. Add a mild liquid detergent and then use a soft brush to remove stains. Thoroughly rinse. Air dry on a flat surface.

Storage: If not frequently used, please store the hammock indoors in a cool and dry place. At the end of the season, thoroughly clean and dry the hammock before storage.

Additional Warning/Explanation

Additional warnings/instructions when used with hammock racks.

Assemble the hammock frame according to the provided assembly instructions and install the HMOK hammock.

Warning!

- Place the assembled bracket with a hammock on a flat, horizontal surface and maintain a safe distance from other objects or obstacles.
- Regularly check whether the fasteners are tightened and tighten them again if necessary.
- Do not swing excessively on the hammock, as this may cause the hammock to become unstable.
- If any components are damaged or lost, do not use the bracket. Do not replace parts. Contact the nearest original manufacturer to replace the parts.

1 Unpacking accessories

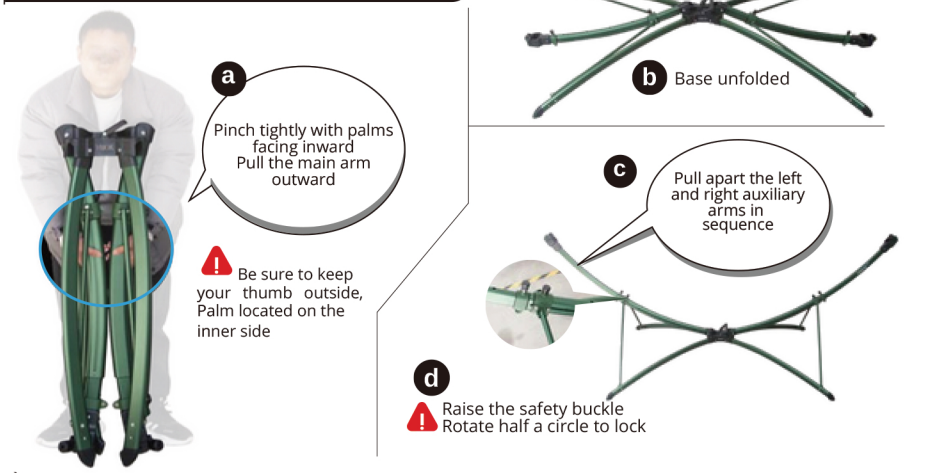


- 1.Suspended bed base
- 2.Ceiling support rod
- 3.Hanging cloth
- 4.Ceiling cloth



2 Installation steps

Step 1: Install the base



Step 2: Install the hanging cloth

