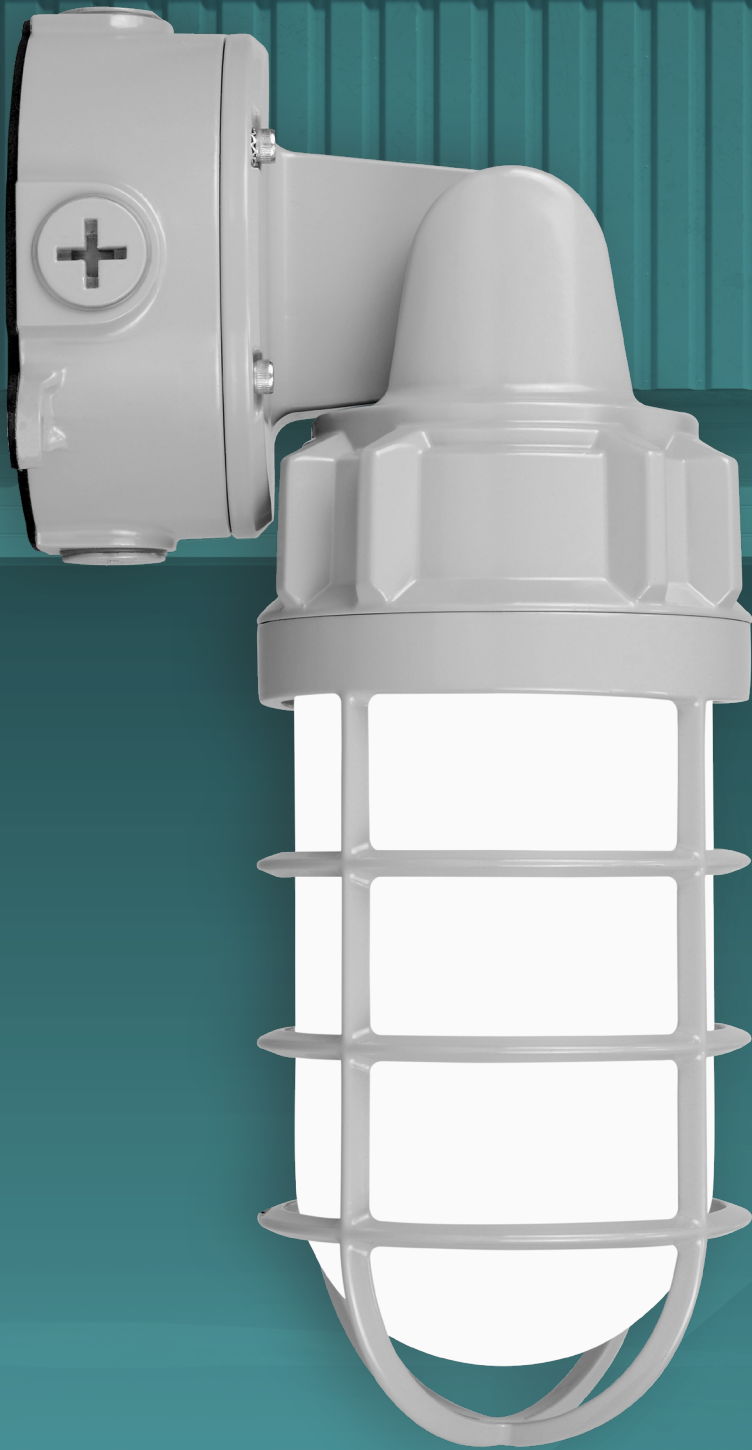


NICOR®



VTJ LED Jelly Jar

VTJ LED Jelly Jar

The NICOR LED Jelly Jar fixture blends classic vapor-tight design with modern LED efficiency and versatility. Constructed with robust die-cast aluminum housing and a sturdy glass lens, it's built for tough environments while maintaining a sleek, industrial look. Perfect for garages, porches, workshops, and utility spaces, it provides reliable lighting for both wall and ceiling mounts. With field-selectable color temperatures (3000K, 4000K, or 5000K), it offers adaptable installation to suit any environment. Wet-location rated and designed for durability, it's an ideal solution for energy-efficient, long-lasting illumination.

Adjustable Mounting Arm

Features an adjustable arm that pivot from 0° to 90° allowing for a more flexible mounting to either a wall or ceiling.

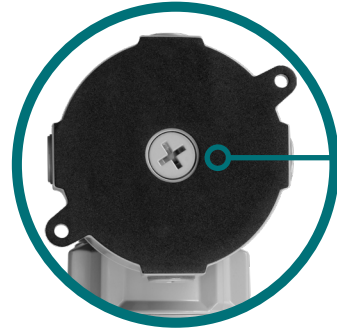


Frosted Glass LED Cover

Delivers smooth, diffused light while minimizing glare and enhancing visual comfort.

Temperature Resistance

Rated for operation in temperatures ranging from -40°C to 45°C

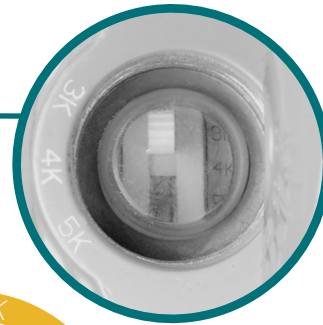


Five Gasketed Knockouts

Includes multiple wiring access points for easy and adaptable installation in a variety of setups.

Sealed CCT Selection

Protects internal components while allowing easy color temperature adjustments. VTJ1 offers three selectable CCTs suitable for any application: 3000L, 4000K, and 5000K.



Die-Cast Aluminum Cage

Corrosion resistant safety cage for a durable safeguard to protect glass from impact.



Product Features

Construction

- Die-cast aluminum housing and cage
- Polyester powder coat finish

Optical System

- Clear glass Lens
- Selectable CCTs of 3000K, 4000K and 5000K with >80 CRI

Electrical

- Single wattage output of 21W
- Input voltage of 120-277VAC
- Full-range dimming from 0 - 10VDC
- Surge protection of L/N-PE 6KV; L-N 4KV
- Operating temperature rating of -40°F to 113°F (-40°C to 45°C)

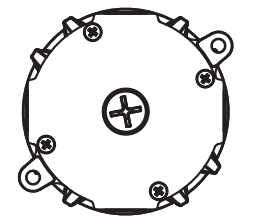
Mounting and Installation

- Easy surface mount installation on ceilings or walls
- Base hinges 180° (-90° to +90°) for mounting at any angle.
- Total 5 1/2" knockouts provided on base (1 on each side, 1 on bottom)
- External switches allow for easy CCT selection
- For installations where power surge may be possible, NICOR recommends installing additional surge protection at the fixture or electrical distribution panel

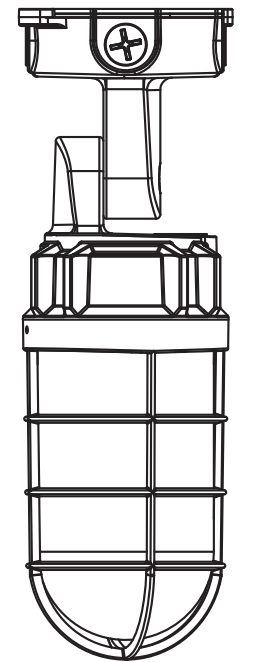
Warranty

- 5-year limited system warranty standard
- Warranty does not cover product failure due to an over voltage event (power surge)

4.41"
112.1 cm



12.64"
32.1 cm



Performance Data				
Model	Nominal CCT	Lumens	Watts	Efficiency
VTJ121US8GR	3000K	2471	21.2	116.5
	4000K	2585	20.6	125.7
	5000K	2582	21.2	121.6

Ordering Information

Series	Version	Wattage	Voltage	CCT	CRI	Finish
VTJ	1	21	U (120-277VAC)	S (30K/40K/50K)	8 (>80 CRI)	GR (Gray)

Example: VTJ121US8GR

Specifications and dimensions subject to change without notice.

Warehouse Locations

Albuquerque, NM
Buford, GA
Roseville, CA

T 800.821.6283

F 800.892.8393

www.nicorlighting.com

NICOR Lighting
2200 Midtown Pl. NE
Albuquerque, NM 87107 USA

20250709

©2025 NICOR® • ALL RIGHTS RESERVED

