

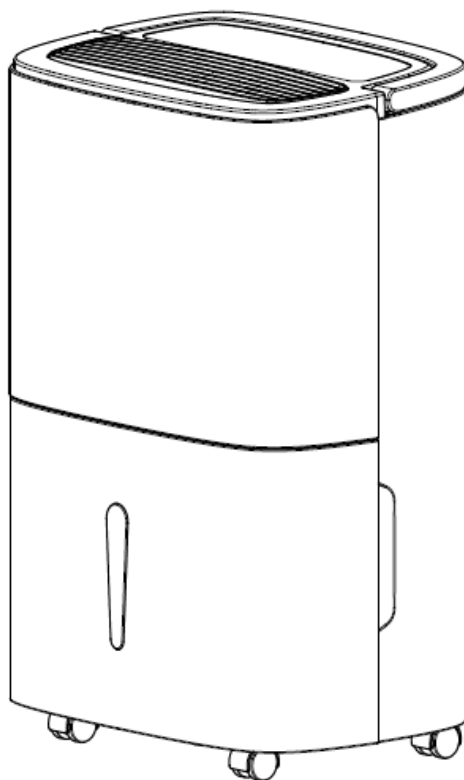
Shinco®

Dehumidifier

Model:

SDZ1-30D-W

SDZ1-50D-W



Dear Customer,

Congratulations on purchasing this equipment. Please read this manual carefully and take care of the following hints to avoid damages. Any failure caused by ignoring the items and cautions mentioned in the instruction manual is not covered by our warranty and any liability.

CONTENT

Safety Instructions	4
Notes on Refrigerant R290	6
Product Overview and Key Functions	8
Control Panel	9
Installation	10
Commissioning and Operation	15
Wifi And Smart Life Set Up	17
Cleaning And Care	18
Troubleshooting	19
Disposal Considerations	21
Declaration Of Conformity	21

TECHNICAL DATA

Item number	SDZ1-30D-W	SDZ1-50D-W
Power supply	220-240 V ~ 50 Hz	
Power	600 W	750 W
Dehumidification performance	30 L/Day	50 L/Day
Tank capacity	5 L	7 L
Air flow	230 m ³	360 m ³
Suitable room size	25-30 m ²	45-55 m ²

SAFETY INSTRUCTIONS

- Please read the operating instructions carefully before using your dehumidifier for the first time and keep it on a safe floor.
- Never immerse the appliance in water or other liquids.
- Place the unit on a stable flat surface to avoid loud noises and vibrations.
- Never operate the appliance if a cable or connector has been damaged, after appliance malfunction or if the appliance was dropped or otherwise damaged.
- The appliance may only be repaired by qualified personal, improper repair work can be a source of considerable danger for the users.
- Pull out the power plug before transporting it and / or before cleaning.
- Operate the appliance only at the voltage specified on the rating label.
- The device may not be connected to a power strip with other household appliances.
- Use the appliance only in the household, and only for the purpose it was developed for.
- Do not operate this unit near heating appliances and flammable or dangerous objects.
- If the dehumidifier is operated in a room with gas driven devices, so the room must be aired regularly and often.

- Please use the function of the internal drying, if the device is not used for a long time. This will prevent formation of mildew and unpleasant smell inside the unit.
- Do not place heavy objects on the appliance.
- Do not hang curtains or wet clothes in front of the air outlet, this will overload the device.
- The drainage hose may not be installed outdoors at low temperatures.
- To prevent spillage, empty the water tank before relocating the appliance.
- Do not tip the appliance to any side as escaping water could damage the appliance.
- If the supply cord is damaged, it must be replaced by a qualified person to avoid a hazard.
- If you smell the smoke during start-up or if you can see the smoke, immediately disconnect the power plug out and contact your dealer.
- The unit should be installed with a minimum distance of 20 cm from the wall or other obstacles.
- This appliance can be used by children aged from 8 years and above and persons with reduced physical, sensory and mental capabilities or lack of experience and knowledge if they have been given supervision or instruction concerning use of the appliance in a safe way and understand the hazards involved. Cleaning and user maintenance shall not be made by children without supervision.

NOTES ON REFRIGERANT R290

Warnings

- The air conditioning system must be kept and transported upright. Otherwise, irreparable compressor damage may occur. Leave the unit for at least 24 hours before putting it into operation.
- Switch off the device and disconnect it from the power supply before cleaning.
- Make sure that the product creates a steady stream of air. Ensure the air inlets and outlets are not blocked.
- To prevent leaks, operate this unit on a horizontal surface.
- Any person performing work on a refrigerant circuit should have a current certificate from an industry-accredited assessment body. This ensures competence for the safe handling of refrigerants according to an industry-recognised assessment specification.
- If the device stops working, dispose of it properly.
- Store the device in a well-ventilated place when not in use.
- Store the device so that it is not damaged.
- Repairs may only be carried out by the manufacturer or an authorised specialist company.
- The cables connected to the device may contain potential ignition sources.
- Do not damage any components of the refrigerant circuit. Escaping refrigerant may not be noticed because it is odourless.

- Maintenance and repairs must be carried out under the supervision of specialists in the use of flammable refrigerants.

Information for rooms with refrigerant pipes

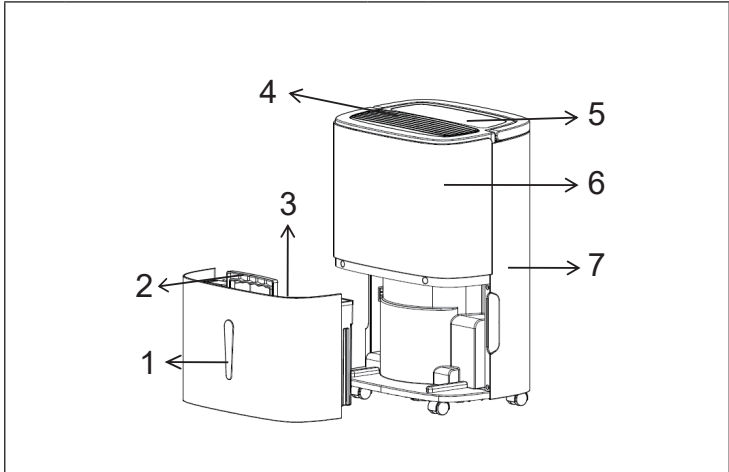
- Limit the piping to a minimum.
- Be careful not to damage the piping.
- Appliances with flammable refrigerants may only be installed in a well-ventilated room.
- Comply with national gas regulations.
- All mechanical connections must be freely accessible for maintenance purposes.



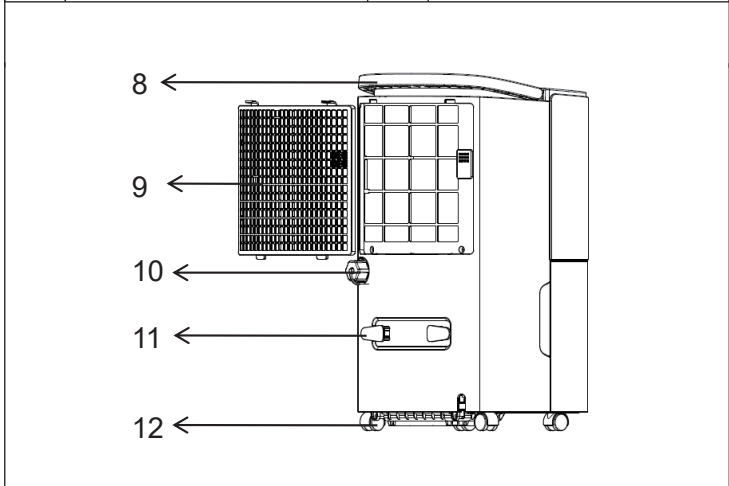
CAUTION

Risk of fire! This device contains the flammable refrigerant R290. If the refrigerant escapes and is exposed to an external ignition source, there is a risk of fire.

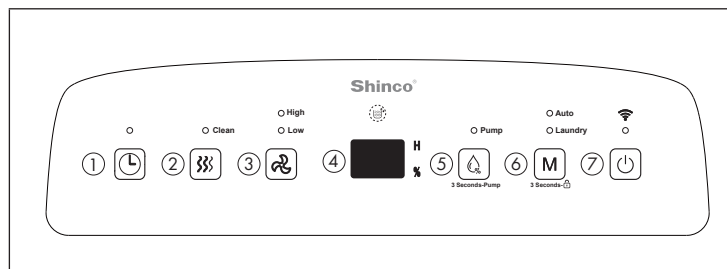
PRODUCT OVERVIEW AND KEY FUNCTIONS



1	Water tank	7	Rear cover
2	Water tank handle	8	Grip
3	Water tank cover	9	Filter frame
4	Air outlet	10	Drain plug
5	Control panel	11	Cable suspension
6	Front cover	12	Wheel



CONTROL PANEL

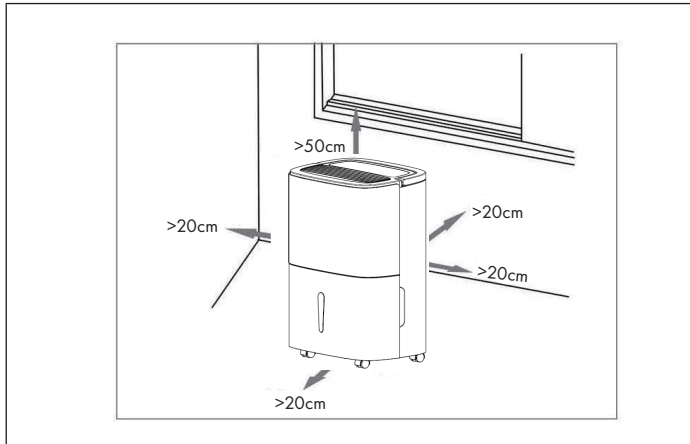


1	<p>Timer</p> <p>24-hour timer setting. Press this button to set the time to turn the dehumidifier on/off. The setting range is 1 - 24 hours. If you want to cancel the timer setting, press the button twice after confirming the set time.</p>
2	<p>Clean key</p> <p>When you press this button, the inside of the dehumidifier is dried. This prevents the formation of mould. The entire drying process takes approximately one hour. Press this button again to cancel the clean function and return to the operating status.</p>
3	<p>Air velocity</p> <p>In the AUTO or Laundry settings, you can select between high (HIGH) and low (LOW) air speed.</p>
4	<p>LCD display</p> <p>In the AUTO, Laundry modes, this display shows the ambient humidity. When humidity is set in Auto mode, this display shows the set humidity and shows the set time in Timer status. „%“ indicates the percentage of humidity.</p>
5	<p>Humidity Setting</p> <p>As soon as you press this button, the humidity in the range 30 % - 35 % - 40 % - 45 % - 50 % - 55 % - 60 % - 65 % - 70 % - 75 % - 80 % is displayed circulatingly. The humidity setting is for Auto mode only. Item SDZ1-50D-W: Press this button for about 3 seconds to turn the pump on/off.</p>

6	Mode During start-up or timer setting, press to select the mode. The corresponding indicator light will light next to the selected mode. Child lock: If you press and hold this button for more than 3 seconds, the child lock is activated and the buttons cannot be operated. Press this button again for 3 seconds to deactivate the child lock.
7	Power On/Off Press the button to turn the unit on or off.

INSTALLATION

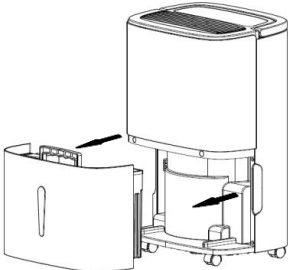
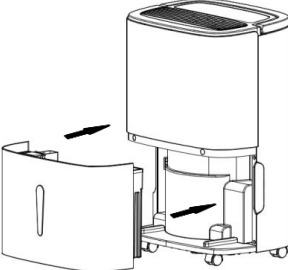
- When installing the unit, make sure that there is a minimum distance of 50 cm to the top and 20 cm to all sides of the unit (see figure below).



- If the unit is very noisy during operation, it is recommended to install rubber buffers or damping rubber mats underneath the dehumidifier to reduce vibration and noise. It also reduces the sinking of wooden and carpet floors.

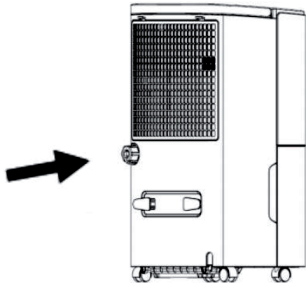
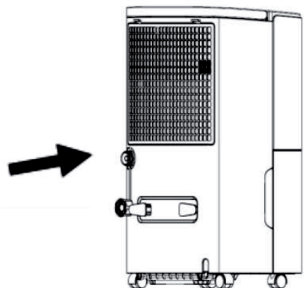
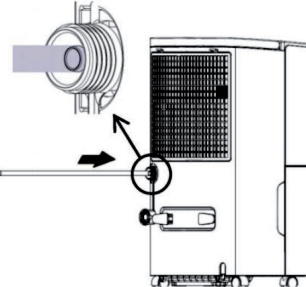
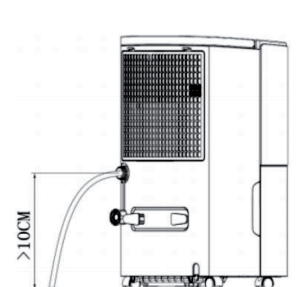
Use without continuous water drainage

As soon as the water tank is full, the corresponding indicator light flashes (compressor, fan, etc. stop operation). The unit beeps 10 times to remind the user that the water needs to be drained.

 A line drawing of a dehumidifier with its water tank cover removed. The cover is shown to the left of the unit, and an arrow points to the gap between the cover and the tank. Another arrow points to the handle on the right side of the tank.	 A line drawing of the dehumidifier with the water tank cover closed. An arrow points to the handle on the right side of the tank, which is shown in a downward position.
<p>Place both hands on each side of the rear cover. Carefully pull the water tank out of the unit and open the water tank cover on the right side of the water tank. Pour the water through the gap between the water tank and the water tank cover.</p>	<p>Close the water tank cover and turn the water tank handle downwards. Replace the water tank in the appliance and restart the dehumidifier.</p>

Note: Empty the water tank when it is full. Before reinserting the water tank into the unit, make sure that the float is movable or not.

Setting up continuous water drainage

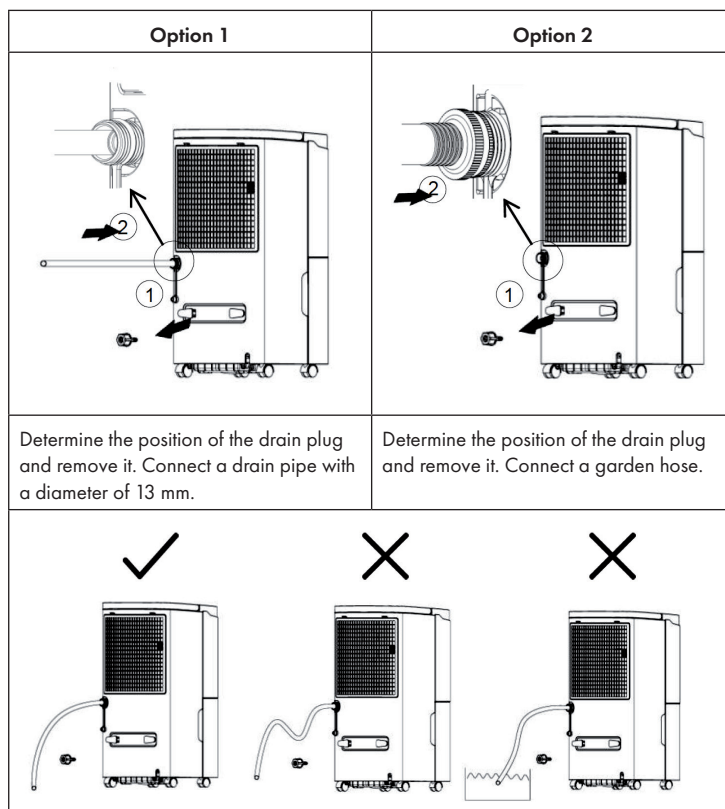
<p style="text-align: center;">1</p> 	<p style="text-align: center;">2</p> 
<p>Determine the position where the drain plug is located.</p>	<p>Remove the drain plug.</p>
<p style="text-align: center;">3</p> 	<p style="text-align: center;">4</p> 
<p>Connect a drain pipe of appropriate length to the water outlet.</p>	<p>Before use, make sure the drain line is properly connected, otherwise water leaks may occur.</p>
<p>Note: The level of the connected drain hose must not be higher than the water outlet itself and the drain hose must be properly connected otherwise water leaks may occur because the water cannot drain properly.</p>	

Setting up continuous water drainage (SDZ1-50D-W)

When the pump function is deactivated:

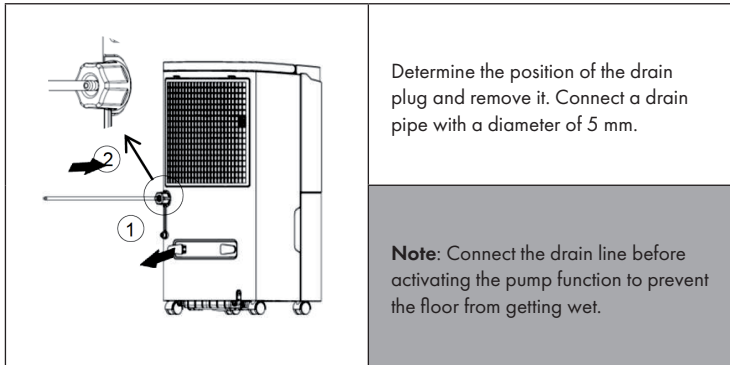
Connect a drain line (outside diameter 13 mm) to the rear of the dehumidifier. Use a garden hose with a standard 26.98 mm outer diameter thread and 11.5 TPI inclination.

Note: With water-based plate cleaning function. Remove the appliance drain plug and clean the dehumidifier if you will not be using the appliance for an extended period of time. Hold a cup under the drain plug when removing it to prevent the floor from getting wet.

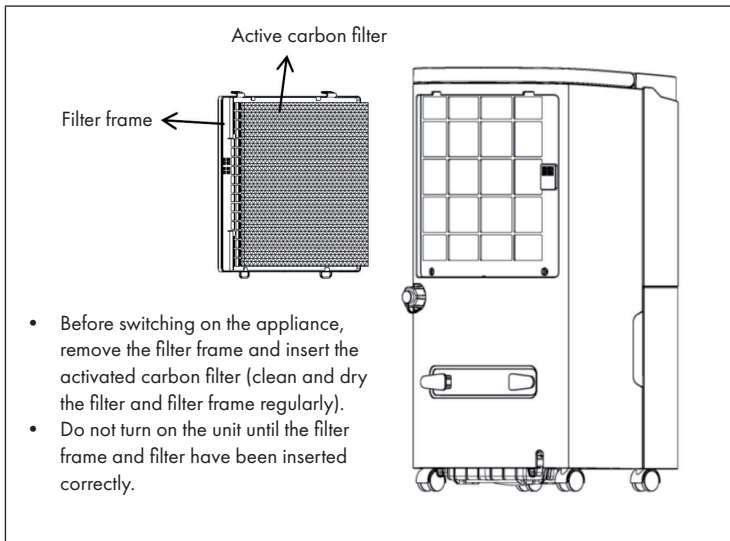


Note: The drain line should not be too long (a length of less than 60 cm is recommended). The end of the drain line should be in a lower position than the water outlet (at least 10 cm lower), otherwise there is a risk of leakage.

When the pump function is activated:



Before the start



COMMISSIONING AND OPERATION

Timer (set time to automatically switch off)

When the dehumidifier is in operation, press the TIMER key to adjust the time from 1 h - 24 h. If you press the button once, the time is set to 1 hour. Pressing the button several times increases the time by one hour. If you press the button again after 24 hours, the time starts at 1 again. If the time you set has elapsed, the appliance switches off automatically. If no button is pressed within 5 seconds after the setting is completed, the set time to switch off is confirmed. When the auto power off time has been set, the timer indicator light will usually illuminate.

Timer (Setting the Time to Auto Power On)

When the unit is in standby mode, the auto power on time can be set in the same way as the auto power off time (see above). If no button is pressed within 5 seconds after the setting is completed, the set time to power on is confirmed. When the auto power on time has been set, the timer indicator light will usually light up.


AUTO Mode

If you select the automatic mode, the compressor and fan will run if the indoor humidity is higher than 5% higher than the set target humidity. If the indoor humidity is less than 5% higher or lower than the target humidity, the compressor and fan will continue to run at the set speed. If the indoor humidity is more than 5% lower than the target humidity, the compressor shuts down, but the fan continues to run at the set speed. The factory-set humidity value is 50%.

Laundry


If you select this mode, the compressor will start regardless of relative humidity. The factory setting is for the fan to run at maximum speed in this mode. The speed of the air circulation can be adjusted using the speed button.

Clean function in the air dehumidifier

Press the  button (2) to activate the Clean function of the dehumidifier. The entire process takes approximately one hour:

1. The dehumidifier runs at high speed and releases air for more than 30 minutes.
2. The dehumidifier changes to low speed and continues running for about 20 minutes.

Interrupt the Clean function:

1. If you press the  button (2) again during the drying function, the Clean function is aborted and the unit resumes its original operating status.
2. Press the On/Off button (7) to cancel the clean function and place the appliance in standby mode.

Pump Function (SDZ1-50D-W)

If you press and hold the humidity button (5) for more than 3 seconds, the pumping function is activated/deactivated. (Connect a drain hose before activating the pumping function.)

WIFI AND SMART LIFE SET UP

Precautions

Smart Life is a centralised app for smart device management. With Smart Life, you can control your smart devices remotely and set up a complex chain of commands and automations. To connect this dehumidifier to a smartphone via Wi-Fi through the Smart Life app, follow the below steps.

Note: Ensure WiFi network is set to 2.4GHz.

- Download the Smart Life app by Tuya Inc from the Apple App Store or Google Play Store.
- Register for a Smart Life account.
- Log into the Smart Life app.
- On the Home page tap Add Device or the "+" symbol in the top right hand corner.
- Tap Large Home Appliances.
- Tap Dehumidifier.
- Plug in the appliance and ensure the power socket is turned on.
- Press the power button to turn on the appliance and then press the power button again to turn off the appliance and place it in standby mode.
- Press and hold the humidity button for three seconds to activate the appliance's WiFi pairing function. After three seconds the WiFi indicator light will begin to blink.
- In the Smart Life app, tap "Confirm WiFi Indicator Light Rapidly Blinking."
- Input your WiFi password and tap "Confirm."
- The Smart Life app will automatically connect to the appliance and show "Successfully Added Device."
- Return to the Smart Life app home page and tap the appliance's name.
- Use the controls to fully control the appliance and set desired settings etc.
- After successfully paired up with SmartLife app, the dehumidifier is ready to connect with Amazon Echo and Google Home.

Note:

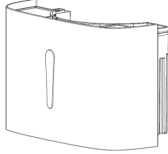

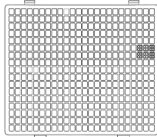
- When the device is online, it can be controlled using the Smart Life App.
- When the device is offline, it displays "offline" and can be remotely powered on.

CLEANING AND CARE

Precautions

- To avoid electric shock, unplug the appliance from the wall outlet before cleaning or servicing.
- Unplug the appliance from the wall outlet when not in use for an extended period of time.
- Do not clean the body of the appliance with chemical solutions such as alcohol, petrol, benzene, etc..

Cleaning the individual parts

		
<p>Clean the water tank and the water tank cover regularly with a slightly moistened cloth so that no mould can form inside.</p>	<p>Rub the surface of the appliance with a slightly moistened cloth. Do not use detergents or abrasive sponges to avoid damaging the plastic surface.</p>	<p>Clean the washable PP grid with warm or cold water at least once every two weeks. Do not use chemical solutions or hot water.</p>

TROUBLESHOOTING

Issue	Possible cause	Solution approach
The device is not running.	The mains plug is not plugged into the socket.	Insert the mains plug into the socket.
	The water tank may be full or incorrectly inserted.	Drain the water from the water tank or insert it properly.
	Room temperature is lower than 5°C or higher than 32°C.	This is normal at these temperatures and not a fault condition.
Dehumidifying the room air is not effective.	The room temperature or humidity is too low.	In the dry season, the dehumidifiability is reduced.
	The air inlet or outlet is blocked.	Clean the air inlets and outlets.
No air is blown out.	The ventilation grille is blocked.	Clean the ventilation grille.
Unusual noise during operation.	The dehumidifier is standing on an uneven surface.	Place the dehumidifier on a flat surface.
	The ventilation grille is blocked.	Clean the ventilation grille.
	A splashing noise can be heard.	This is normal. It is a circulating coolant.
Water escapes.	The connection between water outlet and drain pipe is loose.	Tighten the connection.
	The drain system is blocked.	Remove obstructions and straighten the drain line.
Frost occurs.	The ambient temperature is low.	This is a normal phenomenon. The dehumidifier has an automatic defrost function.

Frequently Asked Questions

Question	Reply
Why is there less water in the dehumidifier tank in winter?	In winter the temperatures are lower and the air is drier. The dehumidifying capacity therefore decreases compared to summer. This is not a fault of the unit.
Why does the unit not run or stops abruptly?	The dehumidifier's water tank may be full or incorrectly installed. Drain the water or insert the water tank correctly into the appliance.
	The ambient temperature may be too high or too low. The dehumidifier will only operate at temperatures between 5 and 32 °c and relative humidity between 30% and 80%. The optimal operating temperature is 16 - 32 °c.
Why does hot air come from the air outlet?	This dehumidifier draws in the room air and cools it down to a temperature below the condensation point so that the air condenses into drops of water that fall into the water tank. The dehumidified air is then reheated and exits the air outlet. This reduces energy consumption and accelerates dehumidification. The outlet of hot air is not a fault.

Error codes (only for SDZ1-50D-W)

Error code	Significance
FL	The water tank's full.
E1	The coil sensor detects anomalies.
E2	The room temperature sensor detects anomalies.
P1	The unit is in defrost mode (normal).
CL	The unit is in Clean mode (normal).
LC	The child lock has been activated.

DISPOSAL CONSIDERATIONS



If there is a legal regulation for the disposal of electrical and electronic devices in your country, this symbol on the product or on the packaging indicates that this product must not be disposed of with household waste. Instead, it must be taken to a collection point for the recycling of electrical and electronic equipment. By disposing of it in accordance with the rules, you are protecting the environment and the health of your fellow human beings from negative consequences. For information about the recycling and disposal of this product, please contact your local authority or your household waste disposal service.

This product contains batteries. If there is a legal regulation for the disposal of batteries in your country, the batteries must not be disposed of with household waste. Find out about local regulations for disposing of batteries. By disposing of them in accordance with the rules, you are protecting the environment and the health of your fellow human beings from negative consequences.

DECLARATION OF CONFORMITY

UK	REP	Prolinx Global LTD 27 Old Gloucester Street London, WC1N 3AX, UK
----	-----	--



This product is conform to the following European Directives:

2014/30/EU(EMC)
2014/35/EU(LVD)
2011/65/EU(RoHS)
2014/53/EU(RED)