

**ADJUSTABLE BED BASE
ASSEMBLY INSTRUCTIONS**



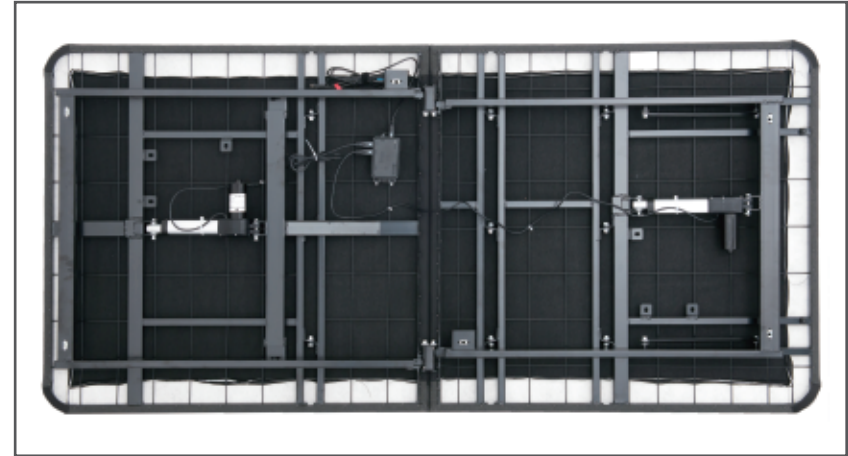
CONTENTS

Adjustable Bed Base Assembly Instructions.....	01
Adjustable Bed Base Wireless Remote.....	02
Adelectronics Quick Reference Guide.....	03
Adjustable Bed Base Wireless Remote.....	04
Adelectronics Quick Reference Guide.....	05
Adjustable Bed Base 2-year Limited Warranty.....	06

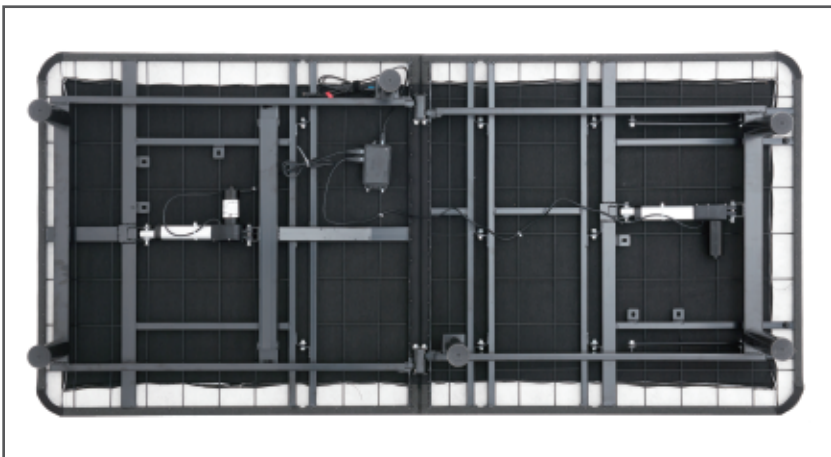
ADJUSTABLE BED BASE ASSEMBLY INSTRUCTIONS



STEP 1: Carefully take out the bed frame from packaging and open it as shown.



STEP 2: Cut all zip ties and take out corner legs from box.

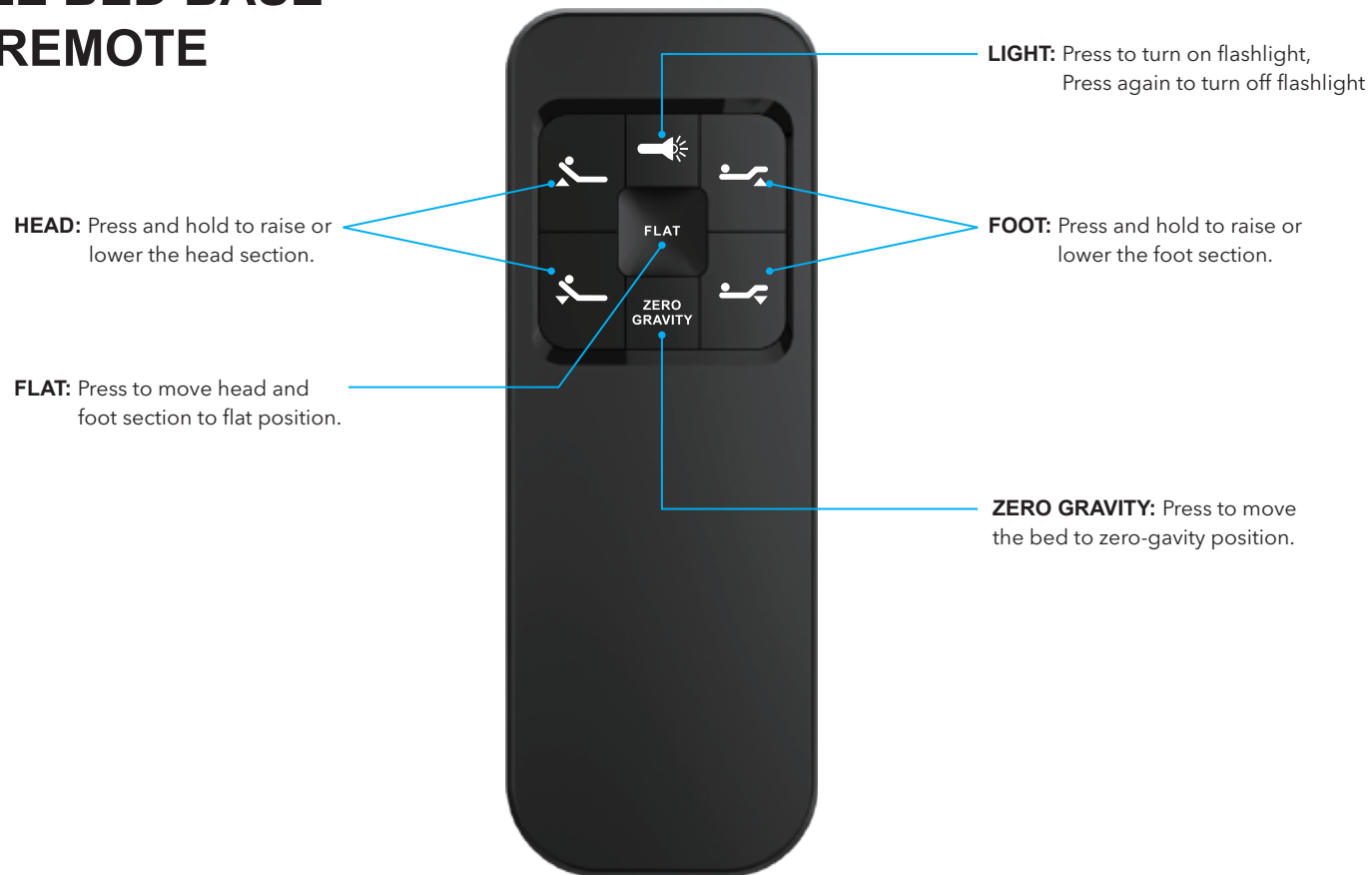


STEP 3: Attached the corner legs, rotate the end bolt into the hole in the corner brackets and tighten it.



STEP 4: Insert the mattress retainer bar into the grommets as shown.

ADJUSTABLE BED BASE WIRELESS REMOTE



HINT: To sync, hold all three buttons at the same time.



SYNCING ONE REMOTE:

Each bed frame comes factory synced to its own remote. If not synced follow these instructions:

Step 1:

Press and hold head up Δ , foot up Δ and pairing button on the cord of control box simultaneously for 3 seconds.

Step 2:

Once you hear a beep that will indicate that the remote is synced.

SYNCING TWO SPLIT BASES

Option 1 (REMOTE)

Step 1: Plug bed "A" and bed "B" and make sure "A" remote was already synced to bed "A".

Step 2: Take the "A" remote and sync it to bed "B" as sync instruction.

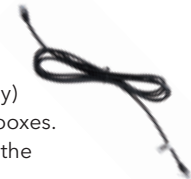
Step 3: The both bases should now be controlled by "A" remote.

Option 2 (SYNC CABLE)

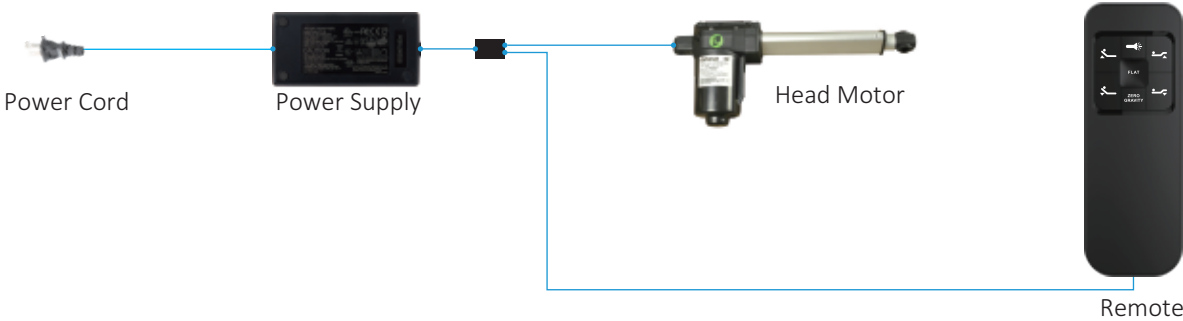
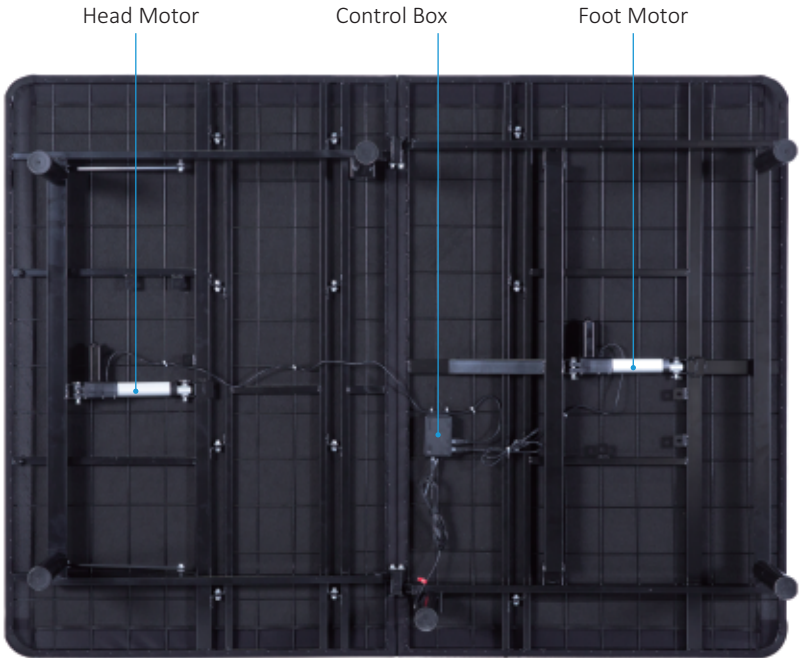
Step 1: Plug bed "A" and bed "B" and make sure bed was synced to its own remote.

Step 2: Plug Sync Cable (included with split bases only) into the "SYNC" input on the each of control boxes.

Step 3: The both bases should now be controlled by the one of remotes.



ADELECTRONICS QUICK REFERENCE GUIDE



ADJUSTABLE BED BASE WIRELESS REMOTE



WARNING

- Excessive use of the massage motors, over 30 minutes at a time, will cause the motor to shut down and possibly overheat.
- Do not use massage for more than 30 minutes at a time.
- Turn massage back on after 30 minutes rest to prevent damage to the motors or the adjustable base.

HINT: To sync, hold all three buttons at the same time.



SYNCING ONE REMOTE:

Each bed frame comes factory synced to its own remote. If not synced follow these instructions:

Step 1:

Press and hold head up Δ , foot up Δ and pairing button on the cord of control box simultaneously for 3 seconds.

Step 2:

Once you hear a beep that will indicate that the remote is synced.

SYNCING TWO SPLIT BASES

Option 1 (REMOTE)

Step 1: Plug bed "A" and bed "B" and make sure "A" remote was already synced to bed "A".

Step 2: Take the "A" remote and sync it to bed "B" as sync instruction.

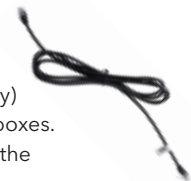
Step 3: The both bases should now be controlled by "A" remote.

Option 2 (SYNC CABLE)

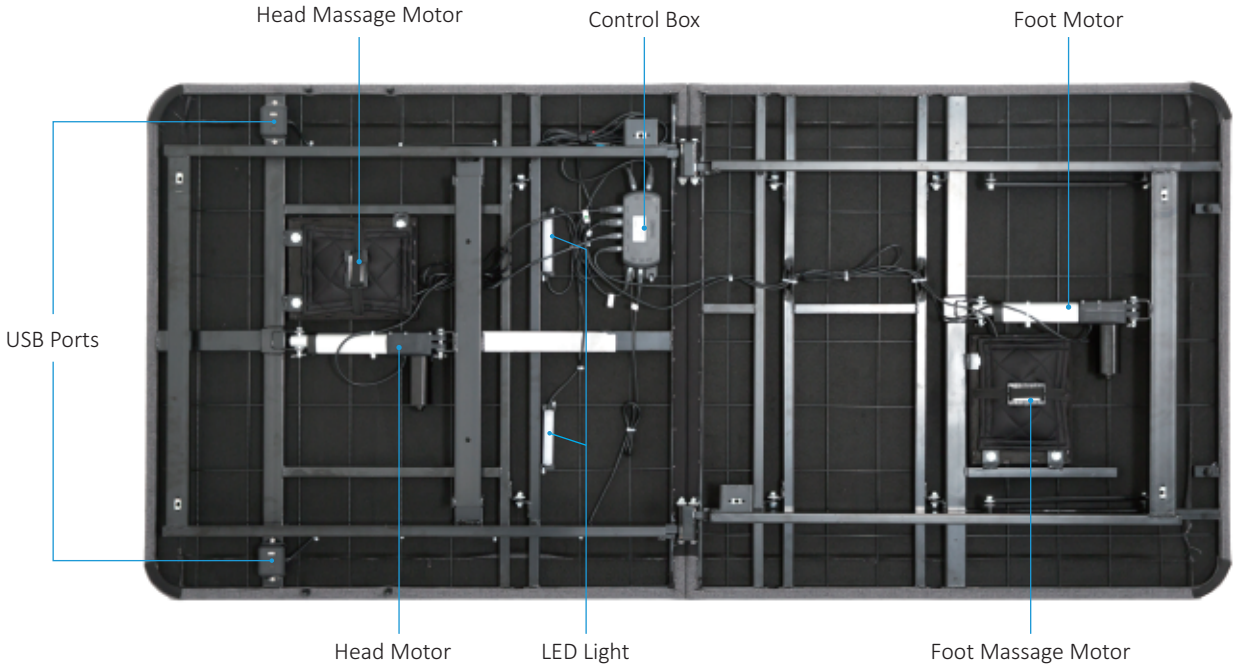
Step 1: Plug bed "A" and bed "B" and make sure bed was synced to its own remote.

Step 2: Plug Sync Cable (included with split bases only) into the "SYNC" input on the each of control boxes.

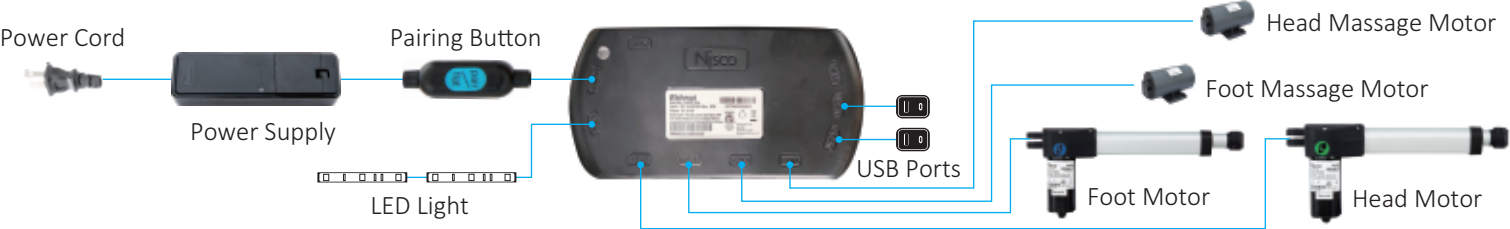
Step 3: The both bases should now be controlled by the one of remotes.



ADELECTRONICS QUICK REFERENCE GUIDE



Remote



ADJUSTABLE BED BASE 2-YEAR LIMITED WARRANTY

LIMITED WARRANTIES: The following limited warranties apply to new Adjustable Base and are extended only to the original retail purchaser of the Adjustable Base Product. These limited warranties are non-transferable. The "adjustable base" does not include the mattress. "Warranty Commencement Date" means the date you purchased a new and unused your adjustable base. We warrants this adjustable base to you on the terms and over the reducing periods of time set out below. All warranty claims require notice from You to be given to us in the manner set out below, and to be received by our inside the applicable warranty time period.

2 YEAR LIMITED WARRANTY - FULL COVERAGE OF PARTS: Your Adjustable Base is warranted against defects in the workmanship or materials for a period of two (2) years from the Warranty Commencement Date. Electronics, electrical components, drive motors and massage motors are included. Upon notice during the first year from the warranty commencement date, We will send replacement parts (at no cost to the purchaser) for any defective part to the purchaser. This two (2) year warranty shall not apply if purchaser does not return any and all defective parts to us within 15 days of purchaser's receipt of replacement part. Purchaser shall bear all service, transportation, labor, and shipping costs related to the delivery and/or replacement of the defective part.

WARRANTYLIMITATIONS- EXCLUSIONS: This warranty does not apply; (a) to any damage caused by You; (b) if there has been any repair or replacement of adjustable base parts by an unauthorized person; (c) if the adjustable base has been mishandled (whether in transit or by other means), subjected to physical or electrical abuse or misuse, or otherwise operated in any manner inconsistent with the operation and maintenance procedures outlined in the Owner's Manual and this warranty; (d) to damage to mattresses, fabric, or cables; (e) if there has been any modification of the adjustable base without prior written consent by us; or (f) to costs for unnecessary service calls, including costs for in-home service calls solely for the purpose of educating You about the adjustable base or finding a satisfactory power connection. Any repairs to or replacement of your adjustable base or its components under the terms of this limited warranty do not extend the applicable warranty from the Warranty Commencement Date. The decision to repair or to replace defective parts under

this warranty shall be made, or cause to be made, by us at its option and in its sole discretion. Repair or replacement shall be the sole remedy of the Purchaser. There shall be no liability on the part of us for any special, indirect, incidental, or consequential damages or for any other damage, claim, or loss not expressly covered by the terms of this warranty. This limited warranty does not include reimbursement for inconvenience, removal, installation, setup time, loss of use, shipping, or any other costs or expenses. Additionally, this warranty applies under conditions of normal household uses and does not apply to defects resulting from negligence, misuse, accidental or commercial/ rental usage. All implied warranties, including implied warranties of merchantability and fitness for a particular purpose, are limited to the duration of the express warranties on this product. The warranties and remedies set forth in this limited warranty are your sole and exclusive remedies and our entire liability for any breach of these limited warranties. In no event will We be liable to you for any damages, including incidental or consequential damages, arising out of the inability to use this product. Some states do not allow limitations on how long an implied warranty lasts or the exclusion or limitation of incidental or consequential damages, so the above limitation or exclusion may not apply to you. This warranty gives you specific legal rights and you may also have other rights which vary from state to state. All warranties are applicable to the original consumer purchaser only, and do not extend to any subsequent owner or other transferee of the product nor to any commercial and/or non-residential users.

WARRANTY CLAIMS PROCEDURE: Should a warranty claim arise, the original purchaser shall contact us for a Warranty Claim Form and Instructions. The original purchaser shall complete the Warranty Claim Form, clearly detailing the defect, and email along with a copy of original sales receipt for the Product to us. Warranty Claim Forms that are incomplete or sent without a copy of original sales receipt will not be processed and will be returned. Upon receipt by us of the completed Warranty Claim Form and the original sales receipt, our quality control department will verify the defect and/ or the applicability of this Limited Warranty thereto. In the event that this Limited Warranty is applicable, a replacement product of equal or greater value will be sent to the customer. The original purchaser will be responsible for shipping, handling and processing fees. No monetary refunds and/or credits will be issued. **Please retain this warranty and your original invoice for two (3) years.**