

(A)

Cam Lock &  
Dowel x 27



(B)

Wooden Dowel x 14



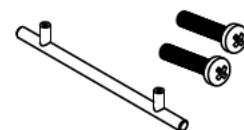
(C)

14x3.5mm  
screw x 60



(D)

Back Panel Connector x 1



(E)

Handle x 2



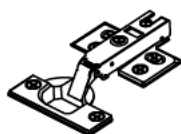
(F)

Glide x 4



(G)

Nails x 50



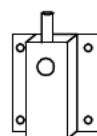
(H)

Hinge x 6



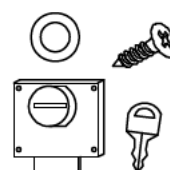
(I)

Shelf  
Support x 12



(J)

Latch x 2



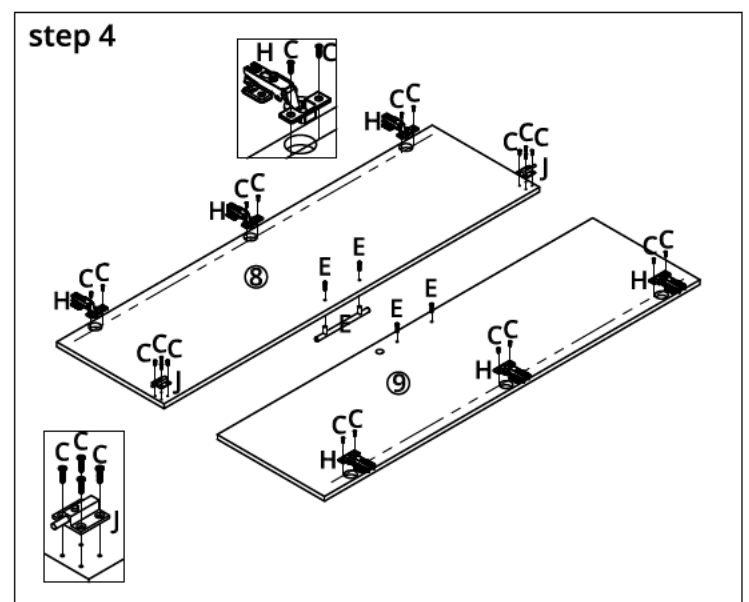
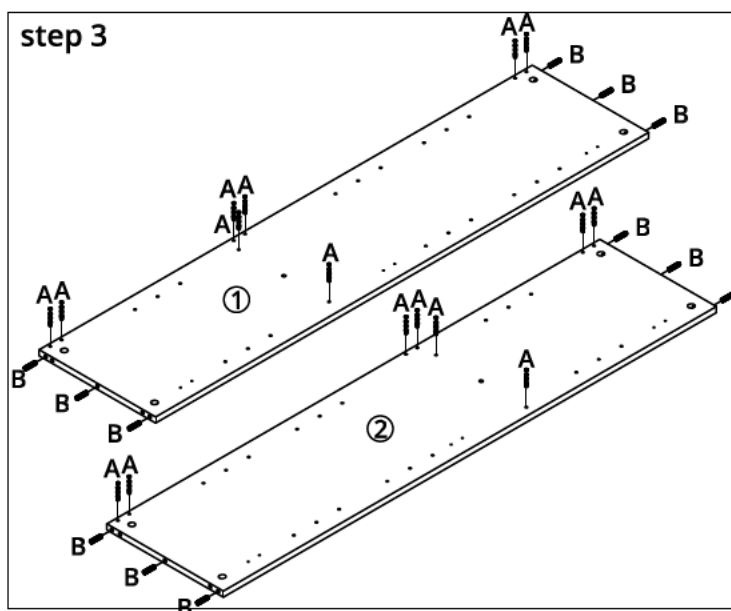
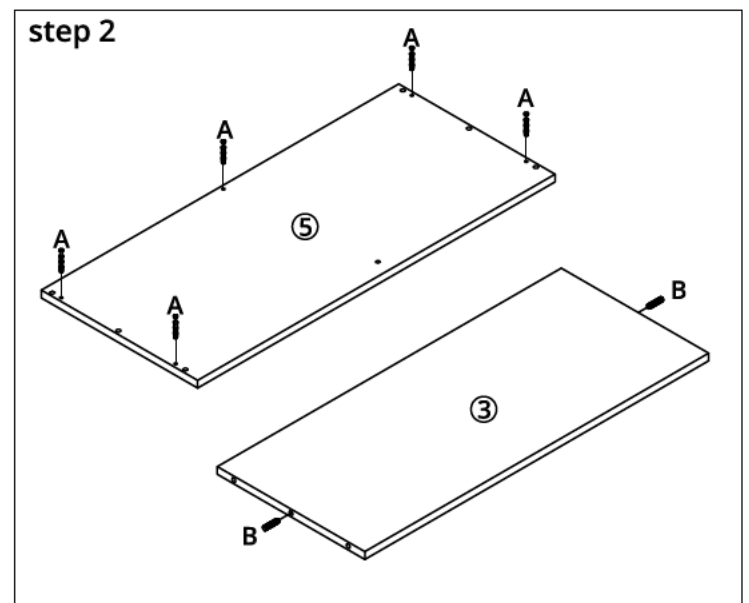
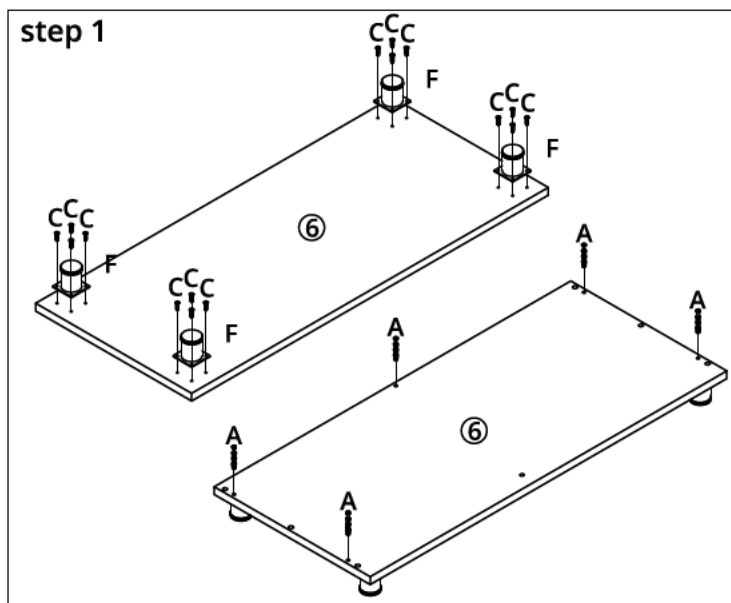
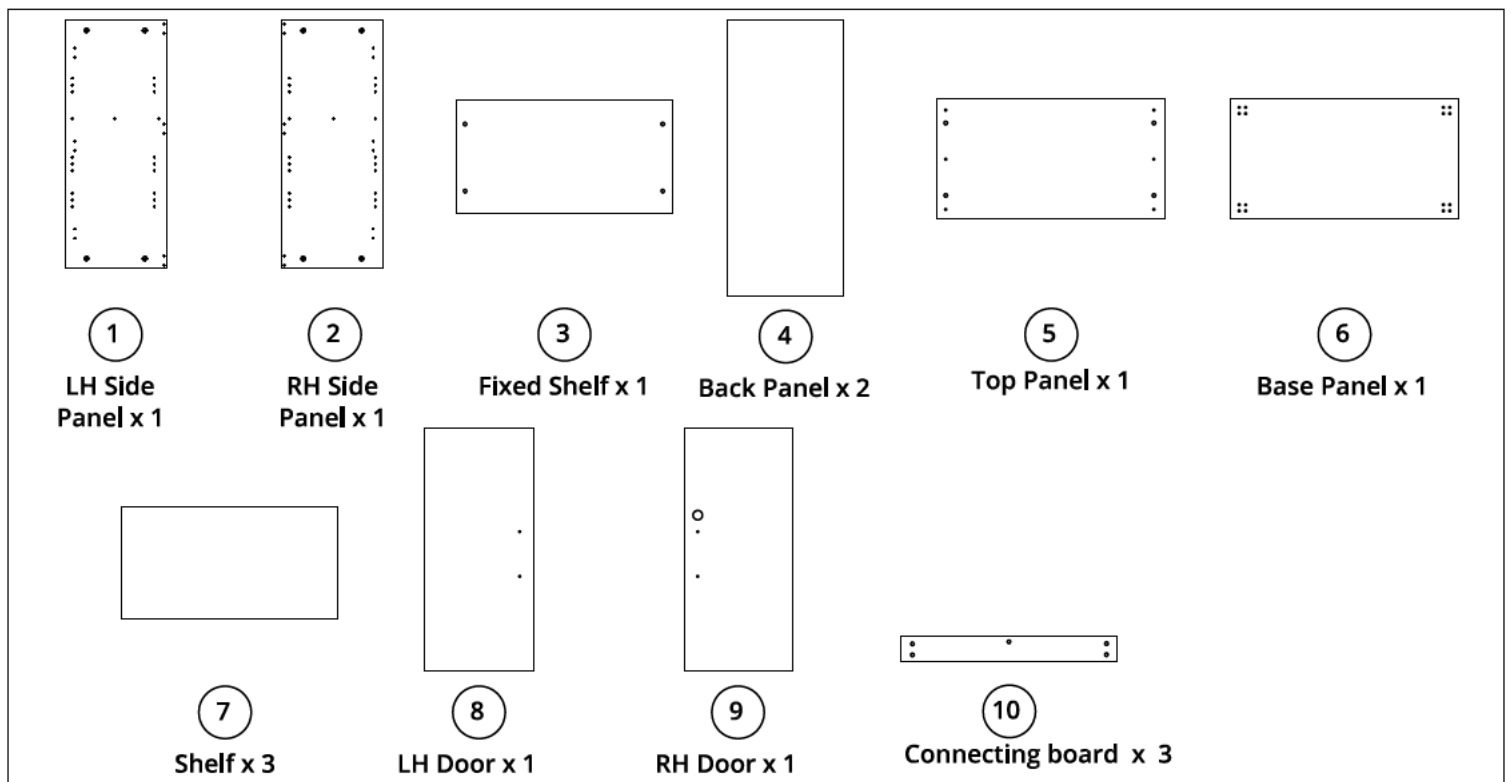
(K)

Lock x 1

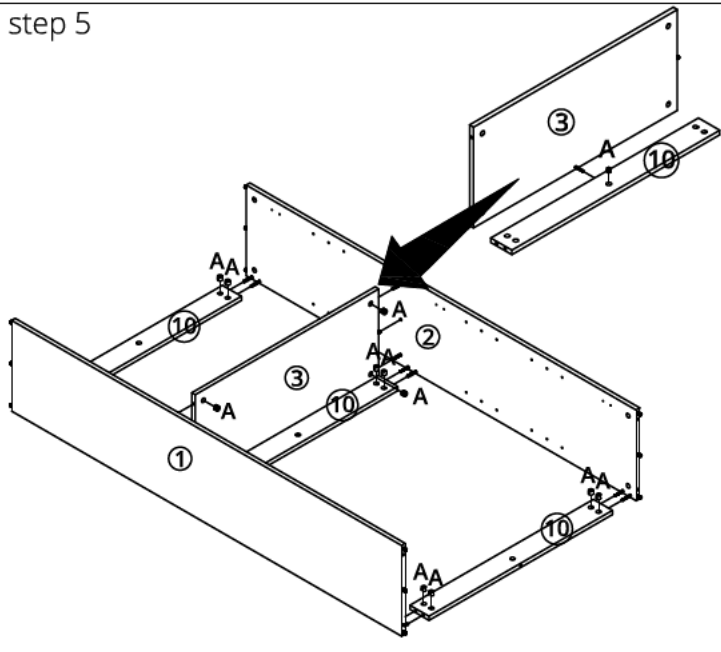


(L)

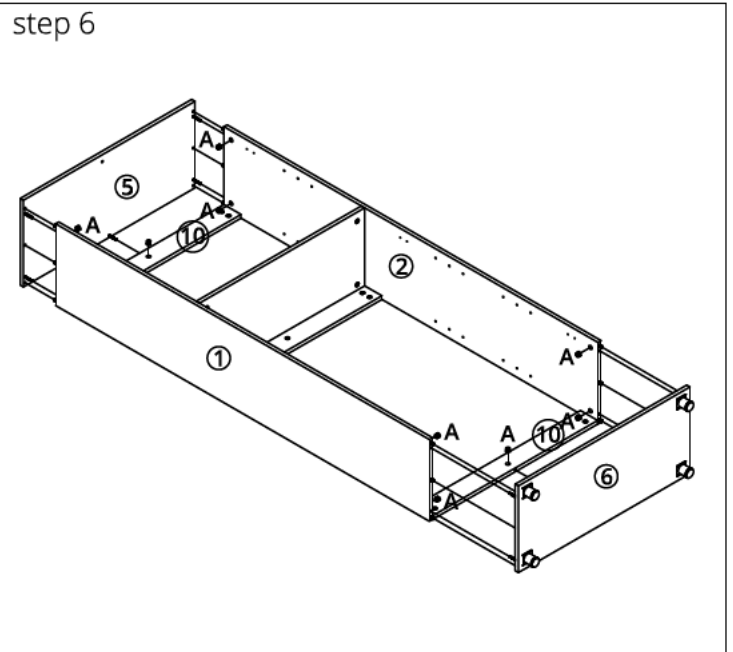
Wall Fixing x 2



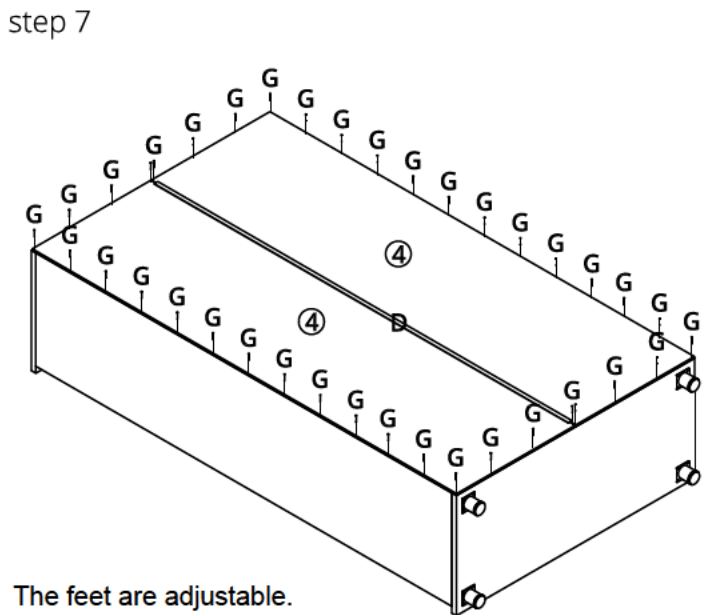
step 5



step 6

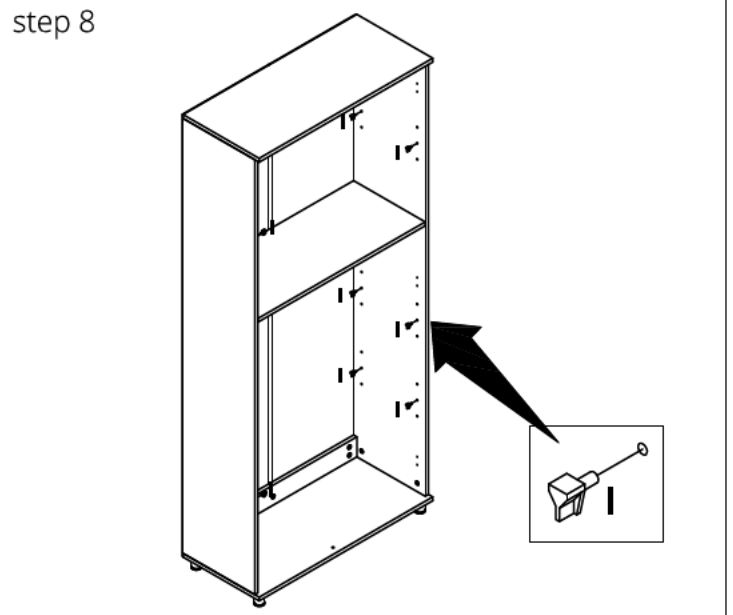


step 7

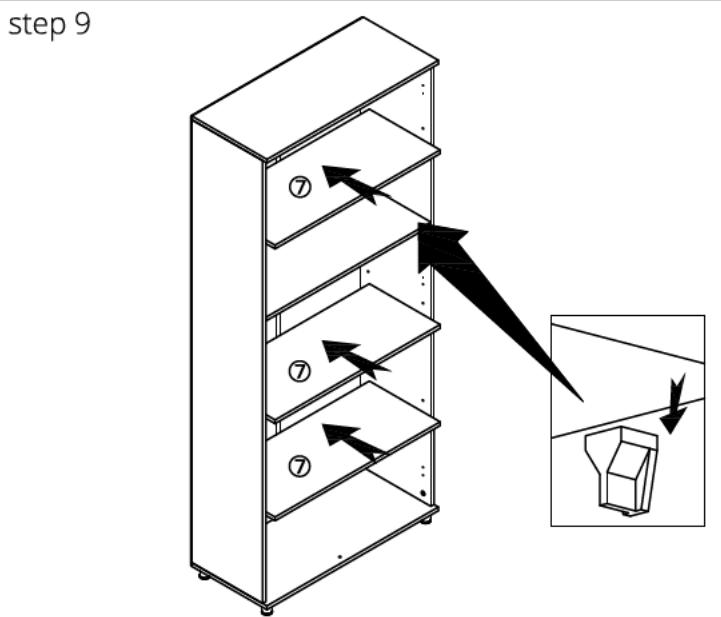


The feet are adjustable.  
If the ground is uneven after the assembly is completed,  
the feet can be adjusted

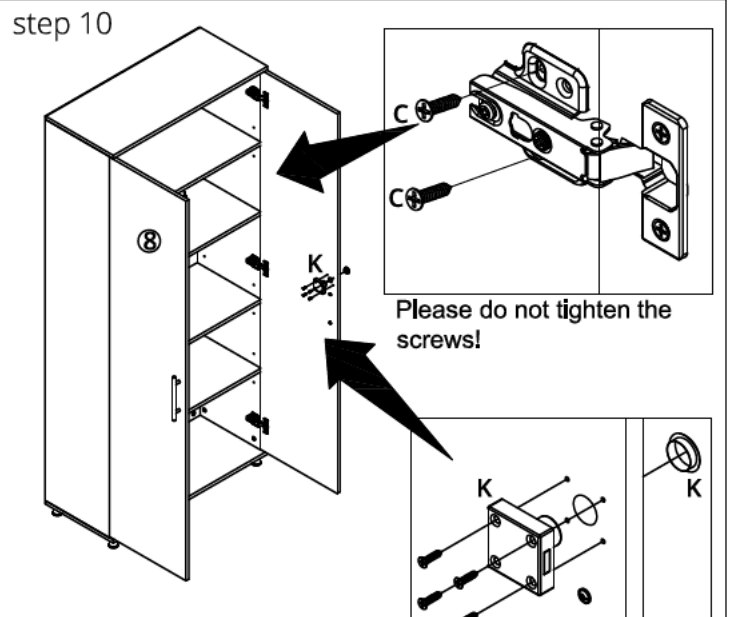
step 8



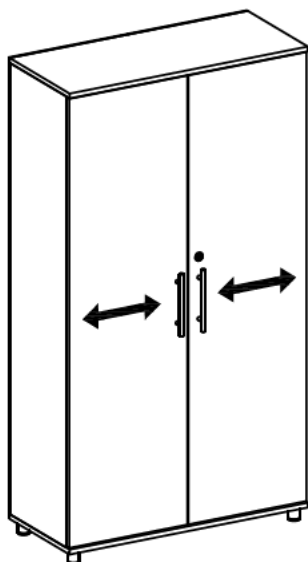
step 9



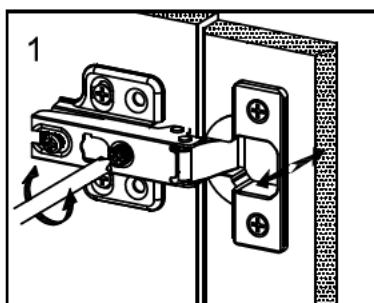
step 10



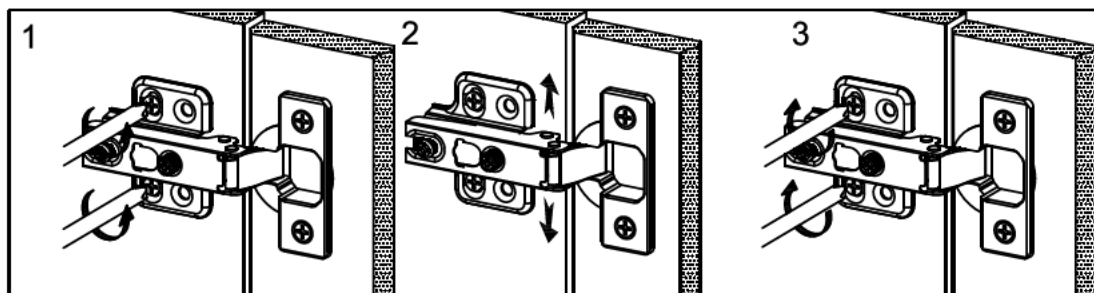
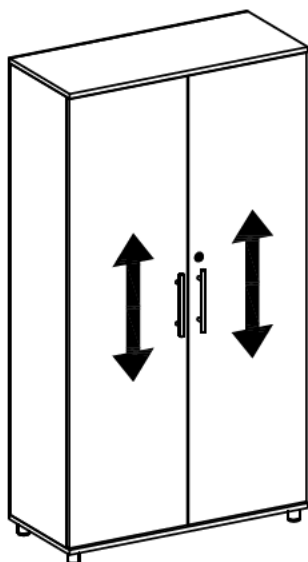
step 11



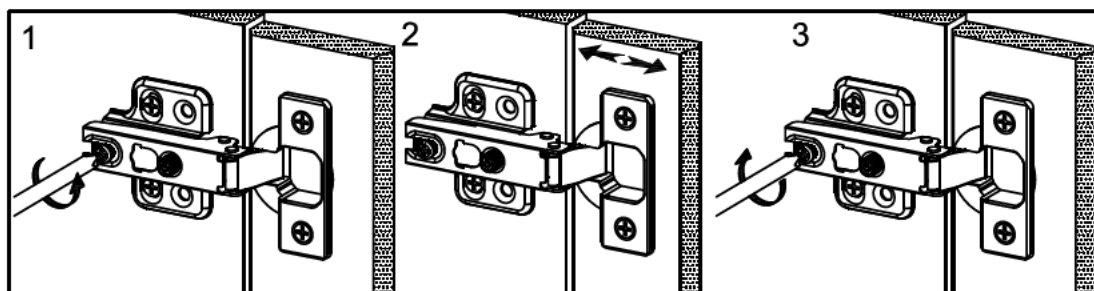
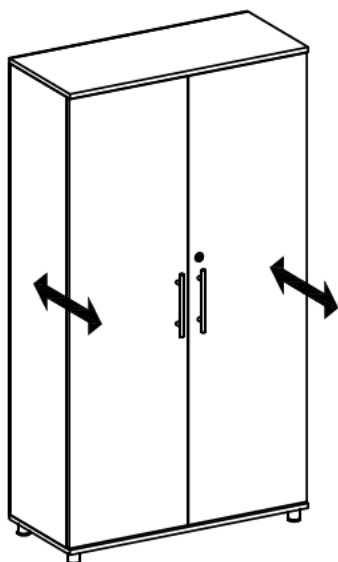
Adjusting the doors (Adjusting the hinges)



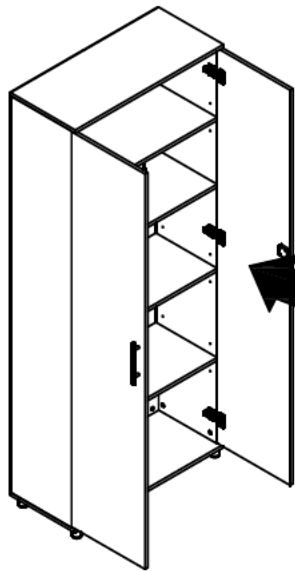
step 12



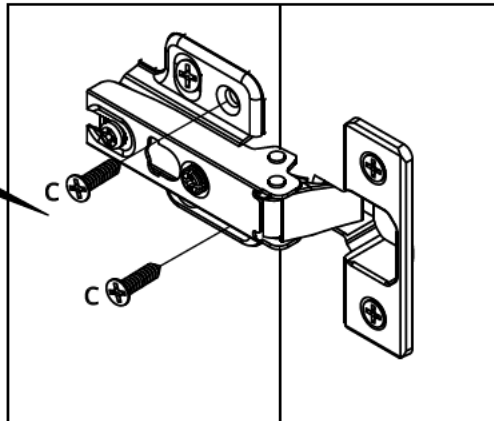
step 13



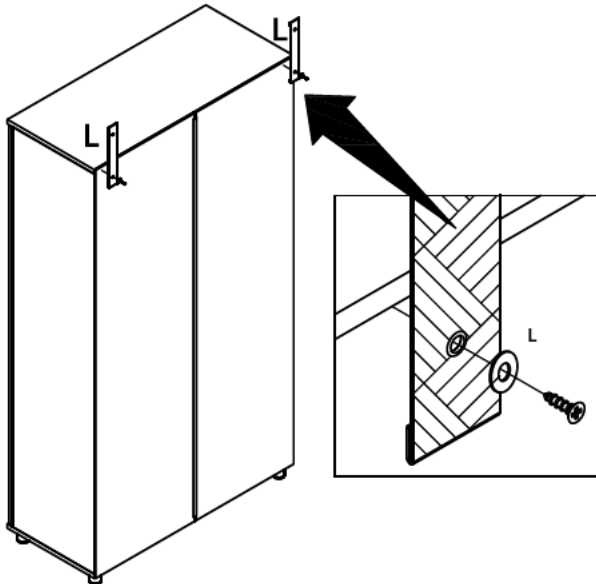
step 14



Before screwing the "C" screws make sure your doors are well adjusted.



step 15



step 16

