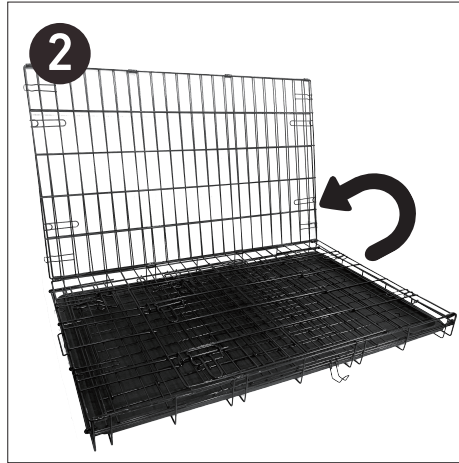


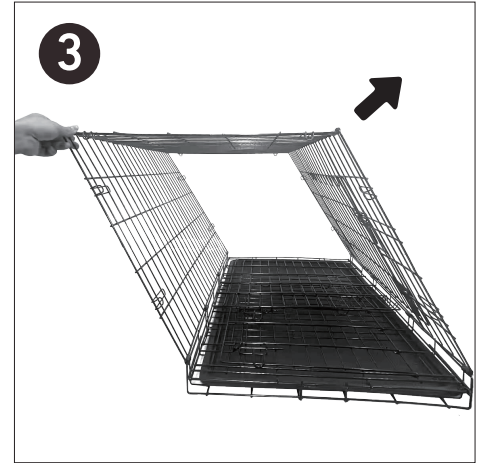
# Assembly Instructions



**Step 1** Open Latch.



**Step 2** Fold to open.



**Step 3** Pull up to the top right.



**Step 4** Pull side panels upward and buckle to the top of the cage.

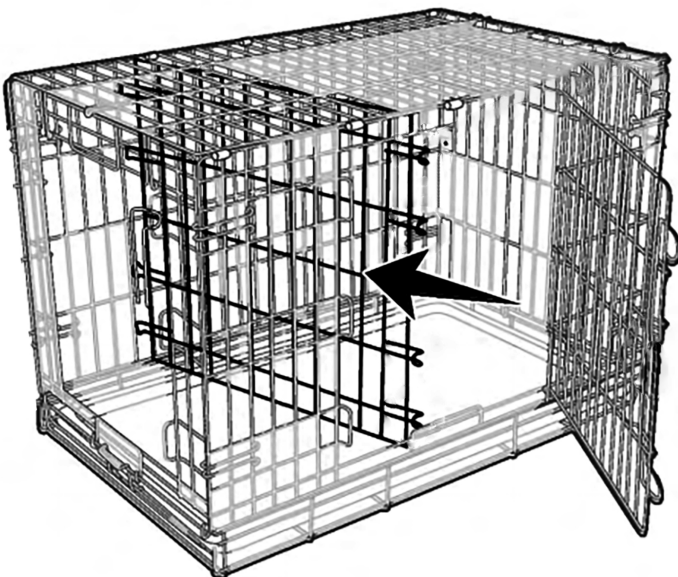


**Step 5** Complete.



When you need to clean the cage, you can removing the Plastic Pan.

Use the divider panel to adjust the cage space to fit the pet's body size



Attach the hooks on the divider to the two side panels.



**WARNING : Please note;** for safety purposes remove any collars, tags, leads or anything else that may be on your pet before placing them in the crate.

Failure to follow these instructions may result in serious injury or death of yourself and people around you.

Some of the part is heavy and/or has the shape edge, please install it carefully to avoid hurting you and people around you.