



# IRIS BIANCA PEARL WHITE POLISHED MARBLE PEARL AND GLASS WATERJET MOSAIC TILE



The Bianca Pearl Waterjet Mosaic Tile combines classic white marble with shimmering glass and mother-of-pearl in a floral-inspired composition. Luminous tones create subtle depth, contrast, and movement across the surface. Polished to enhance the stone's natural luster, this mesh-backed mosaic brings a refined statement to residential and commercial walls (not suitable for floor use).

## COLORS



Jade Green



Macauba Blue



Onyx Pink



Pearl White

## SPECIFICATIONS

Colorway  
White, Pearl White

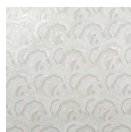
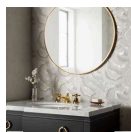
Commercial  
Wall

Finish  
Polished

Material  
Paper Onyx, Mother of Pearl, Crystal Glass

Residential  
Wall

## PRODUCT GALLERY



## DETAILED SPECS

### Available Sizes

Mosaic

### Coverage

0.87

### Frost Resistant

No

### Location

Backsplash, Bathroom, Indoor, Kitchen

### Look

Waterjet

### Patterns

Floral

### Recommended Grout Joint

Match Sheet Joint

### Size

11.12" x 11.24"

### Stone Type

Onyx

### Style

Contemporary, Traditional

### Tile Thickness

8 mm

### Tile Use

Backsplash, Bathroom Wall, Kitchen Wall, Wall Tile

### Weight

3.5 lbs

## DIMENSIONS

### Sample Size

4" x 8"

## IRIS



The Iris collection of waterjet mosaics celebrates the delicate interplay of bold and pastel marbles in floral-inspired compositions. Crafted from premium and luxury materials, each mosaic brings luminous texture and refined elegance to residential and commercial walls.

