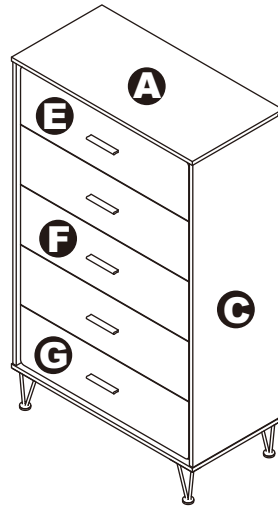


# ASSEMBLY INSTRUCTIONS

## 5-DRAWERS CHEST



# 5-DRAWERS CHEST

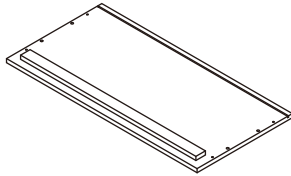


## DIMENSIONS

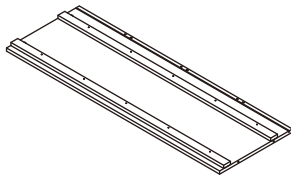
Width - 31.5"  
Depth - 15.75"  
Height - 52.42"

## PARTS LIST

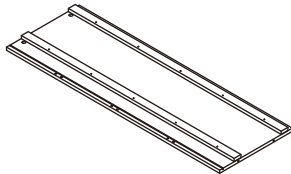
**A** X1



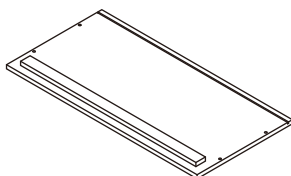
**B** X1



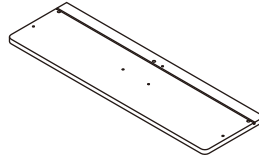
**C** X1



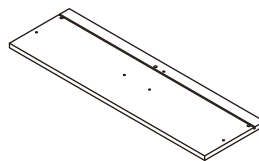
**D** X1



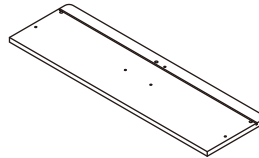
**E** X1



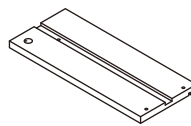
**F** X3



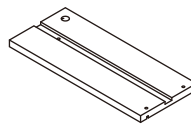
**G** X1



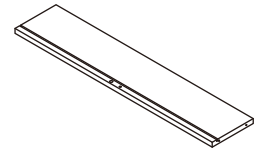
**H** X5



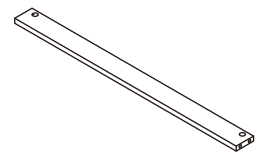
**I** X5



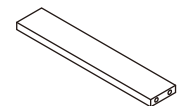
**J** X5



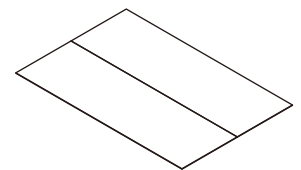
**K** X3



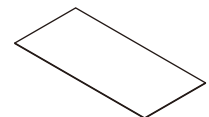
**L** X5



**M** X1



**N** X5



## HARDWARE LIST

**1** X30



**2** X30



**3** X30



**4** X4



**5** X20



**6** X10



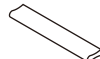
**7** X20



**8** X10



**9** X5



**10** X10



**11** X4



**12** X4



**13** X16



**14** X4

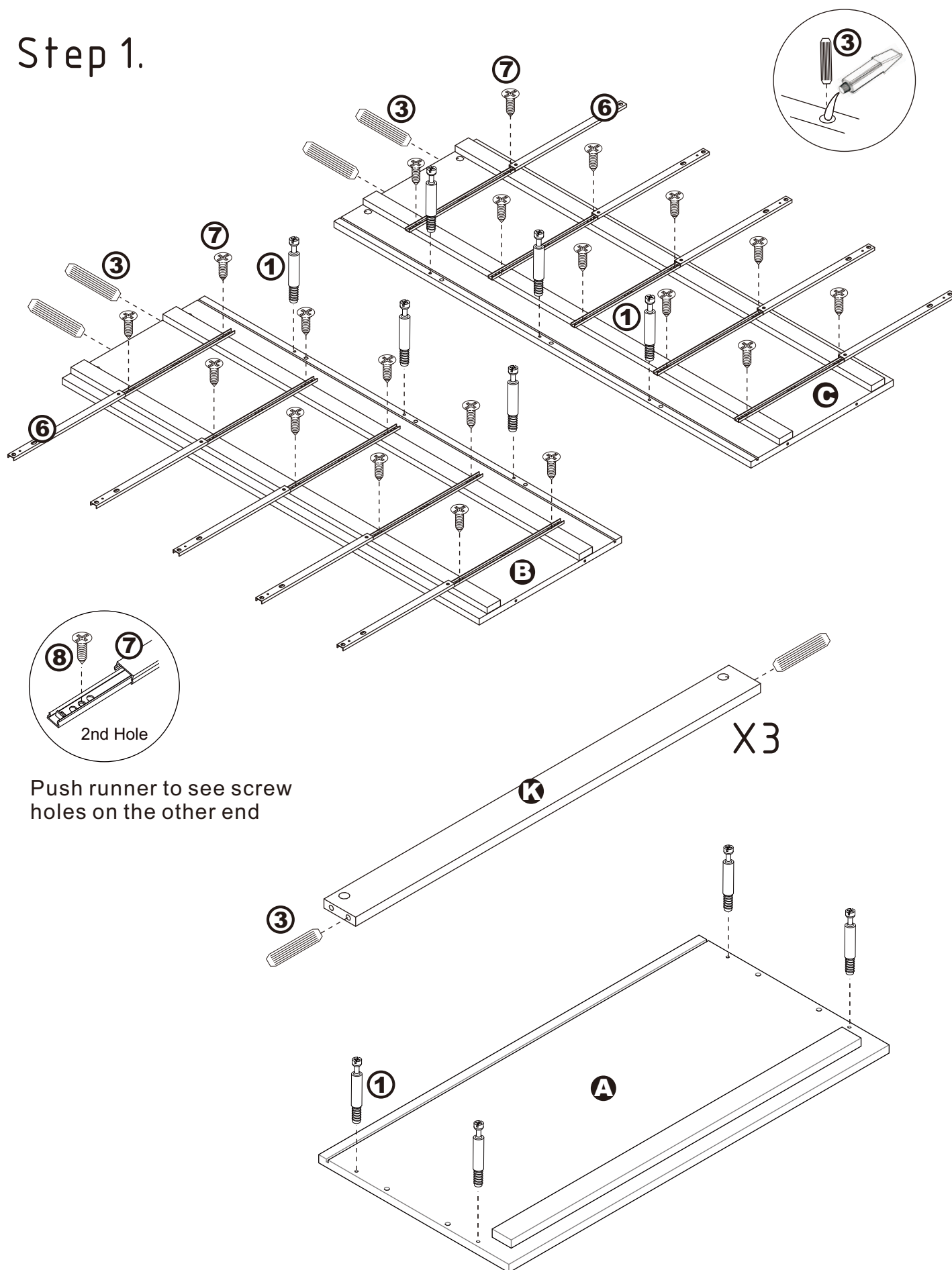


**15** X4



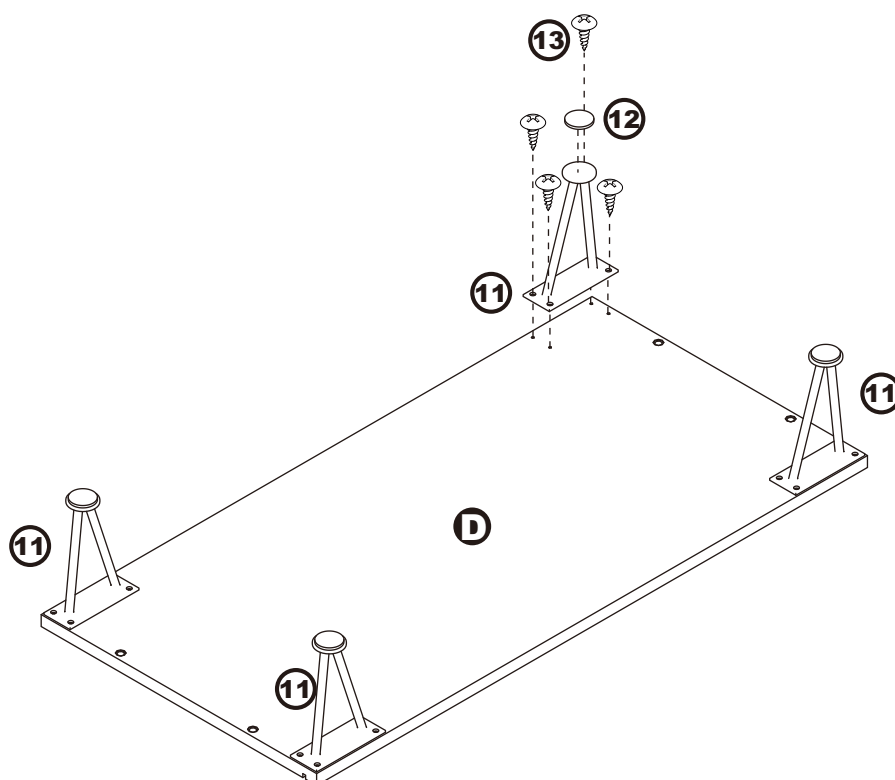
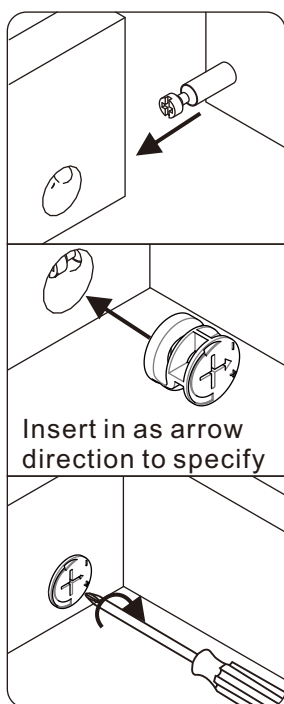
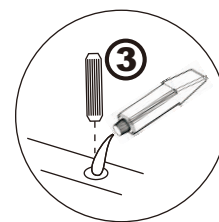
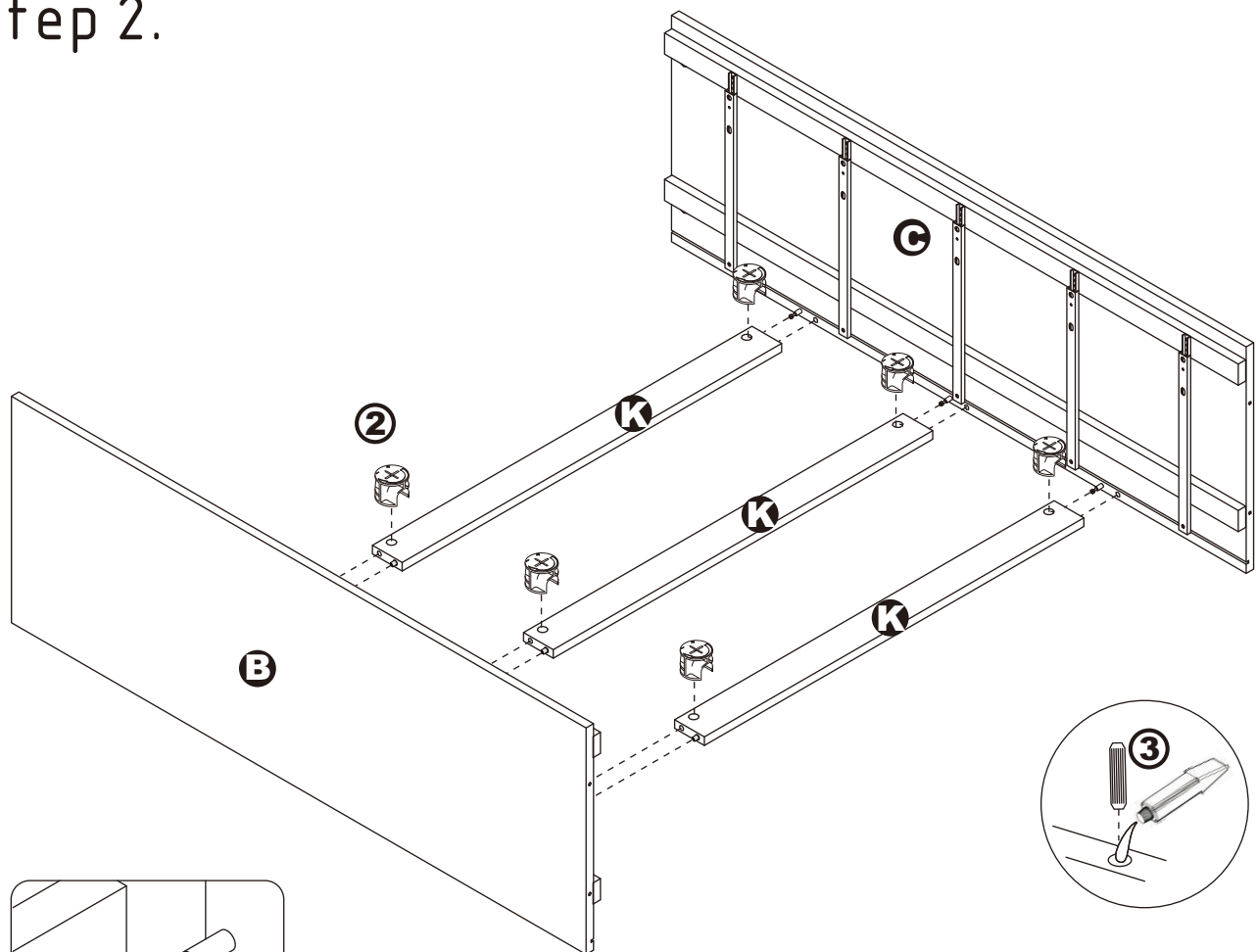
# ASSEMBLY INSTRUCTIONS

## Step 1.



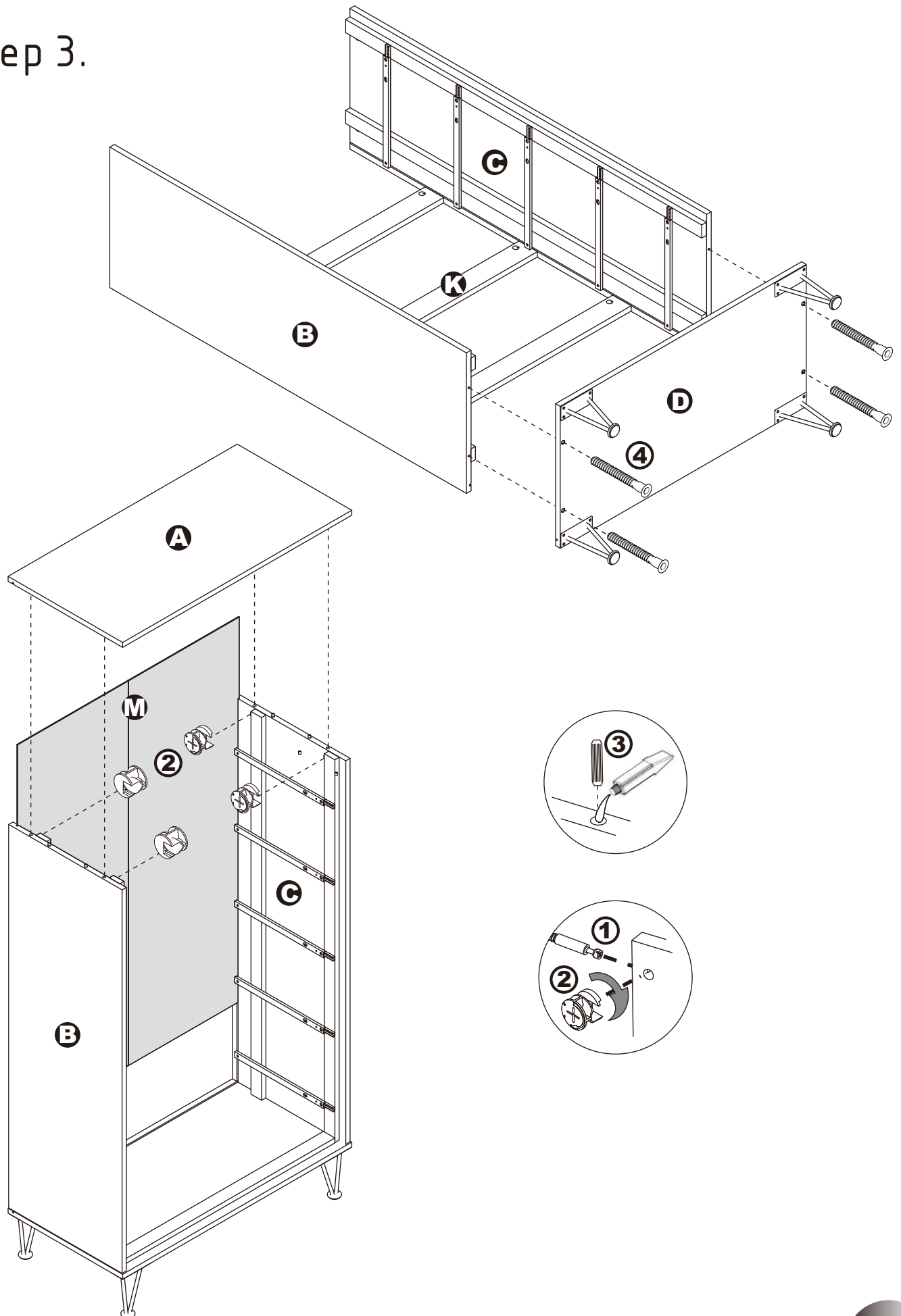
# ASSEMBLY INSTRUCTIONS

## Step 2.



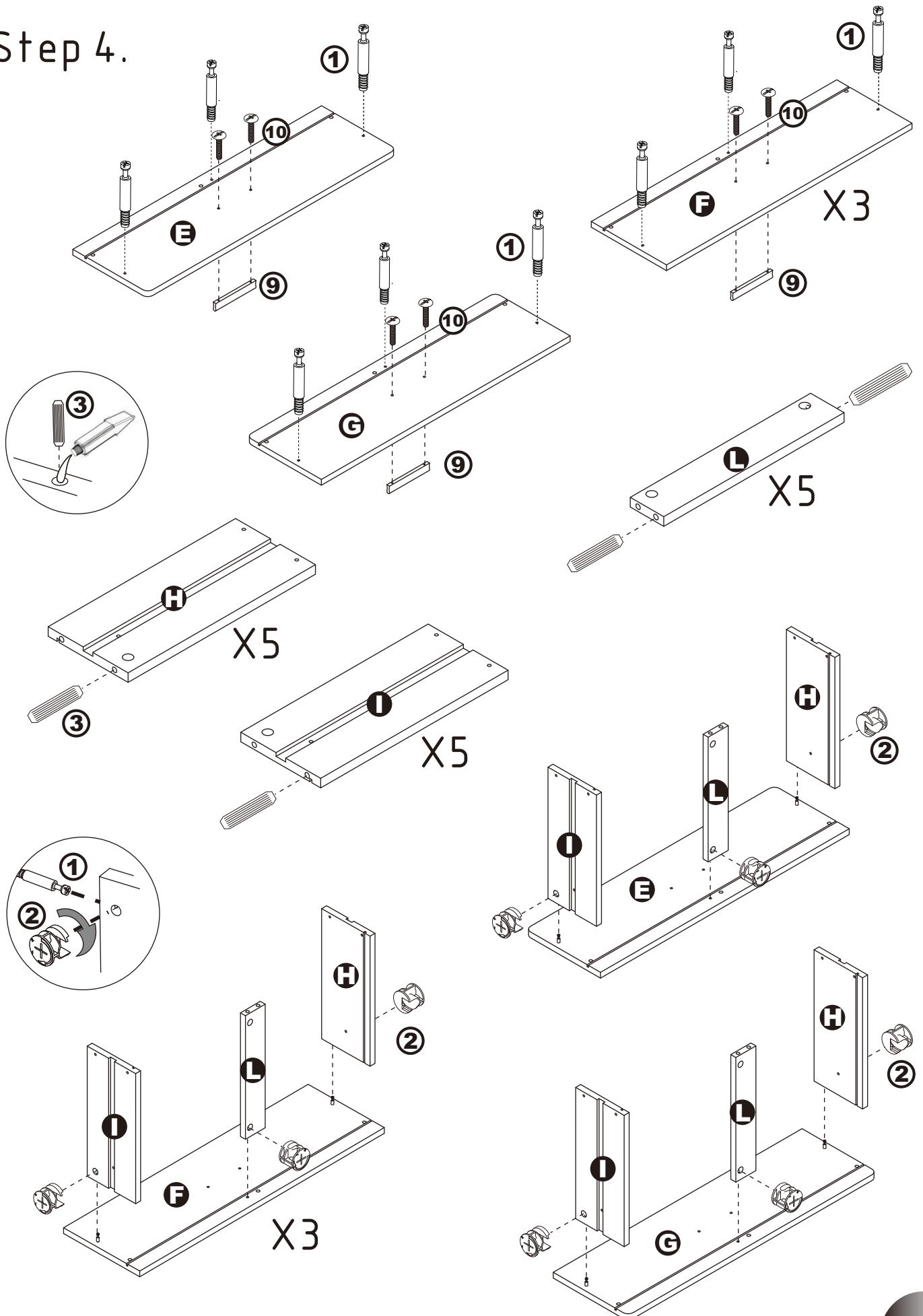
# ASSEMBLY INSTRUCTIONS

## Step 3.



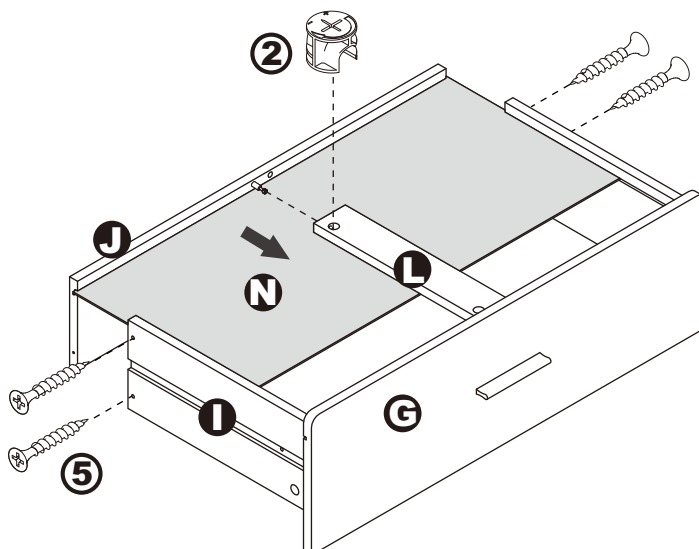
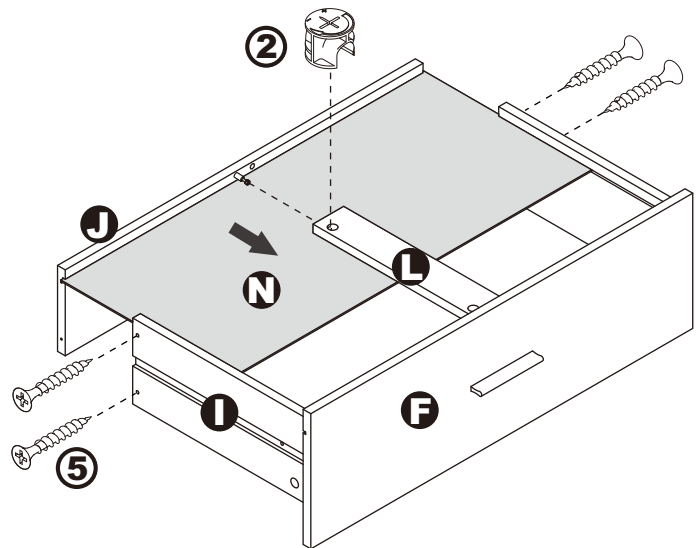
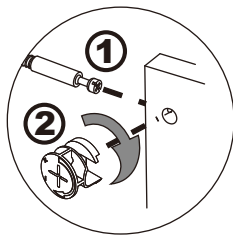
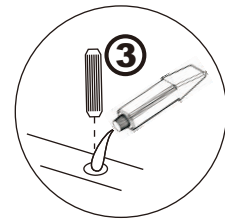
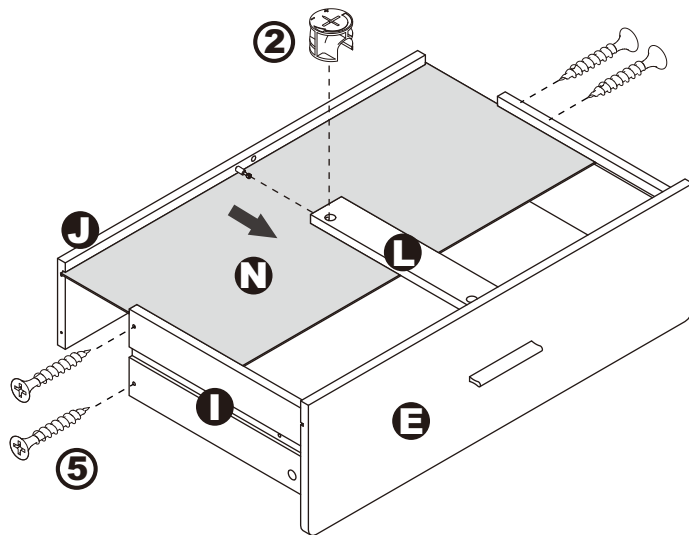
# ASSEMBLY INSTRUCTIONS

## Step 4.



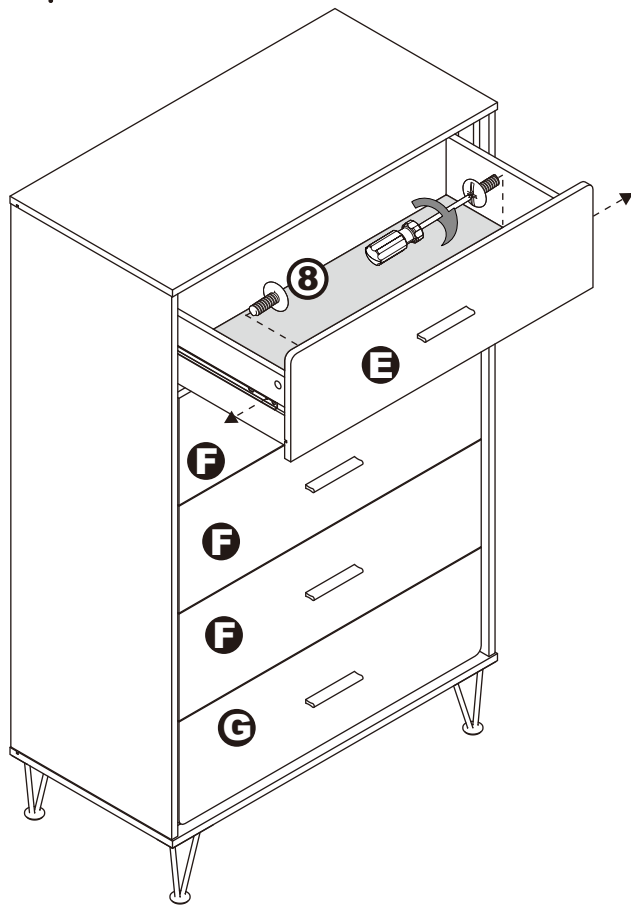
# ASSEMBLY INSTRUCTIONS

## Step 5.

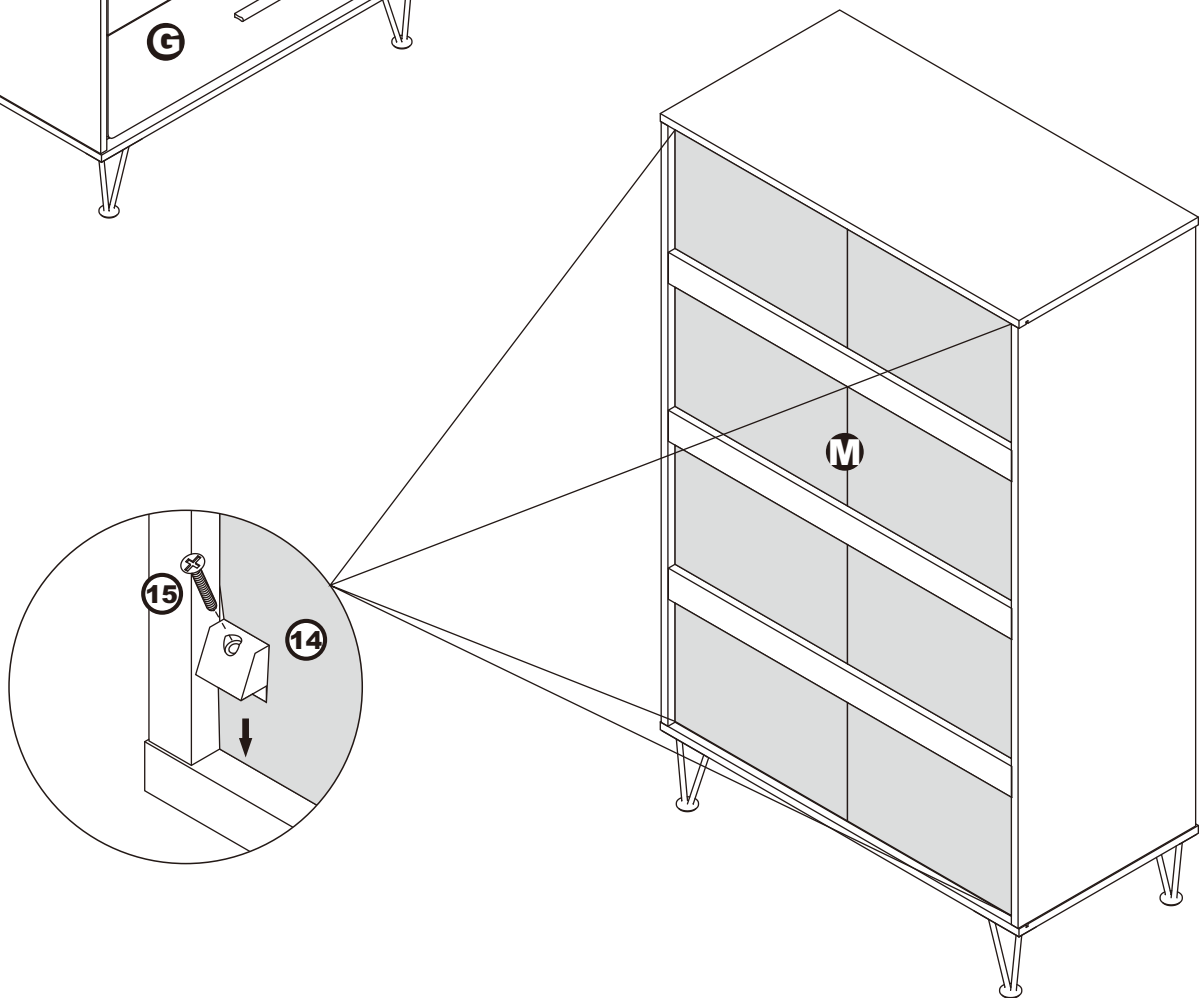


# ASSEMBLY INSTRUCTIONS

## Step 5.



Extend the two outer slides of the runners so that they could align with the sides of the drawer. Make sure the pre-drilled holes from the drawer align with the screw holes of the outer slides. Secure two screws from the inside of the drawer using a Phillips screwdriver to tighten them to the outer slides.



## ASSEMBLY IS COMPLETED

Make sure the product is rested on a flat surface and does not feel loose or wobbly. If it does, double check that the bolts/screws are secured and properly tightened.