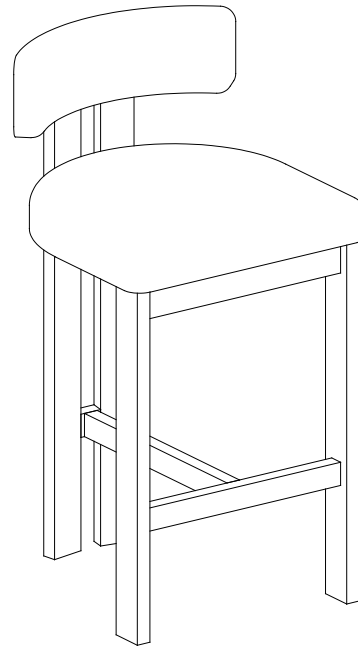


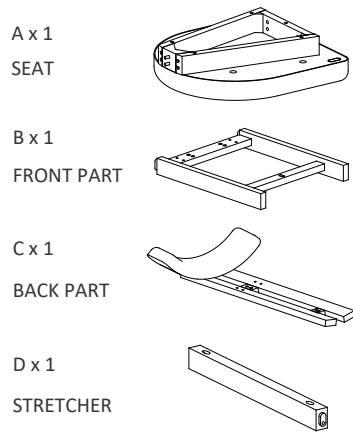
BAR STOOL

Assembly Instructions

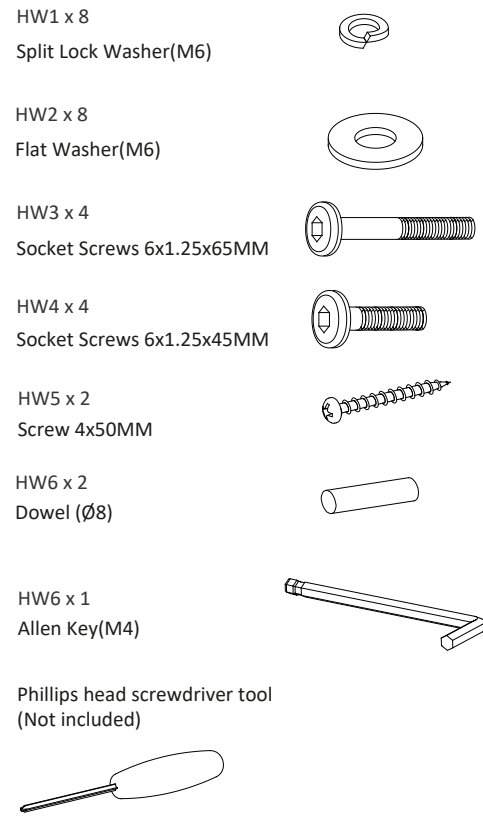


Every thing we make is incredibly simple to set up, including your new barstool. You won't need any additional tools.

Parts List

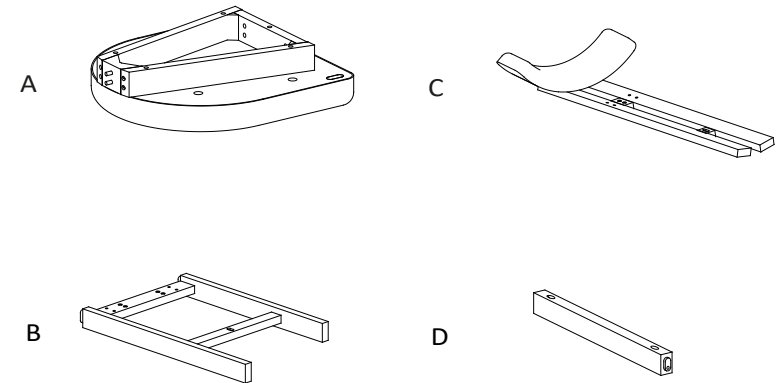


Hardware List



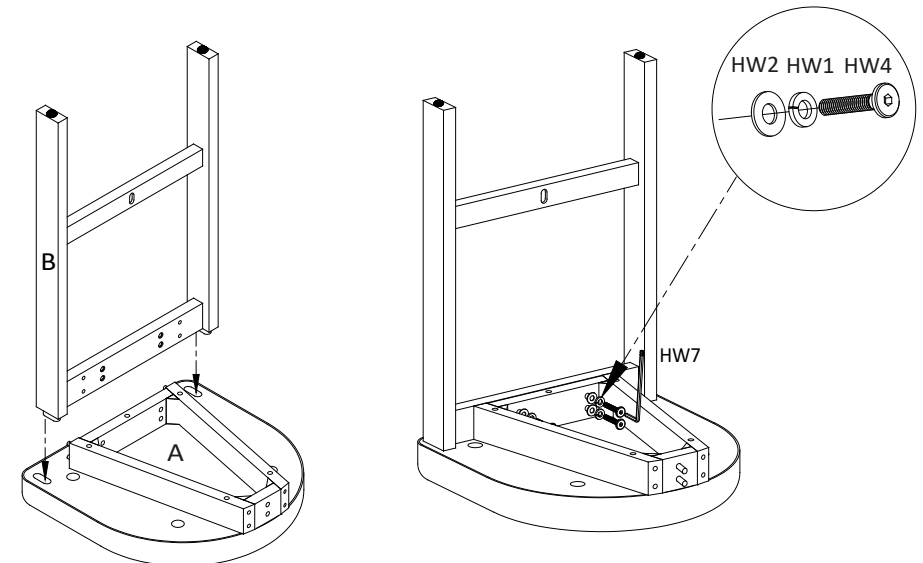
1

Open the box and take out the parts and hardware.



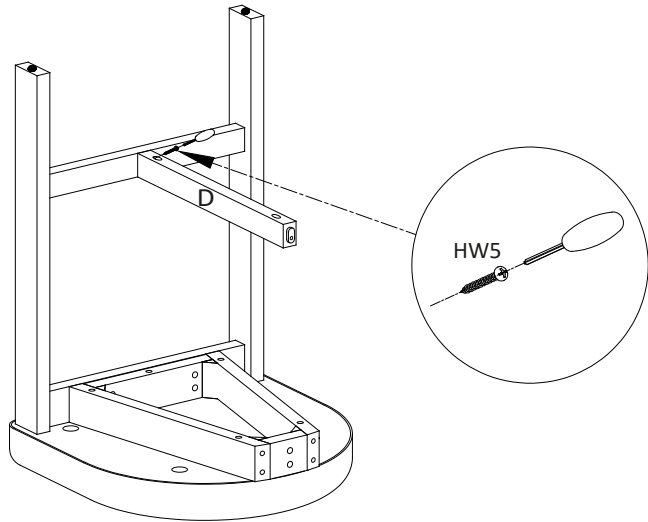
2

Connect the front part (B) to the seat (A) by HW1, HW2, HW4, HW7 as show. Please don't tighten completely.



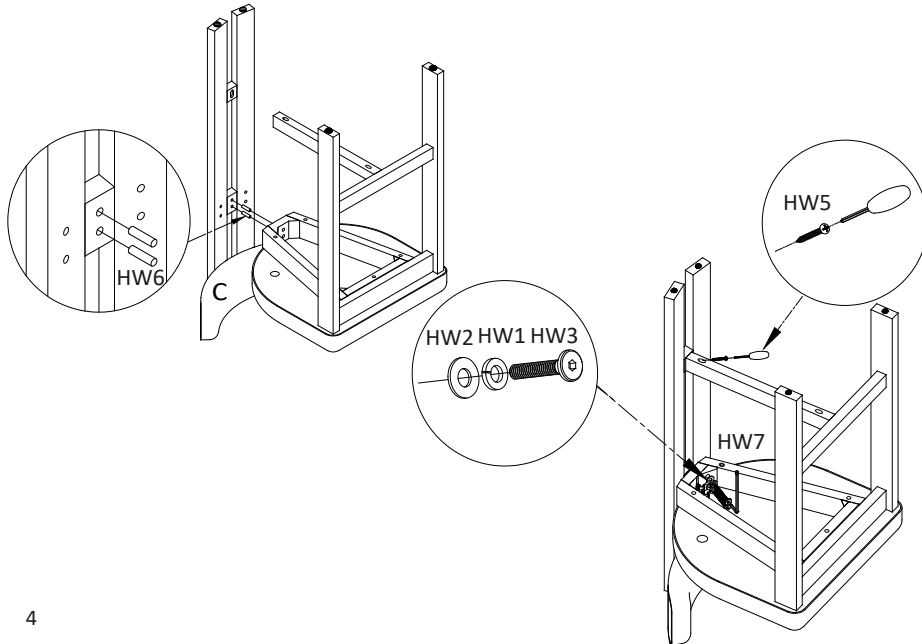
3

Connect the Stretcher (D) to the step 2 by HW5, Phillips head screwdriver tool (Not included) as shown. Please don't tighten completely.



4

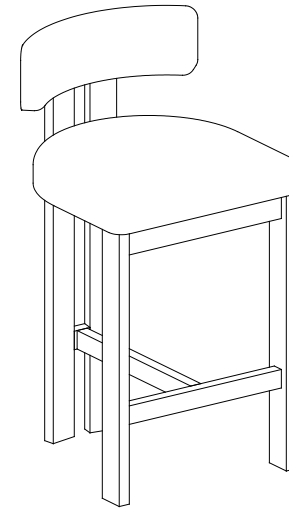
Connect the back part (C) to the step 3 by HW1, HW2, HW3, HW5, HW6, HW7. Phillips head screwdriver tool (Not included) as show. Please don't tighten completely.



4

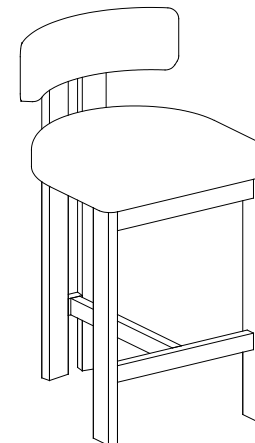
5

Turn the barstool upright. Make sure all legs are level and fully tighten all the screws.



6

Place the barstool in the place where you will use it. We'd love to see it – just tag.us



5