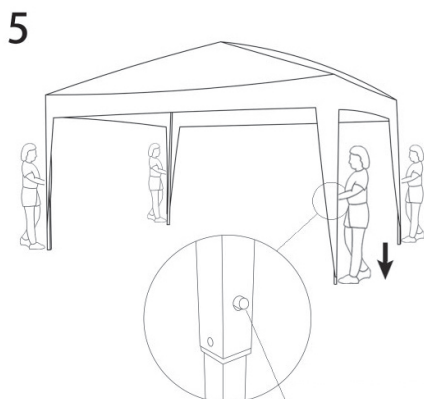
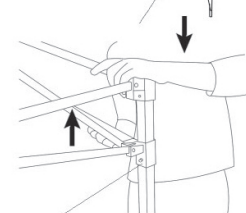
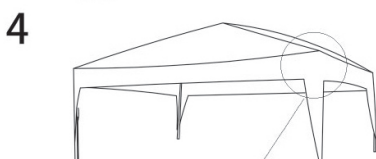
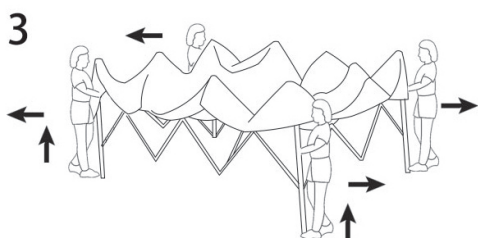
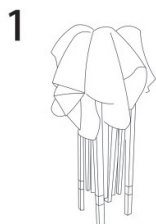


USER'S MANUAL

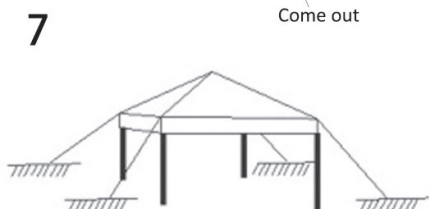
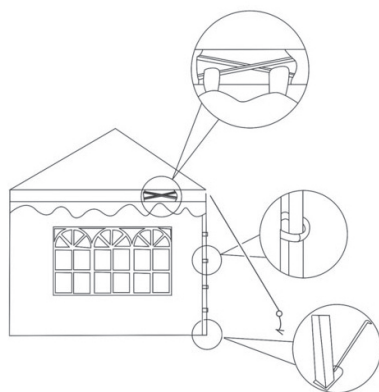
Canopy Tent

Open

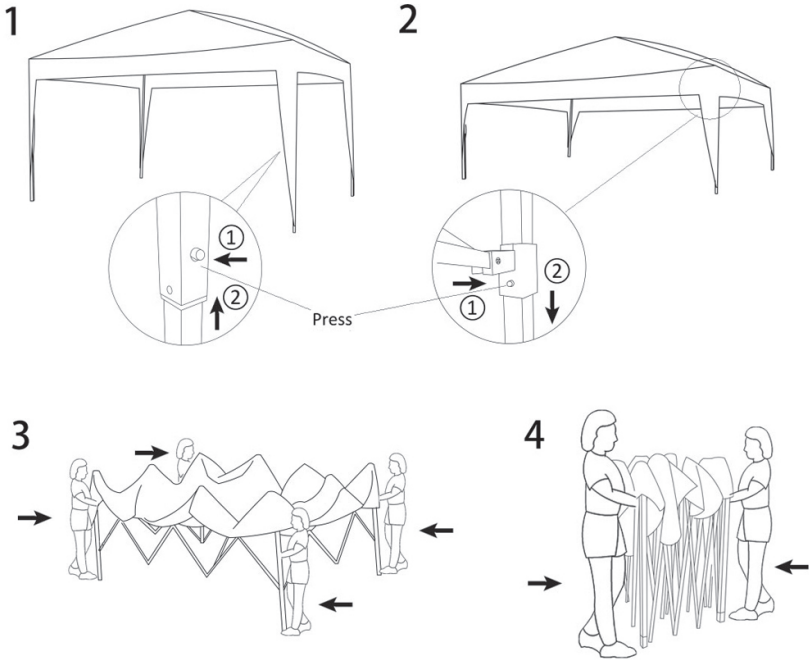
Before the tent is open, 2 persons are needed to hold 4 corners of the tent to gently shake and to slightly spread the cross pole of the tent frame.



6

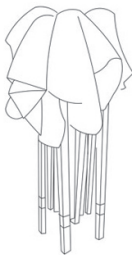


Close



WARNING

5



1. Take the canopy out of the box carefully and place on dry surface (sand, grass, or hard surface).

2. Please have at least 2 people helping with the assembly, in order to avoid the damage of steel pole. **DO NOT ATTEMPT TO ASSEMBLE TENT ALONE BECAUSE THIS COULD PUT UNNECESSARY STRESS ON THE LEGS AND THEY COULD GET DAMAGED IF THEY ARE NOT PULLED APART IN TANDEM.**

3. Secure tent in windy conditions by using the rope that is located on each side of the canopy and hammering stakes into the ground at a 30 degree angle to balance the sides of tent. If the canopy is placed on a hard surface, secure the 4 sides with bricks or sand bags to weigh the canopy down.

4. **DO NOT ASSEMBLE TENTS IN RAIN, SEVERE WIND OR SNOWY WEATHER CONDITIONS, BECAUSE THIS WILL DAMAGE YOUR TENT.** It is the owner's responsibility if the tents are set-up and damaged during these conditions.

5. Store your canopy/tent in a cool dry place when not in use.