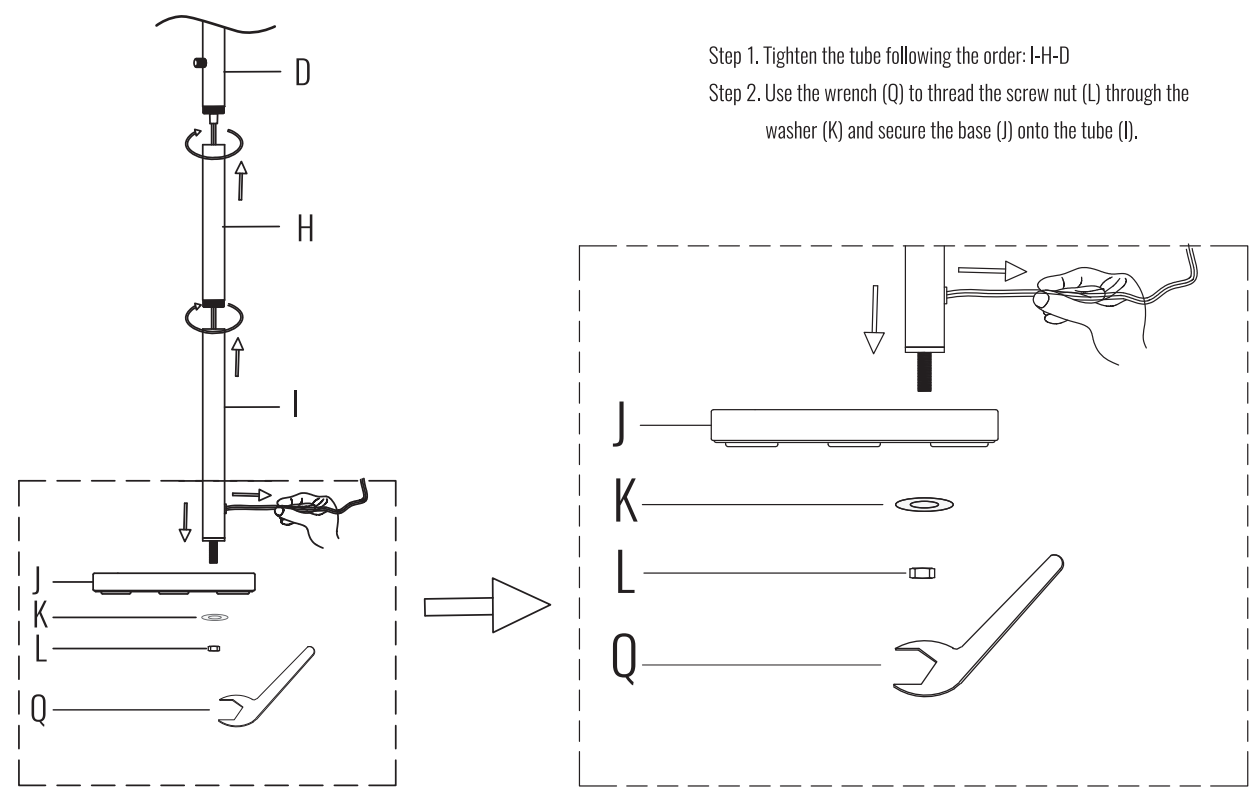
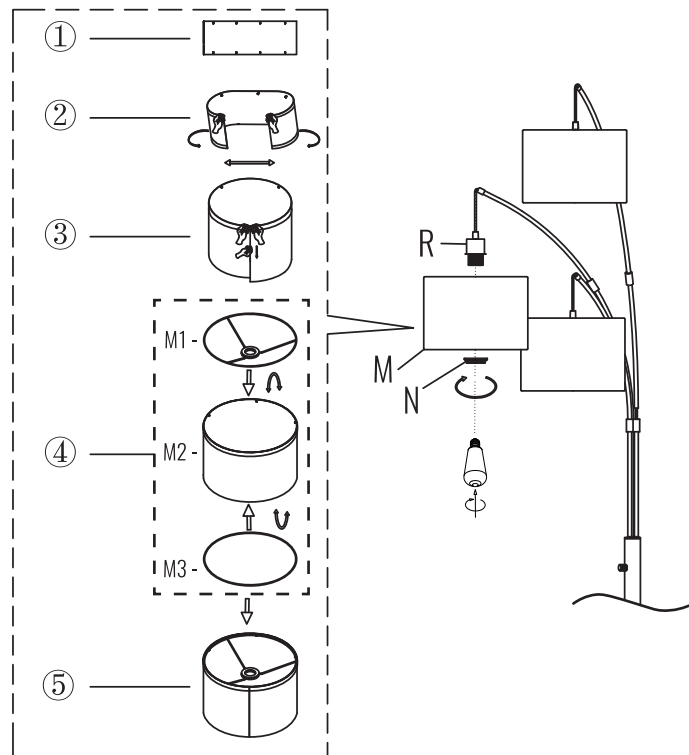


2. Install Base



3. Install Shade and Bulb

E26 Bulbs X 3
MAX 60W OR MAX 9W LED SELF-BALLASTED LAMP

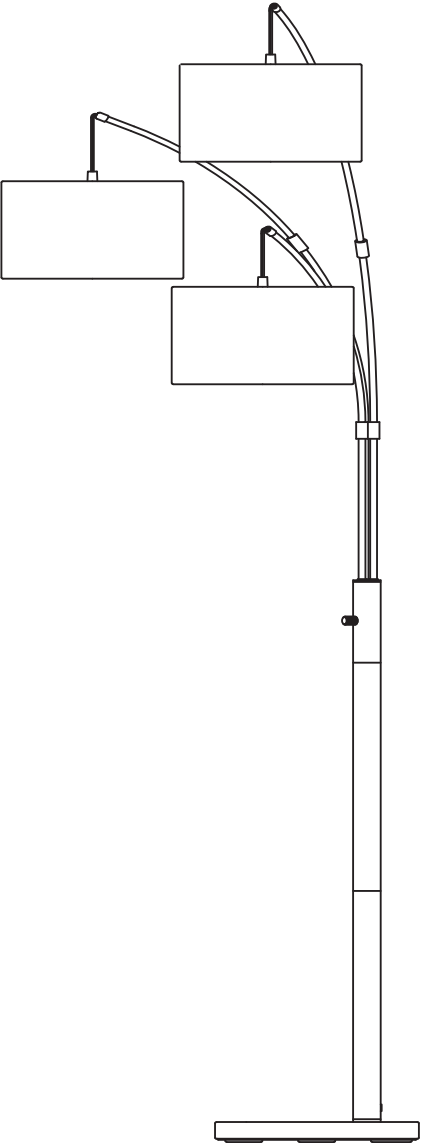


NOTE:
Please check that lampshade towards the same direction as base, if not, you could adjust the base so that the direction is consistent.

INSTALLATION MANUAL

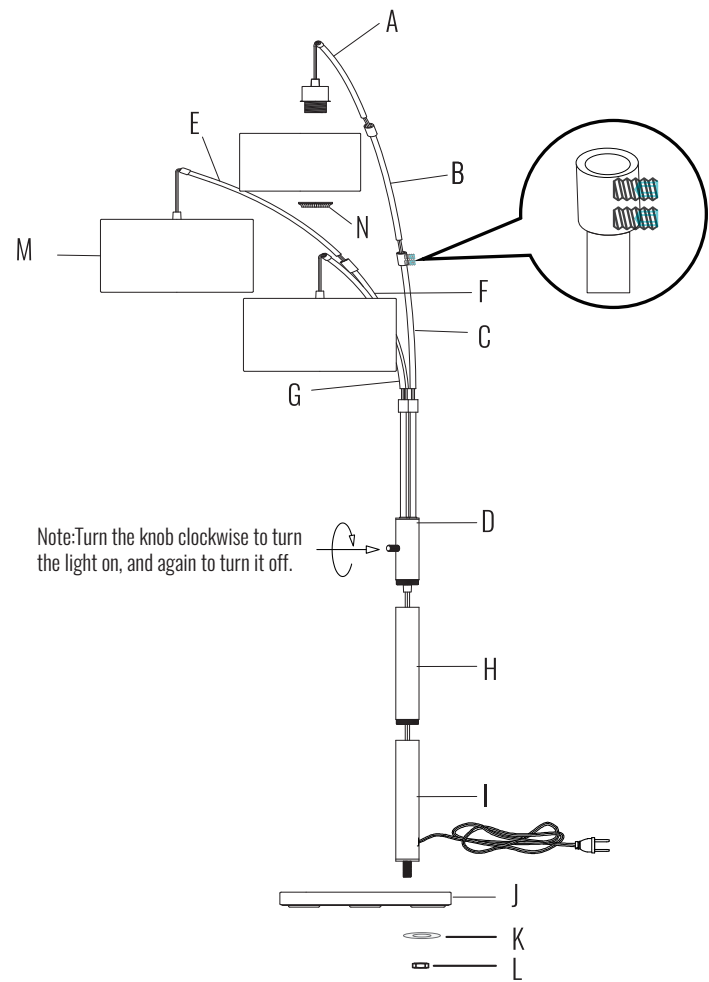
FLOOR LAMP

Model No.: NTL-02BR



Scan for Installation Video

PACKING LIST



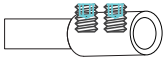



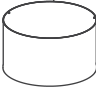

CONTACTS

Please contact us with following information:

- 1. Screen shot of your order page, including product picture, name and order ID number.
- 2. Problem details with pictures / short video if possible.

Email: caresdesk365@outlook.com

INSTALLATION KIT

O		16×	P		1×
	Set Screw			Allen Key	
Q		1×	M1		3×
	Wrench			Shade Bracket	
M2		3×	M3		3×
	Shade Cover			Shade Fixing Circle	

NOTE:

- 1. Some extra hardware may be included. The quantity listed above is the number required for installation.
- 2. Screws (O) are pre-assembled on the pole.

INSTALLATION

1. Install Tube

Please take out all of the lamp parts from the package, carefully pull out excess Power Cord from Base (I).

