

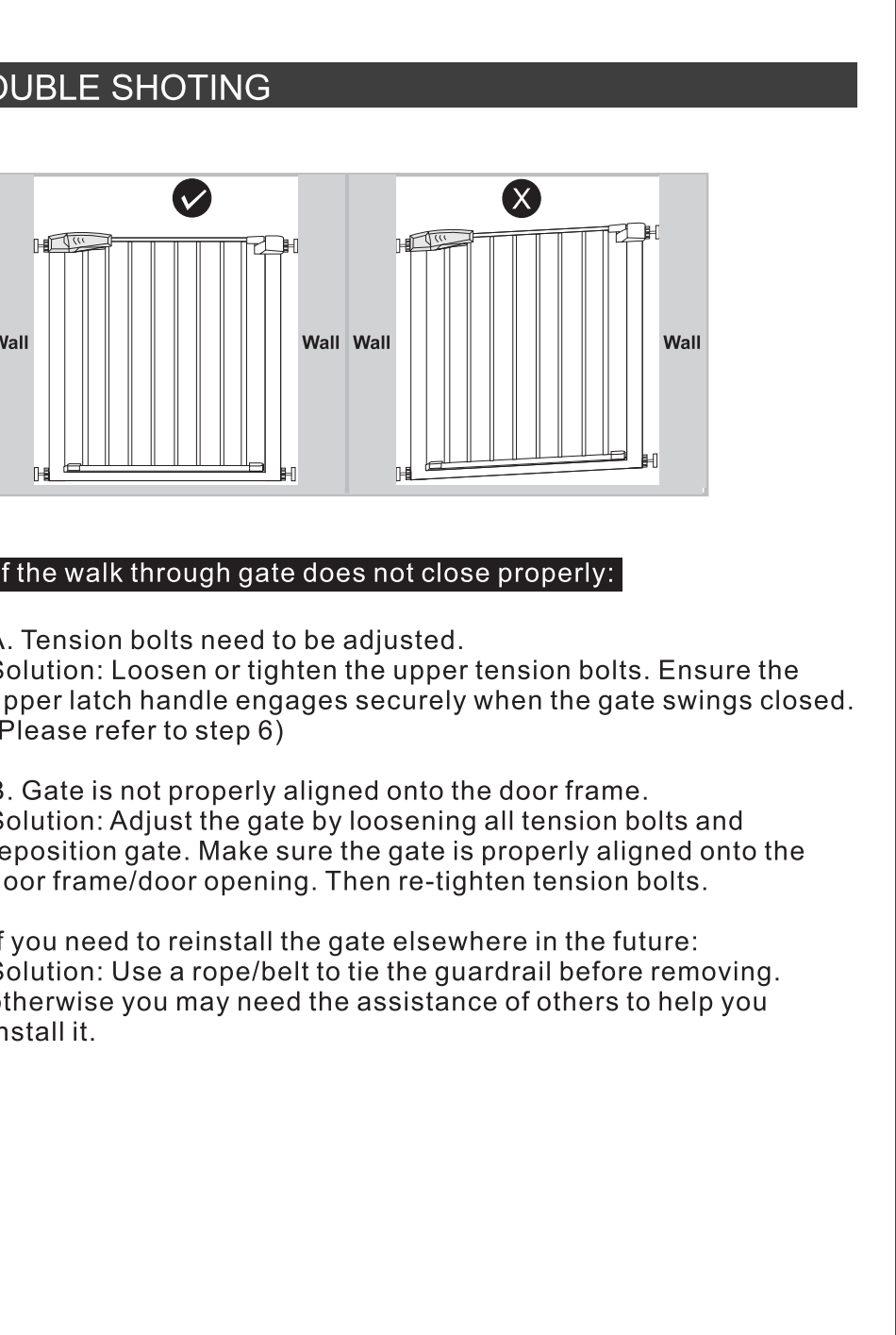
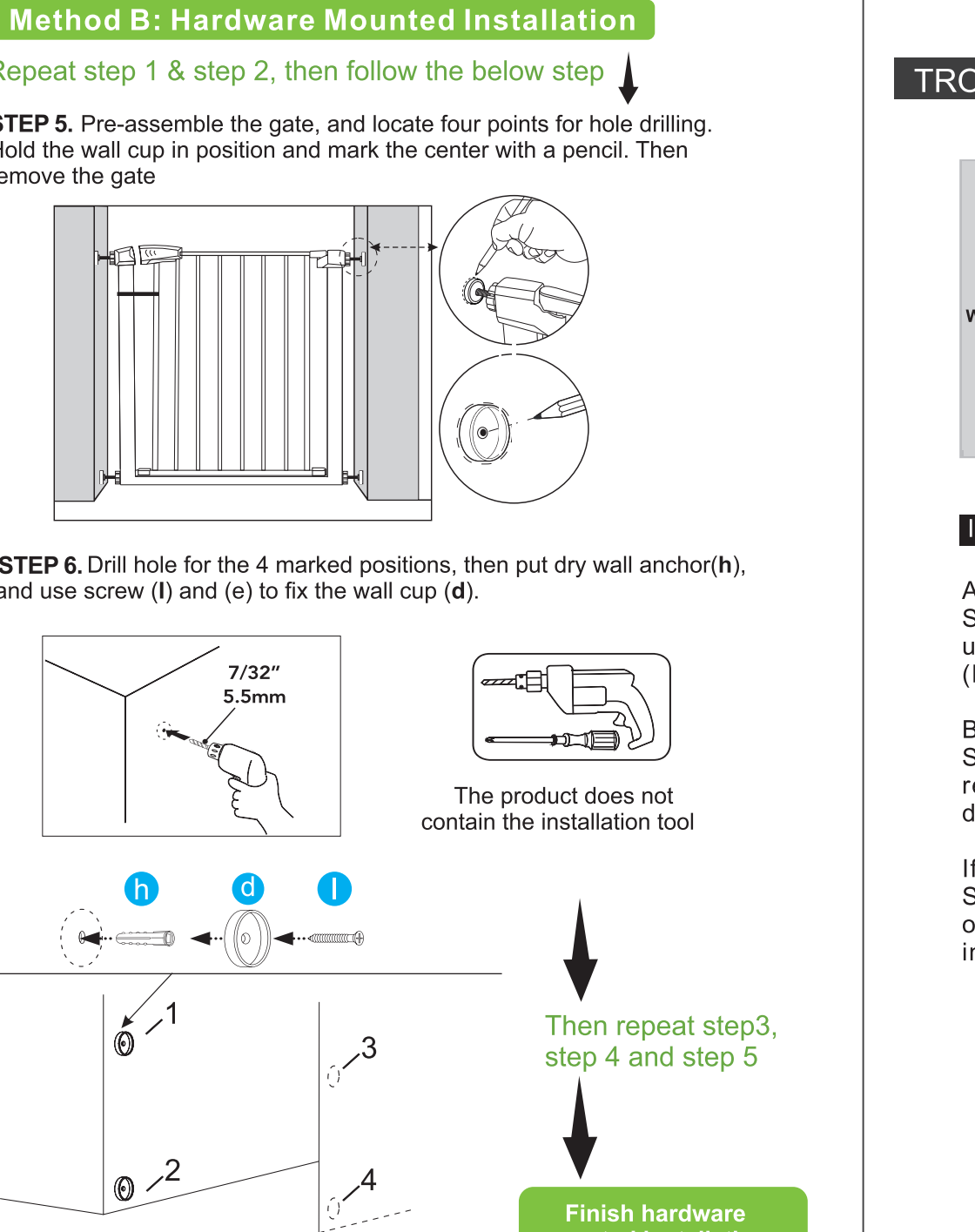
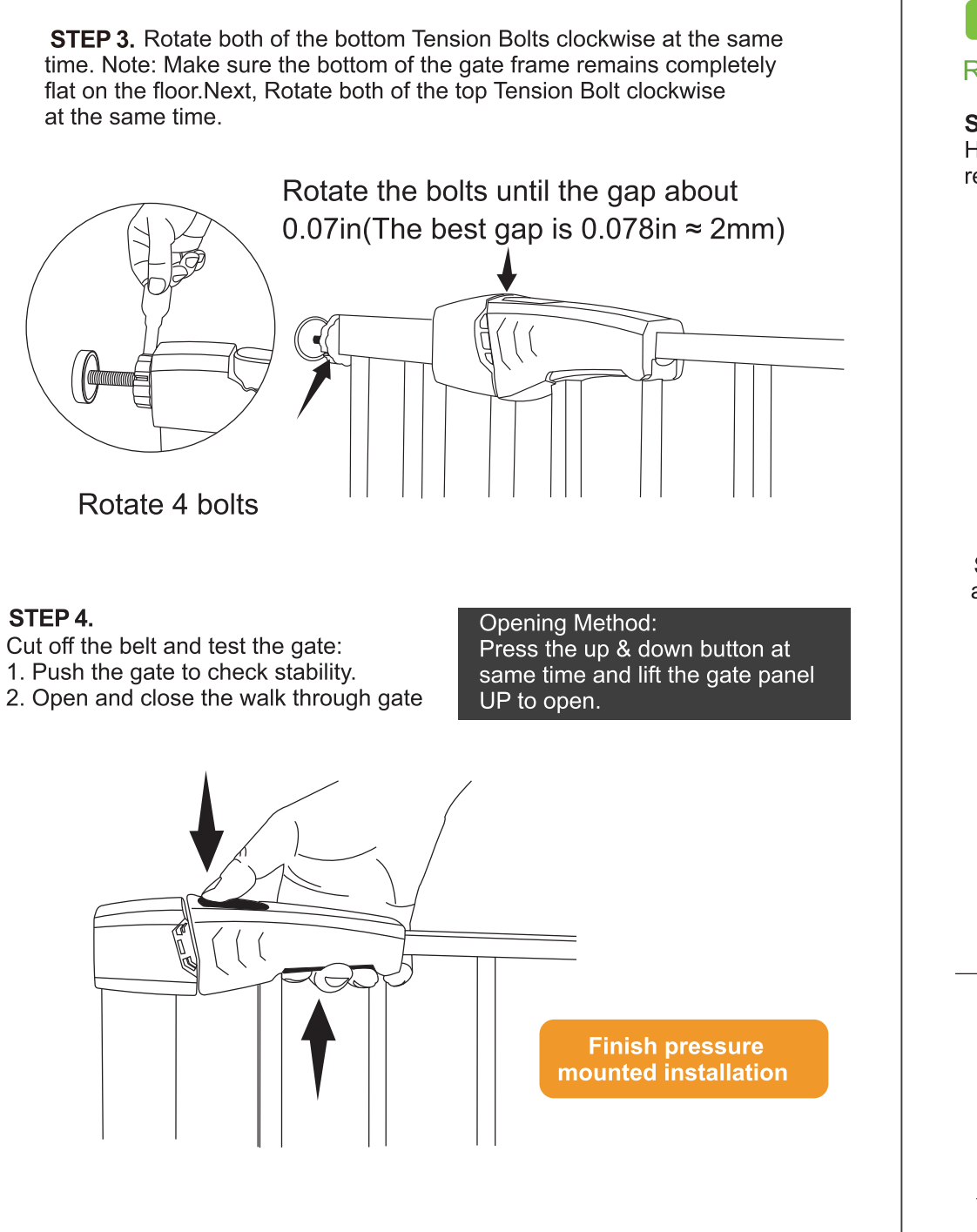
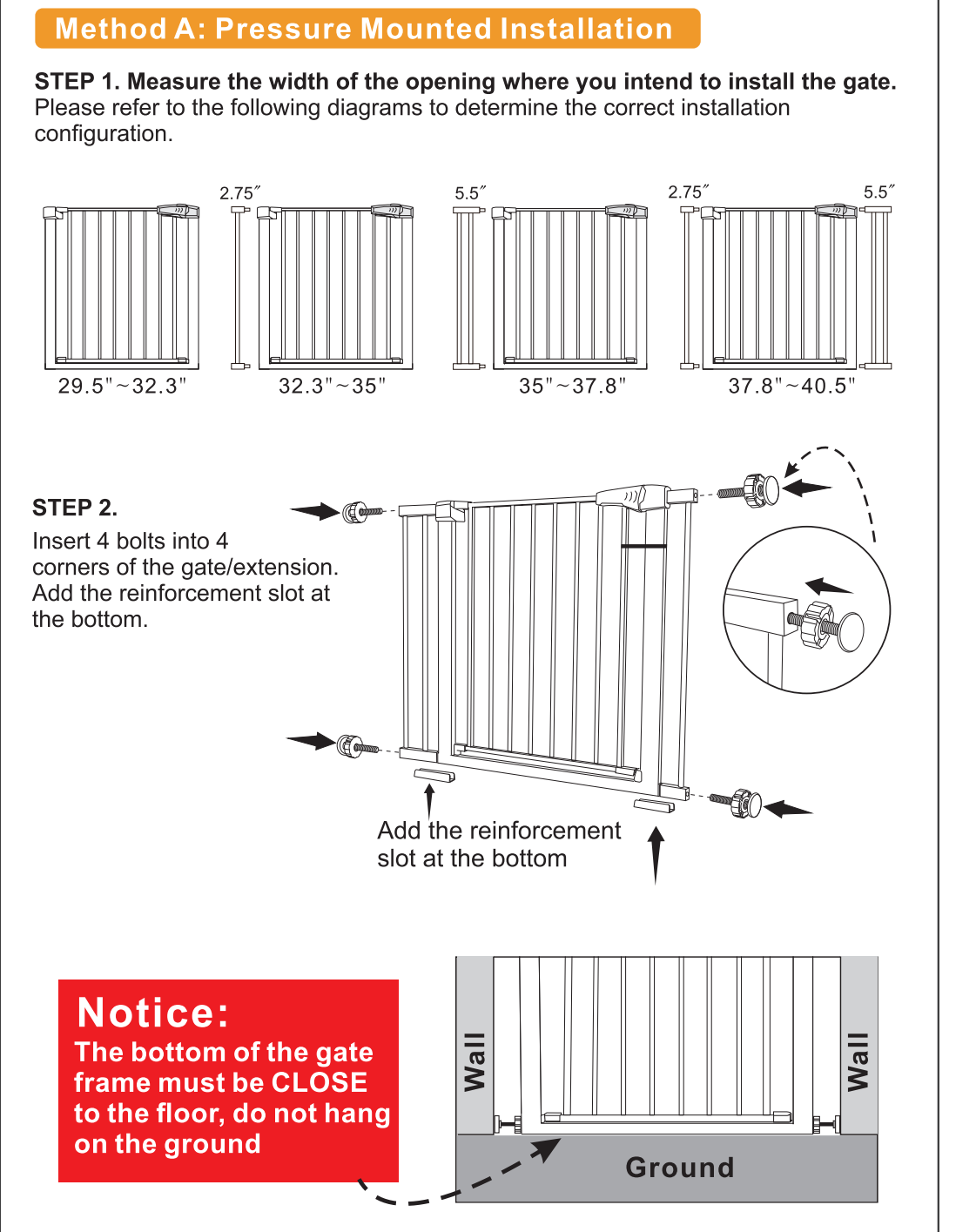
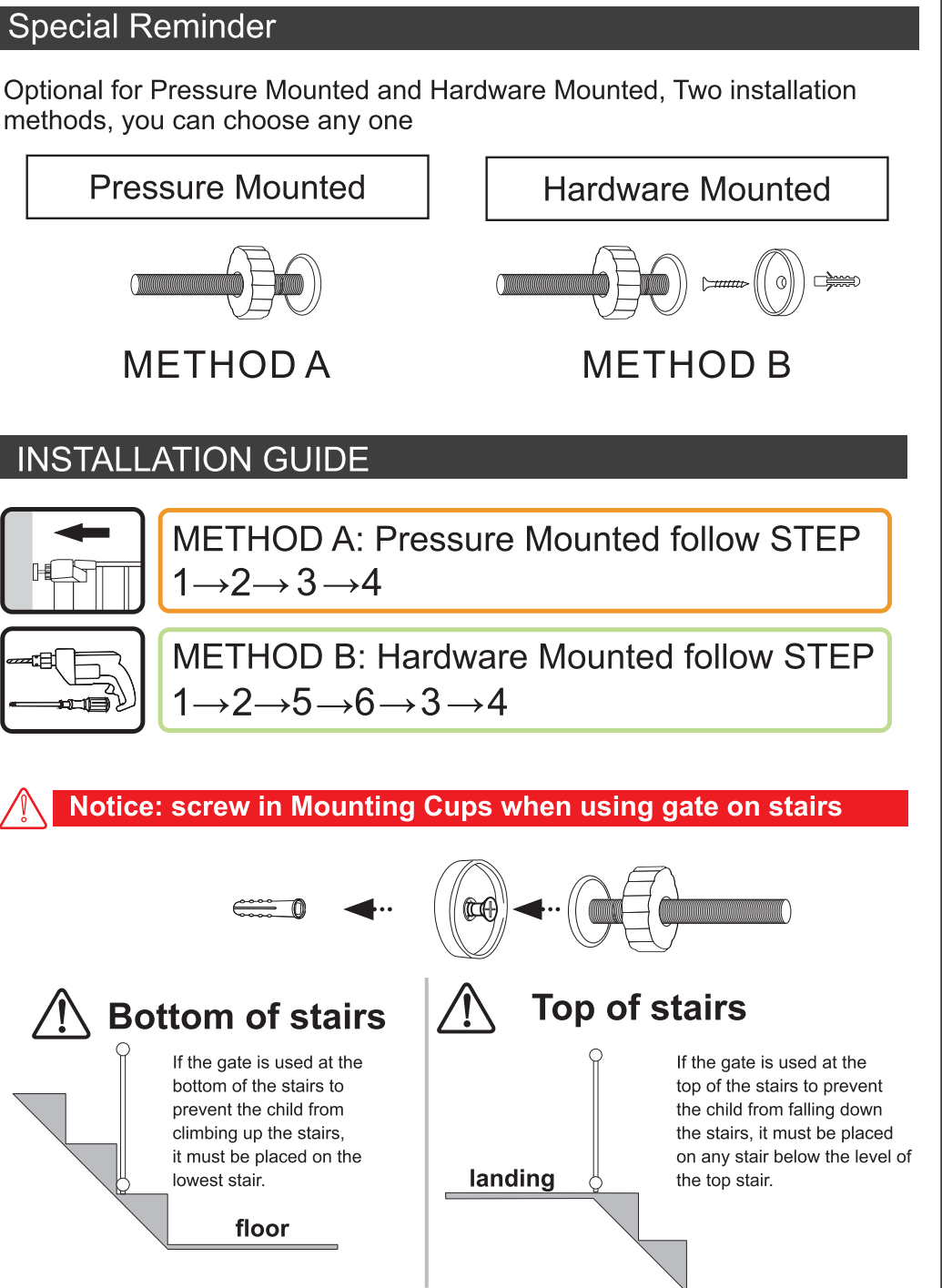
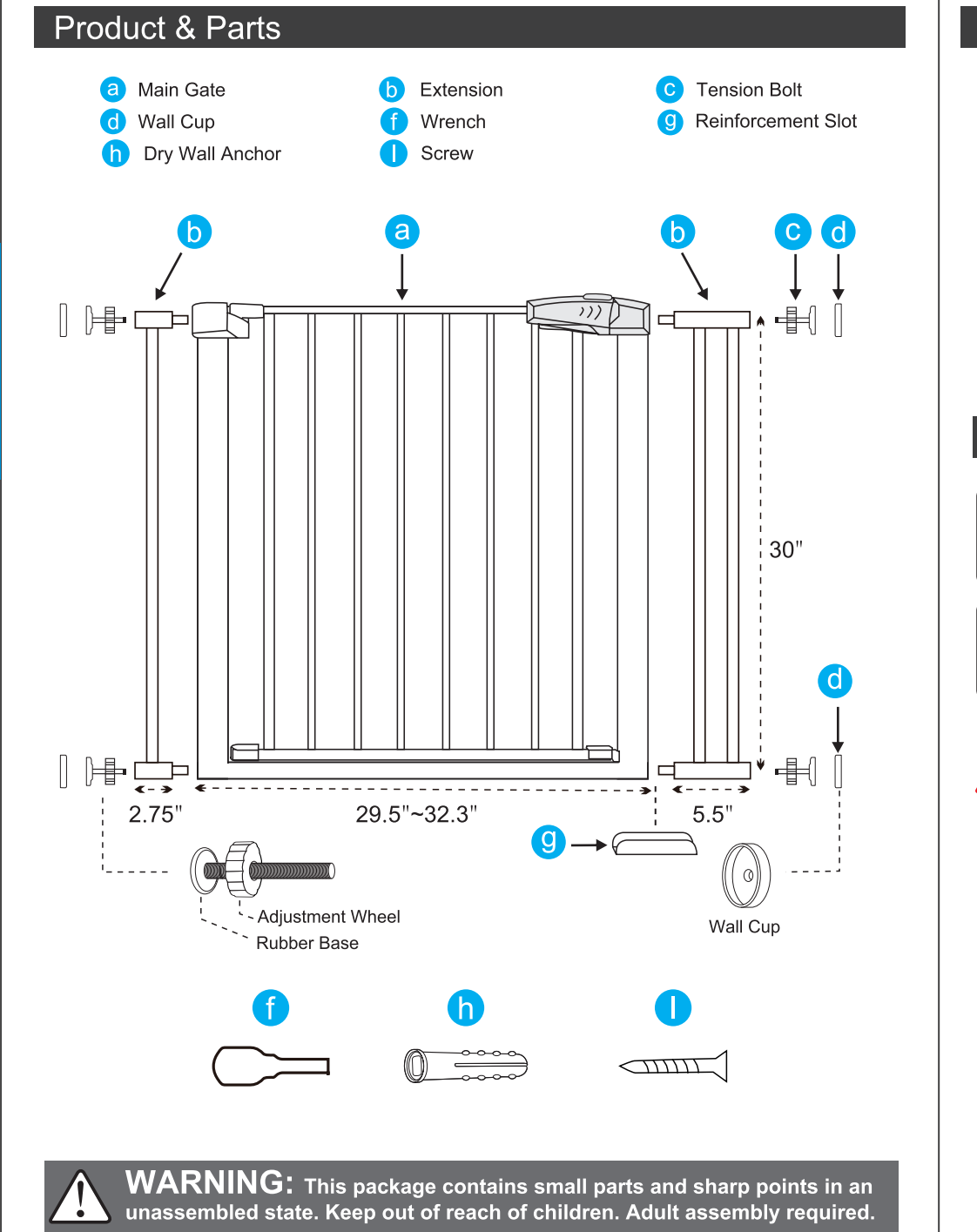
# AUTO CLOSE SAFETY GATE Installation Instructions

KS-103B/KS-103W

**WARNING:** To help your installation, **Do not cut off the belt** before installation is completed! **The door gap is NOT a defect!** It will be shortened to 0.078 inch after installation.

The door gap is NOT a defect! after installation, it will be shortened to 0.078 inch.

**WARNING**  
DO NOT CUT THE BELT before the installation is completed.



**WARNING**

- To prevent serious injury or death, securely install gate or enclosure and use according to manufacturer's instructions.
- Never use with a child able to climb over or dislodge the gate or enclosure.
- This product will not necessarily prevent all accidents.
- Never leave child unattended.
- Use only with the locking mechanism securely engaged.
- Intended for use with children from 6 months through 24 months of age.
- Stop using gate if any parts are missing or become damaged.
- Periodically check all fasteners to be sure they are tight and secure.
- Adult Assembly Required.
- The surfaces that the gate is to be fixed to must be suitable for the purpose and must be structurally sound;
- Indoor use only, is not to be exposed to outdoor elements;
- Install this gate away from heaters and other sources of heat.

- Children have died or been seriously injured when gates are not securely installed.
- ALWAYS install and use gates as directed using all required parts.
- You MUST install wall cups to keep gate in place. Without wall cups, child can push out and escape.
- NEVER use to keep child away from pool.
- Gates that are recommended for use at the top of stairs shall specify where the gate must be installed as a minimum distance to the first step of the stairs.

**SERVICE EVERYDAY**

Any question, please feel free to contact the distributor where you buy from.  
Info@kingso.net  
www.kingso.net