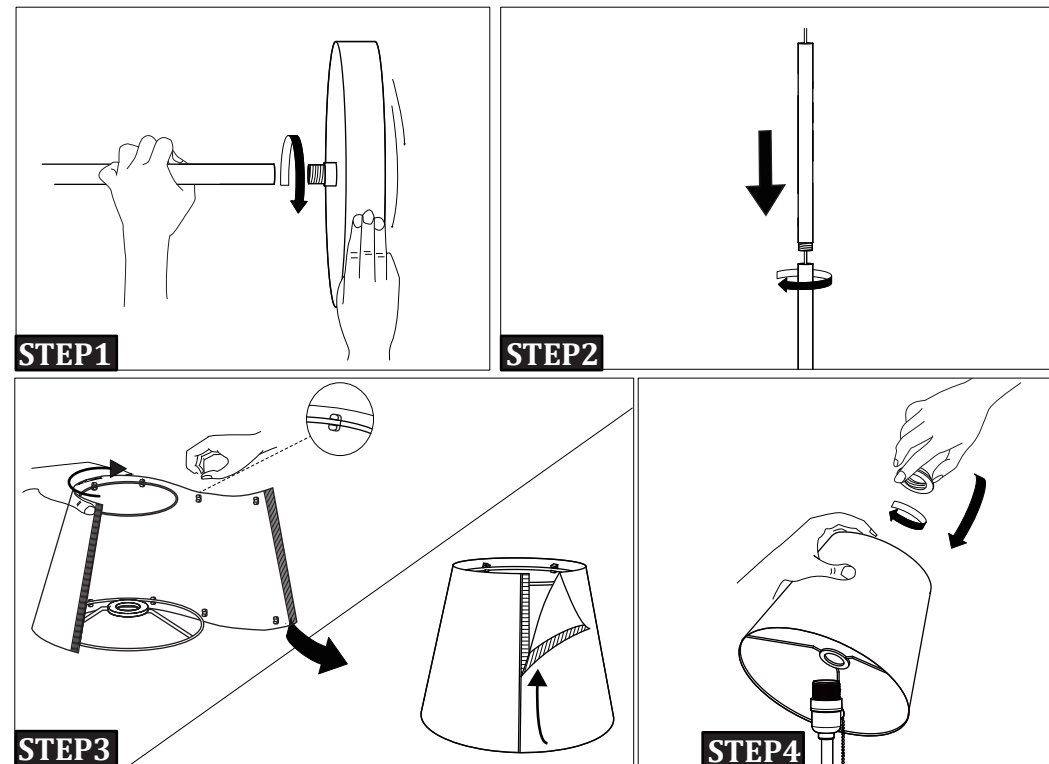


AA:Lampshade BB:Shade Frames CC:Socket Ring DD:Lamp Pole EE:Lamp Base



## INSTALLATION GUIDE

First of all, make sure that all parts are present.

**STEP1** Screw DD and EE tight by spinning EE.

**STEP2** Install each part of DD.

**STEP3** Snap the BB part into the AA part, attach one edge of the velcro to another.

**STEP4** Tighten the lampshade with the CC part, then install the bulb in.

## USING TIPS

This floor lamp comes with a 9W LED bulb, it has 3 color temperature modes (3000K/4000K/5000K) to meet your different needs in different scenarios.

You can change light modes (Warm Light → Off → Day Light → Off → Natural Light → Off) by pulling the chain.