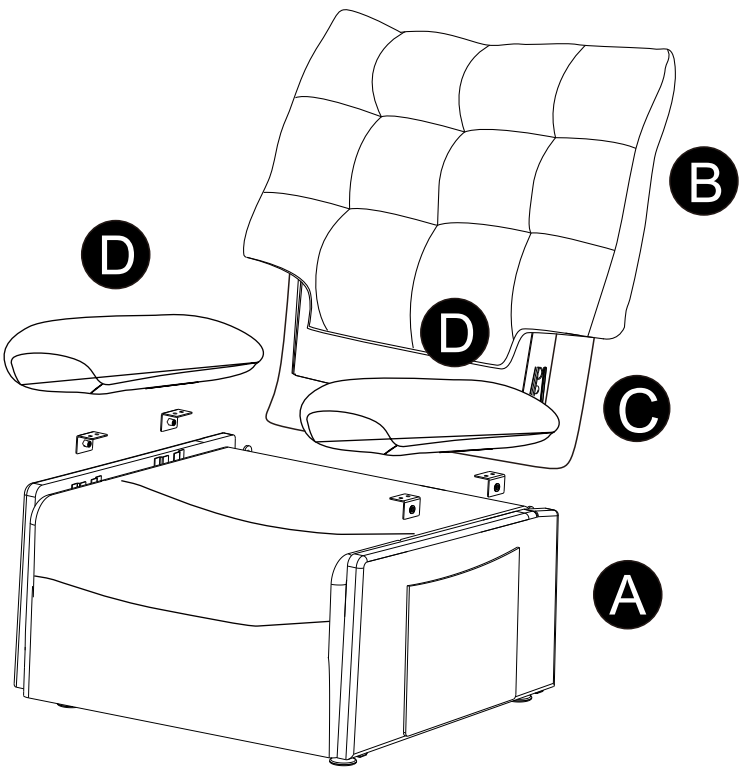


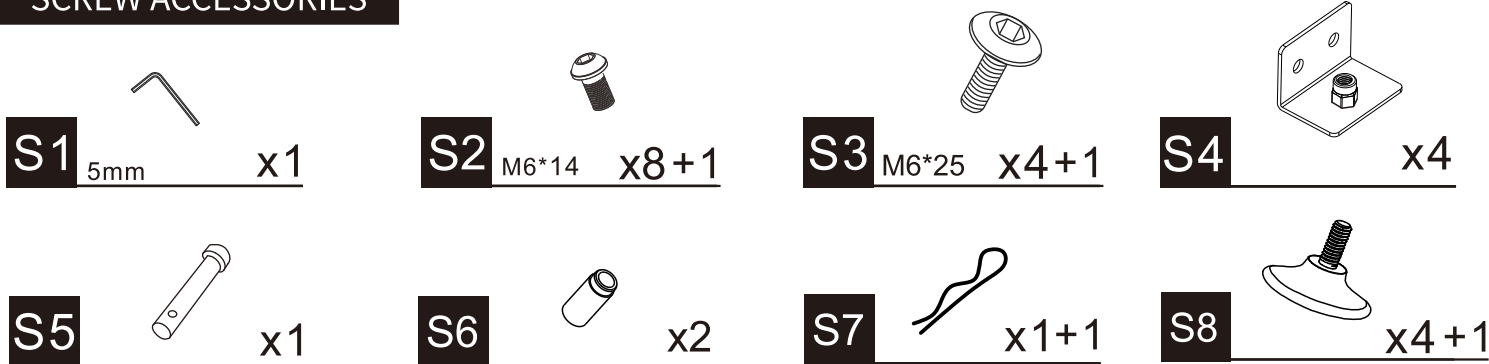
Assembly Instructions

* Note: Upper Armrest Part and Screw Pack Kit are placed under the seat.

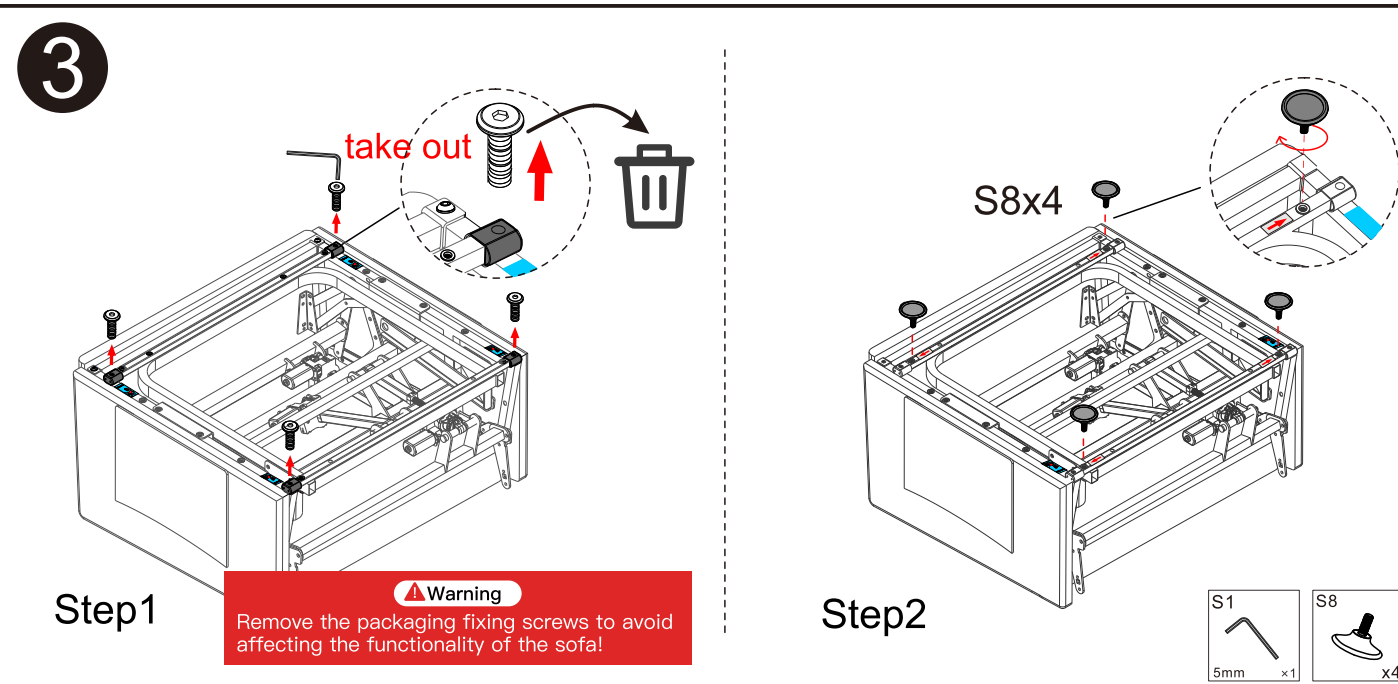
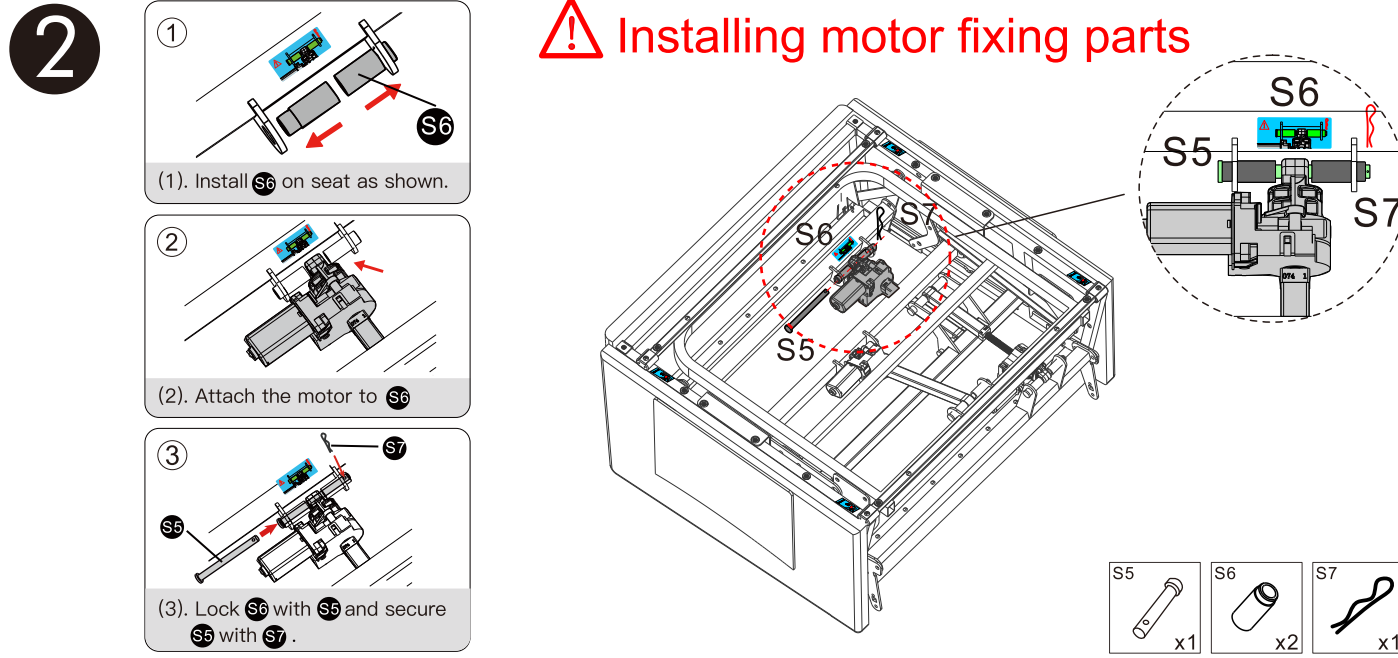
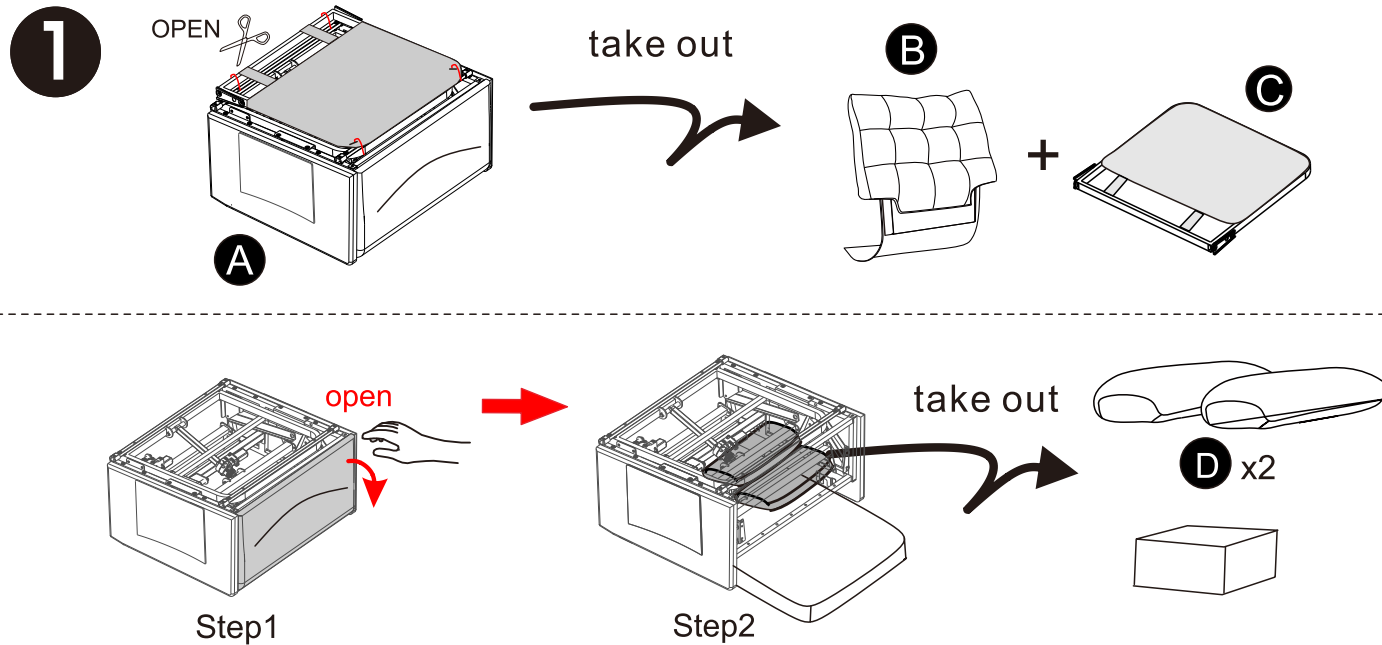
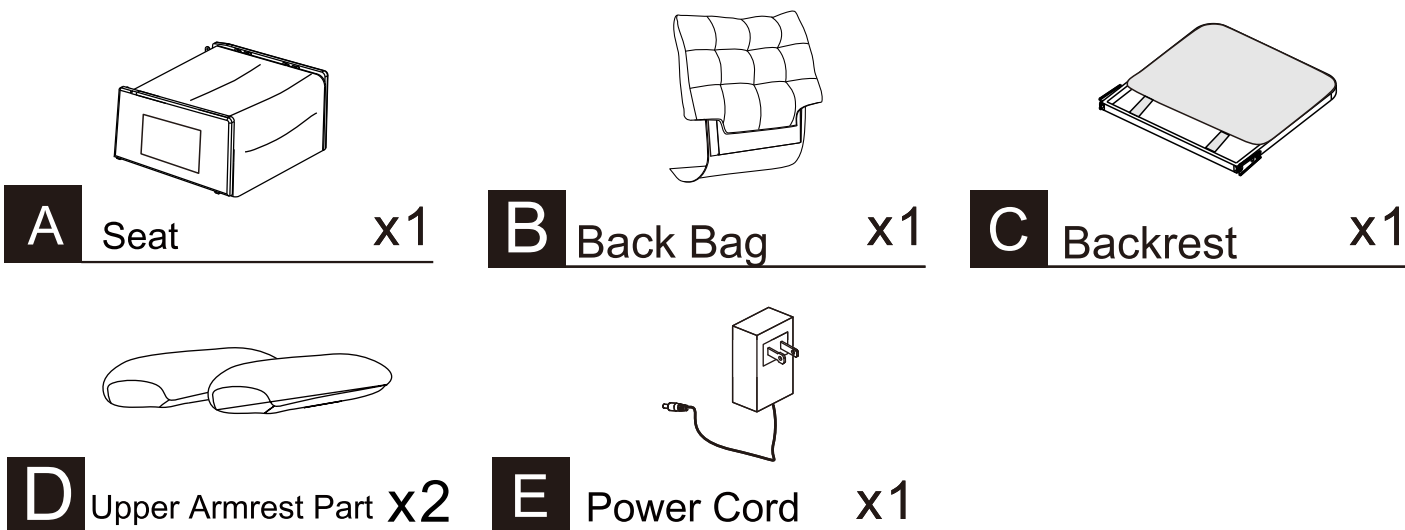
The Hand Control Panel has already been preinstalled on the recliner.



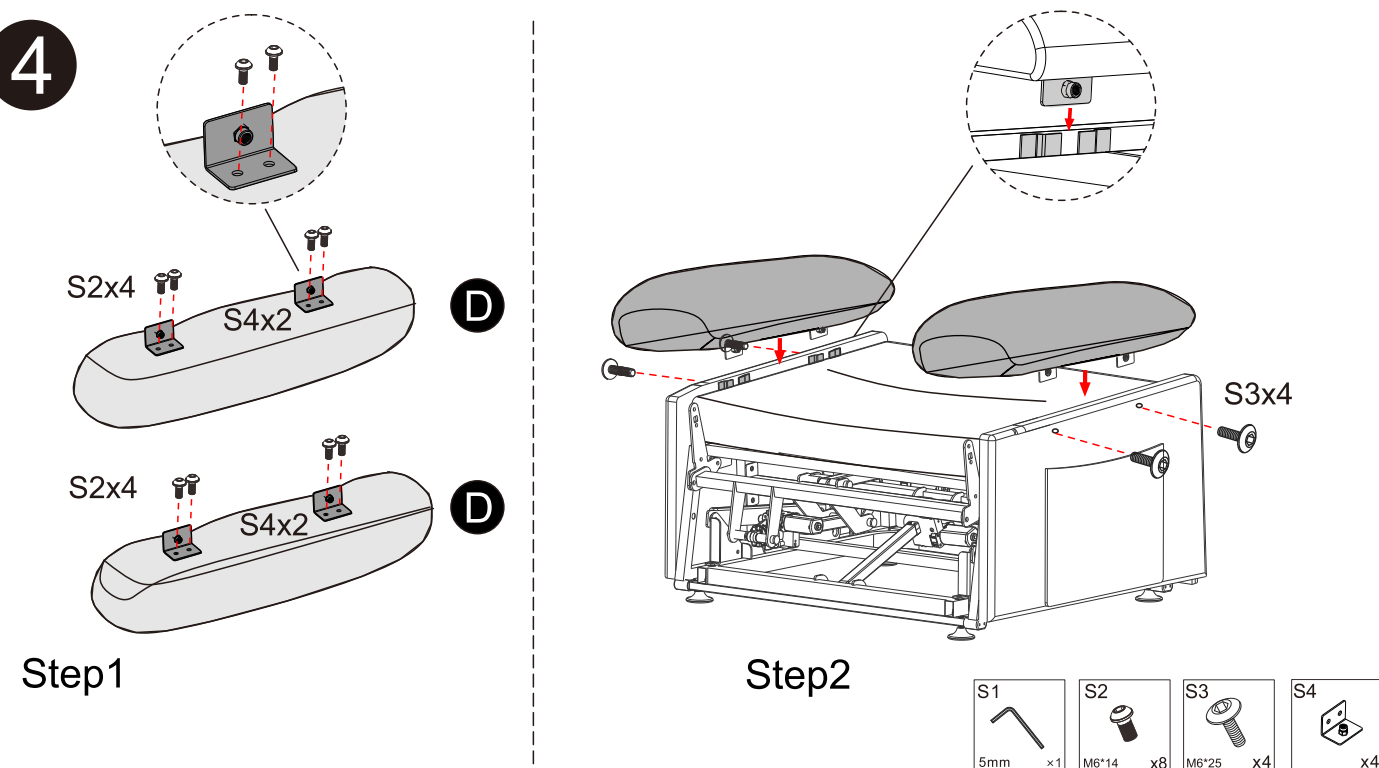
· SCREW ACCESSORIES



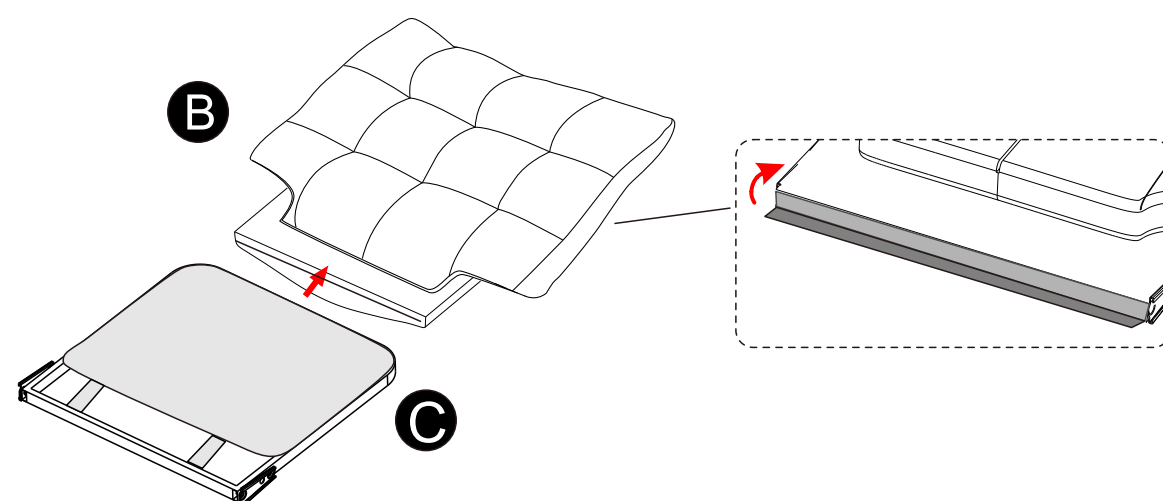
· PARTS ACCESSORIES



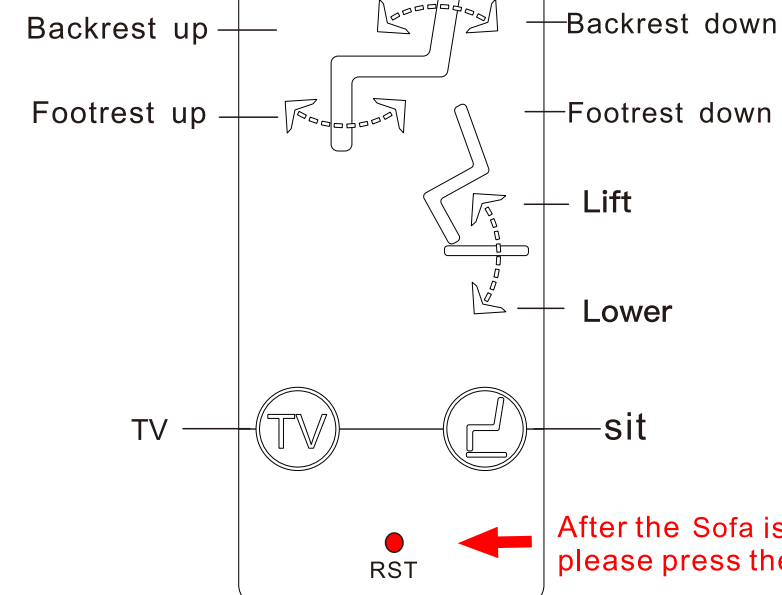
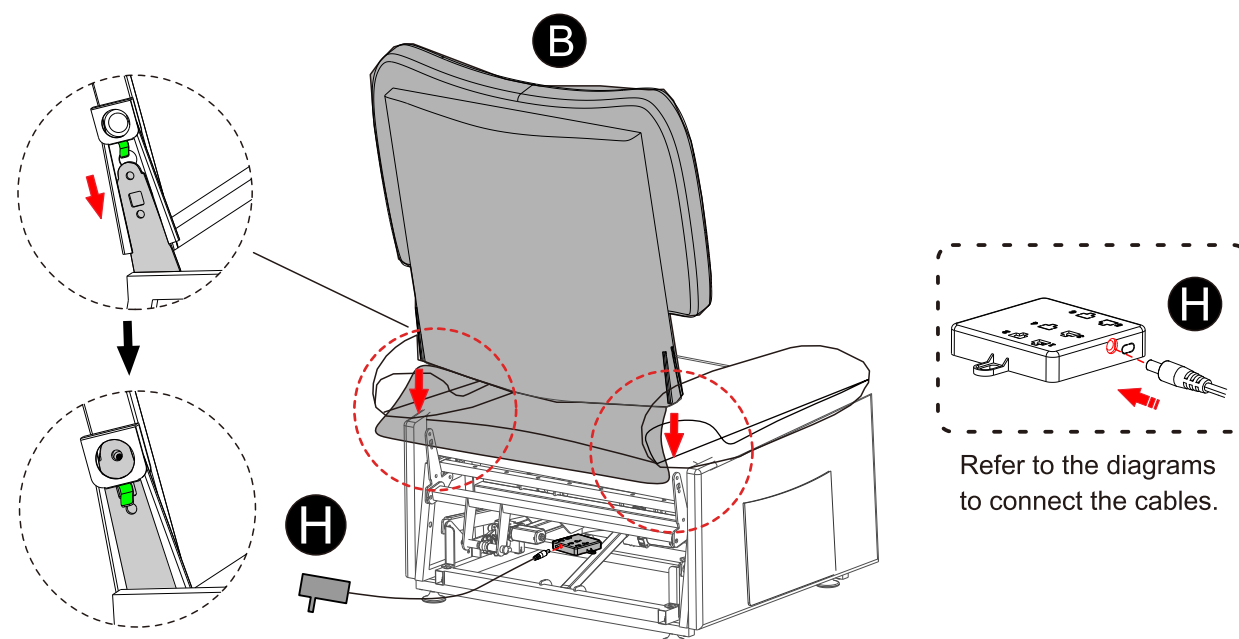
4



5



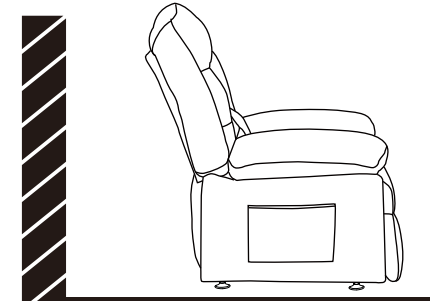
6



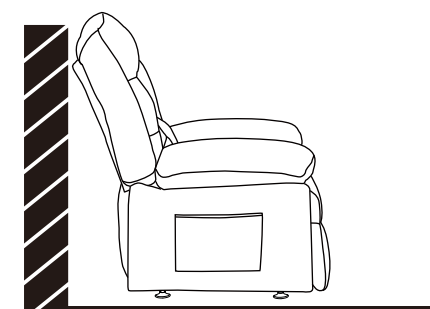
1. Raise the chair from its initial state (back upright, footrest closed).
2. Double-clicking the Lift button until the chair reaches the desired height.
3. Press any button to interrupt the operation.
4. Double-clicking the RST button to restore the chair's state.
5. During use, pay attention to anti pinch measures.

USAGE

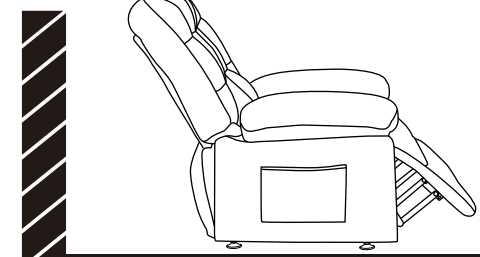
18" Leave enough space for reclining back



X



✓



X



Pay attention to the presser foot