

After-sales support phone numbers
5512038517 and 4016007053



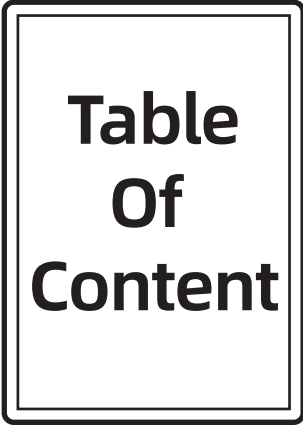
User Manual

Automatic Mahjong Table

Before use, please read the instruction manual carefully. The rated power supply is 100V-120V/60Hz. Do not exceed the specified range! Using the device beyond the rated power supply range may cause equipment damage or safety hazards!

This is the installation QR code for YOUTOBE, please scan me. If you don't want to scan, please enter my website

<https://youtu.be/jRfD2JpT0pk?si=KrGlpWra-aVThuJQ>



- I.Installation Notes01**
- II.Accessories List02**
- III.Installation steps03**
 - 1. In stalling the base leg03
 - 2. motor installation and debugging04
 - 3. Frame Installation.....06
- IV.Usage Instructions07**
 - 1. Mahjong Machine Precautions07
 - 2. Introduction to the opeartion panel functions.....08
 - 3. Mahjong table operating08
 - 4. Mahjong Machine tile folding09
 - 5. Mahjong Machine folding function.....09
 - 6. Mahjong Game Mode Setting.....09
 - 7. Introduction to Mahjong11
- V.Troubleshooting and Feedback14**

I. Installation Notes

Warning:

1. Please read the instruction manual carefully before using this product.
2. Unplug the power cord when not in use.
3. To avoid the risk of suffocation and swallowing small parts, keep children under three years old and pets away from plastic bags and small components during assembly. Properly dispose of packaging materials before use.
4. It is recommended that two people perform the installation, which takes approximately 1 hour.

Warranty:

Our company solemnly promises: With the warranty card and invoice, you will receive high-quality after-sales service.

1. The entire machine is covered by a free one-year warranty from the date of purchase.
2. If you encounter issues with product installation, use, or repair, please visit the following website to watch instructional videos:
https://www.youtube.com/@homemiyn_official
3. The following situations are not covered by the free warranty service:
 - A. Damage caused by improper transportation, handling, use, or maintenance by the user.
 - B. Damage caused by disassembly or repairs performed by the user or non-authorized personnel.
 - C. Tampered invoices or missing purchase invoices and warranty cards.
 - D. Damage caused by abnormal voltage, water (fire), or other external factors.
 - E. Damage caused by force majeure or human factors.
 - F. Wear-and-tear parts are not covered under warranty, including: mahjong tiles, outer frame, tablecloth, dice glass, etc.
4. For products beyond the warranty period or not covered under the free warranty, our company will still provide sincere service.
 - ★ The warranty period is calculated from the date of sale. Please keep the warranty card and purchase invoices safe.
 - ★ Our company reserves the final right to interpret this warranty statement and its scope.
5. Safety Usage Notes
 - For safe usage, please read the "Product Instruction Manual" carefully before use.
 - Products listed in the manual may undergo changes without prior notice. We appreciate your understanding.
 - Colors of products shown in the manual may slightly differ from the actual product due to printing variations.
 - Advertised or manual-listed products may be out of stock.
6. For other inquiries, please contact us via email. We will respond within 24 hours: support@homemiyn.com.

Maintenance

To extend the lifespan of your mahjong machine, please perform regular maintenance.

1. Do not place the mahjong machine in areas exposed to frost, rain, snow, or excessive dust, as this may affect performance and shorten its lifespan.
2. When placing the machine, ensure the tabletop is level with the ground and not excessively tilted.
3. Keep the tabletop clean and avoid scratching the felt surface.
4. Prevent liquids from entering the machine to avoid damage.
5. Avoid strong impacts or striking the machine forcefully to prevent harm.
6. Clean mahjong tiles regularly to keep them dry, smooth, and clean.
7. Do not place foreign objects into the turntable to prevent them from falling into the mechanism and damaging the rotating structure.
8. Periodically have a professional technician inspect internal wiring and clean dust accumulated on the sensor surface with appropriate tools.

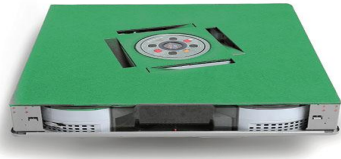
(Users should not attempt this themselves to avoid injury.)

II. Accessories List

You will receive three packages: Mahjong machine core, Mahjong machine frame, Mahjong machine folding legs (mahjong tiles and folding legs are packed together in one box).

(Reminder: Be cautious when moving the main unit to avoid accidents and floor scratches.)

Package 1/3:



Main unit×1



Table cover×1

Package 2/3:



Edge Strips×4



Decorative Side Panels× 4



Decorative Corner Pieces × 4



M4*16 Screws×8

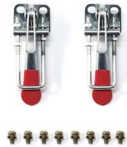


M4*8 Screwpointed Screws×4

Package 3/3:



Fixed Angle Brackets × 2



Latches × 2
M4 × 10 Screws × 8



M8 × 55 Screws × 4
Washers × 4
Spring Washers × 4



M5 × 10 Screws × 2
Buffer Pads × 2



M5 × 8 Screws × 4
Figure-8 Washers × 2



Wheels×4



Cross-Head Screwdriver×1



Hexl-Key Wrench×1



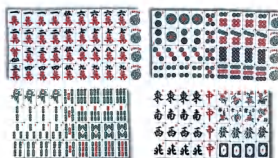
Support Column×1



Baseplate×1



Powercord×1



Mahjong Tiles×2

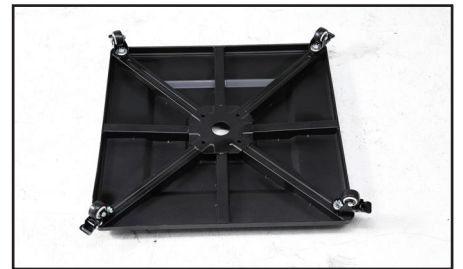
III. Installation Steps

1. Installing the Base Legs

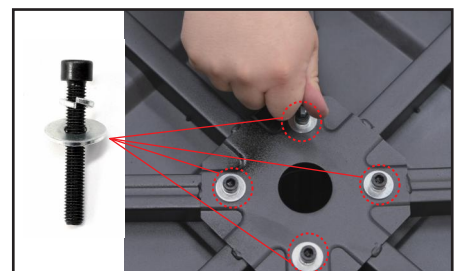
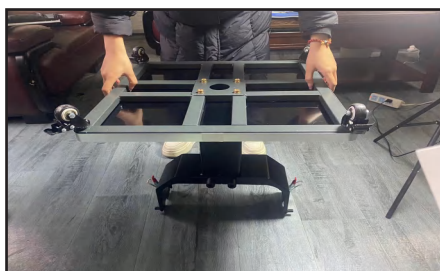
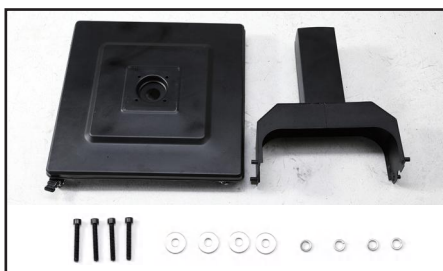
1. First, open the folding tile case and remove the folding legs, mahjong tiles, and related accessories. The accessory pack includes a screwdriver and an L-shaped hex key. Open the accessory pack to find the necessary parts and spare components—the set of tools will be used later in the process.



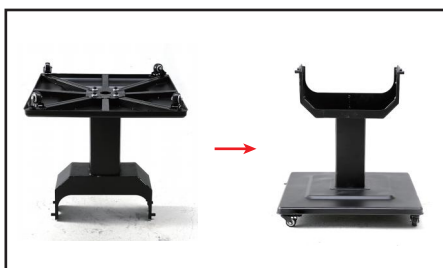
2. Attach the four swivel casters to the base plate by screwing them clockwise into the four corresponding holes on the plate and tightening them securely.



3. Place the support column upside down on the ground. Then, position the base plate (also upside down) onto the column, aligning the four middle holes at the bottom. Insert the M8 × 55 screws along with spring washers and flat washers, then use the hex key to tighten the screws into the four corresponding holes connecting the base plate and the column.



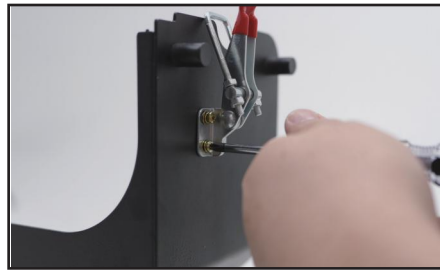
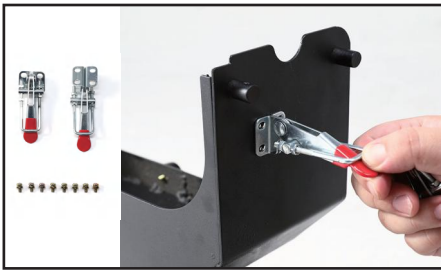
4. Flip the assembled base plate upright and place it on the ground. Step on the locking levers of all four swivel casters to secure the wheels in place, making subsequent installation easier.



5. Use an M5 × 10 screw to pass through the buffer pad, then secure the two buffer pads to the corresponding holes on one side of the column using a screwdriver and tighten them.



6. Use M4 × 10 screws to fix the two latches onto the folding legs.



2. Motor Installation and Debugging

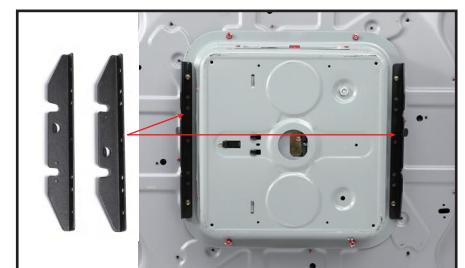
1. Place the main chassis on its side. Use a screwdriver to remove the 8 metal connecting plates, then open the chassis from the bottom and take out the main unit.

(Note: Do not remove the screws in contact with the ground. Be careful of metal edges to avoid cuts.)



2. After removing the main unit, position the motor assembly with its switch facing upward (sideways). **(Note: The motor switch lock must face upward.)** ;

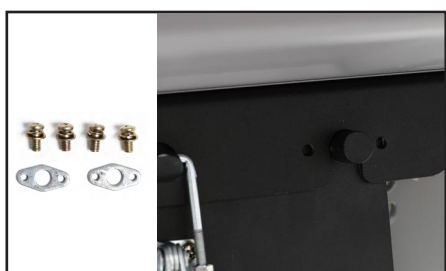
Remove the four screws on both sides of the motor housing, then use the same screws to install the fixed angle brackets onto both sides of the motor housing. **(Note: Pay attention to the correct orientation of the angle brackets.)**



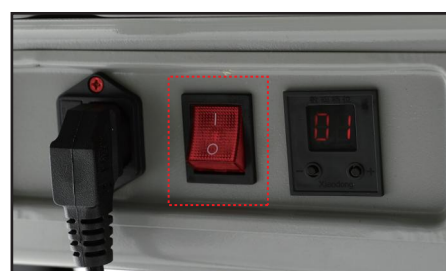
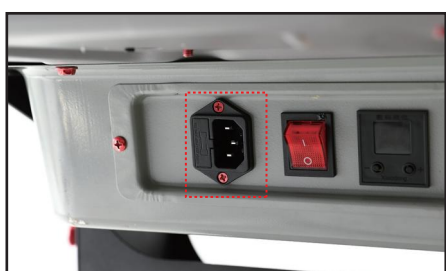
3. Install the main unit onto the base. Align the cylindrical protrusions on both sides of the column with the notches on the fixing angle irons, and match the buckle with the position of the fixing plate on the angle iron. Then securely fasten the buckle to the fixing angle iron.



4. Place two figure-8 shaped spacers onto one of the cylindrical protrusions with screw holes on each side of the column. Secure the spacers using M5*8 screws.

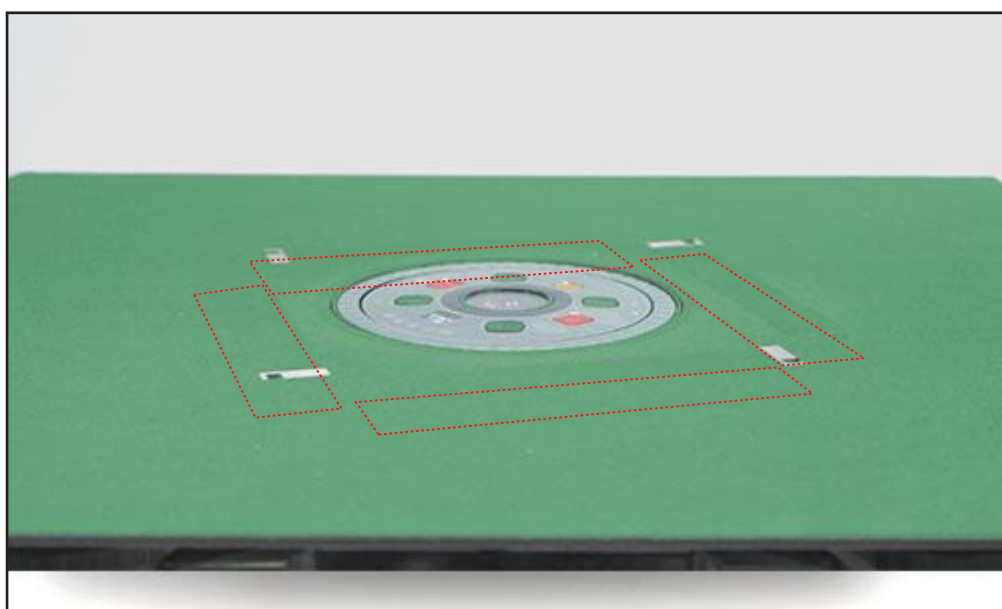


5. Insert the power cord vertically into the main unit's power socket, connect the other end to a power source, and turn on the main unit to check if the mahjong table is functioning properly.



6. Verify that the four bearing plates of the mahjong table have risen to table level, and test all functions according to the instructions on page 7. If any malfunctions are detected during testing, please refer to the troubleshooting and feedback section on page 14 for diagnosis.

(Ensure all functions are working properly before proceeding with the next installation step.)

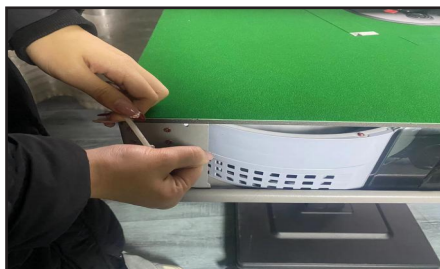


3. Frame Installation

1. Open the package and remove the frame and accessories.



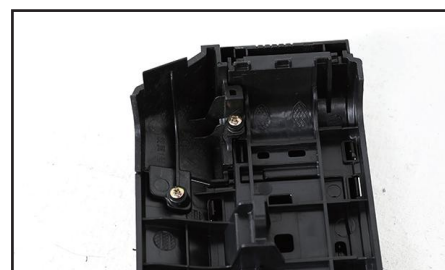
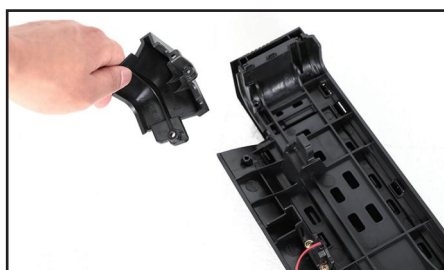
2. Cut the cable ties on the corners of the main unit.



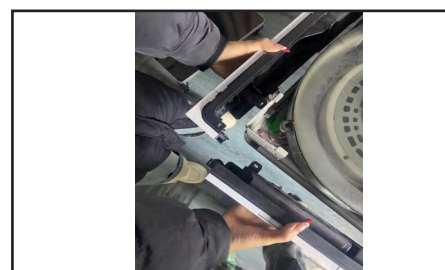
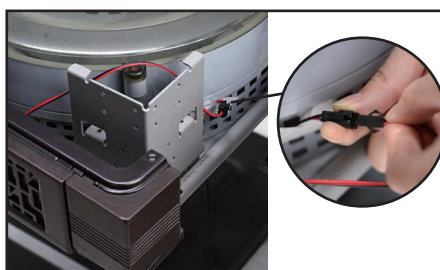
3. Open the main unit's stable top cover.



4. Attach the four decorative corner pieces to the four decorative side panels, securing them with 4x16 screws.



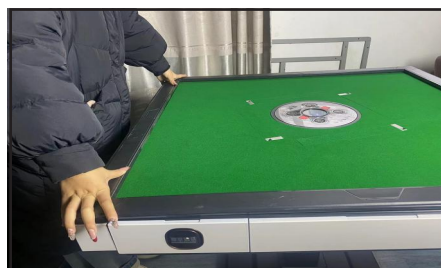
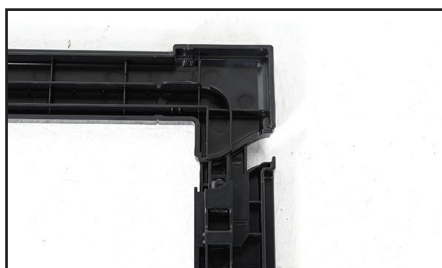
5. Remove the screws from the fixing holes around the main unit's core. Then, connect the four side panels to the main unit's linking tabs on all sides. Reuse the removed screws to sequentially assemble and attach the four decorative panels end-to-end around the main unit. (**Note: Ensure the side panels align correctly with the main unit's linking tabs.**)



6. Use M4x8 pointed screws to secure the connecting joints at the ends of all four side panels.



7. After connecting the four side strips end - to - end, install the assembled strips onto the mahjong table. (Tip: Once the side strips are successfully snapped into the decorative panel, press firmly to ensure they are fully secured.)



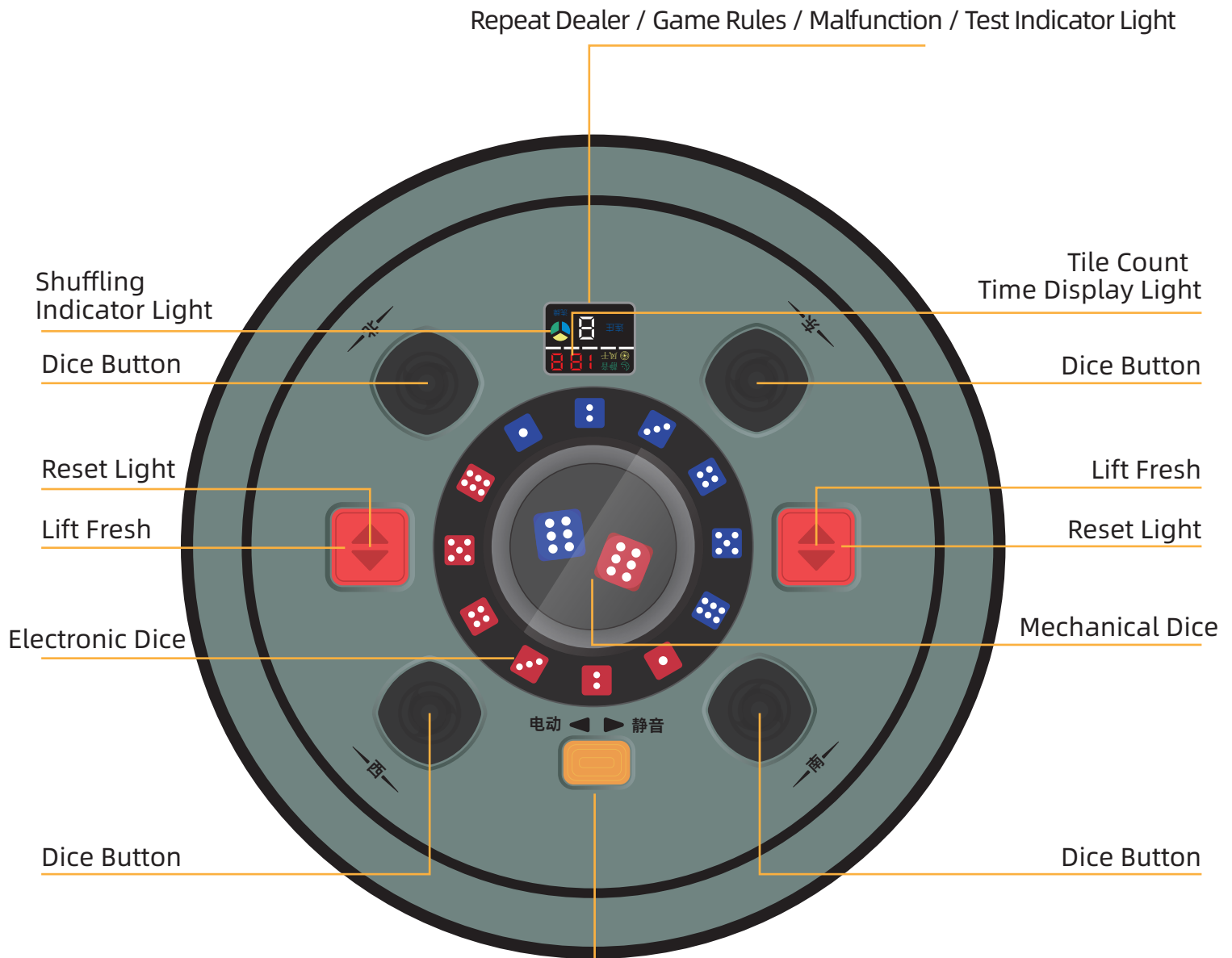
IV. Usage Instructions

1. Mahjong Machine Precautions

1. Do not reach inside the turntable to avoid finger injuries.
2. Do not lift the tabletop while the mahjong machine is operating to prevent accidents.
3. Never insert hands into any internal part of the machine while it is powered on to avoid electric shock or sudden mechanical movement causing harm.
4. Do not allow children to play with hard mahjong tiles to prevent injury or accidental ingestion.
5. This mahjong machine is intended solely for healthy recreational gaming and must not be used for gambling.

Important Notice: For entertainment purposes only. Do not use for gambling.

2. Introduction to the Operation Panel Functions



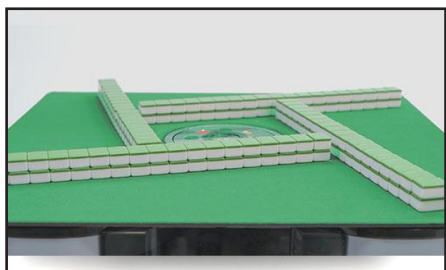
★ Mechanical Dice / Electronic Dice Toggle Key

3. Mahjong Table Operating Panel Instructions

1. Ensure the machine's power is turned off, then plug the power cord into a properly grounded outlet.
2. This machine has a power-off memory function. Before shipping, the tile carrier strips are lowered to the lowest position, and no tiles remain inside. When you turn on the power, the machine resumes operation, and the carrier strips automatically rise to the highest position. At this point, the machine is in a "no tiles" state.
3. Press both lift keys simultaneously to raise the center operating panel, then pour the first set of mahjong tiles into the shuffling area.
 - A. The number of tiles poured in must match the quantity indicated by the current gear setting. Do not add more or fewer tiles (For details on gear adjustment, see page 9, item 6)
 - B. Only use the dedicated mahjong tiles provided with the machine. Do not use other tiles or place foreign objects in the shuffling area.
4. Press any lift key again to lower the operating panel. The tile shuffler will start working, and the shuffling indicator light will blink.
5. Once the shuffling light stays steadily lit, it means shuffling is complete. Press any lift key to raise the panel again, then pour in the second set of tiles (same quantity as the first).
6. Press any lift key once more to lower the panel. The first set of tiles will rise to the table, while the second set remains inside for shuffling.
7. The game can now begin. Press the dice button, and the dice will roll randomly. Release the button to let the dice stop naturally.

[Tip: Hold the Mechanical Dice / Electronic Dice Toggle Key for about 5 seconds to switch between motorized mode (mechanical dice) and silent mode (electronic dice).]
8. Repeat steps 5-7 to continue gameplay.

4. Mahjong Machine Tile Hiding Function (Must be used in non-folded state)



1. When the mahjong machine has finished dealing tiles and the internal shuffling is complete.



2. Press any "Jiang" (win) button to raise the control panel, then push the tiles on the table into the machine.



3. Long-press the two opposite dice buttons on the control panel to lower it.

5. Mahjong Machine Folding Function

Note: Before folding, ensure all tiles from both sets are raised to the table and removed.



1. Push the latches on both sides of the table's underside to release the lock.



2. Detach the latches from the fixed mounting plates on the corner brackets.



3. Fold the tabletop upward and store it in a suitable position.

6.6. Mahjong Game Mode Setting

Note: Remove all tiles from the machine before adjusting the game mode.

Method1: Turn on the mahjong machine. The game mode display near the power button will show the current setting.

Step1: Within the first 10 seconds after powering on, use the two buttons below the display (Fig. 1) to switch modes. The left / right buttons adjust their corresponding digits.

Step2: After adjustment, wait ~5 seconds until the display stops flashing and a "beep" confirms the setting.

Step3: Press and hold the two opposite dice buttons on the control panel for ~3 seconds (Fig. 2). Release after the first beep – the machine will reset. A second beep indicates completion (Fig. 3).

Step4: Follow Step 3 on Page 8 (Control Panel Usage) to load both tile sets into the machine before playing.



Figure1

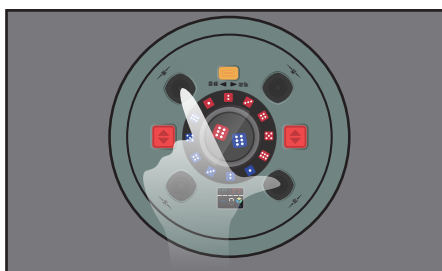


Figure2

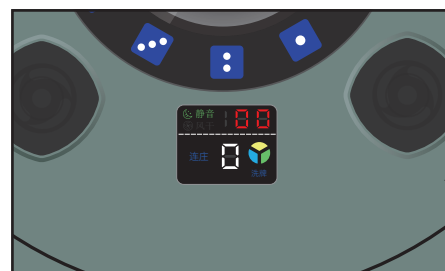


Figure3

Method2: First, allow the current set of tiles to finish shuffling. After hearing the "beep," follow the steps below:

Step1: Simultaneously press and hold any two adjacent dice buttons on the control panel for about 5 seconds (see Diagram 4). After the "beep," the machine enters block position adjustment mode. (At this point, the display shows the current block position number.)

Step2: Use the up/down buttons to increase or decrease to the desired block position number (see Diagram 5). (The block position numbers can be found in the block position table; pressing either the left or right up/down buttons is acceptable.)

Step3: Press any dice button to confirm the block position (see Diagram 6). The block adjustment is complete. (Any one of the four dice buttons can be pressed.)

Step4: Simultaneously press and hold the two corresponding dice buttons on the control panel for about 3 seconds (see Diagram 2). After the first "beep," release the buttons – the machine will start resetting. After the second "beep," the reset is complete (see Diagram 3).

Step5: Follow the instructions starting from step 3 in the "Method of Using the Mahjong Machine Control Panel" on page 8. After placing two sets of mahjong tiles into the mahjong machine, you can start the game.

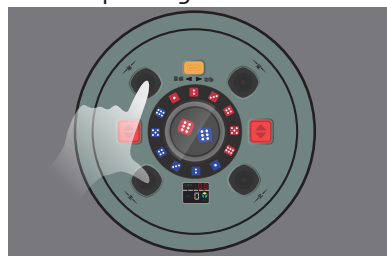


Figure4

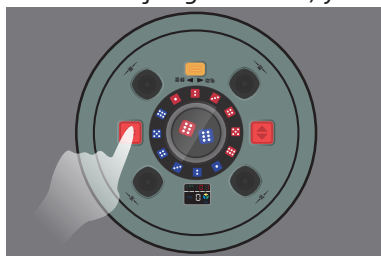


Figure5

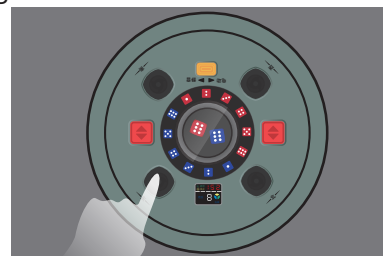


Figure6

Game Plan Digital Position Block Table

Blocking position	Number of Four - Sided Wall Sets				Total tiles count
	East	West	South	North	
00	0	0	0	0	0
01	19	19	19	19	152
02	18	18	18	19	148
03	18	18	18	18	144
04	18	18	18	17	142
05	17	17	17	18	140
06	17	17	17	18	138
07	17	17	17	17.5	137
08	17	16	17	17	136
09	16	16	16	17	132
10	16	16	16	16	128
11	16	16	16	15	126
12	15	16	15	16	124
13	15	15	15	15	120
14	14	15	14	15	116
15	14	14	14	14	112
16	13	14	14	14	110
17	13	14	13	14	108
18	18	18	18	0	108
19	13	13	13	13	104
20	17	17	17	0	102
21	13	13	13	12	102
22	12	13	12	13	100
23	17	17	16	0	100
24	16	16	16	0	96
25	12	12	12	12	96
26	11	11	11	11	88
27	14	14	14	0	84
28	10	11	10	11	84
29	10	10	10	12	84
30	12	12	12	0	72
31	9	9	9	9	72
32	9	8	9	8	68
33	9	9	9	0	54
34	9	9	8	0	52
35	6	6	6	7	50
36	10	0	10	0	40
37	5	5	5	5	40
38	9	9	0	0	36
39	9	0	9	0	36
40	6	6	6	0	36
41	20	20	20	20	160
42	19	19	19	18	150
43	17.5	17.5	17.5	17.5	140
44	16	16	16	17	130
45	14	15	14	14	114
46	18	19	19	0	112
47	14	14	14	13	110
48	14	13	14	13	108
49	13	14	14	13	108
50	17	17	17	3	108
51	16	18	16	0	100
52	12	12	12	13	98
53	11	12	11	12	92
54	15	14	15	0	88
55	10	10	10	10	80
56	9	9	9	10	74
57	17.5	9	9	0	71
58	9	9	9	8	70
59	17	17	0	0	68
60	8.5	8.5	8.5	8.5	68
61	8	8	8	8	64
62	16	0	16	0	64
63	16	16	0	0	64
64	9	6	6	6	54
65	13	14	0	0	54
66	8.5	8.5	8.5	1.5	54
67	8	8	8	3	54
68	7	7	7	6	54
69	9	8	9	0	52
70	8	8	8	2	52
71	6	7	6	7	52
72	12.5	0	12.5	0	50
73	8	8	8	1	50
74	5	5	5	6	42
75	10	10	0	0	40
76	17	3	0	0	40
77	5	4	5	4	36
78	18	0	0	0	36
79	17	1	0	0	36
80	4	5	4	5	36
81	8	8	1	1	36
82	4	4	4	4	32
83	8	8	0	0	32
84	8	0	8	0	32
85	16	0	0	0	32
86	14	0	0	0	28
87	10	0	0	0	20
88	9	0	0	0	18
89	2	1	2	1	12
90	1	1	1	1	8



This is the QR code for YOUTOBE's debug mahjong rules program, please scan me.
If you don't want to scan, please visit my website <https://youtube.com/shorts/uEf8NZTuEo?si=OsKYHFNFsU93-Vh3>

7.Introduction to Mahjong Rules

American Mahjong (Mah-Jongg), sometimes abbreviated as Maahj, refers to the standard way of playing Mahjong in the United States. The National Mah Jongg League (NMJL), established in 1937, publishes official rules each year and updates the standard winning hands.

Using Tiles

There are a total of 152 Mahjong tiles in the United States, as listed below.

Circles(Dots)

The circle (dots) suit consists of tiles numbered from 1 to 9, with four copies of each, totaling 36 tiles.



For the convenience of American players, many English tile labels will include numerals indicating the number of bamboo tiles.

Bamboos(bams)

consist of tiles numbered from 1 to 9. Each type has four copies, making a total of 36 tiles.



The 1 Bamboo tile features various bird patterns, commonly including sparrows, peacocks, cranes diving downward, and others. For the convenience of American players, many English sets include Arabic numerals to indicate the number of Bamboo.

Characters (craks):

The Character suit consists of tiles numbered from 1 Character to 9 Character, with four identical tiles for each number, totaling 36 tiles.



For the convenience of American players, many English-marked tiles will display numerals indicate the tile's value

Winds

The wind tiles (Winds) consist of four types: East, South, West, and North, with four identical tiles for each, totaling 16 tiles.



For the convenience of American players, many English tile markings use abbreviations: E 東 (for East), S 南 (for South), W 西 (for West), and N 北 (for North).

Three Dragons

The Three Dragons (dragons) are Red Dragon, Green Dragon, and White Dragon (also called Soap). Each type has 4 tiles, totaling 12 tiles. The Red Dragon may feature a red dragon pattern, and the Green Dragon may feature a green dragon pattern, avoiding the use of Chinese characters.



For the convenience of American players, many English labels on the tiles will read "Red" (or "R"), "Green" (or "G"), and "White" (or "Wh"). Some tiles may also be labeled with "C" (representing "中" - Zhong, the Chinese word for "Center"), "F" (representing "發" - Fa, "Green"), and "P" or "B" (representing "白" - Bai, "White") using Hong Kong pinyin.

Flower Tiles

Flower tiles come in two sets of four designs each (one tile per design), totaling eight. The NMJL (National Mah Jongg League) demo set uses: Spring, Summer, Autumn, Winter



However, standard mahjong sets typically feature: Spring (春)、Summer (夏)、Autumn (秋)、Winter (冬)、Plum.B (梅)、Orchid (蘭)、Chrys. (菊)、Bamboo (竹)。

Joker Tiles

American mahjong includes 8 joker tiles (also called "wildcards" or "universal tiles").



Terms and Rules

Playing tiles are usually placed on a rack, and the called or revealed tile combinations must be arranged above the rack.

Melds

A meld consists of a single tile, a pair, a pung (three of a kind), a kong (four of a kind), a quint (five of a kind), or a sextet (six tiles in a group). Chows (sequences) are not included.

Joker/WildCards

Joker or wildcards cannot be passed to other players during tile exchanges. When holding three or more, they can be used as a simple meld [3]. In the game, joker/wildcards that are discarded are considered as the last played tile.

Game Progress

There is no difference in scoring between the dealer (East) and the players (non-dealer); there is no "renchan" (continuous dealer) mechanism—only the East seat needs to be decided. After each player arranges their tiles into a wall (19 stacks), the dealer uses two dice to determine the starting point for the wall. Each player then draws 13 tiles (East draws 14). Once the hands are organized, the game proceeds through three stages of tile discarding, usually conducted twice, with the second round in reverse order.)

1. Give three unwanted tiles from your hand to the player on your left, then take three tiles from the player on your right.
2. Give three unwanted tiles to the player across from you, then take three tiles from that player.
3. Give three unwanted tiles to the player on your right, then take three tiles from the player on your left.

After exchanging, players may negotiate with their partner to exchange up to three more tiles.

The game continues until all tiles in the wall are drawn or a player declares a win (complete hand). There are no concealed kongs or added kongs; exposed kongs do not draw additional tiles. After a player discards a tile, all players may call for a win or other actions.

Scoring Method

The NMJL (National Mahjong League) publishes an official rule manual annually, and winning hand patterns evolve each year. Additionally, winning hand patterns are not limited to the traditional "Four melds and a pair" but can include various combinations.

The minimum score for a winning hand is 25 points. When a player wins by "ron" (claiming a discarded tile), the discarding player must pay twice the points; the other players pay the points themselves. When winning by "tsumo" (self-drawing the winning tile), the other three players each pay twice the points.

Tip: For detailed local rules and gameplay nuances, please purchase the official rule cards through the Mahjong League's authorized channels.

V. Troubleshooting and Feedback



Control Panel Error Codes Reference Table

Troubleshooting Items	
0	Long Time No-Tile Error
1	Dealer Unit Motor or Sensor Malfunction
2	Cable Motor or Sensor Malfunction
3	Door Motor or Sensor Malfunction
5	Low Voltage Error
7	Center Lift Motor or Sensor Malfunction
9	Motor Over-current or Short Circuit Error

Dear Customer, When your Mahjong machine encounters a malfunction or experiences tile jams, **to help us resolve the issue more efficiently**, please.

cooperate by following these steps:

First, promptly take photos or record videos of the displayed error messages or fault codes using your mobile phone. This will help us quickly and accurately diagnose the problem.

Second, you can visit our YouTube channel and look for troubleshooting videos related to the specific issue. Many common problems can be resolved by following the guidance provided there.

If the problem persists after following the instructions on our website, please send the videos or photos of the fault, along with the fault codes, to our email address. After sending, kindly be patient; we will contact you as soon as possible.

Thank you for your understanding and cooperation. We wish you a pleasant gaming experience!

Youtube: <https://youtube.com/@wanglei-r5g?si=Al8i6aYnvcLa1Se>

E-Mail: 270654282@qq.com phone numbers 5512038517 and 4016007053