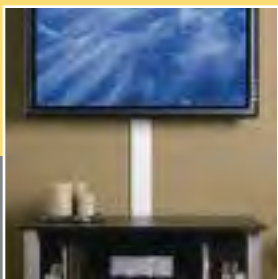


# WIRING PROJECTS MADE EASY<sup>®</sup>



 **legrand**<sup>®</sup>

Wiremold



DO-IT-YOURSELF  
SOLUTIONS



FOR CORD  
ORGANIZING  
AND SURFACE  
WIRING.

# DO-IT-YOURSELF SOLUTIONS FOR CORD ORGANIZING AND SURFACE WIRING.

Cleaning up wires and cables. Adding power around your home. They don't have to be intimidating projects. Just use surface wiring solutions from Legrand/Wiremold: the easy, non-obtrusive way to conceal wires and cables or add outlets, switches, lights, and ceiling fans. There's no need to tear open walls or fish for wires. Wiremold® products install quickly and easily on walls, floors, and ceilings. And since all hard-wired Wiremold products are UL-approved, you can be sure your home is safe.

## CONTENTS

### CORD ORGANIZING

(Hide and Organize Cords and Cables)

- Flat Screen TV Cord Cover
- CornerMate™
- CableMate™
- CordMate® II
- CordMate®
- Corduct®

### SURFACE WIRING

(Extend Power, Audio, Phone and Data Service)

- Plugmold®
- Plugmold® Tough
- Metal Raceway
- Nonmetallic Raceway

### APPLICATION/SELECTION GUIDE

### WIRING PROJECT PLANNER



## CORD ORGANIZING

# FLAT SCREEN TV

## Cord Cover Kits

The flat out easy way to hide wall mounted flat screen TV wires and cables.

Our new Flat Screen TV Cord Cover Kits make concealing the multitude of wires and cables dangling from flat screen TVs a snap. Base and cover can be cut to fit, then painted to blend seamlessly into any wall. And the snap-on/snap-off cover makes adding additional wires easy.



48" L x 3 1/2" W x 5/8" H  
1200mm L x 19mm W x 89mm H



### TOOLS YOU'LL NEED:

- Tape measure
- Phillips head screwdriver
- Fine tooth hacksaw
- Level

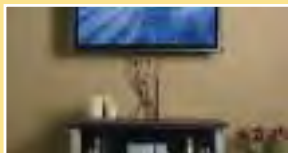
## FLAT SCREEN COVER parts checklist:



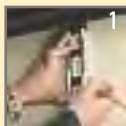
**CMK30 Flat Screen TV Cord Cover Kit**  
30" channel with pre-drilled holes for easy installation.  
Mounting hardware



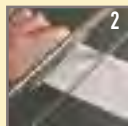
**C30 White Flat Screen TV Cord Cover Kit**  
48" channel with pre-drilled holes for easy installation.  
Mounting hardware



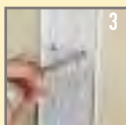
## Easy to install:



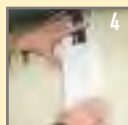
1  
Measure the wall to determine cover length.



2  
Cut cord cover to size.



3  
Using provided screws and anchors, mount base to wall.



4  
Lay cables and snap cover over base.

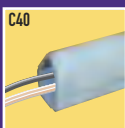
## CORD ORGANIZING

# CORNERMATE™

## Cord Organizers

Hide and organize home entertainment cabling.

CornerMate Cord Organizers are perfect for concealing audio or home theater cords in corners. Peel and press installation is quick and easy. Cover reverses for your choice of concave or convex profile. Paint CornerMate to match your walls. Designed to work with CableMate™ and CordMate® II systems for complete cable management.



60" L x 1 1/2" W x 5/8" H  
1524mm L x 38.1mm W x 16mm H



CornerMate Shown with CableMate baseboard.

### TOOLS YOU'LL NEED:

- Phillips head screwdriver
- Utility knife
- Fine tooth hacksaw

## CORNERMATE parts checklist:



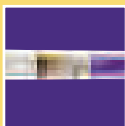
**CMK40 CornerMate™ Cord Cover Kit**  
4 pieces 30" channel - C40  
Transition fittings for use with CableMate™ Kit (CMK90) or CordMate® II Kit (CMK50)



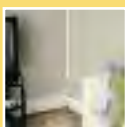
**C40 White 5' Channel**  
Reversible cover, easy peel and press installation, paintable and stainable.



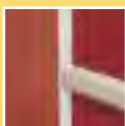
**C43 White 3-Way Fitting**  
For extending cabling from vertical to left and right horizontal.



**C4050 Home Entertainment Cord Cover Kit**  
4 48" sections of CordMate II  
3 48" sections of CornerMate  
2 CordMate II transition fittings  
2 CordMate II couplings



**Home Entertainment Cord Cover Kit**



**CornerMate shown with CableMate chair rail**



**C451 White CordMate II Connector**  
Transition fitting to go from CordMate II channel running horizontally to CornerMate.

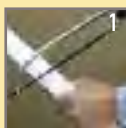


**C47 White 2-Way Fitting**  
For extending cabling from vertical to right or left horizontal.

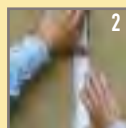


**C491 White CableMate C900 Connector**  
Transition fitting to go from CableMate chair rail to CornerMate.

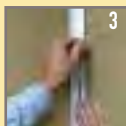
## Easy to install:



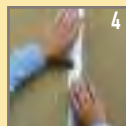
1  
Cut CornerMate to size.



2  
Mount base to wall.



3  
Insert wire.



4  
Snap on cover.

## CORD ORGANIZING

# CABLEMATE™

## Cord Organizers

Hide and organize home computing and home entertainment cabling.

CableMate Cord Organizers provide high capacity cable management in decorator chair rail or baseboard designs. Three internal channels provide additional cord organization. Knock-outs on end caps allow easy cord entry and exit. Paintable.



C800



C900



60" L x 5/16" W x 7/8" H

1524mm L x 79.4mm W x 22.2mm H



### TOOLS YOU'LL NEED:

- Phillips head screwdriver
- Utility knife
- Fine tooth hacksaw

## CABLEMATE parts checklist:



### CMK90 CableMate™ Chair Rail Kit

2 pieces 30" channel - C900  
2 end caps  
1 exit fitting - C92  
1 cover clip - C99  
Mounting screws



### C900 White Chair Rail Channel w/2 End Caps

5' chair rail cord organizer comes with end caps, screws, and anchors.



### C800 White Baseboard Channel w/2 End Caps

5' baseboard cord organizer comes with end caps, screws, and anchors.



### C92 White Chair Rail Cord Opening

Allows cord exit at any point along the chair rail.



### C82 White Baseboard Cord Opening

Allows cord exit at any point along the baseboard.



### C99 White Chair Rail Coupling

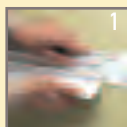
Covers adjoining sections of chair rail.



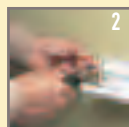
### C89 White Baseboard Coupling

Covers adjoining sections of baseboard.

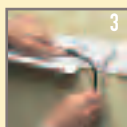
## Easy to install:



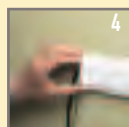
1  
If using cord opening, determine location. Cut channel as needed and install cord opening base.



2  
Mount channel to wall using screws through the guide holes.



3  
Lay cords through the compartment.



4  
Snap hinged cover shut and slide end cap over end of channel.

## CORD ORGANIZING

# CORDMATE® II

## Cord Channel

Perfect for concealing multiple cords, wires, and cables.

Especially suited for covering home entertainment wires, speaker cables, TV/video cabling, and home office wiring. Self-adhesive backing makes for easy installation. Stylish design complements any interior setting. Paintable.



60" L x 1" W x 1/2" H

1542mm L x 25mm W x 12.7mm H



### TOOLS YOU'LL NEED:

- Tape measure
- PVC cutter or fine tooth hacksaw

## CORDMATE II parts checklist:



### CMK50 CordMate® II Cord Cover Kit

- 4 pieces 30" channel - C50
- 3 couplings - C59
- 1 T-fitting - C51
- 2 flat elbows - C56
- 1 inside elbow - C57
- 1 outside elbow - C58



### C210 White CordMate® II Kit

- 12' of cord channel (3 sections, 4' long)
- 2 flat elbows
- 1 inside elbow
- 1 outside elbow
- 2 couplings
- 1 T-fitting



### C50 White Wire Channel

Covers multiple cord bundles.



### C53 White Data Comm Box

For mounting phone, fax, cable and audio connections (not for power).



### C56 White Flat Elbow

For making a left or right 90° turn on a flat surface.



### C57 White Inside Elbow

For making a 90° turn around an inside corner from wall-to-wall or wall-to-ceiling.



### C58 White Outside Elbow

For making a 90° turn around an outside corner.



### C51 White T-Fitting

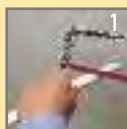
For installation requiring 3-way branching including 90° angle.



### C59 White Coupling

For concealing seams where channel sections meet.

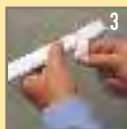
## Easy to install:



1  
Cut CordMate II to size.



2  
Lay in wire. Snap closed.



3  
Peel off tape backing and attach to wall.



4  
Finish by attaching components where needed.

## CORD ORGANIZING

# CORDMATE®

## Cord Channel

Quick, clean way to enclose a single cord or cable.

CordMate Cord Channel is streamlined to blend with any décor. Great for concealing phone wires, lamp, and extension cords. Perfect for family rooms or bedrooms. Self-adhesive backing makes it simple to install on a baseboard or wall. Paintable.



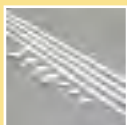
60" L x 3/8" W x 1/2" H  
1524mm L x 8.9mm W x 12.7mm H



### TOOLS YOU'LL NEED:

- Tape measure
- Fine tooth hacksaw

## CORDMATE parts checklist:



**CMK10 CordMate® Cord Cover Kit**  
4 pieces 30" channel - C10  
3 couplings - C10  
2 flat elbows - C16  
1 inside elbow - C17  
1 outside elbow - C18



**C110 White & C100 Ivory CordMate® Kit**  
9' of wire channel (3 sections, 3' long)  
2 couplings  
1 inside elbow  
1 outside elbow  
2 flat elbows



**C10 White & C1 Ivory Cord Channel**  
Covers small diameter cord.



**C16 White & C6 Ivory Flat Elbows**  
For making a left or right 90° turn on a flat surface.



**C17 White & C7 Ivory Inside Elbows**  
For making a 90° turn around an inside corner from wall-to-wall or wall-to-ceiling.

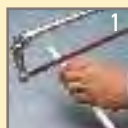


**C18 White & C8 Ivory Outside Elbows**  
For making a 90° turn around an outside corner.



**C19 White & C9 Ivory Coupling**  
For concealing seams where channel sections meet.

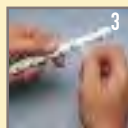
## Easy to install:



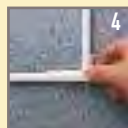
1  
Cut CordMate to size.



2  
Lay in wire. Snap closed.



3  
Peel off tape backing and attach to wall.



4  
Attach components as necessary.

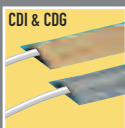
## CORD ORGANIZING

# CORDUCT®

## Overfloor Cord Protector

The safe and easy way to hide cords on the floor.

Corduct Cord Protector conceals cords while creating a smooth, trip-free surface. Applies to any flooring surface with pressure-sensitive tape (included with product). Cuts to any length with scissors or utility knife.



2 1/2" W x 7/16" H x 1/2" W cord opening  
64mm W x 11.4mm H x 12.7mm W cord opening



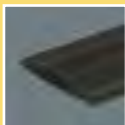
### TOOLS YOU'LL NEED:

- Tape measure
- Scissors or utility knife

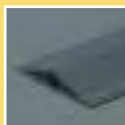
## CORDUCT parts checklist:



**CDI-5**  
Ivory 5' cord protector  
**CDI-15**  
Ivory 15' cord protector  
**CDI-50**  
Ivory 50' cord protector



**CDB-5**  
Brown 5' cord protector  
**CDB-15**  
Brown 15' cord protector  
**CDB-50**  
Brown 50' cord protector

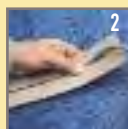


**CDG-5**  
Gray 5' cord protector  
**CDG-15**  
Gray 15' cord protector  
**CDG-50**  
Gray 50' cord protector

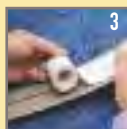
## Easy to install:



1  
Cut to length.



2  
Insert cords.



3  
Attach tape and adhere to floor.

## SURFACE WIRING

# PLUGMOLD®

## Multi-Outlet Strips

Power where you need it.

Plugmold multi-outlet strips deliver power where you need it. Simply mount, plug into an existing power source, and you're done. Great for the home workshop. Perfect for "invisible" outlets beneath a kitchen cabinet. The easy way to add 6 - 10 outlets.



### TOOLS YOU'LL NEED:

- Tape measure
- Phillips head screwdriver

## PLUGMOLD parts checklist:

### HARD-WIRED STRIPS\*



**V20GB306+ Ivory Multi-outlet Strip**  
36" L x 1 9/32" W x 3/4" H  
914.4mm L x 32.5mm W x 19.1mm H  
6 outlets.

**V20GB506+ Ivory Multi-outlet Strip**  
60" L x 1 9/32" W x 3/4" H  
1542mm L x 32.5mm W x 19.1mm H  
10 outlets.

### CORD-ENDED STRIPS



**PM36C Ivory Multi-outlet Strip**  
40" L x 1 9/32" W x 3/4" H  
1016mm L x 32.5mm W x 19.1mm H  
6 outlets and circuit breaker. 6' cord.

**PM48C Ivory Multi-outlet Strip**  
52" L x 1 9/32" W x 3/4" H  
1320mm L x 32.5mm W x 19.1mm H  
8 outlets and circuit breaker. 6' cord.

\*Can be fed by Wiremold metal raceway.

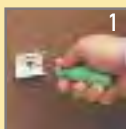
### HARD-WIRED KITS



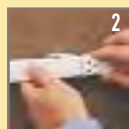
**PMKW306, white**  
**PMKB306, black**  
**PMKS306, stainless**  
**PMKV306, ivory**

Each of these kits combines a 36"6 outlet strip, a flush plate adaptor, an end feed fitting, and accessory pack.

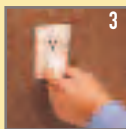
## Easy to install cord-ended strips:



Mount bracket to wall.



Attach Plugmold strip.



Plug it in.

## SURFACE WIRING

# PLUGMOLD® TOUGH

## Power Strips

**Tough looks. Easy installation.  
The power you need.**

They don't just look tough. They are tough. Plugmold Tough Multi-Outlet Strips are easy to handle and easy to install. Genuine diamond-plate aluminum looks great on workbenches, in garages, or anywhere you need to access up to 10 power outlets.



### TOOLS YOU'LL NEED:

- Phillips head screwdriver
- Tape measure

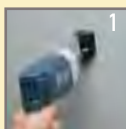
## PLUGMOLD TOUGH parts checklist:



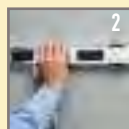
**PM48TC Diamond-plate Multi-outlet Strip**  
48" long with 10 outlets and circuit breaker. 6' cord.  
48" L x 1<sup>29</sup>/<sub>32</sub>" W x 7<sup>7</sup>/<sub>8</sub>" H  
1219.2mm L x 48mm W x 22.2mm H



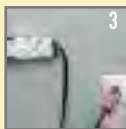
## Easy to install:



1  
Mount bracket to wall.



2  
Attach Plugmold Tough Strip.



3  
Plug it in.

## SURFACE WIRING

# METAL RACEWAY

Extra Durable Surface Wiring

Add or extend power, phone, or data lines.

Wiremold Metal Raceway is the raceway of choice for heavy-duty applications including brick walls, concrete, or garages. Available in standard and high capacity to accommodate most uses. Makes running power a snap wherever you need it. Paintable to accent your décor.

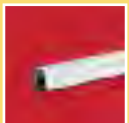


60" L x 3/4" W x 1 1/2" H  
1542mm L x 19.1mm W x 13.5mm H

### TOOLS YOU'LL NEED:

- Standard and long-nose pliers
- Standard and Phillips head screwdrivers
- Tape measure • Wire snips
- Fine tooth hacksaw • Metal file

## METAL RACEWAY parts checklist:



### Wire Channel

Carries wire from starter box to downstream outlet boxes, switches, and fixtures.  
BW11(5') 700WH+(10') White  
B1(5') V500+(10') Ivory



### Starter Box

Fits over existing single-gang outlet box to feed power as the starting point for your system (1" deep).  
BW5 White, B5 V5751 Ivory



### Outlet Box

For most residential wiring devices (1" deep).  
BW2 White, B2 V5748S Ivory



### Deep Outlet Box

For standard or oversized switches or outlets – dimmers or GFCIs (1 3/8" deep).  
BW3 White, B3 V5747 Ivory



### 2-Gang Outlet Box

Expanded capacity for extra outlets or outlet/switch combinations (1 3/8" deep).  
BW32 White, B32 V5747-2 Ivory



### Extra Deep Outlet Box

For oversized wiring devices such as fan speed controls, dimmer switches, and GFCIs (1 3/4" deep).  
BW35 White, B35 V5748 Ivory



### Circular Fan Box

Bring power to fans and other round based fixtures. Maximum fixture weight 50 lbs.  
BW4F White, B4F V5738AF Ivory



### Flat Elbow

For making a left or right 90° turn on a flat surface.  
BW6 White, B6 Ivory



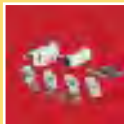
### Inside Elbow

For making a 90° turn around an inside corner from wall-to-wall or wall-to-ceiling.  
BW7 White, B7 Ivory



### Outside Elbow

For making a 90° turn around an outside corner.  
BW8 White, B8 Ivory



### Accessory Pack

Mounting components for wire channel, including metal clips, straps, and fittings.  
BW9-10-11 White  
B9-10-11 Ivory



### Twist Elbow

For making a 90° turn around an outside corner while changing channel orientation.  
BW13-14 White, B13-14 Ivory



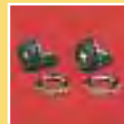
### T-Fitting

For installations requiring 3-way branching including 90° angle.  
BW16 White, B16 Ivory



### Fitting

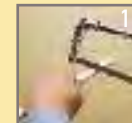
For transitioning from metal raceway to 1/2" conduit or from any steel box with 1/2" knockout.  
BW17 White, B17 Ivory



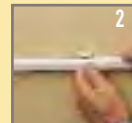
### 1/2" Box Connector

For connecting raceway to conduit boxes with 1/2" knockout.  
B81

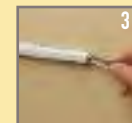
## Easy to install:



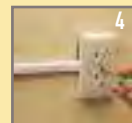
After installing starter box, cut metal raceway to size.



Mount raceway to wall using clips/couplings.



Fish wire through raceway. Connect fittings and devices as required.



Attach covers and install faceplates.

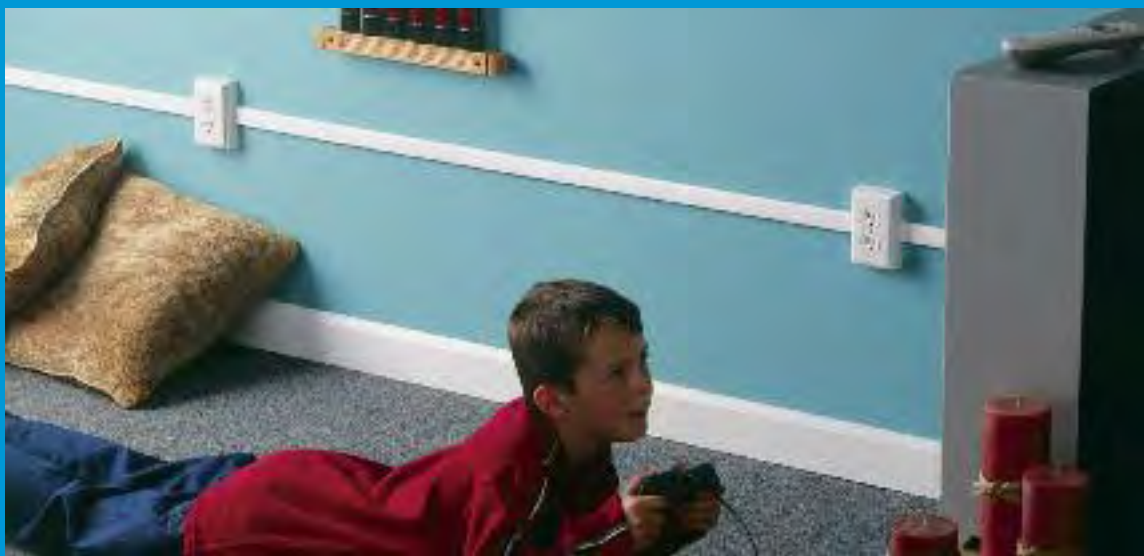
## SURFACE WIRING

# NONMETALLIC RACEWAY

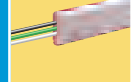
## On-Wall Wiring

Add or extend power, phone, or data lines.

Wiremold Nonmetallic Raceway features a sleek profile and easy to install design, making this a perfect solution for do-it-yourself installations. Great for adding power or communications to rec rooms or home offices. Paintable.



NMW1



60" L x 1 5/16" W x 7/16" H

1524mm L x 33mm W x 11.1mm H

### TOOLS YOU'LL NEED:

- Standard and long-nose pliers
- Standard and Phillips head screwdrivers
- PVC cutter or fine tooth hacksaw
- Tape measure • Wire snips • Utility knife

## NONMETALLIC RACEWAY parts checklist:



### Wire Channel

Carries wire from starter box to downstream outlet boxes, switches, and fixtures.  
NMW1 White, NM1 Ivory



### Circular Fixture Box

For bringing power to a light fixture, ceiling fan,\* smoke detector, or other round based fixtures.  
NMW4 White, NM4 Ivory



### T-Fitting

For installations requiring 3-way branching including 90° angle.  
NMW11 White, NM11 Ivory



### Starter Box

Fits over existing single-gang outlet to feed power as the starting point for your system (1" deep).  
NMW2 White, NM2 Ivory



### Flat Elbow

(2 per card) For making a left or right 90° turn on a flat surface.  
NMW6 White, NM6 Ivory



### Conduit Connector

For transitioning from nonmetallic raceway to conduit.  
NMW17 White, NM17 Ivory



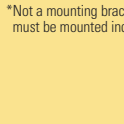
### Deep Outlet Box

Accommodates most commercial grade wiring devices (1 3/8" deep).  
NMW3 White  
NM3 Ivory



### Inside Elbow

For making a 90° turn around an inside corner from wall-to-wall or wall-to-ceiling.  
NMW7 White, NM7 Ivory



### Outside Elbow

For making a 90° turn around an outside corner.  
NMW8 White, NM8 Ivory



### 2-Gang Outlet Box

Expanded capacity for extra outlets or outlet/switch combinations (1 3/8" deep).  
NMW3-2 White, NM3-2 Ivory



### Accessory Pack

Mounting components for NM1 wire channel, including screws and anchors, wire clips, and joint cover.  
NMW910 White  
NM910 Ivory

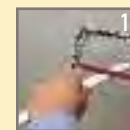


### Extra Deep Outlet Box

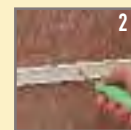
For oversized wiring devices such as fan speed controls, dimmer switches and GFCIs (1 3/4" deep).  
NMW35 White, NM35 Ivory

\*Not a mounting bracket. Ceiling fans and fixtures over 10 lbs. must be mounted independently from circular fixture box.

## Easy to install:



1  
Cut nonmetallic raceway to size.



2  
Mount base to wall.



3  
Insert wire.



4  
Snap on cover.



Want to make an easy job even easier? Just use this convenient guide—it helps you find the right Wiremold product for your application, and provides installation tips, project checklists, and suggestions for a simple, do-it-yourself job.



# MAKE TOUGH WIRING PROJECTS EASY.

Use the chart below to determine which Wiremold solution is best for your application.

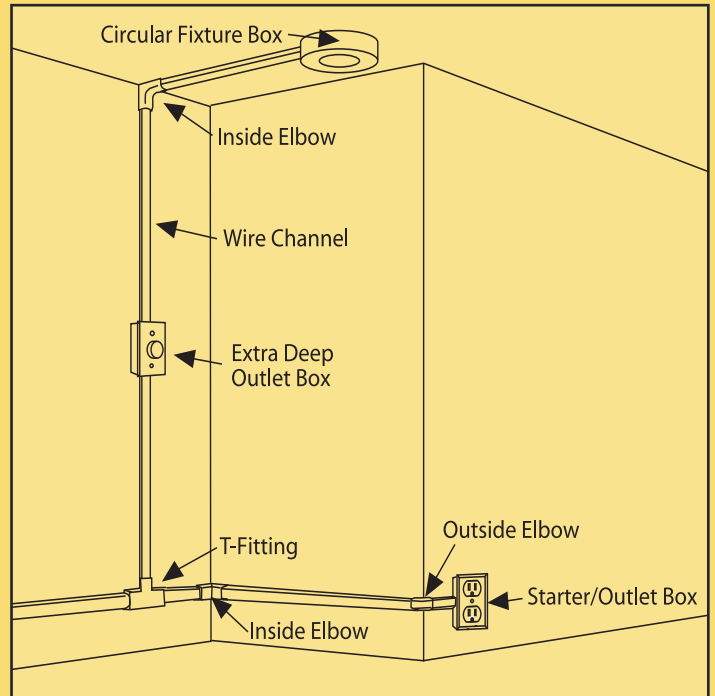
| APPLICATION SELECTION GUIDE | APPLICATION          | FLAT SCREEN COVER | CORNERMATE | CABLEMATE | CORDMATE II | CORDMATE | CORDUCT | PLUGMOLD TOUGH | PLUGMOLD | METAL RACEWAY | NONMETALLIC RACEWAY |
|-----------------------------|----------------------|-------------------|------------|-----------|-------------|----------|---------|----------------|----------|---------------|---------------------|
|                             | Home Theater Cabling | •                 | •          | •         | •           | -        | -       | -              | -        | -             | -                   |
|                             | Lamp Cords           | -                 | •          | •         | •           | •        | •       | -              | -        | -             | -                   |
|                             | Extension Cords      | -                 | •          | •         | •           | •        | •       | -              | -        | -             | -                   |
|                             | Phone Wire           | -                 | •          | •         | •           | •        | •       | -              | -        | -             | -                   |
|                             | Video Cable          | •                 | •          | •         | •           | -        | •       | -              | -        | -             | -                   |
|                             | Stereo Cables        | -                 | •          | •         | •           | -        | •       | -              | -        | -             | -                   |
|                             | Computer Cables      | -                 | •          | •         | •           | -        | •       | -              | -        | -             | -                   |
|                             | Power Wiring         | -                 | -          | -         | -           | -        | -       | •              | •        | •             | •                   |
|                             | Fan Wiring           | -                 | -          | -         | -           | -        | -       | -              | -        | •             | -                   |
|                             | Power Strip          | -                 | -          | -         | -           | -        | -       | •              | •        | -             | -                   |
|                             | On-wall              | •                 | •          | •         | •           | •        | -       | •              | •        | •             | •                   |
| Over-floor                  | -                    | -                 | -          | -         | -           | •        | -       | -              | -        | -             |                     |



Many Wiremold products can be painted to match your décor. Look for this symbol throughout the guide to see which products are paintable.

# WIRING PROJECT PLANNER

Use this guide as a reference for putting together your surface wiring system. Build your project parts list by first referring to the sample layout, then estimating the total length of wiring channel and individual components you'll need for your project.



## PROJECT TIPS

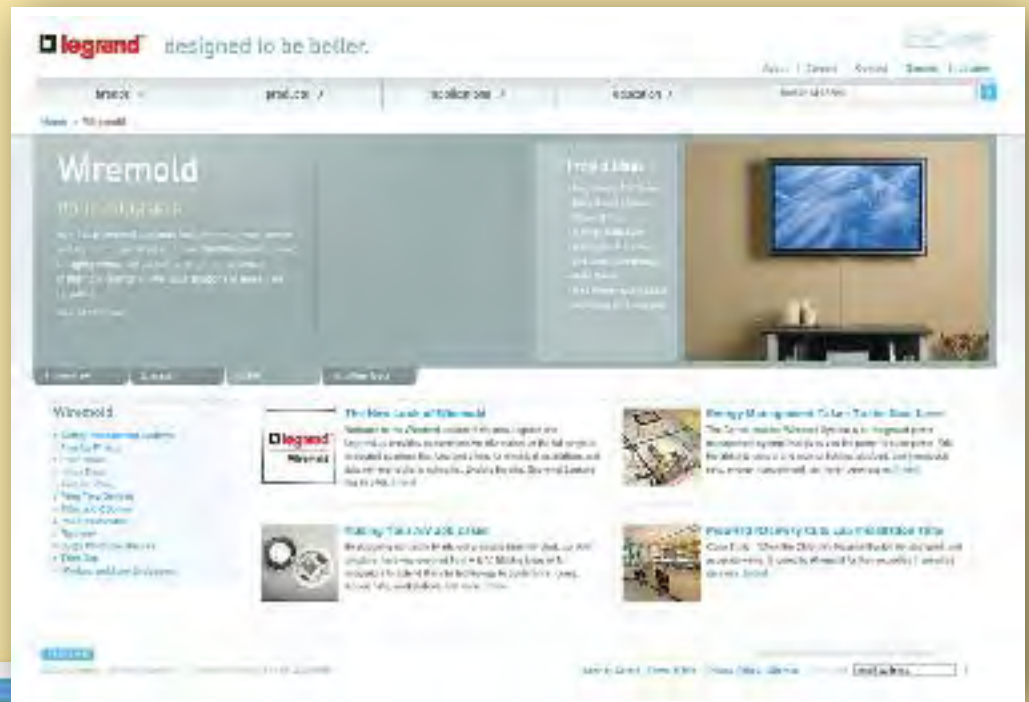
- Estimate the total length of your system and whether you have inside/outside corners, wall-to-wall or wall-to-ceiling runs.
- Determine type and number of additional outlet/switch boxes you need.
- Be sure to buy components from the same system (e.g., metal raceway, nonmetallic raceway, etc.).
- Before doing any electrical work, always turn off power to the circuit.

## FOR ON-WALL WIRING

| ITEM                      | PART # | # OF PIECES |
|---------------------------|--------|-------------|
| <b>WIRE CHANNEL</b>       |        |             |
| <b>Boxes</b>              |        |             |
| Starter/Outlet Box        | _____  | _____       |
| Deep Outlet Box           | _____  | _____       |
| Extra Deep Outlet Box     | _____  | _____       |
| Circular Fixture Box      | _____  | _____       |
| <b>Elbows</b>             |        |             |
| Flat Elbow                | _____  | _____       |
| Inside Corner             | _____  | _____       |
| Outside Corner            | _____  | _____       |
| <b>Fittings</b>           |        |             |
| T-Fitting                 | _____  | _____       |
| 1/2" Box Connector        | _____  | _____       |
| Conduit Connector/Fitting | _____  | _____       |
| Accessory Pack            | _____  | _____       |

# VISIT US ONLINE

For step by step installation videos, project tips, and to locate Wiremold retailers near you, go to [www.legrand.us/wiremold](http://www.legrand.us/wiremold)



Wiremold



---

## Wiremold

### **Legrand/Wiremold**

60 Woodlawn Street  
West Hartford, CT 06110  
Telephone: 1-800-617-1768  
Fax: 1-860-232-0175  
[www.legrand.us/wiremold](http://www.legrand.us/wiremold)

### **In Canada**

570 Applewood Crescent  
Vaughan, Ontario L4K 4B4  
Telephone: 1-800-723-5175  
Fax: 1-905-760-1733