

IMPORTANT SAFETY INSTRUCTIONS

When using electrical products, basic precautions should always be followed including the following:

a) **READ AND FOLLOW ALL SAFETY INSTRUCTIONS.**

- b) Do not use seasonal products outdoors unless marked suitable for indoor and outdoor use. When products are used in outdoor applications, connect the product to a Ground Fault Circuit Interrupting (GFCI) outlet. If one is not provided, contact a qualified electrician for proper installation.
- c) This seasonal use product is not intended for permanent installation or use.
- d) Do not mount or place near gas or electric heaters, fireplace, candles or other similar sources of heat.
- e) Do not secure the wiring of the product with staples or nails, or place on sharp hooks or nails.
- f) Do not let lamps rest on the supply cord or on any wire.
- g) Unplug the product when leaving the house, when retiring for the night, or it left unattended.
- h) This is an electric product-not a toy! To avoid risk of fire, burns, personal injury and electric shock, it should not be played with or placed where small children can reach it.
- i) Do not use this product for other than its intended use.
- j) Do not hang ornaments or other objects from cord, wire, or light string.
- k) Do not close doors or windows on the product or extension cords as this may damage the wire insulation.

- l) Do not cover the product with cloth, paper or any material not part of the product when in use.
- m) This product has a polarized plug (one blade is wider than the other) as a feature to reduce the risk of electric shock. This plug will fit in a polarized outlet only one way. If the plug does not fit fully in the outlet, reverse the plug. If it still does not fit, contact a qualified electrician. Do not use with an extension cord unless plug can be fully inserted. Do not alter or replace the plug.
- n) This product employs overload protection [fuse] A blown fuse indicates an overload or short-circuit situation. If the fuse blows, unplug the product from the outlet. Also unplug any additional strings or products that may be attached to the product. Replace the fuse as per the user servicing instructions (follow product marking for proper fuse rating) and check the product. If the replacement fuse blows, a short-circuit may be present and the product should be discarded.
- o) Read and follow all instructions that are on the product or provided with the product.

p) **SAVE THESE INSTRUCTIONS**

Use and Care Instructions

- a) When the product is placed on a live tree, the tree should be well maintained and fresh. Do not place on live trees in which the needles are brown or break off easily. Keep the tree holder filled with water.
- b) If the product is placed on a tree, the tree should be well secured and stable.
- c) Before using or reusing, inspect product carefully. Discard any products that have cut, damaged, or frayed wire insulation or cords, cracks in the lampholders or enclosures, loose connections, or exposed copper wire.
- d) When storing the product, carefully remove the product from wherever it is placed, including tree, branches, or bushes, to avoid any undue strain or stress on the product conductors

connections and wires.

e) When not in use, store neatly in a cool, dry location protected from sunlight.

User Servicing Instructions.

Replace the fuse

a) Grasp plug and remove from the receptacle or other outlet device. Do not unplug by pulling on cord.

b) Open fuse cover. Slide open fuse access cover on top of attachment plug towards blades.

c) Remove fuse carefully.

d) Risk of fire. Replace fuse only with 5 Amp, 125 Volt fuse (provided with product).

e) Close fuse cover. Slide closed the fuse access cover on top of attachment plug.

f) Risk of fire. Do not replace attachment plug. Contains a safety device (fuse) that should not be removed. Discard product if the attachment plug is damaged.



If connecting to a lighting string that does not have a Wattage (W) rating [found on the tag Within 6 inches of the plug] calculated the wattage as follows: Multiply the current (A) Which is on the flag-type tag by 120.

For Example: Lighting string is rated 120V, 60Hz, 0.2 Amps. $0.2 \times 120 = 24$ Watts Add the wattage of each light string together for a total of 432 watts or less. (Do not exceed 432 Watts).

CAUTION

1. Replace only with same type 1 Watt Max candelabra-base UL Classified lamps.

2. To reduce the risk of fire do not deliberately reposition either lampholder contact.

3. To reduce the risk of fire and electric shock: a) Do not install on trees having needles leaves or branch coverings of metal or materials which look like metal. and b) Do not mount or support strings in a manner that can cut or damage wire insulation.

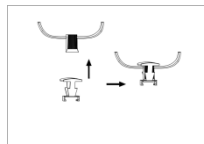
4. Do not hang the string lights while plugged it, if not the bulbs are easy broken.

5. Do not secure cords white staples or mails.

6. If changing to a new location, remove bulbs before installation

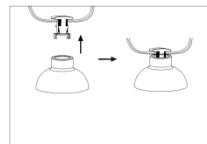
7. Inspect set up and product condition before each use.

Installation:



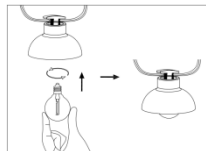
Step 1:

Install the plastic clips to the empty sockets



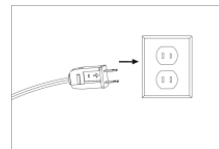
Step 2:

Press the clips and install the metal covers to the sockets .



Step 3:

Screw the bulbs into the empty sockets one by one.



Step 4:

Connect the AC plug to the power source and the lights are on.