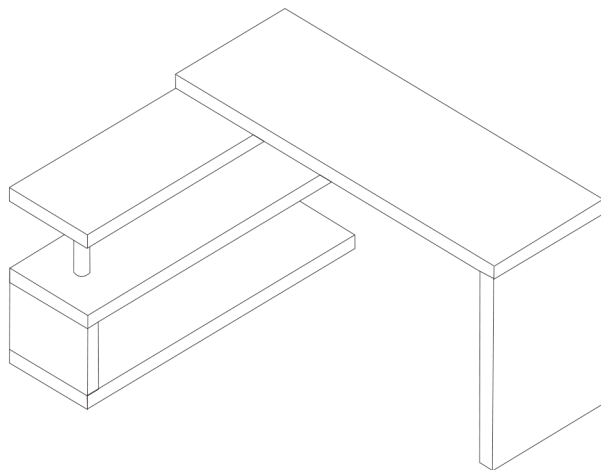


# Assembly Instructions



## Safety and Care Advice

**Important – Please read these instructions fully before starting assembly**

Check you have all the components and tools listed.

Remove all fittings from the plastic bags and separate them into their groups.

Keep children and animals away from the work area, small parts could choke if swallowed.

Make sure you have enough space to layout the parts before starting.

Assemble the item as close to its final position (in the same room) as possible.

Do not overtighten the nuts to avoid causing damage to the threads.



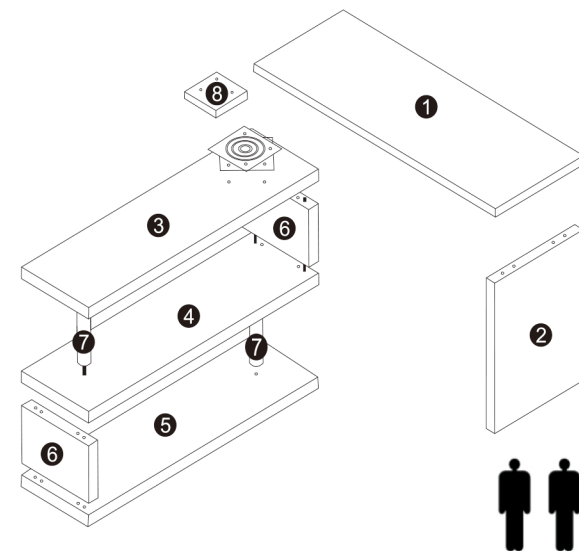
We do not recommend the use of power drill/drivers **for inserting screws**, as this could damage the unit. Only use hand screwdrivers and Allen keys.

## Care and maintenance

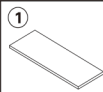
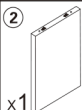
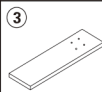
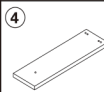
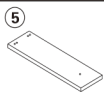
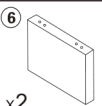
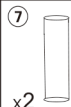
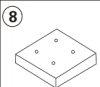
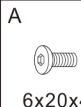
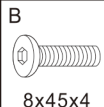
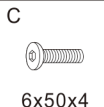
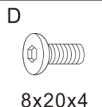
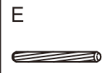
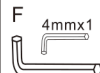
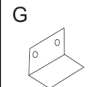
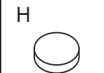




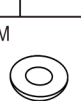
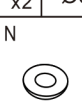
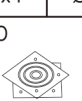
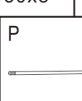
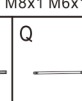
Only clean using a damp cloth and mild detergent, do no use bleach or abrasive cleaners.

From time to time check that there are no loose screws on this unit.

This product should not be discarded with household waste. Take to your local authority waste disposal centre.

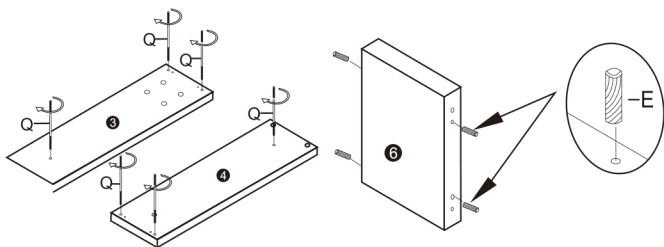


2 Person Build

 x1	 x1	 x1	 x1	 x1	 x2
 x2	 x1	 6x20x4	 8x45x4	 6x50x4	 8x20x4
 8x30x10	 4mmx1 5mmx1	 x2	 Ø35 x4	 Ø30x8	 M8x1 M6x1
 M8x8	 M6x4	 M8x20	 M6x12	 x1	 710mmX2
					 315mmX2

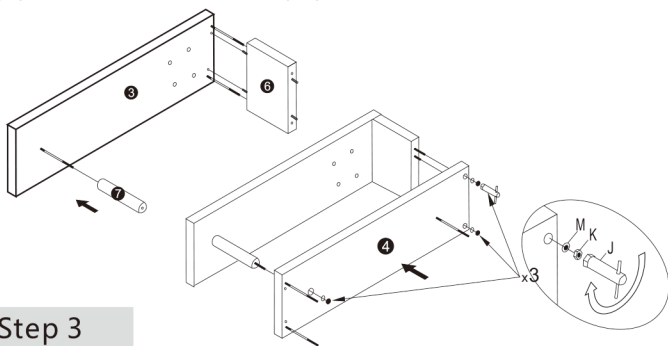
## Step 1

Install the threaded rods (Q) into the corresponding holes on the top board ③ and the side-shelf board ④. Then install the wooden dowels (E) in the corresponding holes on side-support board ⑥.



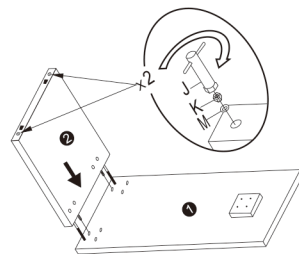
## Step 2

Assemble the side-support board ⑥, stainless steel pole ⑦ and the top board ③ together as shown. Then assemble the side-shelf board ④. Screw in and fix these pieces together using the spanner (J) provided, locking in place with nut (K) and metal washer (M).



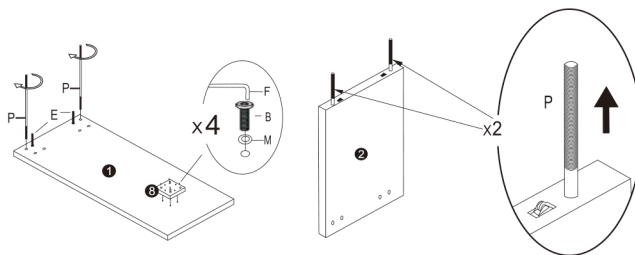
## Step 3

Using the same method as Step 2, assemble the bottom board ⑤, side-support board ⑥ and stainless steel pole ⑦ together. Add on the stick on the waterproof rubber washer H to the bottom of board ⑤.



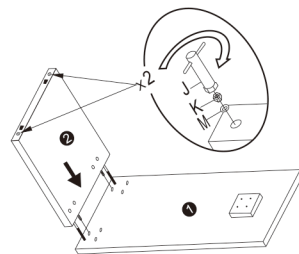
## Step 4

Install the screw rod (P) in the corresponding hole of the table top ① and then install the wooden dowel (E) at the corresponding hole. Then install the connecting board ⑧ at the corresponding hole of the back side from the table top, tighten and fix with spanner (F), screws (B) and metal washer (M).



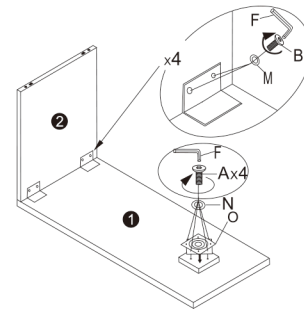
## Step 5

Assemble the table leg ② with table top ① together, tightening with the spanner (J), lock nut (K) and metal washer (M).



## Step 6

Install the angle support (G), fixing with spanner (F), screw (B) and metal washer (M), joining table leg ② and table top ① together. Then install the rotary block (O) at the corresponding hole of the connecting board, tighten it with spanner (F), screw (A) and washer (N).



## Step 7

Using 2 people assemble ①, ②, ③, ④ and ⑤ together. Turn the rotary key (O), aligning it with the hole position of side-top board ③, and fasten it with spanner (F), screw (C), washer (N) and spanner (J). Assembly complete.

