

Instruction Manual

INDOOR MANUAL CONTROL FIRE STOVE



Having Trouble?

Chat with us on your phone



Purchased your product online?

We would really appreciate it if you can share your experience with others by reviewing our product on the website from which you purchased.



Limited 1-Year Manufacturer Warranty on xbrand.us

Manufacturer warranty covers:

- Parts that are deemed defective within 30 day will be shipped free of charge.
- Any warranty claim after 30 days, will require shipping to be paid by the customer.

Any visible damage due to the neglect, misuse, or abuse will void the limited warranty of the product.

Purchased your product online?

We would really appreciate it if you can share your experience with others by reviewing our product on the website from which you purchased.



Contents

Contents	2
What is included	3
Assembly instructions	4
YouTube video instruction	5
Warranty	6

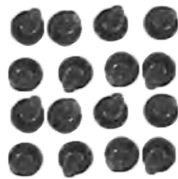
What is included



A. Stove

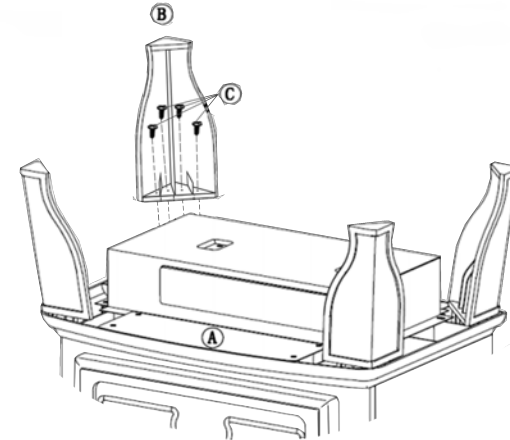


B. 4 x Legs

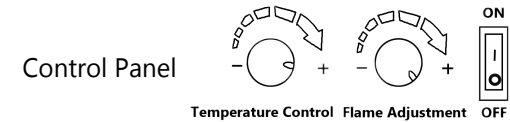


C. 16 x Screws

Assembly instructions



Turn Stove upside down and align holes in the leg with holes in the corner of stove frame. Thread screws through the holes in each leg and tighten securely with screwdriver. DO NOT over-tighten the screws.



For complete instruction, please visit our website or see additional instructions provided in the box.

