



RECTANGLE MIRROR

Thank you for your order!

Please note that each and every sale, be it an oil painting, canvas art print, metal art, wood art, designed clock or one of our textile items supports an artist and allows them to live through their passion.

Every creation started with an artists inspiration. A vision of what could be where nothing currently is. The deep desire to express one's own creativity and share it with the world. Through our many product lines, we allow artists and designers to express their ideas and creativity across many mediums.

Contact Us:

We are always happy to help! For product related questions, product damages or returns, Please contact us prior to returning to the store or online retailer.

HANGING INSTUCTIONS :

You will need:

Screw Driver

Measuring Tape

Screws
(included in your order)

Wall Anchors
(included in your order)

Pencil

Mirror Holders
(included in your order)

2x Bottom 2x TOP

Important :

The bottom and top mirror holders are not the same. The bottom holders are made of one solid piece.

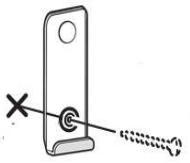
The top holders have a sliding system allowing the mirror to be adjusted & securely fitted.

X X

Step 1: Determine where you would like to hang your new mirror.

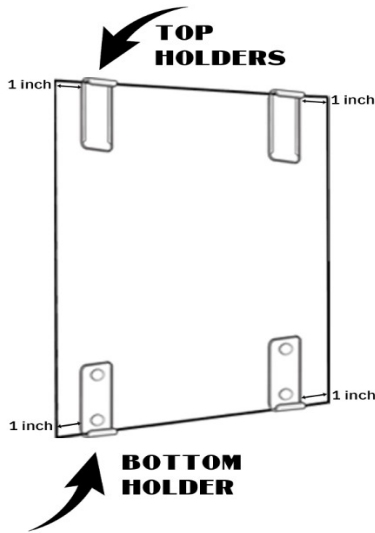
Using a measuring tape and a level, place the mirror anchors 1 inch in from the corners of the mirror.

X X



Screw Driver Measuring Tape Pencil

Start with the bottom 2 holders followed by the top 2 holders. Mark these placements on the wall using a pencil.



Wall Anchors
(included in your order)

Step 2 : Using a screw driver or 1/4" 6mm drill, drill a hole at each wall anchor mark, slightly smaller than the diameter of the wall anchor.



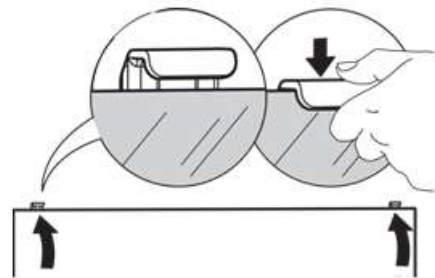
Step 3 : Insert one wall anchor into each hole until head of the anchor is flush with the surface of the wall.

Step 4 Bottom Holders : Fasten 1 screw through the bottom mirror holder into the anchor. Repeat for both bottom holders.



Step 5 Top Holders : IMPORTANT : These holders need to arrive flush at the top of the mirror. When they are closed, they will hold the mirror in place securely.

Step 6 : Place the mirror into the bottom mirror holders first. Then, adjust and click the top mirror holders into place.



IMPORTANT - MIRROR CLEANING INSTRUCTIONS :

Please only use a damp microfiber cloth to clean your mirror. Please do not use any kind of chemicals for cleaning as it may alter the design on the mirror.

WARNING - DISCLAIMER : While we diligently inspect every piece of artwork we create prior to it being packaged and use the highest-grade materials in our creation process, household temperatures, humidity, manipulation or other factors may affect the hold over time if the wall anchors are not used properly. While we will certainly replace any defective item, your use of this mirror artwork is at your sole risk as we expressly disclaims all warranties of any kind regarding property damage, bodily injury or all other damages that may result by the use of this mirror artwork.