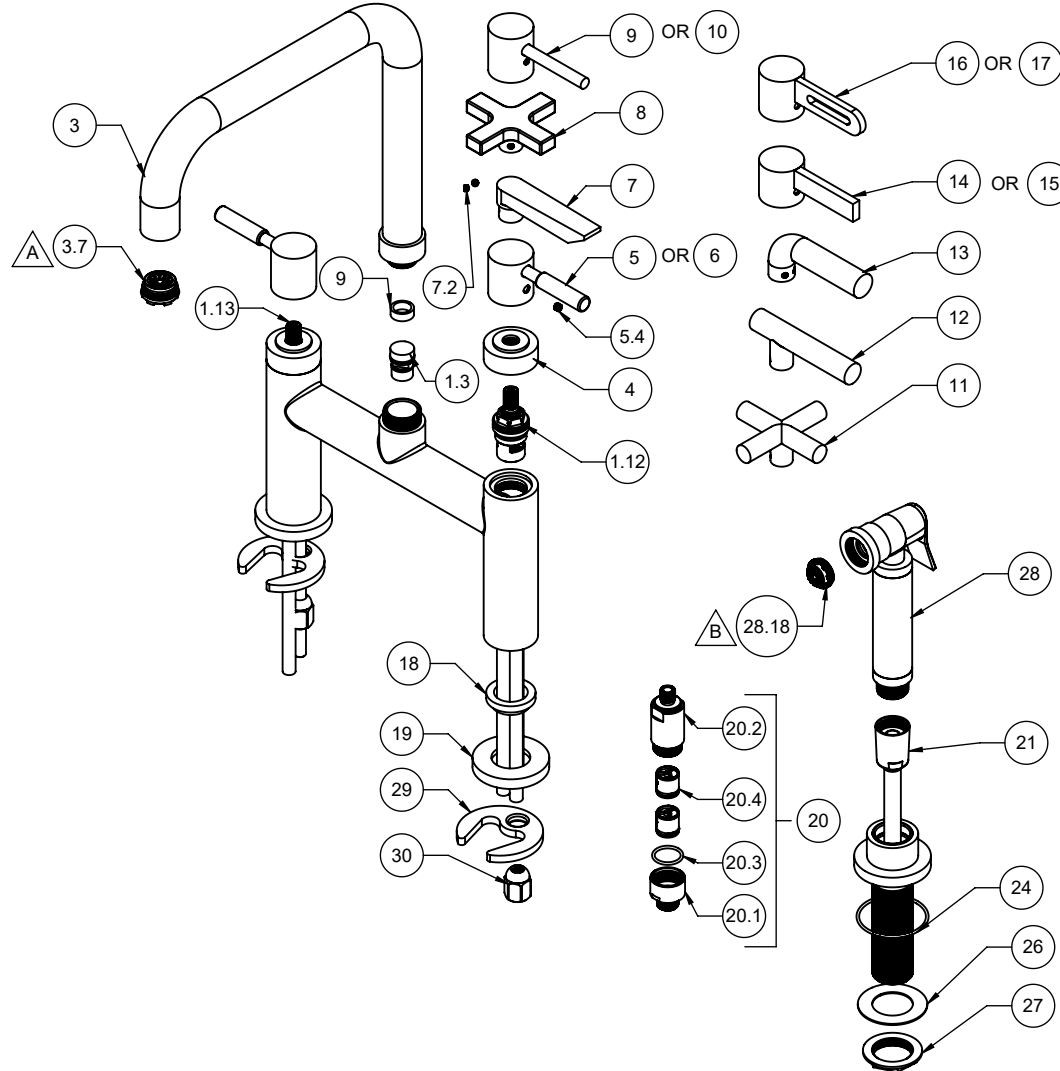


△ REQUIRES ITEM 33

△ REQUIRES ITEM 34

K51-123S-66  
 K51-123S-74  
 K51-123S-E3  
 K51-123S-E3B  
 K51-123S-E3RB  
 K51-123S-E3BRB

K51-123S-45  
 K51-123S-45X  
 K51-123S-52  
 K51-123S-52B  
 K51-123S-62  
 K51-123S-62B  
 K51-123S-65



**K51-123S-66**      **K51-123S-45**  
**K51-123S-74**      **K51-123S-45X**  
**K51-123S-E3**      **K51-123S-52**  
**K51-123S-E3B**      **K51-123S-52B**  
**K51-123S-E3RB**      **K51-123S-62**  
**K51-123S-E3BRB**      **K51-123S-62B**  
                                  **K51-123S-65**

To order spare parts add and/or replace as stated below:

**SPD-** prefix added to part number(s)  
**-ZZ** replaced with finish code (see finish table)  
**-WW** replaced with **-90** (light finish) or **-96** (dark finish)

Ex: **SPD-7-100463-PC** or **SPD-86030-96**

	ITEM	PART NO	DESCRIPTION	QTY.
for E3 series	14	7-100319-ZZ	ASM, HANDLE, RD HUB SHORT & BLADE LEVER <i>(incl. 5.4)</i>	1
for E3B series	15	7-100319B-ZZ	ASM, HANDLE, RD HUB SHORT & BLADE LEVER <i>(incl. 5.4)</i>	1
for E3RB series	16	7-100624-ZZ	ASM, ROUND BLADE HDL SHORT BRCH <i>(incl. 5.4)</i>	1
for E3BRB series	17	7-100624B-ZZ	ASM, ROUND BLADE HDL SHORT BRCH <i>(incl. 5.4)</i>	1
	18	11143-98	SLEEVE, BRIDGE CONT LEG	2
	19	50676-ZZ	RING, CONT AIR SWITCH BASE	3
	20	6-200292	ASM, CHECK VALVE, BRIDGE <i>(incl. 20.1, 20.2, 20.3, 20.4)</i>	1
	20.1	11018-90	HOUSING, TOP CHECK VALVE 3/8 COMP	1
	20.2	10683-90	HOUSING, BOTTOM CHECK VALVE G3	1
	20.3	87224-80	O-RING Ø17.17 X 1.78 (-017) EPDM A70 (NSF61-12 & WRAS)	1
	20.4	880319-81	CHECK VALVE, CV15 FULL FLOW - WHITE	2
	21	880337-99	HOSE, NYLON BRAIDED (DN6) W/ SILICONE, G1/2" X M10 F X 59" "NSF"	1
	24	87093-80	O-RING Ø44.17 X 1.78 (-031) BUNA-N A70	1
	26	962606-98	WSHR, ADAPTER, 9631-&9632, SOAP & LOTION DISP	1
	27	962607-98	NUT, ADAPTER, 9631 & 9632, SOAP & LOTION DISP	1
	28	7-100490-ZZ	ASM, CONT KIT SIDESPRAY <i>(incl. 28.18)</i>	1
	28.18	880559-81	INSERT, 1.0 GPM, JUNIOR SLIM PCA SPRAY SLC	1
	29	880309-98	MOUNTING BRACKET, SINGLE HOLE CRESCENT	2
	30	10184-98	NUT, HEX W/ DOME	2
for ITEM 5.4	31	882043-99	KEY, ALLEN, 3/32", BLACK	1
for ITEM 7.2	32	882042-99	KEY, ALLEN, 5/64", BLACK	1
for ITEM 3.7	33	223473-99	KEY, STD CACHE AERATOR INSERT	1
for ITEM 28.18	34	880255-81	KEY, JR AERATED CACHE	1

	ITEM	PART NO	DESCRIPTION	QTY.
	1.3	880497-81	DIVERTER, BRIDGE TO SIDESPRAY DIVERTER	1
	1.12	880431-99	CART 1/2" 16-T W/FRICTION BRG M24X1 MALE THD - LTC "NL"	1
	1.13	880430-99	CART 1/2" 16-T W/FRICTION BRG M24X1 MALE THD - RTC "NL"	1
	9	11075-98	SPACER, BRIDGE DIVERTER	1
	3	7-100433-ZZ	ASM, SPOUT, CONT BRIDGE TWO BEND <i>(incl. 3.7)</i>	1
	3.7	880529-81	INSERT, 1.75 GPM, STD AERATED (PCA CACHE)	1
	4	10390-ZZ	CAP, CARTRIDGE	2
for 62 series	5	7-100428-ZZ	ASM, LEVER, BRIDGE TWO STEP STICK <i>(incl. 5.4)</i>	2
	5.4	86047-90	SETSCREW 10-24 X 3/16 SCKT HD CONE PT SS	1
for 62B series	6	7-100428B-ZZ	ASM, LEVER, BRIDGE TWO STEP STICK <i>(incl. 5.4)</i>	1
for 45 series	7	7-100135-ZZ	ASM, LEVER HANDLE - ART DECO <i>(incl. 7.2)</i>	1
	7.2	86030-WW	SETSCREW 8-32 X 1/8 SCKT HD CUP PT SS	2
for 45X series	8	7-100267-ZZ	ASM, SQ. CROSS HDL <i>(incl. 7.2)</i>	1
for 52 series	9	5-100175-ZZ	ASM, CONT POTFILLER LEVER ST - K50 <i>(incl. 5.4)</i>	1
for 52B series	10	5-100175B-ZZ	ASM, CONT POTFILLER LEVER ST - K50 <i>(incl. 5.4)</i>	1
for 65 series	11	7-653143-ZZ	KIT, CTEMP CROSS HDL, 65 SERIES <i>(incl. 7.2)</i>	1
for 66 series	12	7-663144-ZZ	KIT, CTEMP LEV HDL, 66 SERIES <i>(incl. 7.2)</i>	1
for 74 series	13	7-100146-ZZ	ASM, LEVER, 74 SERIES "BROACHED" <i>(incl. 7.2)</i>	1