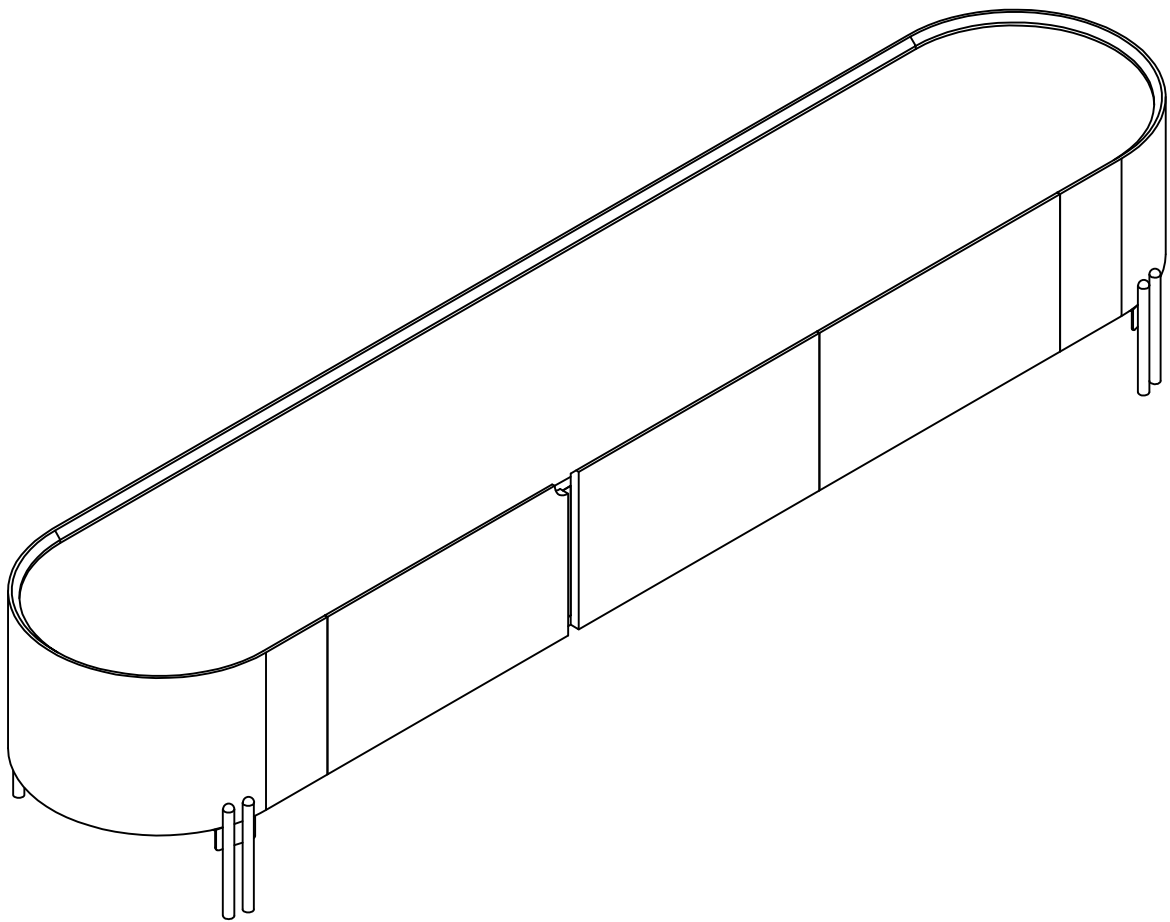


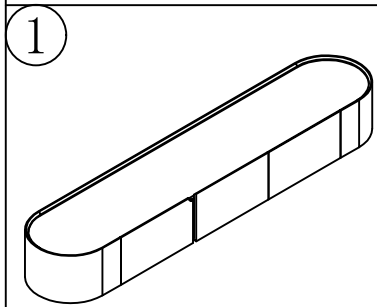
Assembly Guide

TV Stand

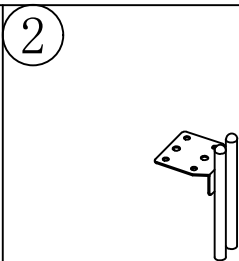


Tips: Do not throw away packing materials until assembly is complete for small parts may come loose inside the carton during shipment. If parts are missing, please contact us. Assemble this item on a soft surface, such as carpet to protect the finish.

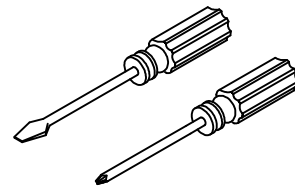
PARTS LIST



Cabinet=1

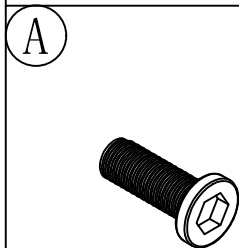


Metal Leg=4

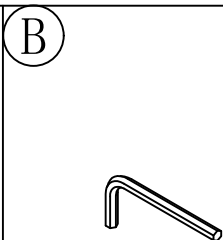


Phillips head screw driver
required
for assemble---not include

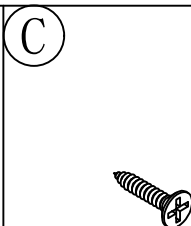
HARDWARE LIST



M6*15 Screw=8



Screwdriver=1

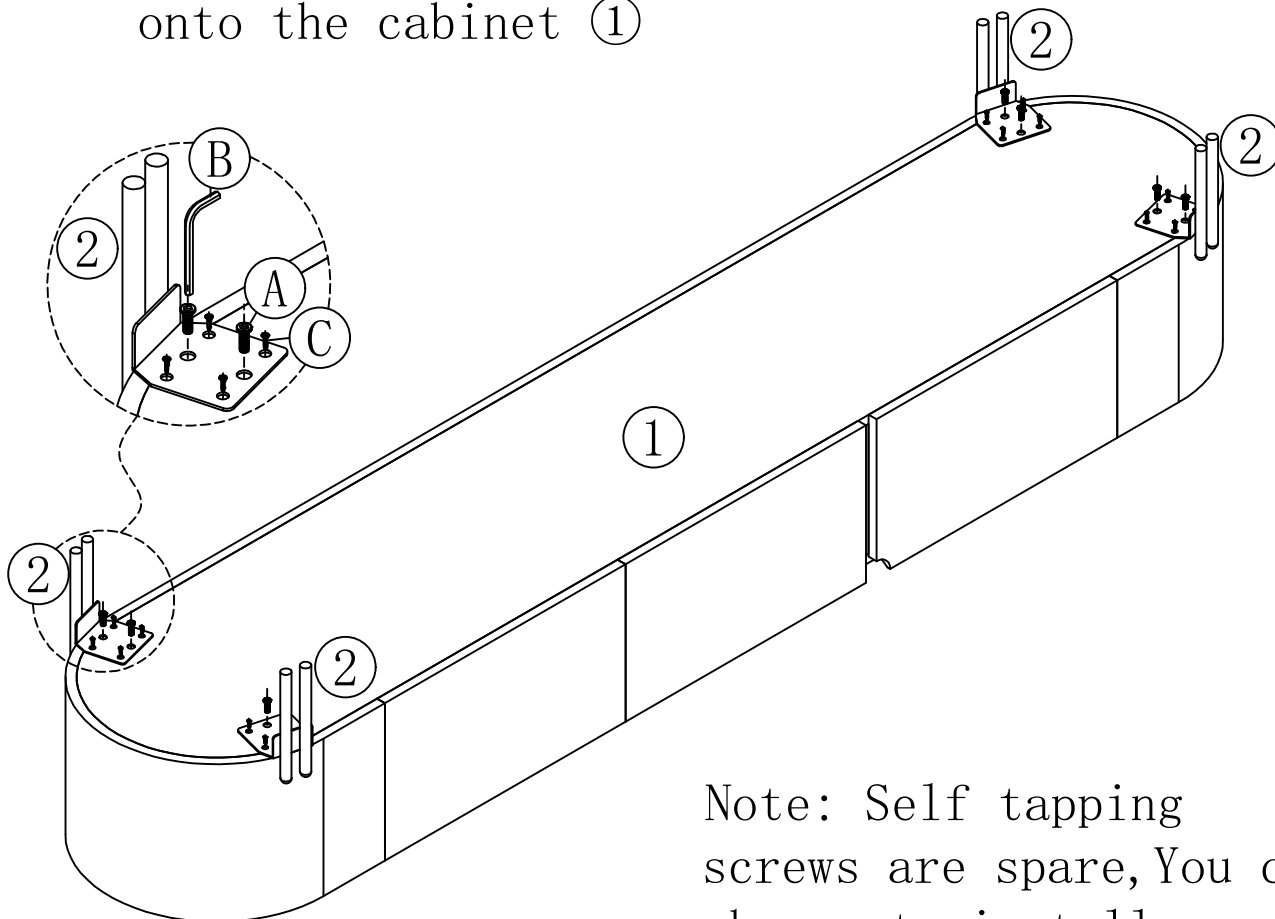


Self-tapping
screw=16

Step 1

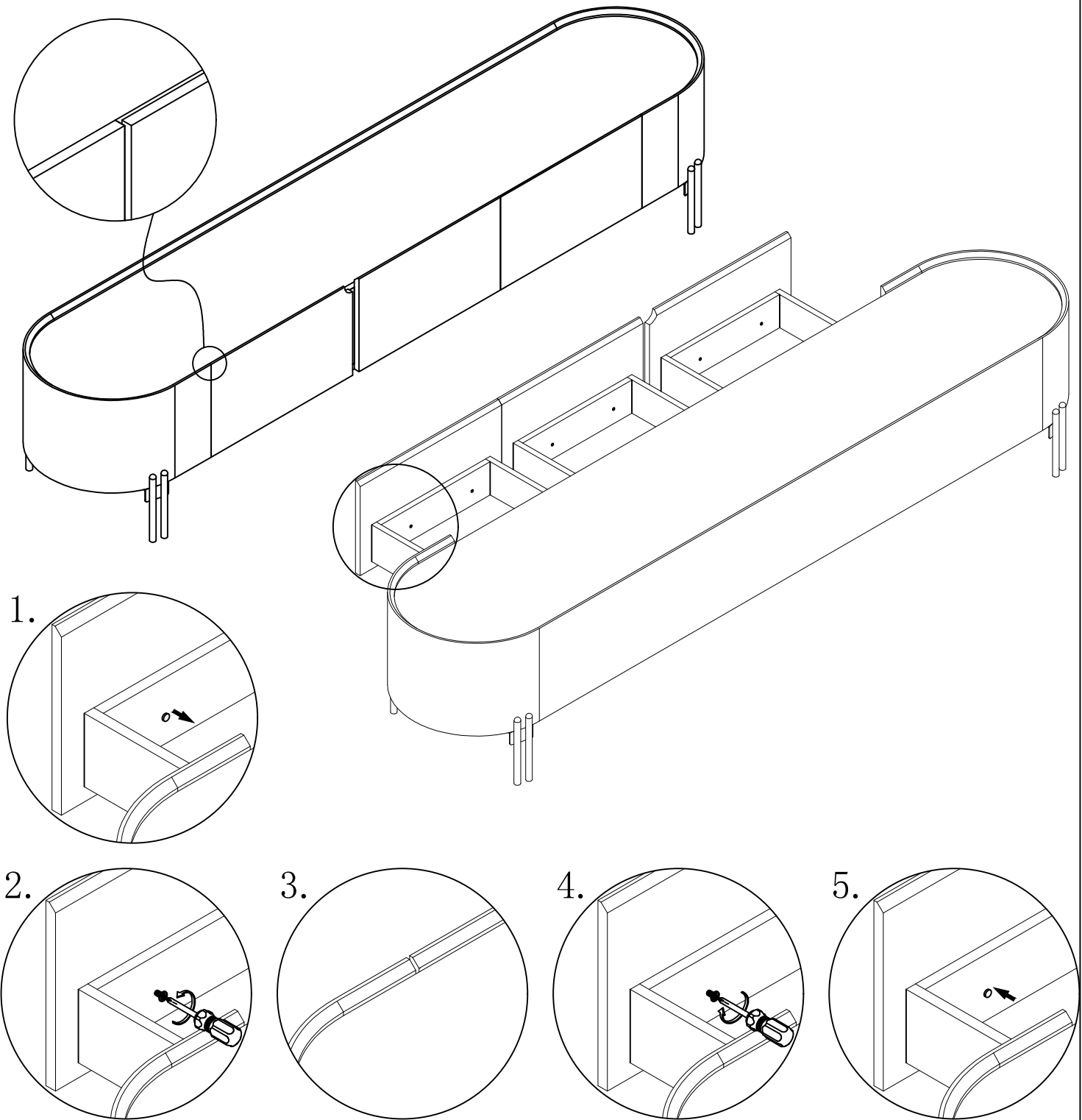
A=8, B=1, C=16

Install the metal legs ②
onto the cabinet ①



Note: Self tapping
screws are spare, You can
choose to install or not.

Step 2



If the drawer panel is crooked, you can adjust it by loosening the screws on the back of the drawer panel:

Step 1: Remove the two caps on top of the screws with force (if it is too tight, you can use a thin knife or screwdriver to assist);

Step 2: Loosen the screws (but do not remove them), close the drawer, and adjust the drawer panel as needed to align it with the cabinet body;

Step 3: After completing the above steps, tighten the screws again and put the screw caps back on.