

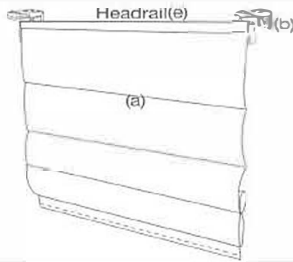
Cordless Roman Shade

Thank you for purchasing cordless roman shade. Please check the package contents and read the installation steps carefully before installing the shade.

Installation Instructions

Content

Name	Shade(a)	Bracket(b)	Bracket Screw(c)	Wall Anchor(d)	Handle Pull(f)
Quantity	(1)	(2)	(4)	(4)	(1)



Step 1 – Checklist

You will need the following tools:

- Drill
- Pencil
- Step Ladder
- Measuring Tape
- Screwdriver

Step 2 – Mounting Brackets

The Roman Shade (a) can be mounted two ways: either inside (Ceiling Mount) or Outside (Wall Mount) of your window frame using the provided Brackets (b). You will need to leave 3-5 inches of space from the ends of the Headrail (e) to properly mount the Brackets. ONLY use the Wall Anchors (d) if you are mounting the brackets onto dry wall.



Mounting Outside the Window Frame (Wall)

Fix the Brackets (b) on the wall outside and above the window frame. Ensure that the Brackets are moved in 3-5 inches from the sides of the window frame. Then place the Bracket Screws (c) through holes on the back plate of the Bracket and tighten until securely fastened to the wall.



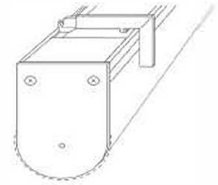
Mounting inside the Window Frame (Ceiling)

Fix the Brackets (b) onto the ceiling (top) inside the window frame, leaving a depth of 3 inches or more from the window. Ensure that the Brackets are moved in 3-5 inches from the sides of the window frame. Then place the Bracket Screws (c) through the top holes and tighten until securely fastened to the top of the window frame.



Step 3 – Securing the Headrail

Place the Headrail (e) onto the Brackets (b) by inserting the back side of the Headrail (d) on first and then pushing the front side upward until it snaps into place. There should be an audible click, when the Headrail is secured.



Once secured, reattach the Roman Shade (a) to the hook and loop fastener on the front of the Headrail (e).

Step 4 – Operation of Your shade

HANDLE PULL INSTALLATION:

Slide the handle pull (f) over the Slat Bar located at the bottom edge of your shade liner as shown below.

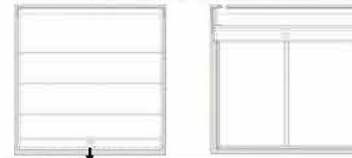


OPERATING INSTRUCTIONS:

To Lower the Shade: Pull the bottom edge of the back liner to lower the shade until the desired height. Pull the bottom edge of the back liner again to hold the shade in place.



To Raise the Shade: Pull the bottom edge of the back liner twice to release the shade. Lift to the desired height then pull back liner again to hold the shade in place.

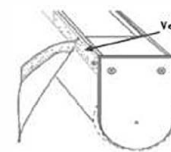


Step 5 – Maintaining Your Shade

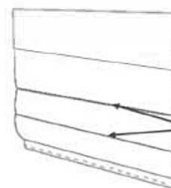
Dust your shades with a soft clean cloth or a feather duster. Lower the shade to its fullest length for a complete cleaning. You can also remove the shade from the bar, with the hook and loop fastener and tightly shake for a simple cleaning.

Disassembling and washing

The front fabric can be removed for wash.



1 Gently remove it from the headrail and bottom by tearing off from the Velcro part.



2 Remove the two support rods and the bottom bar.