

PRODUCT: CK BED FRAME

GENERAL

APPLICATION: CALIFORNIA KING

FINISH: BLACK

MOBILITIES (LEG ATTACHMENTS): 2 1/2" GLIDES WITH METAL SLEEVES

PACKAGED WEIGHT: 40 LBS.

CONSTRUCTION

SIDE RAIL: 1 1/2" X 1 1/2" X .100"

CROSS ARMS: 1 1/4" X 1 1/4" X .100"

TYPE: LATCH

CROSS WIRE/SUPPORT: N/A

CENTER SUPPORT: 1 3/4" X 1 3/8" X 12 GA.

RETAINER BRACKETS: N/A

HEADBOARD/FOOTBOARD BRACKETS: FIXED, REVERSED BRACKET

REMARKS: FITS KING HEADBOARD/FOOTBOARD WITH

CALIFORNIA KING BEDDING.

| | | | |
|-----------------------|--------|------|-------|
| DESCRIPTION OF CHANGE | SDS | RAB | 10819 |
| | AUTHOR | CHKD | EDR# |

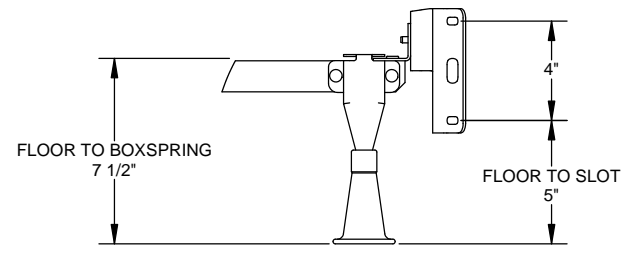
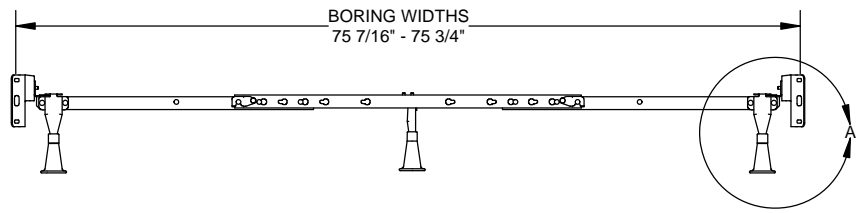
RELEASED.

| | | |
|---|-------------|----------|
| ALL FASTENERS PER ANSI B18 AND SAE J429 STANDARDS | | |
| ALL WELDS PER ANSI/AWS A2.4-79 AMERICAN NATIONAL STANDARD | | |
| DIMENSIONS ARE INCHES UNLESS OTHERWISE NOTED | | |
| TOLERANCE UNLESS OTHERWISE NOTED | | |
| DECIMAL: | FRACTIONAL: | ANGULAR: |
| .XXX = ±.015 .XX = ±.03 .X = ±.06 | ± 1/32 | ± 1° |
| PROPRIETARY AND CONFIDENTIAL | | |
| THE INFORMATION CONTAINED IN THIS DRAWING IS THE SOLE PROPERTY OF LEGGETT & PLATT, INC. ANY REPRODUCTION IN PART OR AS A WHOLE WITHOUT THE WRITTEN PERMISSION OF LEGGETT & PLATT, INC. IS PROHIBITED. | | |

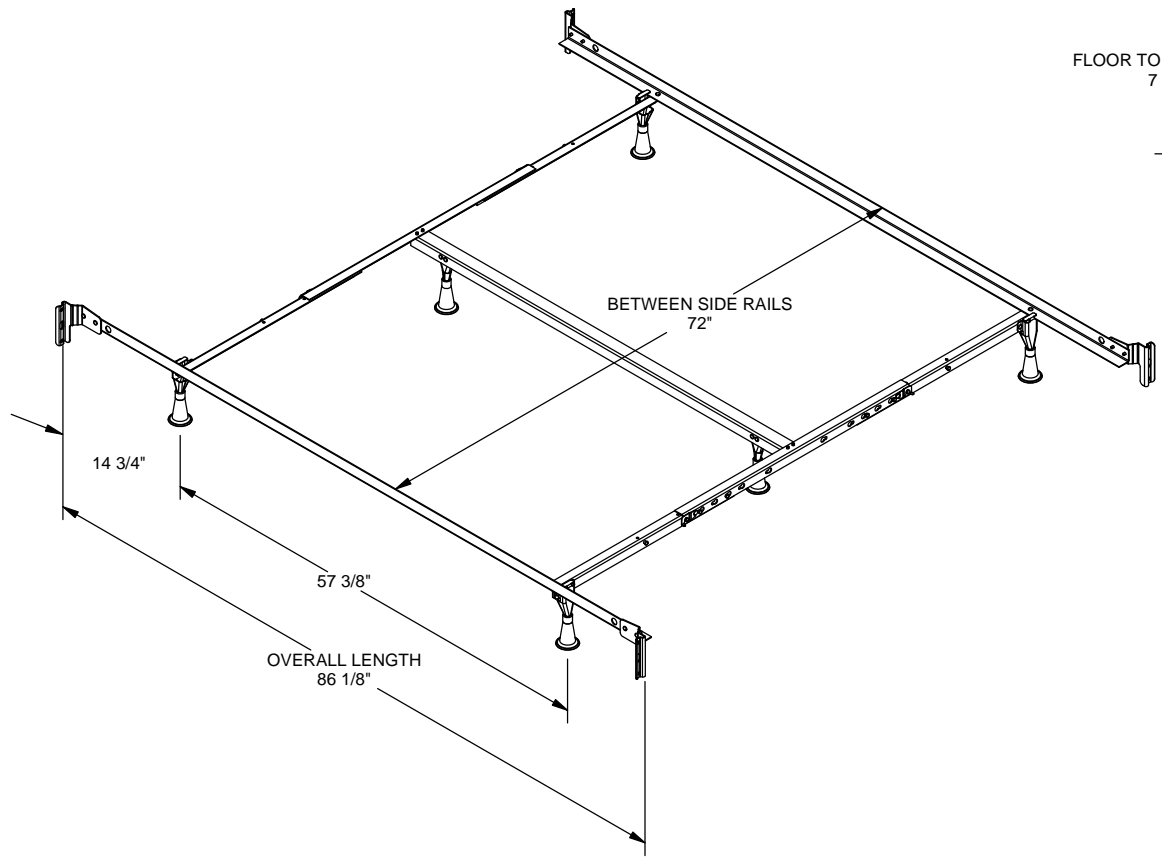
| | |
|-------------|------|
| APPROVALS | NAME |
| DRAWN | SDS |
| ENGINEERING | RAB |
| TOOLING | N/A |
| MFG APPR. | RW |
| Q.A. | RV |

THIS PRINT SUPERSEDES ALL PREVIOUS PRINTS
DESTROY ALL PRINTS ISSUED PRIOR TO THIS REVISION

SIZE **A**



DETAIL A
SCALE 1 : 5



ALL FASTENERS PER
ANSI B18 AND SAE J429 STANDARDS

ALL WELDS PER ANSIAIWS A2.4-79
AMERICAN NATIONAL STANDARDS

DIMENSIONS ARE INCHES
UNLESS OTHERWISE NOTED.

TOLERANCE UNLESS OTHERWISE NOTED:

| | | |
|--------------|-------------|----------|
| DECIMAL: | FRACTIONAL: | ANGULAR: |
| .XXX = ±.015 | ± 1/32 | ± 1° |
| .XX = ±.03 | | |
| .X = ±.06 | | |

PROPRIETARY AND CONFIDENTIAL

THE INFORMATION CONTAINED IN THIS
DRAWING IS THE SOLE PROPERTY OF
LEGGETT & PLATT, INC. ANY
REPRODUCTION IN PART OR AS A WHOLE
WITHOUT THE WRITTEN PERMISSION OF
LEGGETT & PLATT, INC. IS
PROHIBITED.

| | | | |
|---|---------------|-------------|---------------|
| DESCRIPTION OF CHANGE | SDS AUTHOR | RAB CHKD | 10819 EDR# |
| RELEASED. | | | |
| APPROVALS | NAME | | |
| DRAWN | SDS | | |
| ENGINEERING | RAB | | |
| TOOLING | N/A | | |
| MFG APPR. | RW | | |
| Q.A. | RV | | |
| THIS PRINT SUPERSEDES ALL PREVIOUS PRINTS | | | |
| DESTROY ALL PRINTS ISSUED PRIOR TO THIS REVISION | | | |
| SIZE B | | | |
| SCALE: 1:16 DO NOT SCALE DRAWING SHEET 3 OF 3 | | | |