

# TREMONT TRIM

## MORTISE HANDLESET ENTRANCE TRIM



### SPECIFICATIONS

|                        |              |
|------------------------|--------------|
| LOCK TYPE              | Mortise      |
| STYLE                  | Transitional |
| LOCK FUNCTION          | Entry        |
| MAXIMUM DOOR THICKNESS | 2.25         |
| MINIMUM DOOR THICKNESS | 1.5          |

# TREMONT TRIM

## MORTISE HANDLESET ENTRANCE TRIM



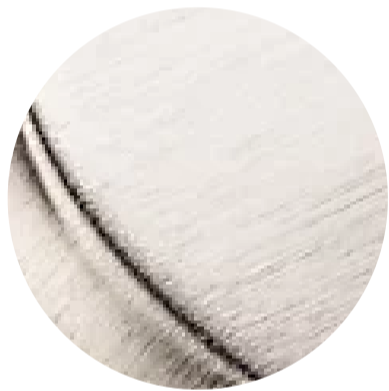
### ESTATE PORTFOLIO

Model Number:  
6542.003.ENTR

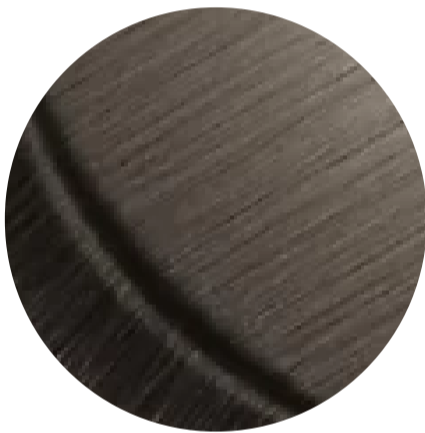
### Key Features

- ✓ The Tremont Entrance Trim is a superb example of high-quality aesthetics and craftsmanship that will elevate any doors functionality and visual appeal.
  - ✓ Shown in Standard Entry Function, but also available in Double Cylinder, Full Dummy, Exterior Only and Back to Back, as well as individual escutcheons Cut for Cylinder, Cut for Emergency Release, Cut for Knob, Cut for Turn Knob and Cut for Privacy.
  - ✓ Customize by substituting any interior knob or lever of your choice or by utilizing the interior escutcheon plate to create passage, privacy, dummy or entry sets. Thin and thick door kits available to accommodate a wide range of door conditions and applications.
- The mortise application is a unique door condition that requires custom door preparation, specification and installation. The full mortise
- ✓ specification requires multiple components, including this decorative trim. To learn more about specifying mortise, please refer to the "Know Before You Go" section on this page.

### FINISHES OPTIONS



Lifetime (PVD) Satin Nickel - 056



Lifetime (PVD) Graphite Nickel - 076



Lifetime (PVD) Polished Nickel - 055



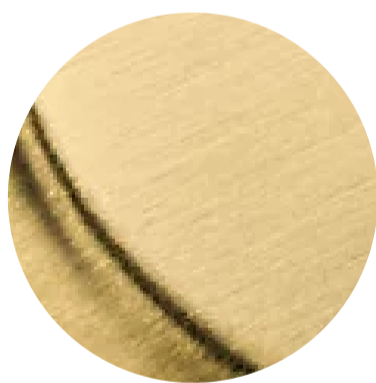
Polished Chrome - 260



Distressed Oil Rubbed Bronze - 402



Lifetime (PVD) Polished Brass - 003



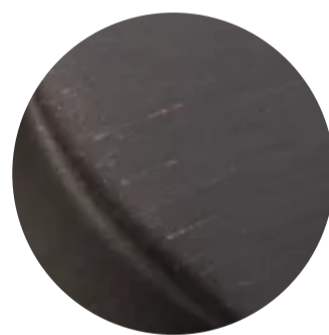
Lifetime (PVD) Satin Brass - 044



Satin Black - 190



Oil Rubbed Bronze - 102



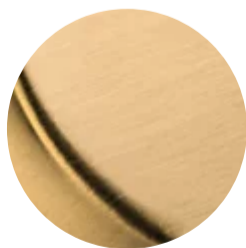
Venetian Bronze - 112, 11P



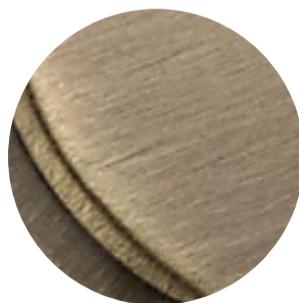
Satin Brass & Brown - 060



Non-lacquered Brass - 031



Vintage Brass - 033



Satin Brass & Black - 050

### SPECIFICATIONS

|   |                     |
|---|---------------------|
| LOCK TYPE   | Non-lacquered Brass |
| STYLE   | Transitional        |
| LOCK FUNCTION   | Entry               |
| MAXIMUM DOOR THICKNESS<br><i>all measurements in inches</i> | 2.25                |
| MINIMUM DOOR THICKNESS                                      | 1.5                 |

# TREMONT TRIM

## MORTISE HANDLESET ENTRANCE TRIM



|          |                            |  |        |
|----------|----------------------------|--|--------|
| Set      | 6542.xxx.DBLC              | Double Cylinder  | Set    |
| Set      | 6542.xxx.FD                | Full Dummy   | Set    |
| Set      | 6542.xxx.ENFD <sup>†</sup> | 1 Active Entrance Set + 1 Full Dummy Set                     | 2 Sets |
| Ext      | 6605.xxx.BB75              | Entrance Back-to-Back  | Set    |
| Ext      | 6605.xxx.BB30              | Entrance Back-to-Back  | Set    |
| Ext      | 6605.xxx.BBFD              | Dummy Back-to-Back   | Set    |
| Ext      | 6605.xxx                   | Active Exterior Trim   | Each   |
| Ext      | 6605.xxx.DM                | Dummy Exterior Trim  | Each   |
| Interior | 6796.xxx.KC                | Interior Escutcheon – Cut for Cylinder (KC), Double Cylinder | Each   |
| Interior | 6796.xxx.KE**              | Cut for Emergency Release (KE**)                             | Each   |
| Interior | 6796.xxx.KN                | Cut for Knob (KN), Passage/Dummy                             | Each   |
| Interior | 6796.xxx.KT                | Interior Escutcheon w/ Turn Knob (KT)                        | Each   |
| Interior | 6796.xxx.KP <sup>1</sup>   | Escutcheons Cut for Privacy (KP)                             | Pair   |

- <sup>†</sup>ENFD only available in 050 & 112, to ensure a finish match on all components.

## SPECIFICATIONS

|                        |              |
|------------------------|--------------|
| LOCK TYPE              | Mortise      |
| STYLE                  | Transitional |
| LOCK FUNCTION          | Entry        |
| MAXIMUM DOOR THICKNESS | 2.25         |
| MINIMUM DOOR THICKNESS | 1.5          |