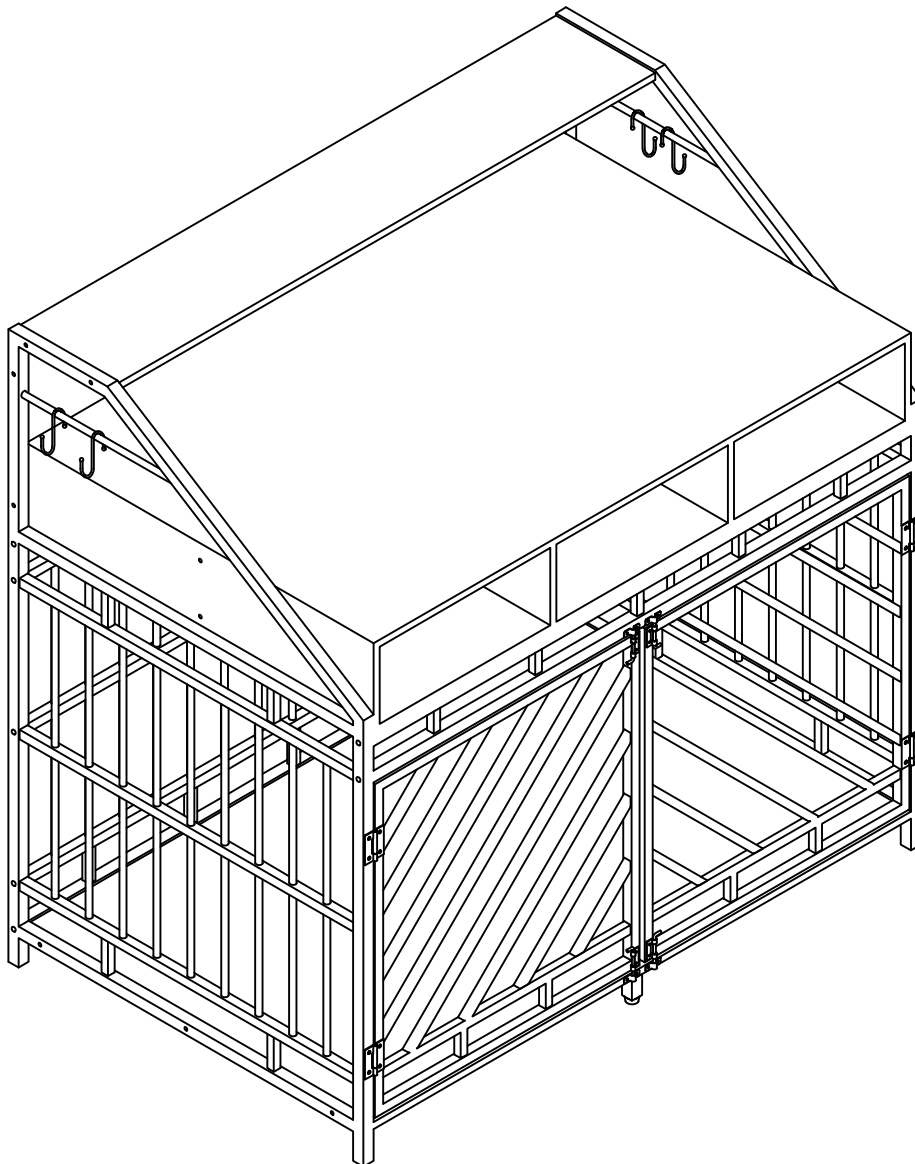
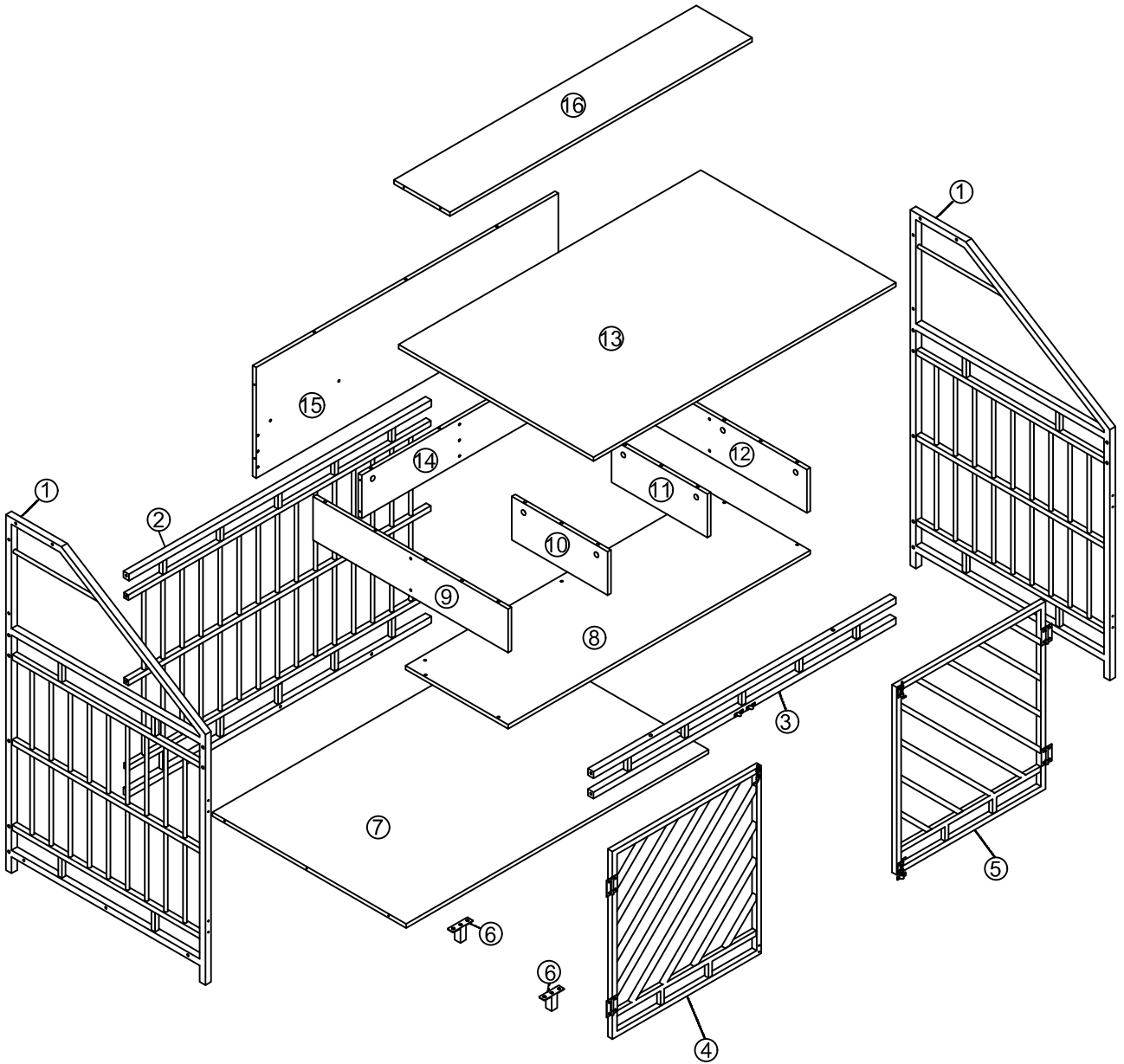
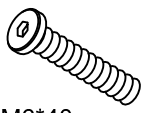



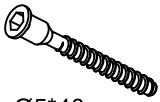
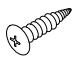
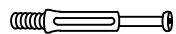
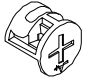








ASSEMBLY INSTRUCTION

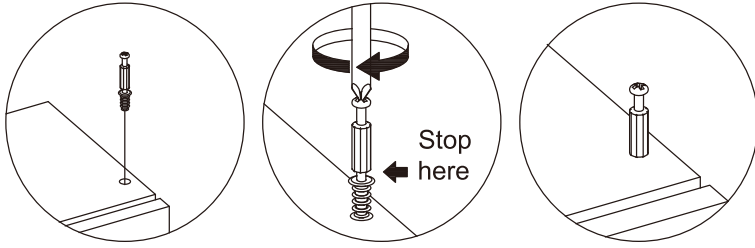




A  M6*40mm	B  M6*28mm	C  M6*12mm	D  M4*14mm	E  Ø5*40mm
X 14PCS	X 2PCS	X 4PCS	X 8PCS	X 43PCS
F  3.5*12mm	G  6*35mm	H  X 13PCS	I  Ø6*30mm	J  Ø22*M6*15mm
X 4PCS	X 13PCS	X 13PCS	X 23PCS	X 2PCS
K  X 2PCS	M  X 4PCS	N  M4 X 1PC	O  M3 X 1PC	
X 2PCS	X 4PCS	X 1PC	X 1PC	

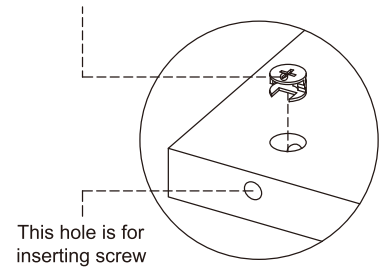
1. Screw installation method

When the screw is installed, please keep it in line with the board, and do not tighten it too tightly

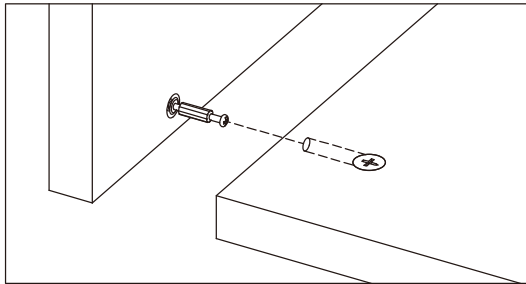


2. Compruebe la dirección de la tuerca

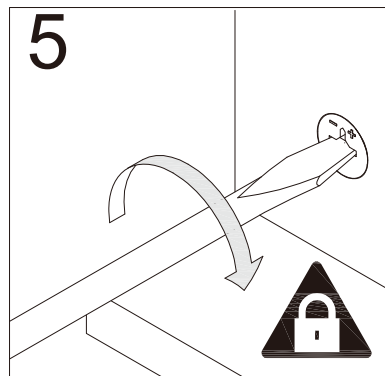
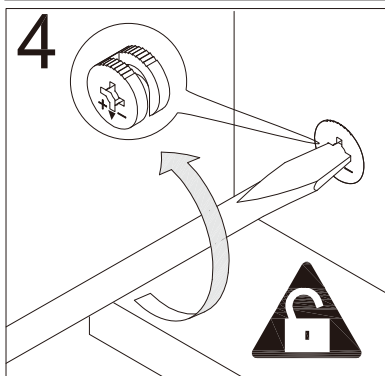
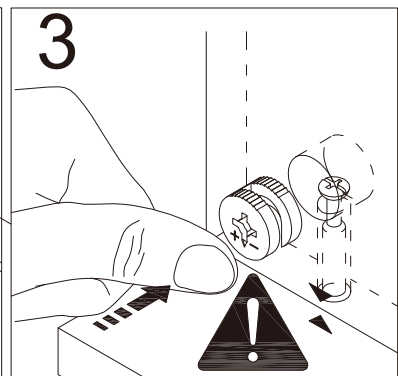
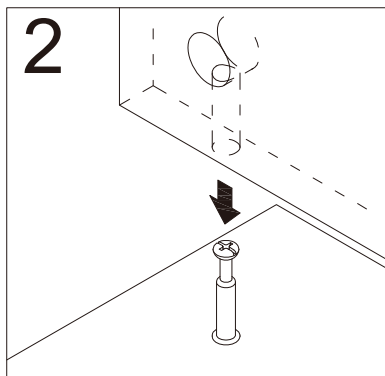
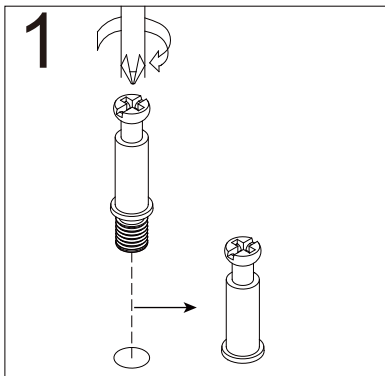
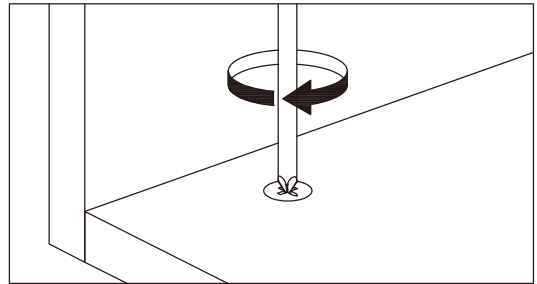
This direction of the marked nut is consistent with the direction in which the screw is inserted



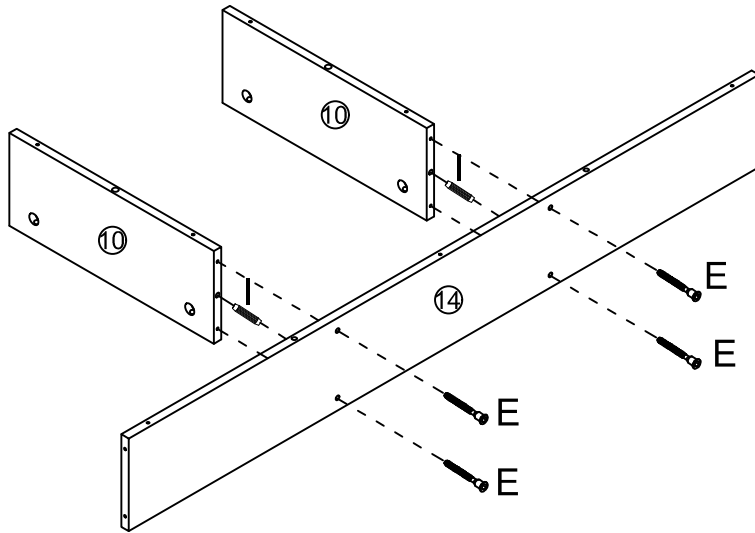
3. Installation on the board with fixing screws



3. Rotate slowly until it stops



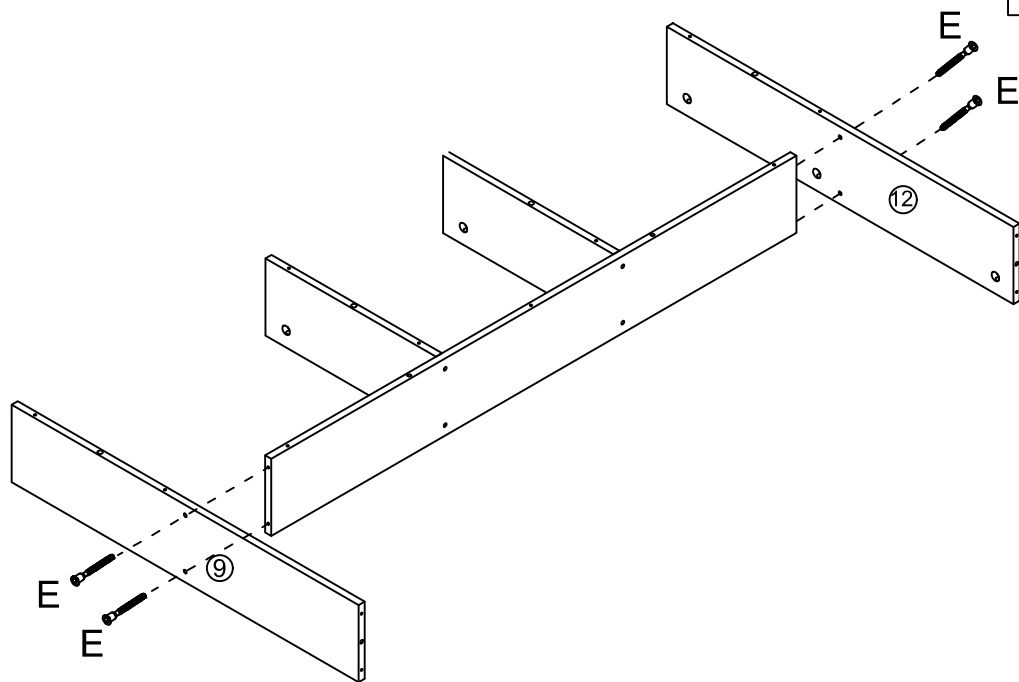
STEP 1



E
Ø5*40mm
X 4PCS

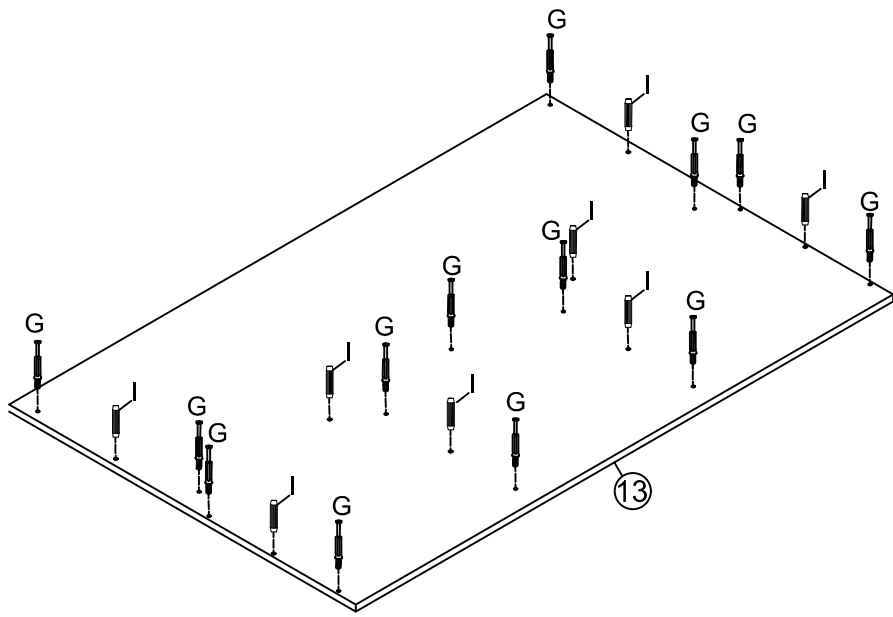
I
Ø6*30mm
X 2PCS

STEP 2

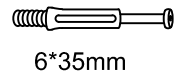


E
Ø5*40mm
X 4PCS

STEP 3



G



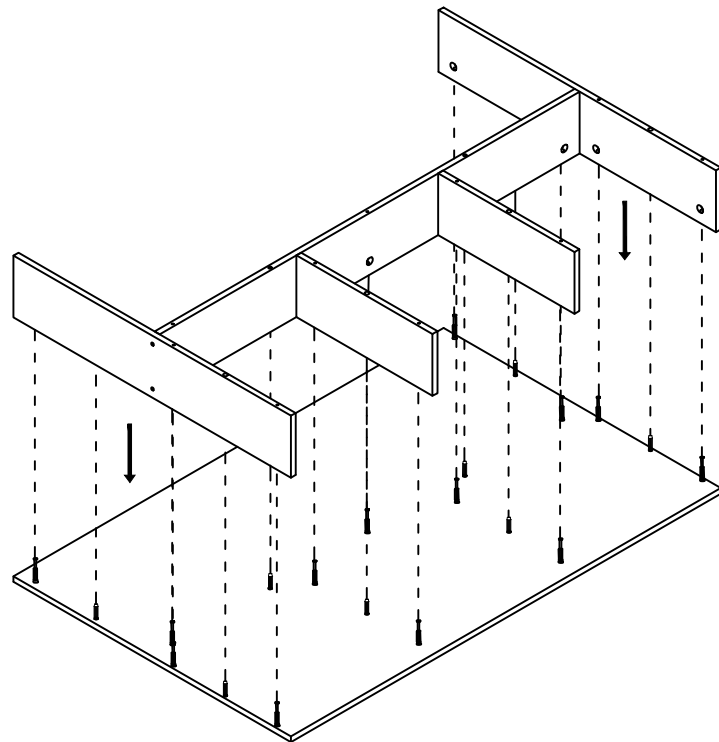
X 13PCS

I

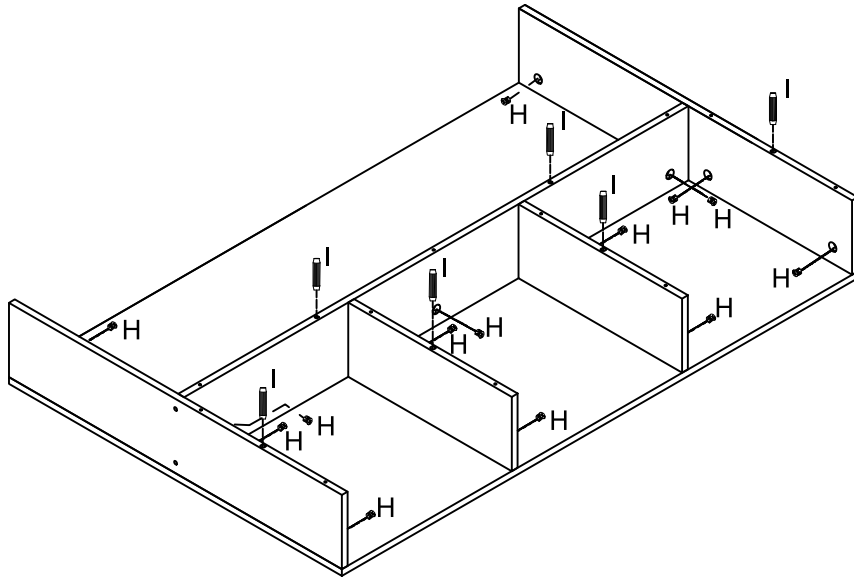


X 8PCS

STEP 4



STEP 5



H



X 13PCS

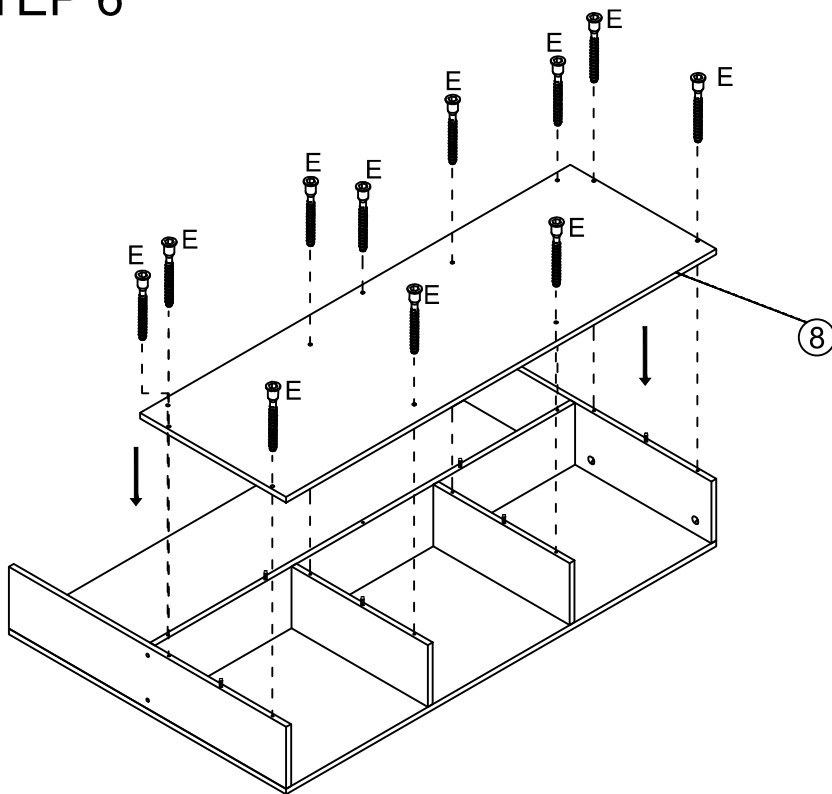
I



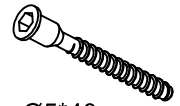
Ø6*30mm

X 6PCS

STEP 6



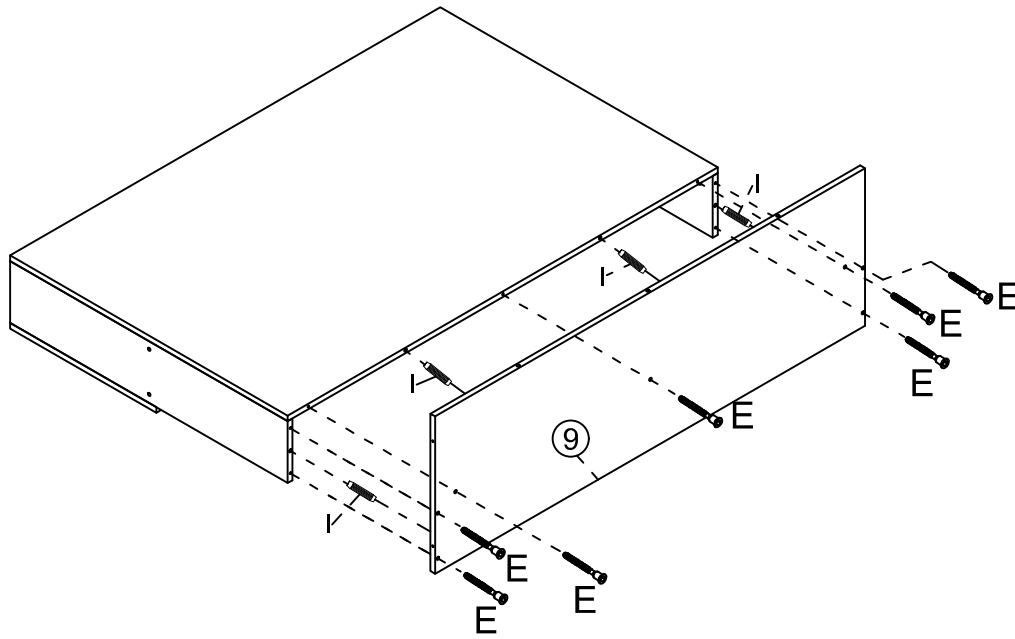
E

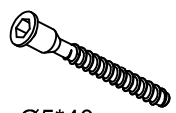



Ø5*40mm

X 11PCS

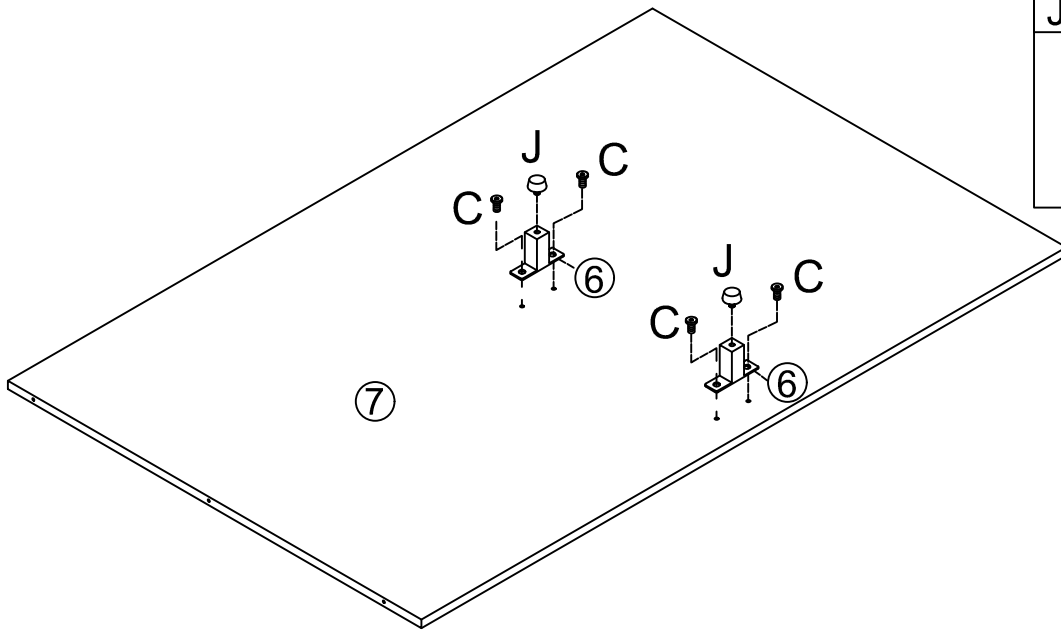
STEP 7





E

Ø5*40mm
X 7PCS

I

Ø6*30mm
X 4PCS

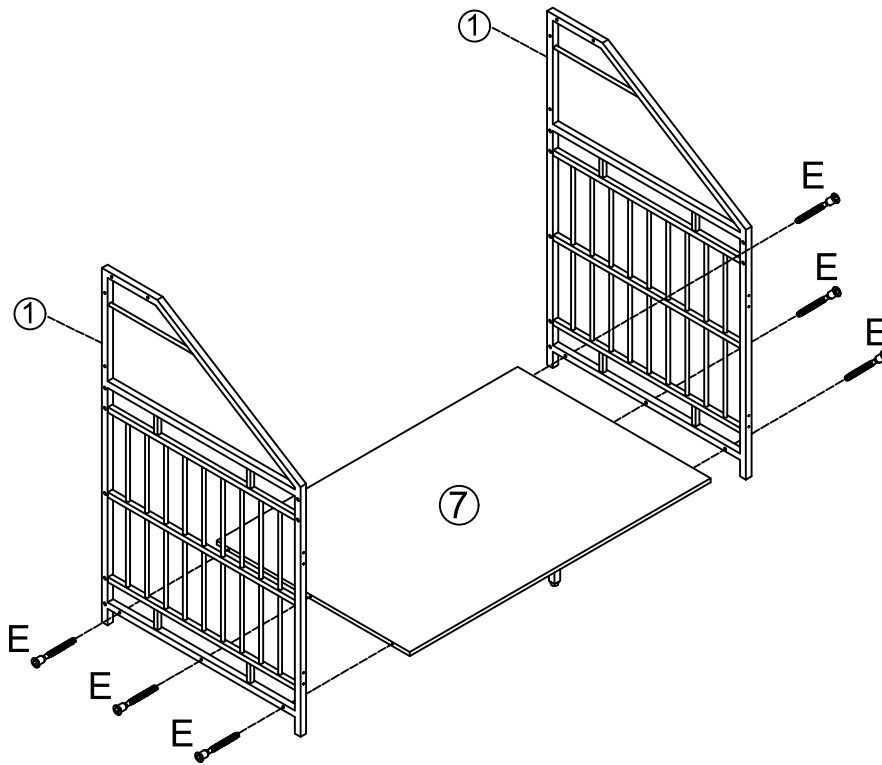
STEP 8



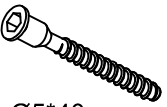
C

M6*12mm
X 4PCS

J

X 2PCS

STEP 9

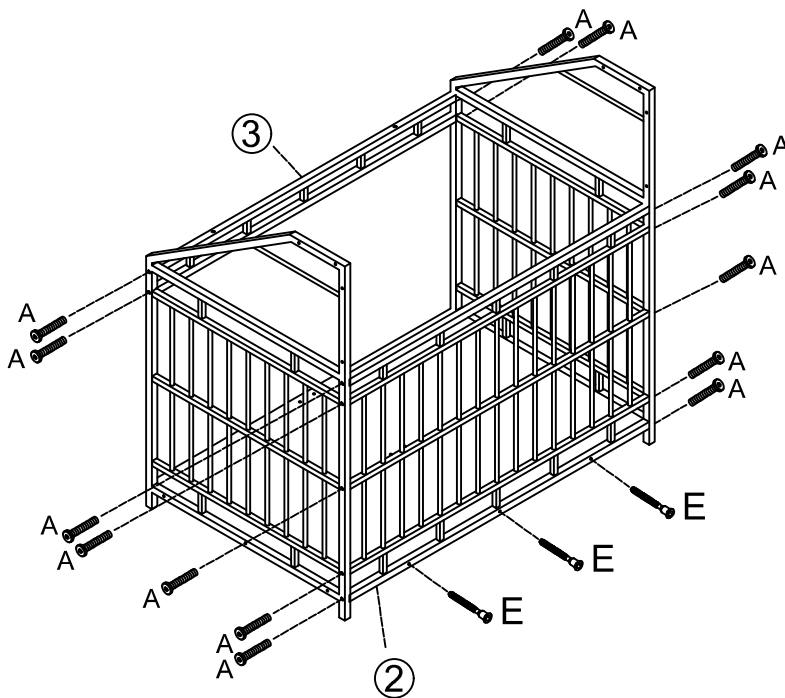


E




Ø5*40mm
X 6PCS

STEP 10

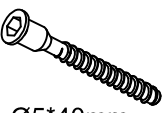


A



M6*40mm
X 14PCS

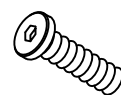
E



Ø5*40mm
X 3PCS

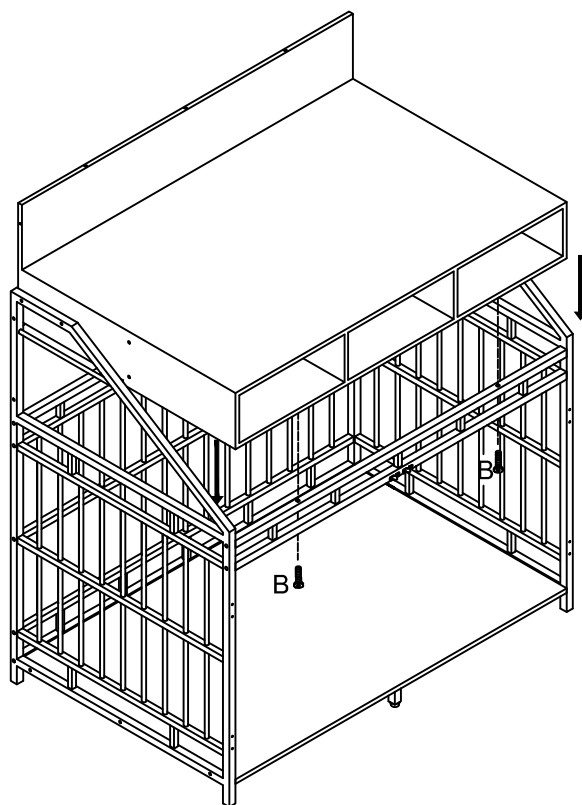
STEP 11

B



M6*28mm

X 2PCS



STEP 12

E



Ø5*40mm

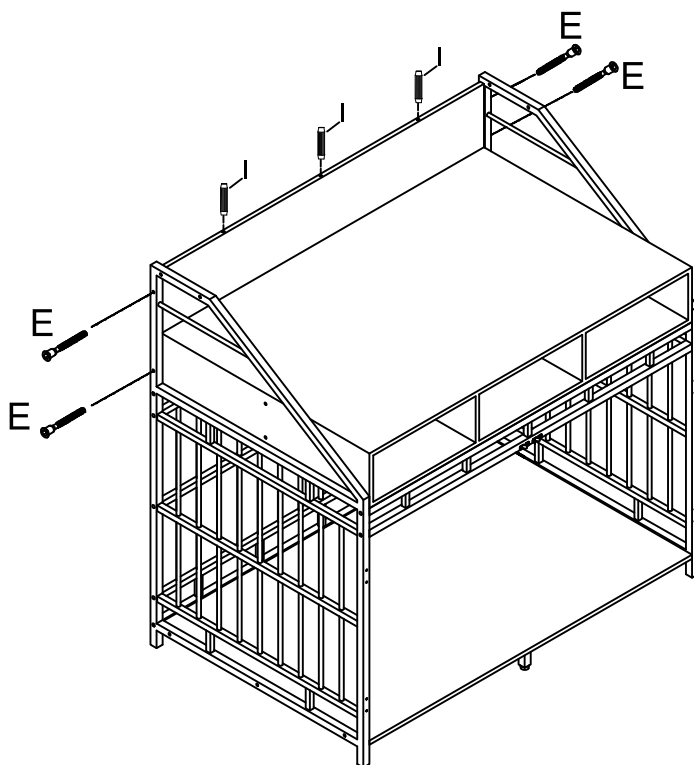
X4PCS

I

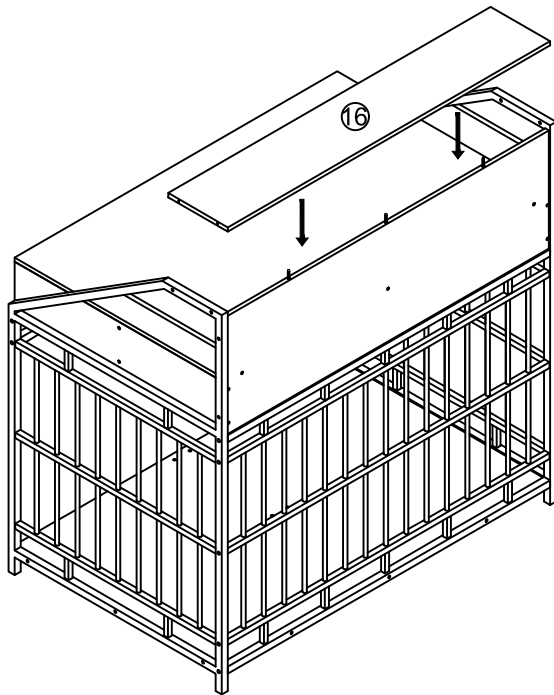


Ø6*30mm

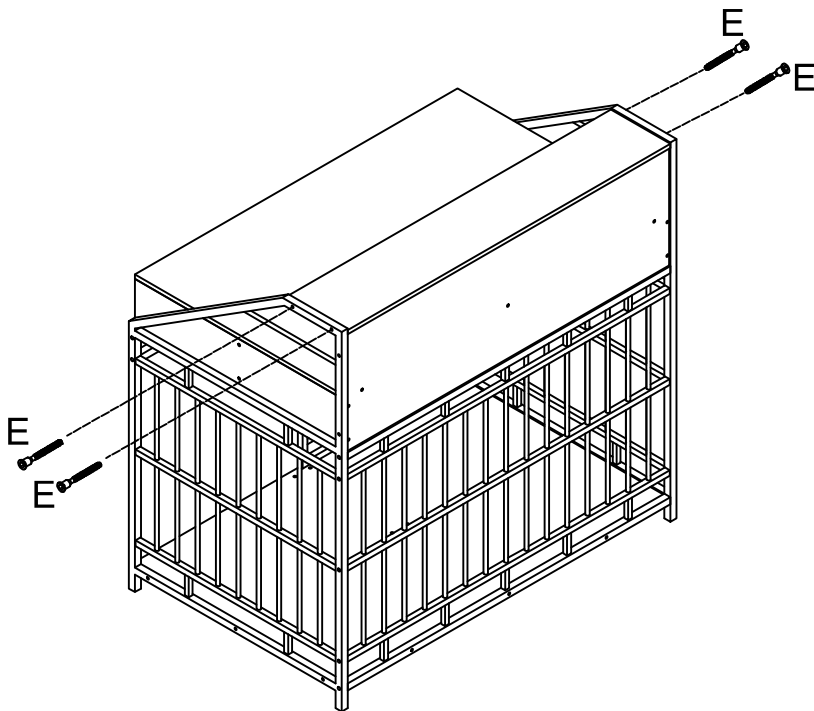
X 3PCS



STEP 13



STEP 14



E



Ø5*40mm

X 4PCS

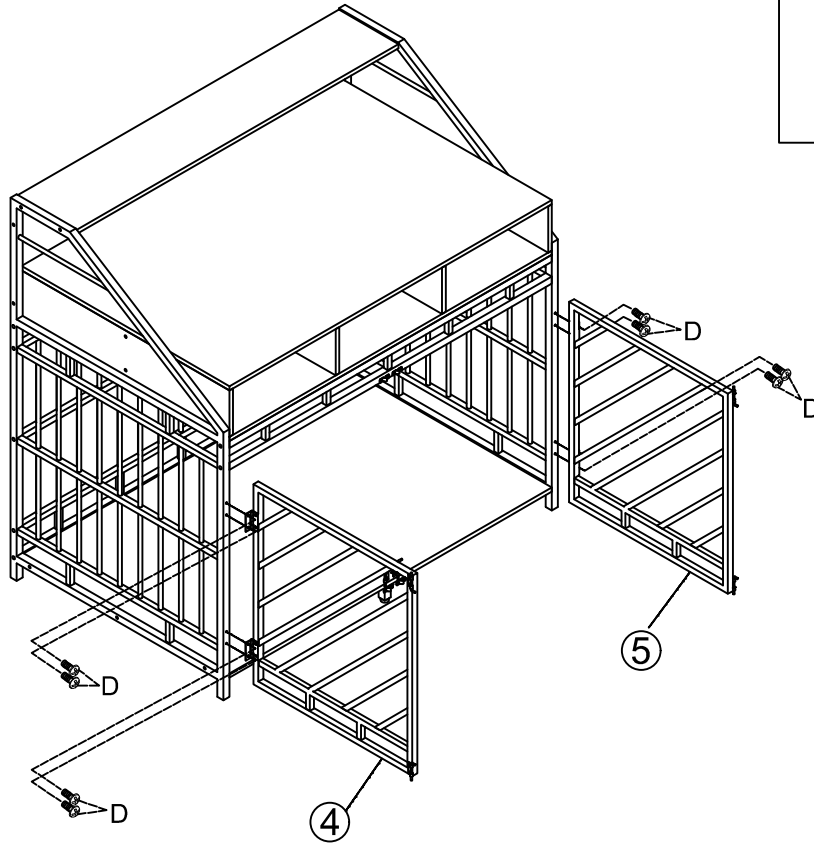
STEP 15

D

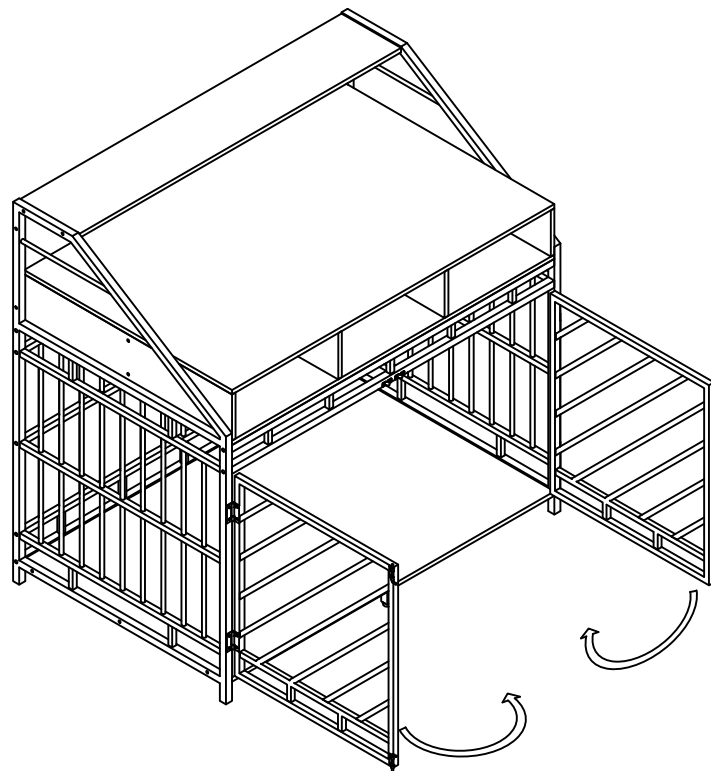


M4*14mm

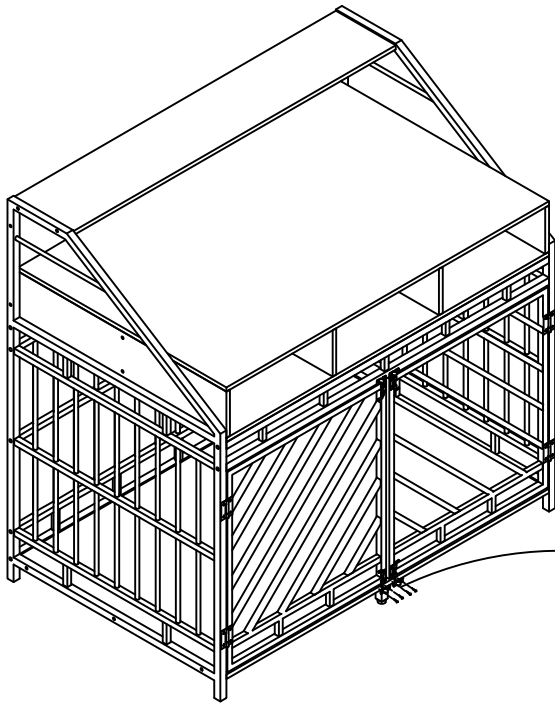
X 8PCS



STEP 16



STEP 17



F



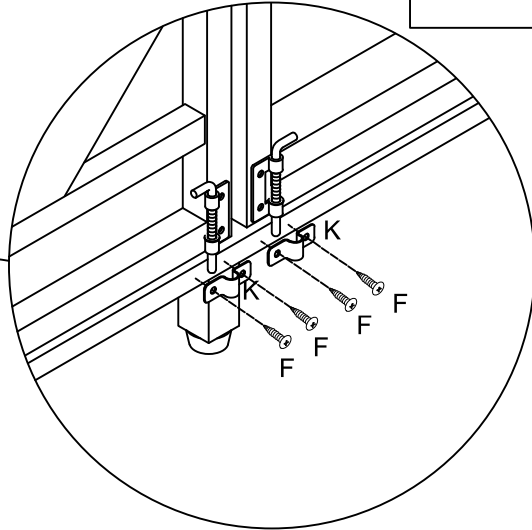
3.5*12mm

X 4PCS

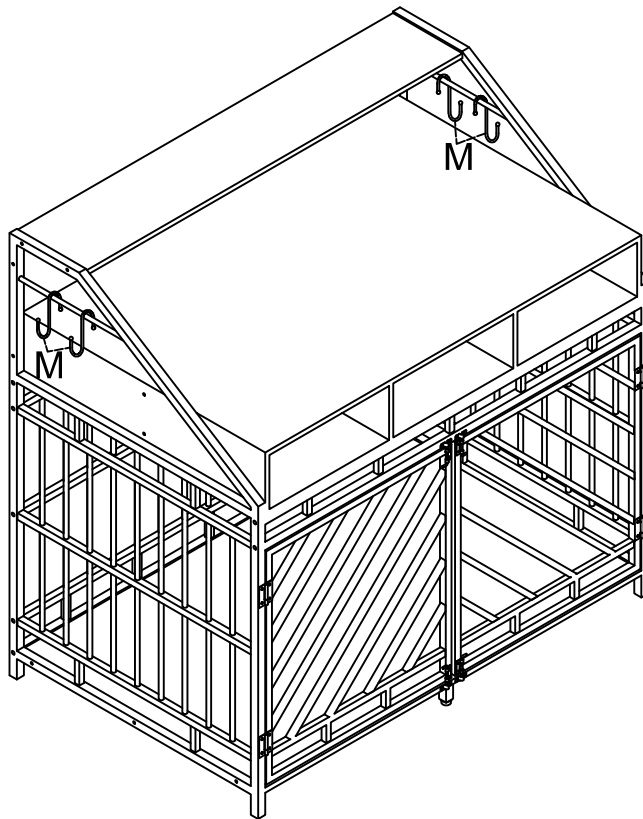
K



X 2PCS



STEP 18



M



X 4PCS