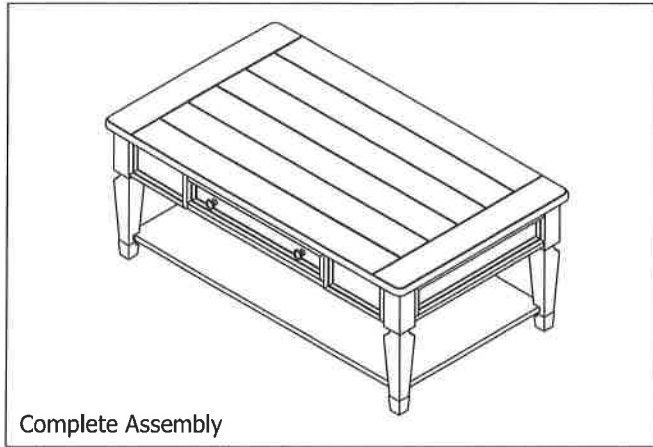


ASSEMBLY INSTRUCTION

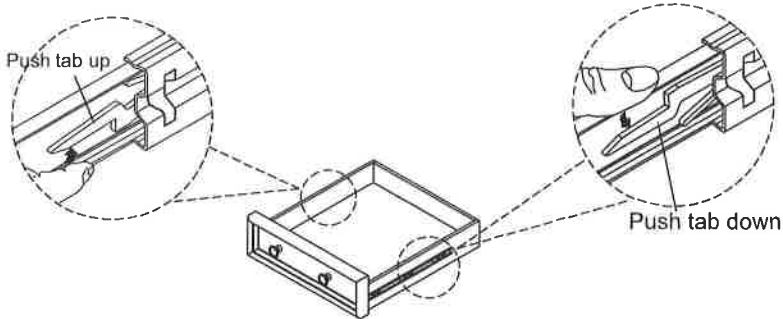
DESCRIPTION: Cocktail Table

Thank you for purchasing this quality product. Be sure to check all packing materials carefully for small parts which may have come loose inside the carton during shipment. Identify and count all parts and compare with the parts List Below.



HOW TO REMOVE DRAWER

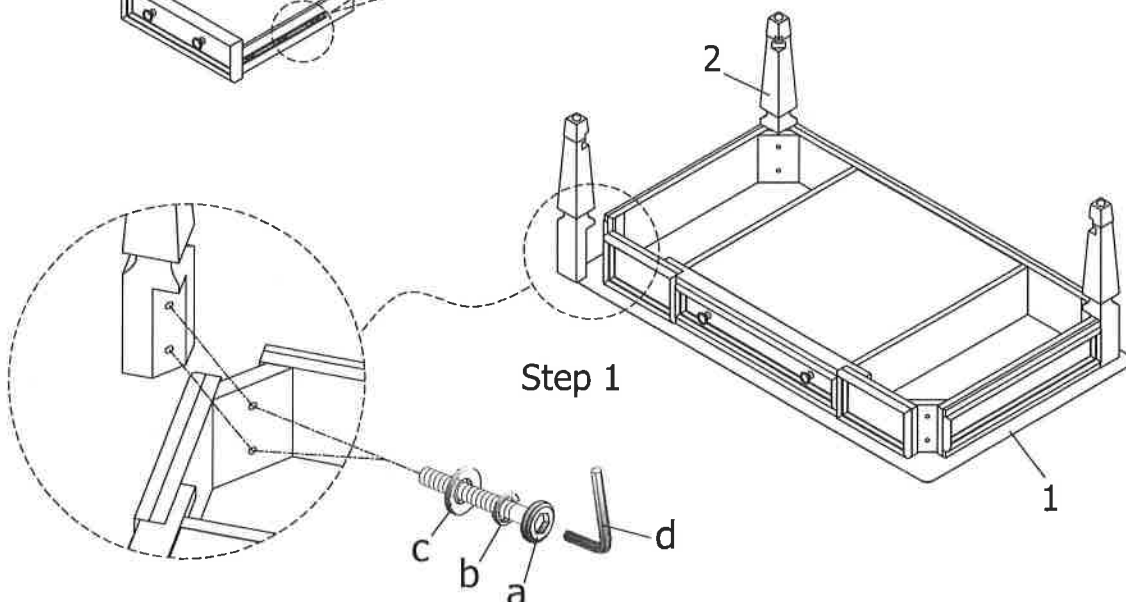
To remove drawer, simultaneously pull tab up on one side and push down on the other and remove drawer



PARTS LIST

NO.	SKETCH	DESCRIPTION	Q'TY
1		Top	1pc
2		Leg	4pcs
3		Bottom shelf	1pc
4	HARDWARE LIST		1bag
NO.	SKETCH	HARDWARE	Q'TY
a		5/16"x18x2-1/4"	8pcs
b		5/16"	8pcs
c		5/16"x16mm	8pcs
d		4mm	1pc
e		1/4"x20x5/8"	4pcs
f			4pcs
g		#3x5/8"	8pcs

DO NOT FULLY TIGHTEN SCREW, BOLTS UNTIL ALL PARTS COMPLETE ASSEMBLY



CLEANING INSTRUCTION

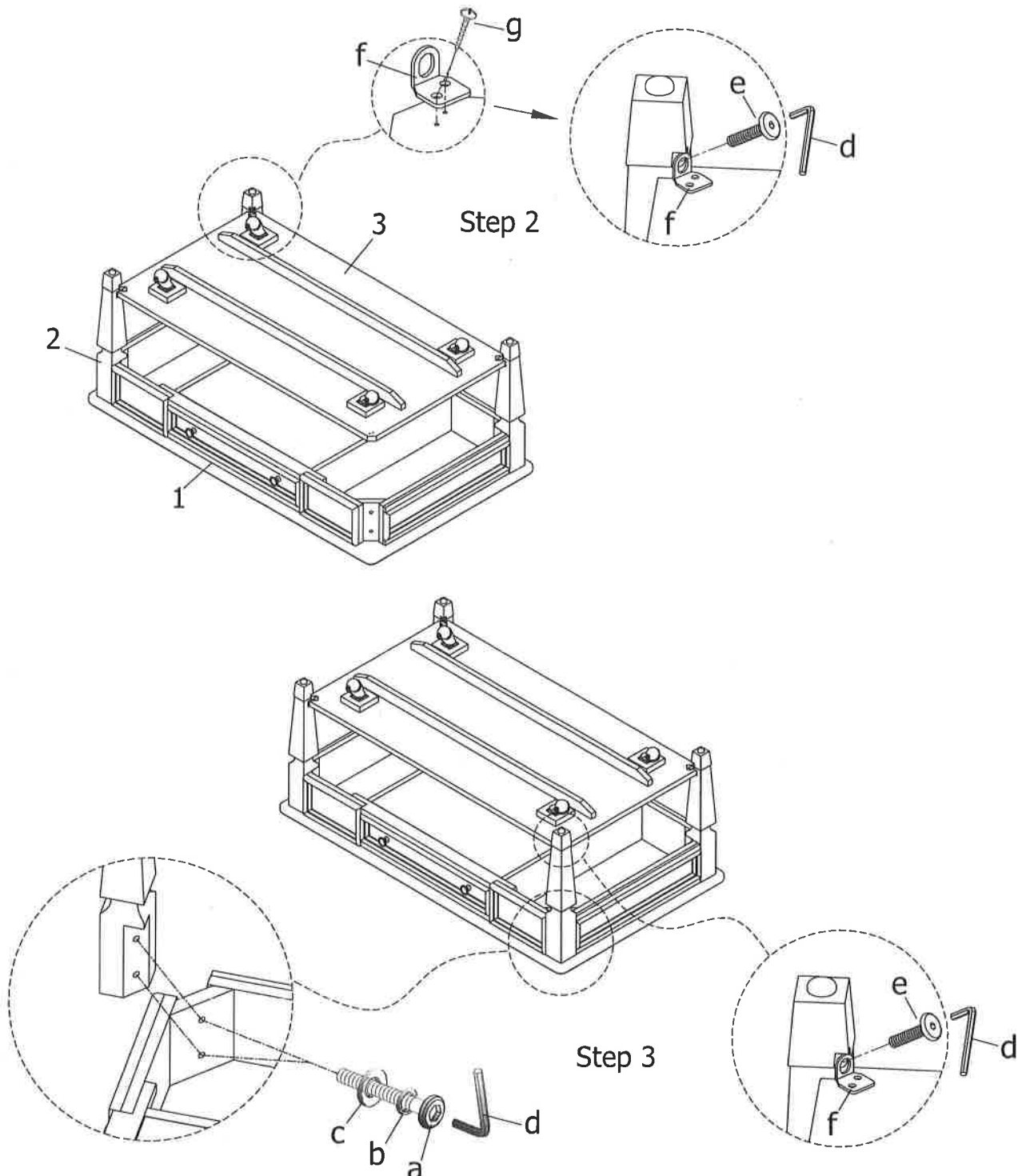
Clean the Table surface with a furniture polish and a soft cloth

MADE IN VIETNAM

ASSEMBLY INSTRUCTION

DESCRIPTION: Cocktail Table

Thank you for purchasing this quality product. Be sure to check all packing materials carefully for small parts which may have come loose inside the carton during shipment. Identify and count all parts and compare with the parts List Below.



CLEANING INSTRUCTION

Clean the Table surface with a furniture polish and a soft cloth